

AGROSAL d.o.o.



LOMBARDINI
A KOHLERCOMPANY

10LD



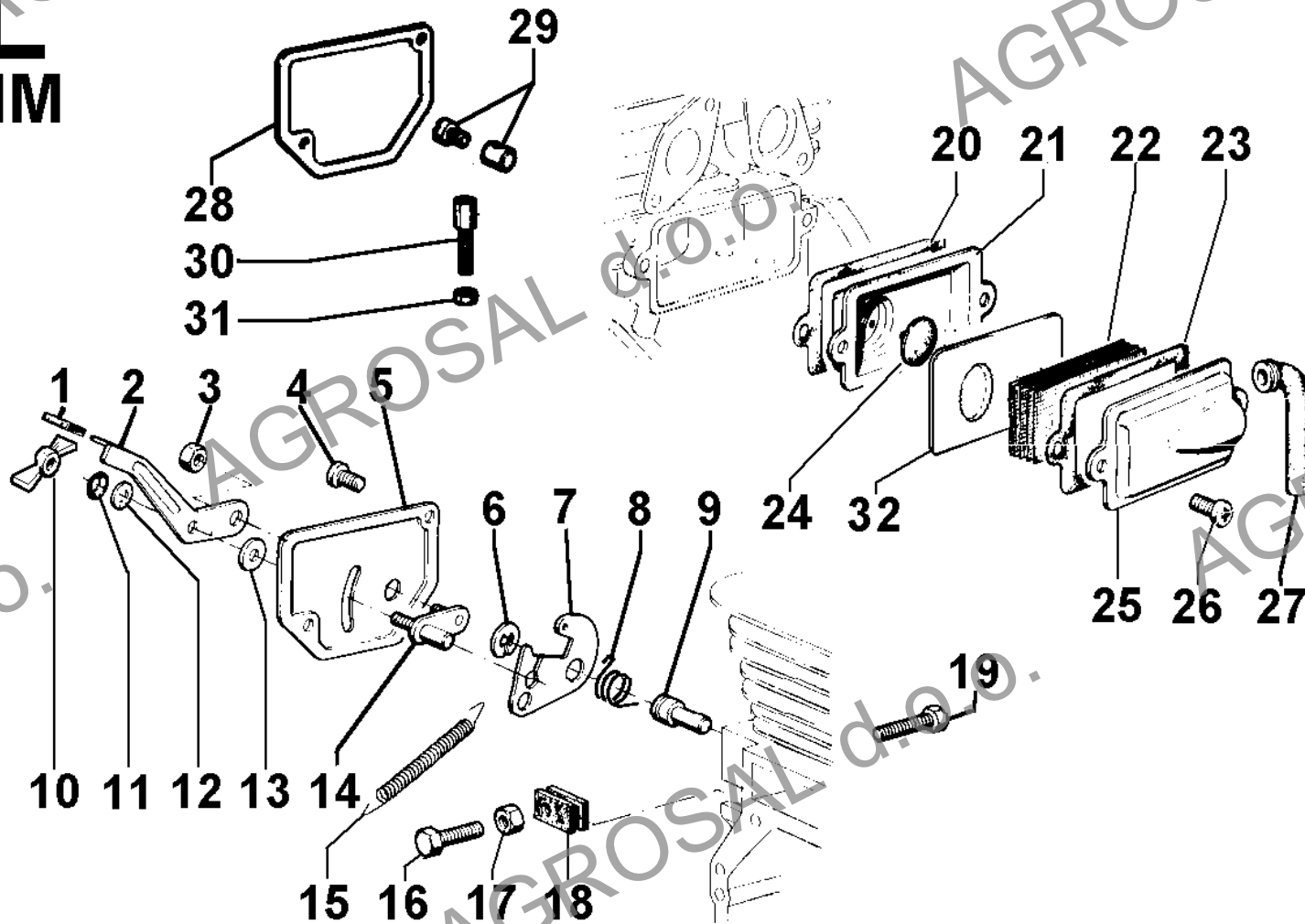
AGROSAL d.o.o.

Gregorčičeva ulica 38, 5270 Ajdovščina
telefon: 05 368 90 96, fax: 05 368 90 97
e-mail: info@agrosal.si, www.agrosal.si

**CONTROLS**

POS.	CODE	DESCRIPTION	Qty
1	<----->	see Pos.L 5	0
2	5200.606	lever	1
3	3203.038	nut M 5x0,8	1
4	9790.028	screw M 5 x 10	2
5	2750.282	hand control cover	1
6	1165.006	circlip diam. 7	1
7	5200.202	lever	1
8	5680.119	spring	1
9	6140.137	pin	1
10	3200.015	wing nut	1
11	<----->	see Pos.L 5	0
12	7626.054	washer diam. 5,3	1
13	<----->	see Pos.L 5	0
15	5655.047	governor spring std	1
15	5655.108	governor spring for generating sets 1500/3000 rpm	1
16	1760.034	bolt M 6 x 25	1
16	1760.086	bolt M 6x30	1
17	3240.008	nut M 6	1
18	1557.058	nut	1
19	1760.082	bolt M 6 x 35	1
20	4680.039	gasket	1
21	7951.109	BREATHER BOx	1
22	5976.005	filtering element	1
23	4680.039	gasket	1
24	9695.013	breather valve	1
25	2690.046	breather cap	1
25	2690.288	breather cap (denoised type)	1
26	9790.039	screw M 6 x 12	1
27	9580.023	breather line	1
28	2691.051	remote control cover	1
29	5830.119	nut	1
30	9180.191	adjuster M 6	1
31	3240.009	nut M 6	1

L
1IM



**LOMBARDINI**

A KOHLER COMPANY

Group: 10LD

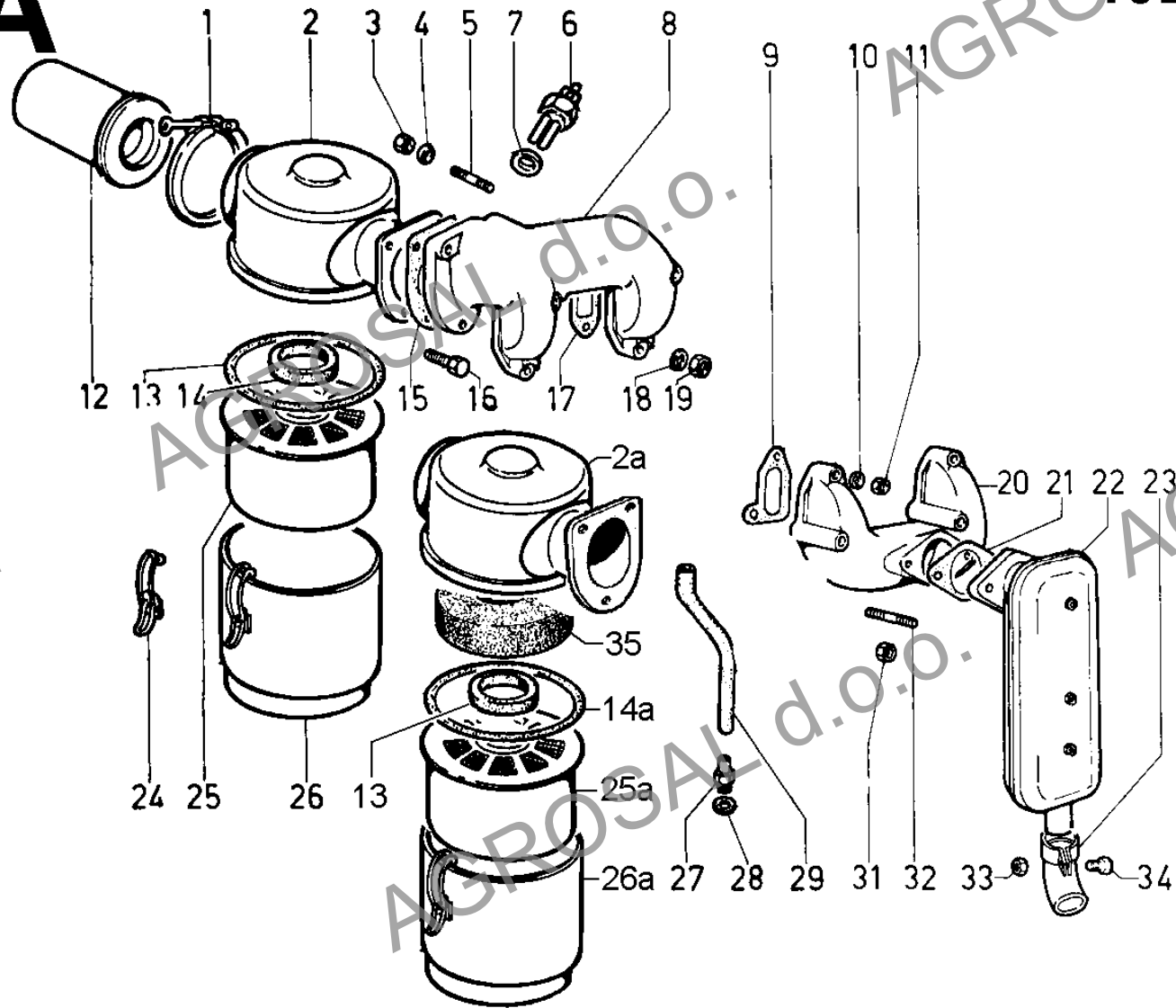
Engine: 10LD 400-2 Drawing: A

INTAKE AND EXHAUST

POS.	CODE	DESCRIPTION	Qty
1	3617.223	clamp	1
2	«-----»	AIR CLEANER - see Pos. A 2a	0
2a	3700.329	AIR CLEANER	1
3	3240.018	nut M 8	3
4	7565.007	washer diam. 8	3
5	6780.049	intake stud M 8 X 20 (36)	1
6	2100.055	preheating glow plug 12V (M 22 X 1,5)	1
7	4670.027	copper gasket	1
8	2486.312	inlet manifold	1
9	4420.019	eXhaust manif.gasket	2
11	3240.163	nut M 8	4
12	6727.022	cyclonic prefilter	1
13	4776.032	gasket h= 7 diam. 154	1
14	1261.073	seal ring diam. 62,5	1
14a	3525.080	spacer	1
15	4776.062	gasket	1
16	1770.039	bolt M 8 X 1,25 X 28	2
17	4420.020	inlet manifold gasket	2
18	7565.007	washer diam. 8	4
19	3240.018	nut M 8	4
20	2486.028	eXhaust manifold	1
21	4500.079	eXhaust gasket	1
22	5460.248	muffler	1
23	9170.050	muffler end (d.43,5/42)	1
24	4115.048	hook	2
25	5496.077	filtering element	1
25a	5496.075	filtering element for air cleaner Pos. A 2a	1
26	«-----»	see Pos. 2	0
27	7300.091	connection	1
28	4670.014	copper gasket diam.12	1
29	9400.058	suction line mm 250X8	1
31	3240.163	nut M 8	2
32	6780.005	stud M 8 X 18 (30)	2
33	3240.018	nut M 8	1
34	1770.005	bolt M 8 X 1,25 X 22	1
35	5496.193	filtering element	1

A

10LD



**LOMBARDINI**

A KOHLER COMPANY

Group: 10LD

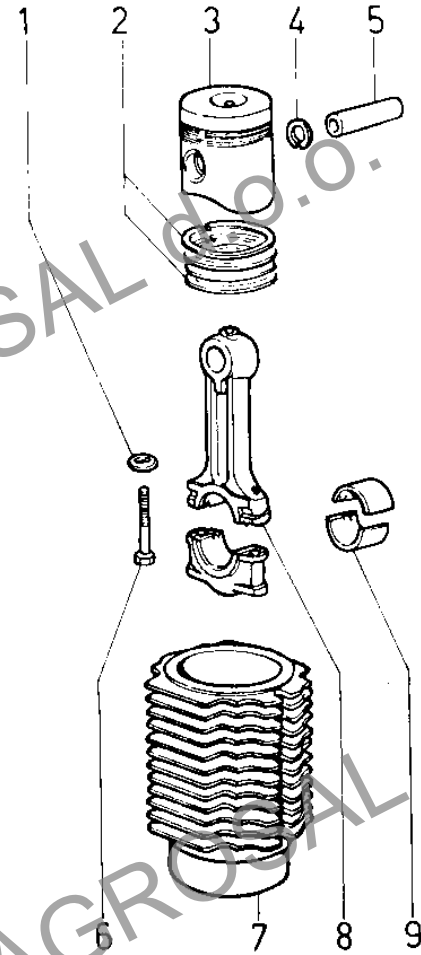
Engine: 10LD 400-2 Drawing: B

CONNECTING ROD/PISTON SET/CYLINDER

POS.	CODE	DESCRIPTION	Qty
1	7626.048	connect.rod washer	4
2	8211.071	ring set std. (3 grooves)	2
2	8211.072	ring set +0,50 (3 grooves)	2
2	8211.073	ring set +1,00 (3 grooves)	2
3	6500.143	PISTON SET std.	2
3	6500.144	PISTON SET +0,50	2
3	6500.145	PISTON SET +1,00	2
4	1240.017	snap ring	4
5	8480.091	gudgeon pin	2
6	1770.083	bolt M 8 X 1,25 X 50	4
7	«-----»	cylinder - no longer avail.	0
8	1526.030	CONNECTING ROD	2
9	1640.082	big end bushing std.	2
9	1640.083	big end bushing -0,25	2
9	1640.084	big end bushing -0,50	2

B

10LD



**LOMBARDINI**

A KOHLER COMPANY

Group: 10LD

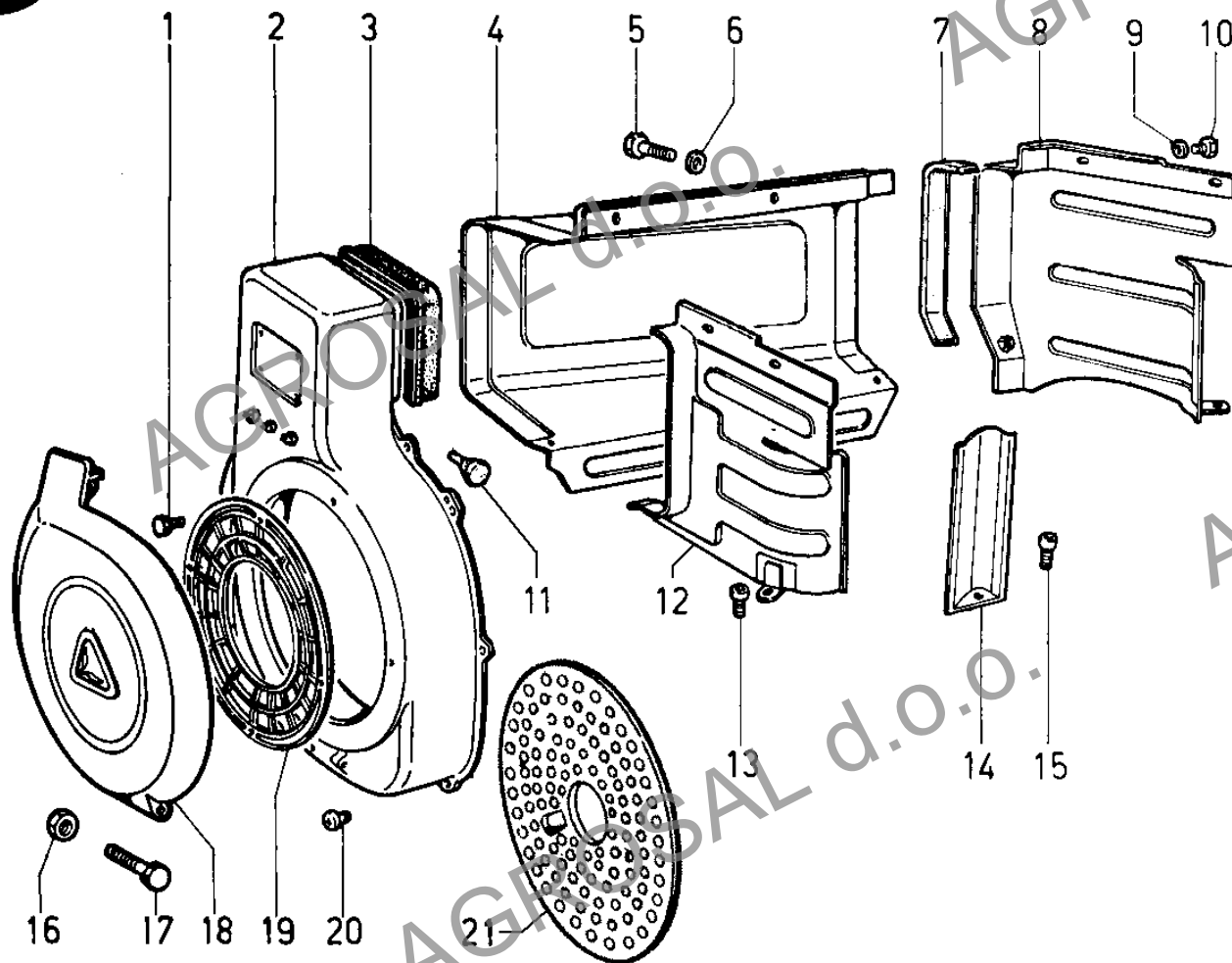
Engine: 10LD 400-2 Drawing: G

COOLING SYSTEM

POS.	CODE	DESCRIPTION	Qty
1	9790.039	screw M 6 X 12	4
2	«-----»	shroud	0
5	1770.002	bolt M 8 X 1,25 X 16	1
6	7565.007	washer diam. 8	1
7	4776.090	gasket	1
8	«-----»	denoised airtight	0
9	7555.004	washer diam. 6	2
10	1760.003	bolt M 6 X 1 X 12	2
11	3527.018	spacer	1
12	5066.079	denoised airtight	1
13	9790.039	screw M 6 X 12	7
14	«-----»	deflector	0
15	9731.092	screw M 8 X 14	1
16	3203.050	selflocking nut M 6	1
17	1760.094	bolt M 6 X 1 X 100	1
18	«-----»	pulley cover - no longer avail.	0
19	6927.056	guard	1
20	9790.039	screw M 6 X 12	7
21	5096.038	flywheel guard	1

G

10LD



**LOMBARDINI**

A KOHLER COMPANY

Group: 10LD

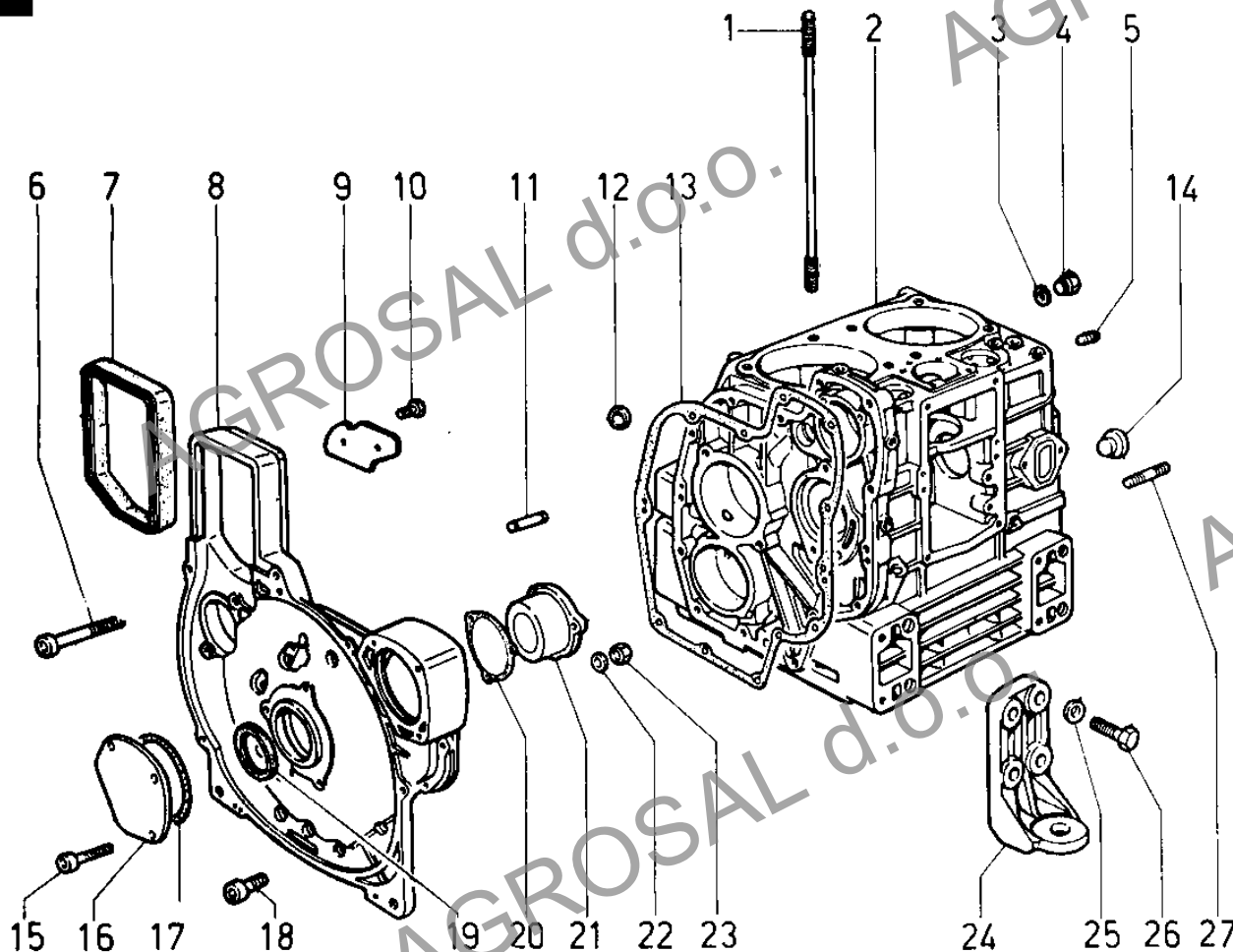
Engine: 10LD 400-2 Drawing: E

CRANKCASE/GEAR COVER/MOUNTS

POS.	CODE	DESCRIPTION	Qty
1	6850.102	stud	8
2	1510.708	CRANKCASE	1
3	4670.058	copper gasket diam. 8,2X12X1,5	1
4	1770.042	bolt M 8 X 1,25 X 10	1
5	9765.111	threaded plug	1
6	9732.077	screw M 8 X 70	3
7	4776.089	gasket	1
8	«-----»	support	0
9	5055.026	panel	1
10	1760.001	bolt M 6 X 1 X 10	2
11	8460.055	locating dowel	2
12	9080.083	plug	1
13	4701.041	gasket	1
14	9000.072	eXpansion plug	1
15	9730.032	screw M 8 X 45	3
16	2751.095	blanking plate	1
17	1201.027	rubber oil seal	1
18	9732.063	screw M 8 X 35	10
19	1213.321	oil seal (front) 42X38X10	1
20	4776.087	auXiliary hous.gasket	1
21	2751.096	cover	1
22	7625.010	washer diam. 8	3
23	3240.018	nut M 8	3
24	6429.033	engine mount	4
25	7565.011	washer diam.10	16
26	1780.007	bolt M 10 X 1,5 X 35	16
27	«-----»	stud	0

E

10LD



**LOMBARDINI**

A KOHLER COMPANY

Group: 10LD

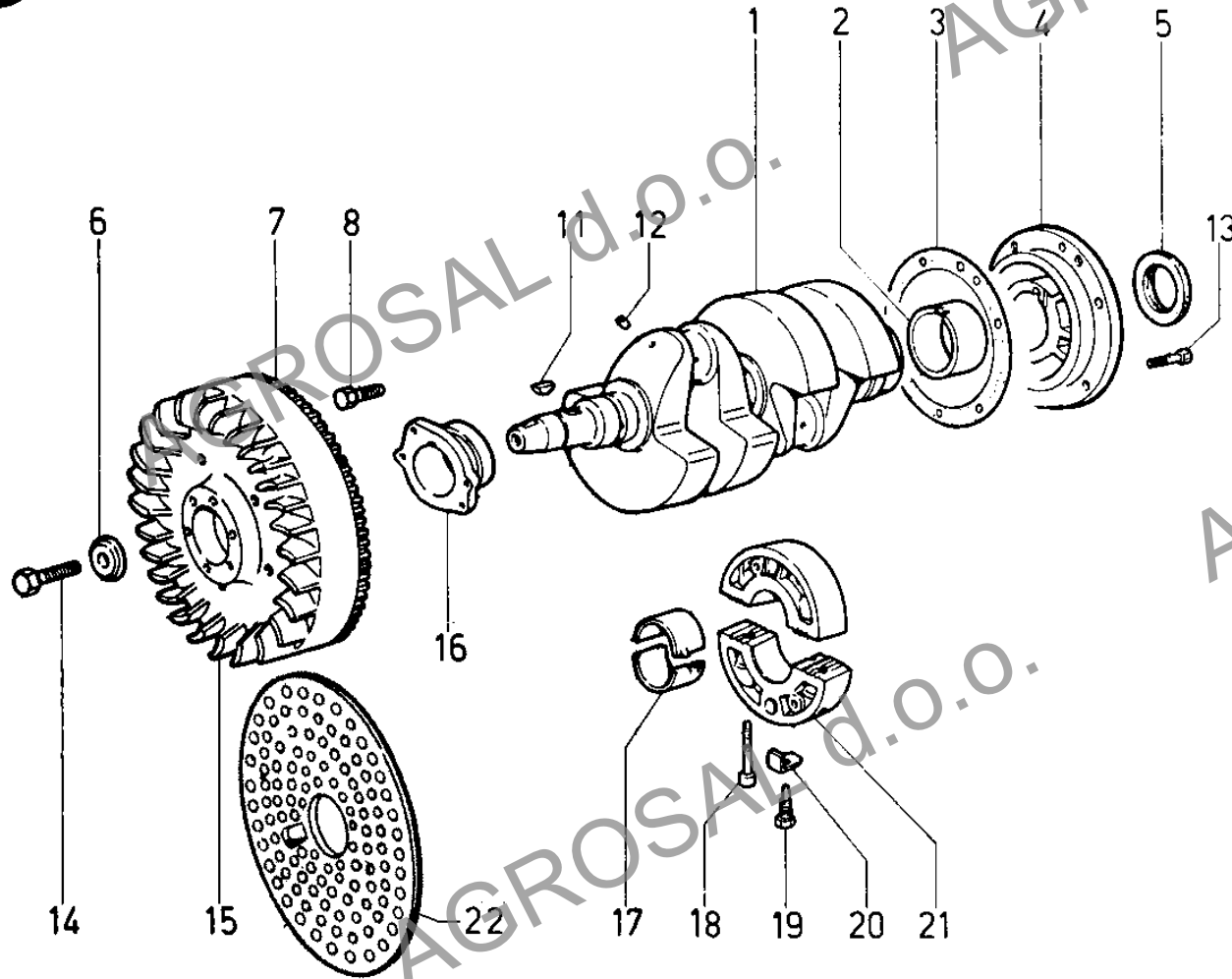
Engine: 10LD 400-2 Drawing: C

CRANKSHAFT AND SUPPORTS/FLYWHEEL

POS.	CODE	DESCRIPTION	Qty
1	«-----»	CRANKSHAFT	0
2	1611.053	bearing -0,50 (tank side)	1
2	1611.054	bearing -0,25 (tank side)	1
2	1611.055	bearing std. (tank side)	1
3	4701.058	gasket 0,30	1
3	4701.059	gasket 0,50	1
4	8675.291	SUPPORT	1
5	1213.347	seal ring 70X88X8	1
6	7626.033	washer	1
7	«-----»	crown gear	0
8	1770.156	bolt M 8 X 1,25 X 25	2
9	«-----»	washer	0
11	2280.056	crankshaft wooddruff key	2
12	9000.073	eXpansion plug	4
13	1770.156	bolt M 8 X 1,25 X 25	6
14	1805.025	bolt	1
15	«-----»	flywheel	0
16	8675.266	gear side support std.	1
16	8675.267	gear side support -0,25	1
16	8675.268	gear side support -0,50	1
17	1610.082	main bearing shell c. std.	1
17	1610.098	main bearing shell c. -0,25	1
17	1610.099	main bearing shell c. -0,50	1
18	9732.075	screw M 8 X 50	2
19	1862.144	bolt	1
20	5111.069	safety plate	1
21	8676.055	MIDDLE SUPPORT	1
22	«-----»	see Pos. G 21	0

C

10LD



**LOMBARDINI**

A KOHLER COMPANY

Group: 10LD

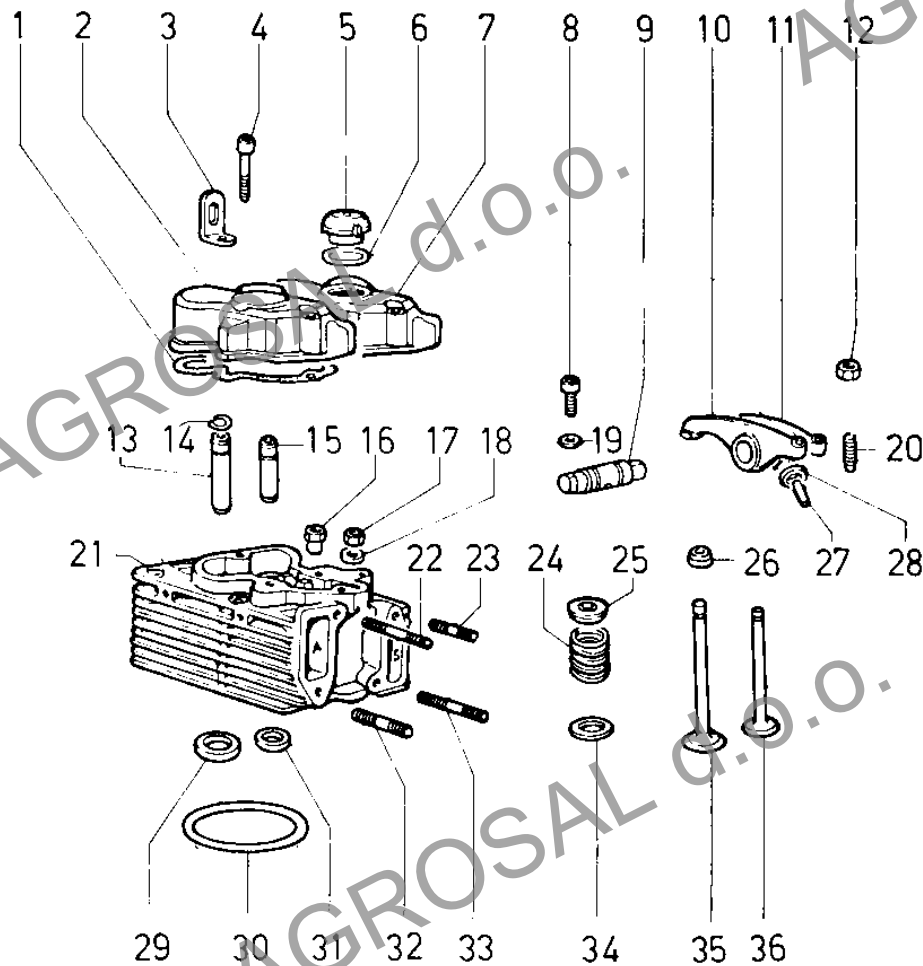
Engine: 10LD 400-2 Drawing: L

CYLINDER HEAD/ROCKER ARM BOX/VALVES

POS.	CODE	DESCRIPTION	Qty
1	4400.061	rocker cov gasket 0,80	2
2	2125.339	rocker arm cover	1
3	8506.003	engine lifting eye	2
4	9732.075	screw M 8 X 50	4
5	9032.064	FILLER OIL CAP	1
6	1200.015	O ring 137 for filler oil cap	1
7	2125.093	rocker arm cover with hole for oil filler	1
8	9730.100	screw M 8 X 25	4
9	6045.040	rocker arm shaft	2
10	4330.036	ROCK.ARM ASS.Y std	2
11	<----->	see Pos. 10	0
12	3240.010	nut M 7	4
13	<----->	inlet v.guide +0,50	0
13	4845.182	inlet v.guide std.	2
14	1160.021	circlip	4
15	<----->	eXhaust v.guide +0,50	0
15	4845.178	eXhaust v.guide std.	2
16	3300.227	elongated nut	2
17	3240.124	nut	8
18	<----->	washer diam.10,5	0
19	7565.007	washer diam. 8	4
20	9850.002	rocker arm adjuster	4
21	<----->	CYLINDER HEAD ASS.Y	0
22	6780.084	stud M 8 X 40 (52)	2
24	5755.004	valve spring	4
25	6410.018	retainer with half-collets	4
26	2135.072	cap	2
27	9455.053	rocker shaft lub.pipe	2
28	1350.011	ring	2
29	<----->	inlet v.seat	0
30	4730.089	head gasket 0,60	2
30	4730.092	head gasket 0,90	2
30	4730.186	head gasket 0,55	2
30	4730.187	head gasket 0,65	2
30	4730.188	head gasket 0,75	2
30	4730.189	head gasket 0,85	2
30	4730.190	head gasket 0,95	2
31	8000.037	eXhaust v.seat	2
32	6780.030	stud M 8 X 70 (82)	2
33	6780.086	stud M 8 X 65 (77)	2
34	3430.067	spring seat (bottom)	4
35	9652.036	intake valve	2
36	9685.046	eXhaust valve	2
37	1213.338	seal ring for valve	2

L

10LD



**LOMBARDINI**

A KOHLER COMPANY

Group: 10LD

Engine: 10LD 400-2 Drawing: F

FUEL SYSTEM

POS.	CODE	DESCRIPTION	Qty
1	3790.074	injector top plate	2
2	4670.058	copper gasket diam. 8,2X12X1,5	2
3	1901.029	union bolt M 8	2
4	9371.101	bleeding pipe mm 745	1
5	3617.199	fix.tank clamp	2
6	9043.092	fuel tank cap	1
7	8103.046	FUEL TANK 7 lt (370X170X140)	1
8	3203.050	selflocking nut M 6	4
9	6760.045	stud M 6 X 65 (80)	4
10	3616.018	injector feed pipe saddle	2
11	9600.057	rubber spacer	4
12	4670.058	copper gasket diam. 8,2X12X1,5	2
13	1755.002	bolt M 5 X 0,8 X 12	2
14	5400.046	rubber sheathing	2
15	6615.045	NOZZLE-HOLDER Bosch	2
16	<----->	gasket	2
17	7301.006	connection	2
18	9376.060	high press.pipe	1
19	<----->	support	0
20	3240.018	nut M 8	2
21	7265.008	connection	2
22	9376.061	high press.pipe	1
23	3521.036	spacer	2
24	6780.010	stud M 8 X 22 (34)	2
25	3630.050	clamp dia 9-11	1
26	6531.104	nozzle	2
27	<----->	copper gasket 1,00	0
27	4670.065	copper gasket 1,50	2
28	7470.003	filler	2
29	1200.031	rubber oil seal	2
30	8335.029	washer seal	2
31	9730.100	screw M 8 X 25	3
32	4670.060	copper gasket diam.12	1
33	4775.196	gasket	1
34	1901.171	deaeration plug	1
35	8315.016	gasket	1
36	1557.019	drilled block	2
37	9730.139	screw M 6 X 60	2
38	7625.012	washer diam. 8,4	2
39	7565.007	washer diam. 8	2
40	9672.012	delivery valve BOSCH	2
41	5755.034	valve spring	2
42	7625.010	washer diam. 8	4
43	6590.130	injection pump	1
44	8400.048	taper pin	1
45	1901.031	union bolt M 12	1
46	1557.020	threaded block	2
47	5575.006	spring	1
48	3930.019	cup	1
49	1200.268	rubber oil seal	1
50	4490.017	gasket	1
51	4850.009	guide	1
52	4760.015	valve gasket	2

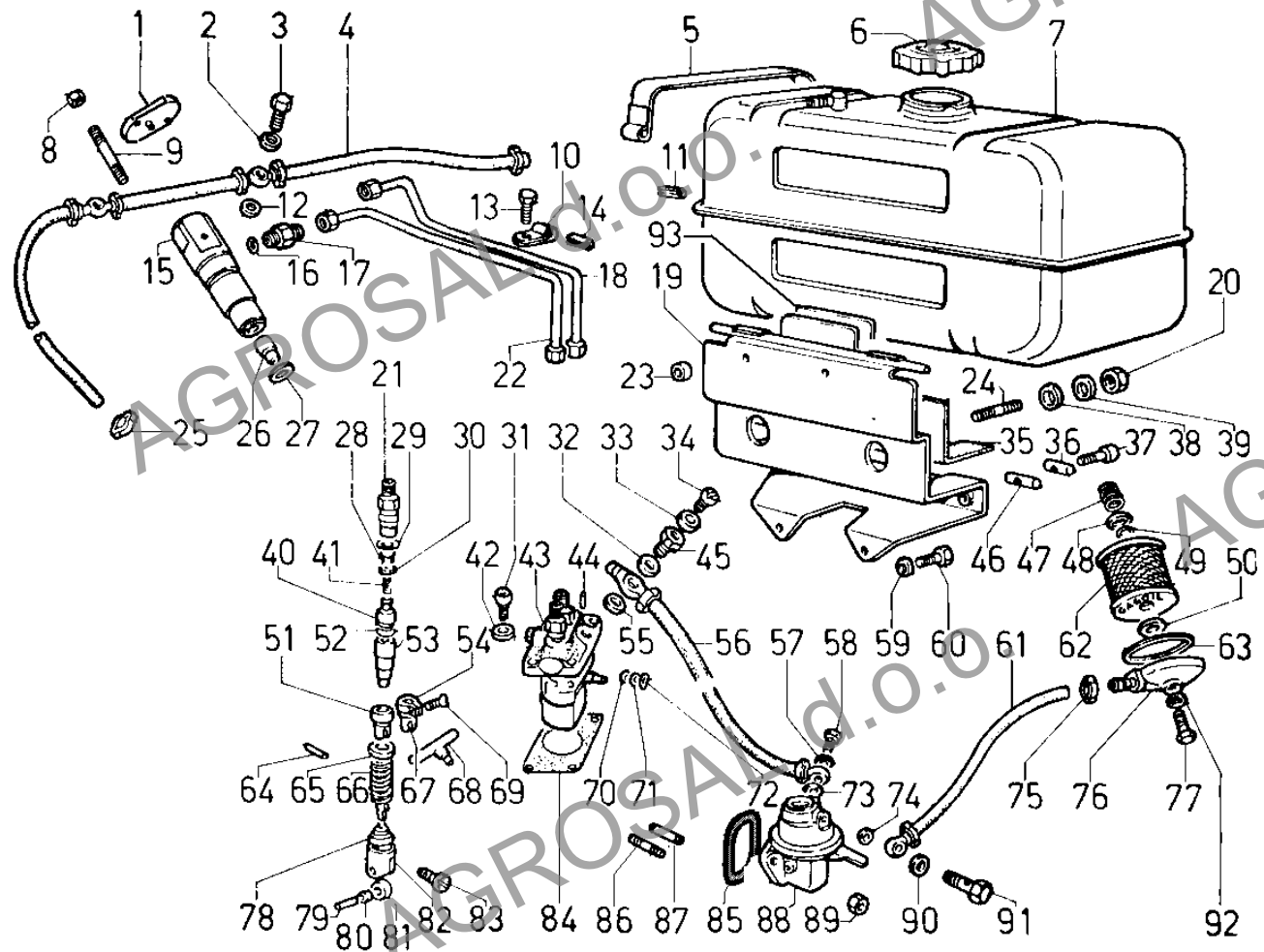
Group: 10LD
Engine: 10LD 400-2 Drawing: F

FUEL SYSTEM

POS.	CODE	DESCRIPTION	Qty
53	6578.119	injection plunger	2
54	«-----»	sector	0
55	4670.060	copper gasket diam.12	1
56	9375.351	fuel hose (mm 190)	1
57	4670.059	copper gasket diam.10	1
58	1901.030	union bolt M 10	1
59	7565.007	washer diam. 8	2
60	1770.056	bolt M 8 X 1,25 X 18	2
61	9375.276	fuel hose mm 430	1
62	2175.009	fuel filter cartridge	1
62	3730.015	FUEL FILTER	1
63	4430.071	gasket	1
65	7980.020	cup	2
66	5625.002	spring	2
67	«-----»	see Pos. F 43	0
70	1580.023	bushing	1
71	771R.001	washer diam. 5,3	1
72	2800.003	cotter pin	1
73	4670.059	copper gasket diam.10	1
75	3630.008	clamp	1
76	2605.033	filter cover	1
77	1760.162	bolt	1
78	«-----»	spring retainer bottom - see Pos. F 43	0
79	6230.068	pin	2
80	«-----»	see Pos. F 82	0
82	7215.017	tappet	2
83	6230.069	pin	1
84	4580.002	gasket 0,10	1
84	4580.009	gasket 0,50	1
84	4580.068	gasket 0,05	1
85	1200.087	O ring 3150	1
86	6780.008	stud M 8 X 20 (32)	2
87	7200.078	drive rod	1
88	6585.079	feed pump	1
89	3203.093	nut M 8	2
90	4670.059	copper gasket diam.10	1
91	1901.030	union bolt M 10	1
92	1202.052	rubber oil seal	1
93	4701.066	gasket	1

F

10LD



**LOMBARDINI**

A KOHLER COMPANY

Group: 10LD

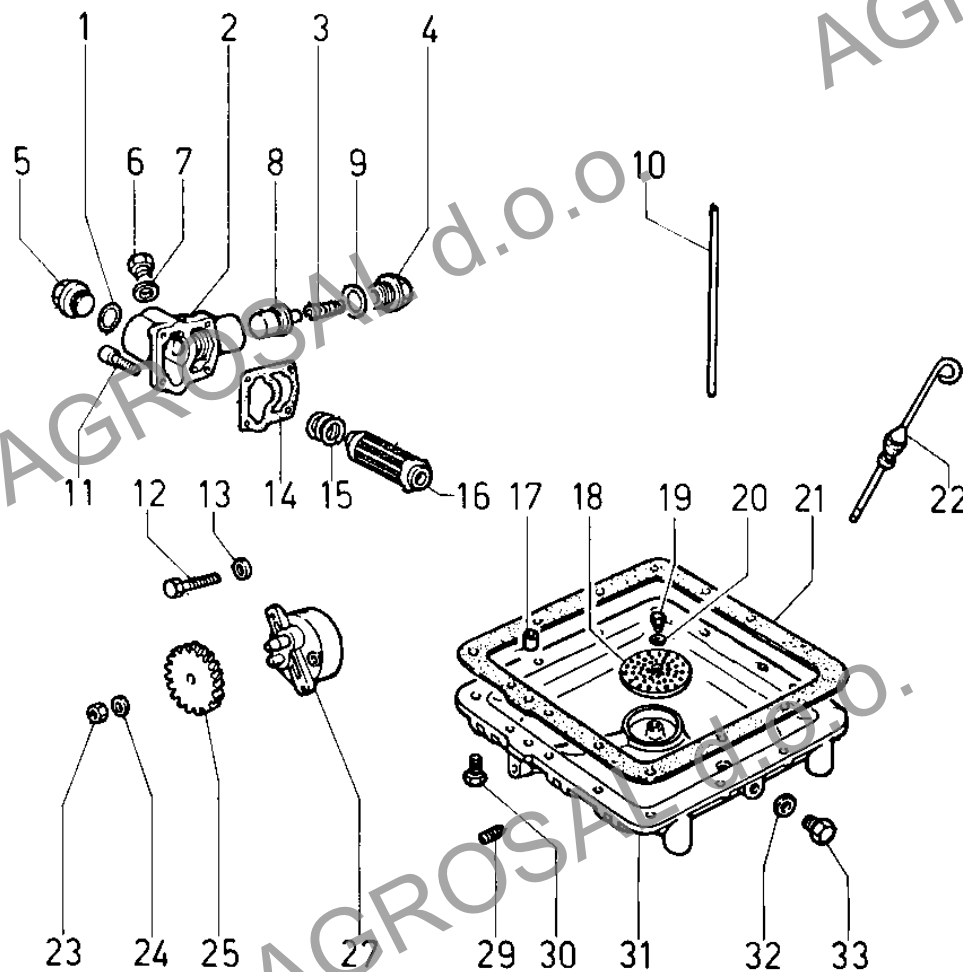
Engine: 10LD 400-2 Drawing: H

LUBRICATING SYSTEM

POS.	CODE	DESCRIPTION	Qty
1	1200.016	O ring 137	1
2	2605.019	oil filter cover	1
3	5755.049	spring	1
4	9070.012	pressure valve plug	1
5	9060.008	oil cartridge cap with M 14 hole	1
6	1770.042	bolt M 8 X 1,25 X 10	1
7	4670.058	copper gasket diam. 8,2X12X1,5	1
8	9680.013	pressure oil valve	1
9	4670.088	copper gasket 18X24X1	1
10	9455.054	lubricating pipe	2
11	9730.012	screw M 6 X 20	4
12	1770.009	bolt M 8 X 1,25 X 35	2
13	7565.007	washer diam. 8	2
14	<----->	oil filter gasket	0
15	5725.032	spring	1
16	2175.044	oil filter cartridge	1
17	8430.065	locking needle	1
18	5090.010	oil strainer	1
19	1760.001	bolt M 6 X 1 X 10	1
20	7565.004	washer diam. 6	1
21	4601.042	gasket	1
22	1400.515	dipstick std (mm 110)	1
23	3240.036	nut M 10	1
24	7565.011	washer diam.10	1
25	4936.009	oil pump drive gear	1
27	6605.037	lub.oil pump ass.y	1
28	<----->	washer	0
29	9765.108	screw M 10	1
30	1770.155	bolt M 8 X 1,25 X 30	14
31	6645.468	oil pan	1
32	4670.016	copper gasket diam.14	1
33	8965.005	oil drain plug M 14	1

H

10LD





LOMBARDINI

A KOHLER COMPANY

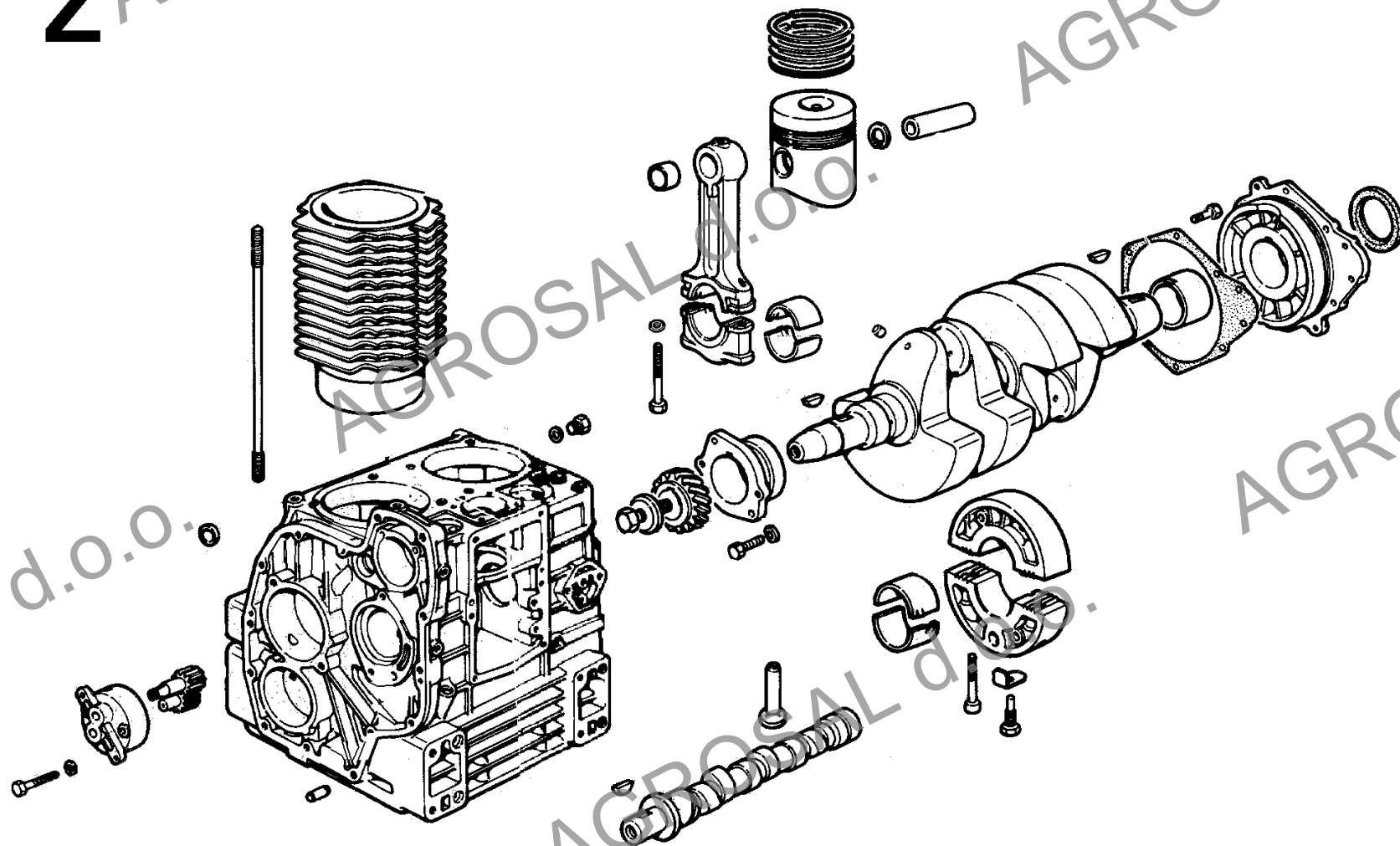
Group: 10LD

Engine: 10LD 400-2 Drawing: Z

SHORT BLOCK

POS.	CODE	DESCRIPTION	Qty
1	«-----»	short block	0

10LD



**LOMBARDINI**

A KOHLER COMPANY

Group: 10LD

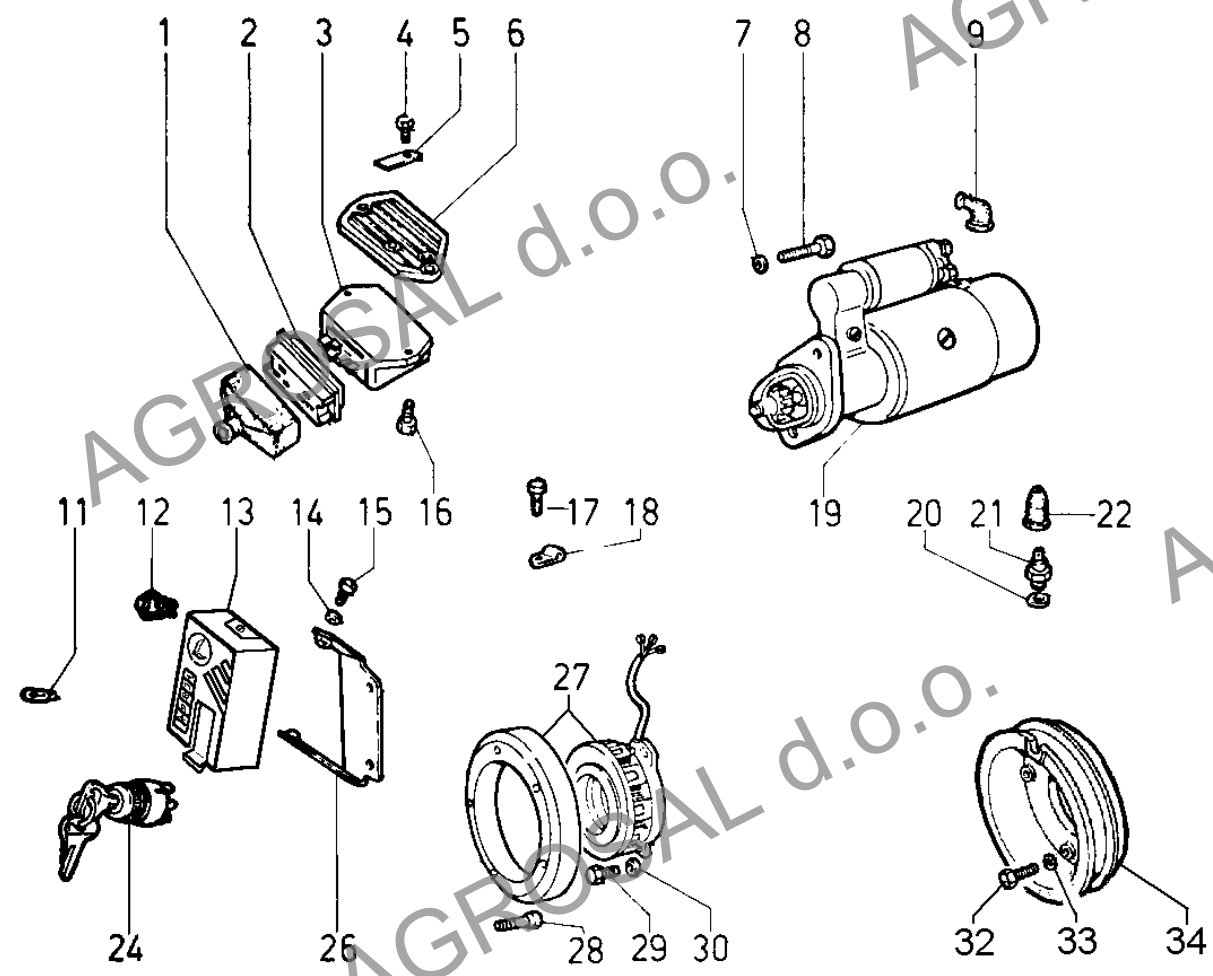
Engine: 10LD 400-2 Drawing: M

STARTING

POS.	CODE	DESCRIPTION	Qty
1	2145.014	regulator cap	1
2	6740.153	inlet regul.Saprisa	1
2	6740.154	inlet regul.Ducati	1
3	7362.228	voltage regulator. 12V 14/26A-6 contacts for alternator 3 wires	1
4	1760.003	bolt M 6 X 1 X 12	1
5	5168.023	tabwasher	1
6	8300.048	bracket	1
7	7565.011	washer diam.10	2
8	9730.045	screw M 10 X 30	2
9	6491.005	pipe elbow	1
10	<----->	lampe-socket - no longer avail.	0
11	5175.162	lamp 12V	2
12	7195.056	push button	1
13	2900.110	dashboard 2 lights	1
14	7625.092	washer diam. 6,5	2
15	1760.005	bolt M 6 X 1 X 16	2
16	9732.092	screw M 8 X 18	4
17	1770.001	bolt M 8 X 1,25 X 12	1
18	3617.045	clamp	1
19	5840.223	starting motor 12 V 1,8 KW	1
20	4670.014	copper gasket diam.12	1
21	6745.050	oil switch 0,3 bar (M 12)	1
22	6491.013	pipe elbow	1
23	<----->	lampe-socket	0
24	5041.020	key switch	1
25	<----->	switch cover	0
26	8506.026	bracket	1
27	1157.153	volt.alternator 12V 12A - 3 wires	1
28	9730.015	screw M 6 X 30	5
29	1760.003	bolt M 6 X 1 X 12	4
30	7565.004	washer diam. 6	4
32	1770.009	bolt M 8 X 1,25 X 35	4
33	7565.007	washer diam. 8	4
34	6961.061	start pulley	1

M

10LD



**LOMBARDINI**

A KOHLER COMPANY

Group: 10LD

Engine: 10LD 400-2 Drawing: D

TIMING/SPEED GOVERNOR

POS.	CODE	DESCRIPTION	Qty
1	1410.044	push rod	4
2	«-----»	guard tube	0
3	4740.024	lip seal	2
4	1770.150	bolt M 8 X 1,25 X 22	2
6	1240.005	snap ring	1
7	2280.047	key 4 X 5,5 X 16	1
8	7215.043	tappet	4
9	4740.024	lip seal	2
10	1780.059	bolt M 10 X 1,5 X 35	1
11	7626.038	washer	1
12	7362.277	SPEED GOVERNOR	1
12	7362.278	SPEED GOVERNOR 3600 R.P.M.	1
13	1160.022	circlip	1
14	«-----»	ball bearing	0
15	7625.007	washer diam. 6	1
16	4882.046	GOVERNOR LEVER ASS.Y	1
17	7626.040	washer	1
18	6080.022	governor push rod	1
19	1011.085	camshaft	1
20	4936.035	gear	1
21	2086.140	governor bell	1
22	9730.107	screw M 6 X 14	1
23	5200.854	GOVERNOR LEVER	1
24	1240.077	snap ring	1
25	7626.040	washer	1
26	1585.025	bushing	2

D

10LD

