

AGROSAL d.o.o.



LOMBARDINI
A KOHLERCOMPANY

11LD



AGROSAL d.o.o.

Gregorčičeva ulica 38, 5270 Ajdovščina
telefon: 05 368 90 96, fax: 05 368 90 97
e-mail: info@agrosal.si, www.agrosal.si

**LOMBARDINI**

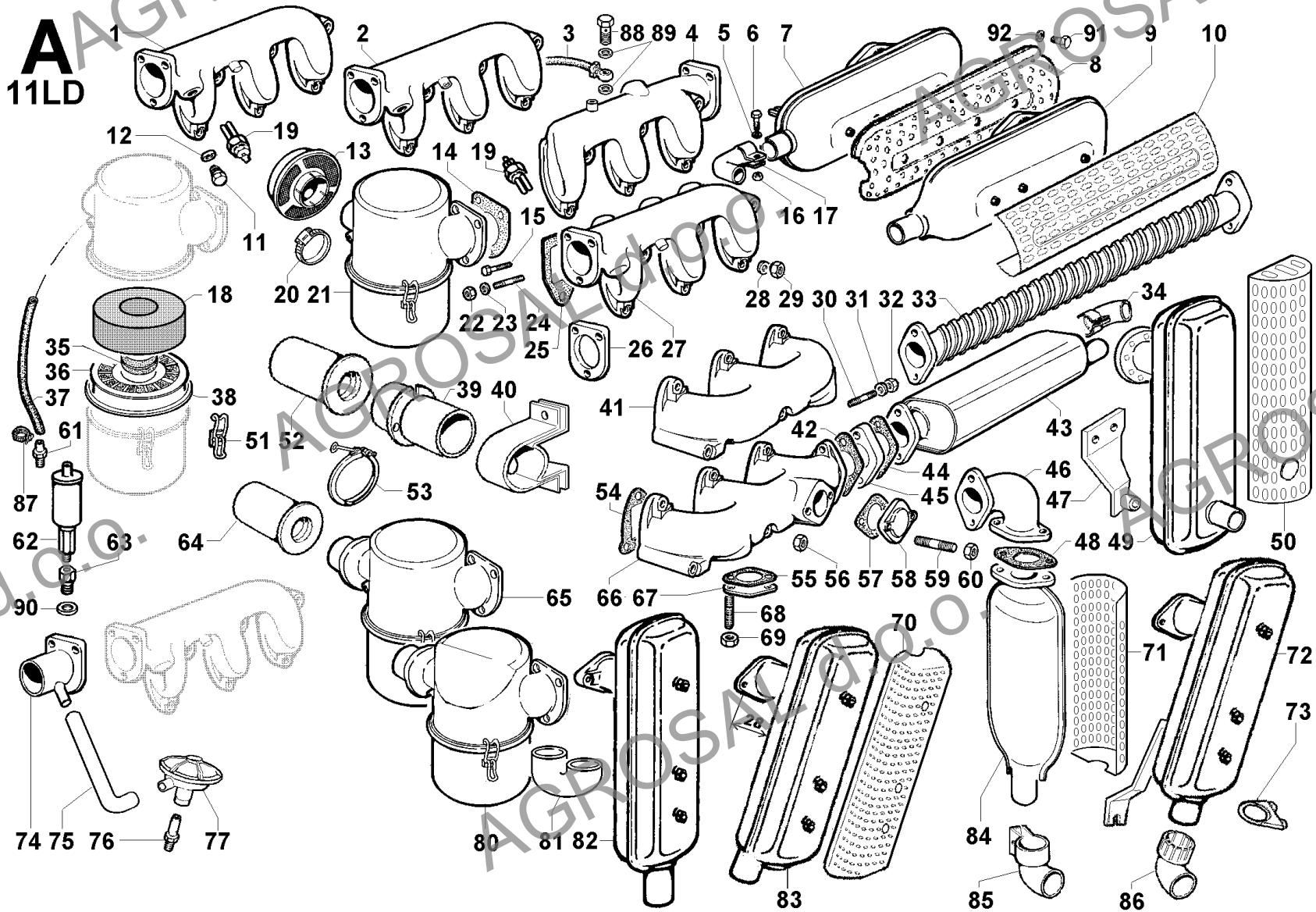
A KOHLER COMPANY

Group: 11LD

Engine: 11LD 535-3 Drawing: A

INTAKE AND EXHAUST

POS.	CODE	DESCRIPTION	Qty
5	7565.007	washer diam. 8	1
6	1770.004	bolt M 8 X 1,25 X 20	1
7	5460.217	eXhaust muffler	1
8	6927.128	muffler guard	1
13	2135.093	cap	1
14	4490.086	gasket	1
15	1770.006	bolt M 8 X 1,25 X 25	2
16	3240.018	nut M 8	1
17	9170.018	muffler end (d.36,5/38)	1
18	5496.182	polyureth.filtering element	1
21	3700.337	air cleaner with cap	1
22	3240.018	nut M 8	3
23	7565.007	washer diam. 8	3
24	6780.008	stud M 8 X 20 (32)	1
25	4420.020	inlet manifold gasket	3
26	3781.069	flange h= 8 mm d=50 mm	1
27	2486.043	inlet manifold	1
28	7565.007	washer diam. 8	6
29	3240.018	nut M 8	6
30	6780.008	stud M 8 X 20 (32)	2
31	7625.061	washer diam. 8,4	2
32	3240.163	nut M 8	2
34	9170.018	muffler end (d.36,5/38)	1
35	1261.056	seal ring	1
36	5496.183	filtering element	1
37	9400.094	tube mm 365	1
38	4176.029	gasket	1
42	4500.079	eXhaust gasket	1
51	4115.048	hook	2
54	4420.019	eXhaust manif.gasket	3
55	4500.079	eXhaust gasket	1
56	3240.163	nut M 8	6
57	4500.079	eXhaust gasket	1
58	6300.018	plate	1
59	6780.008	stud M 8 X 20 (32)	2
60	3240.163	nut M 8	2
61	7301.036	connection M 16 X 1,5	1
66	2486.046	eXhaust manifold	1
67	6300.018	plate	1
68	6780.008	stud M 8 X 20 (32)	2
69	3240.163	nut M 8	2
70	6927.172	muffler guard	1
83	5460.291	muffler with horiz.inlet flange	1
85	9170.052	muffler end (diam. 39,5/42)	1
91	1770.042	bolt M 8 X 1,25 X 10	3
92	7565.007	washer diam. 8	3



**LOMBARDINI**

A KOHLER COMPANY

Group: 11LD

Engine: 11LD 535-3 Drawing: B

CONN.ROD/PISTON/CYLINDER/CRANKSHAFT/FLYWHEEL/CRANKCASE/FLANGING/MOUNTS

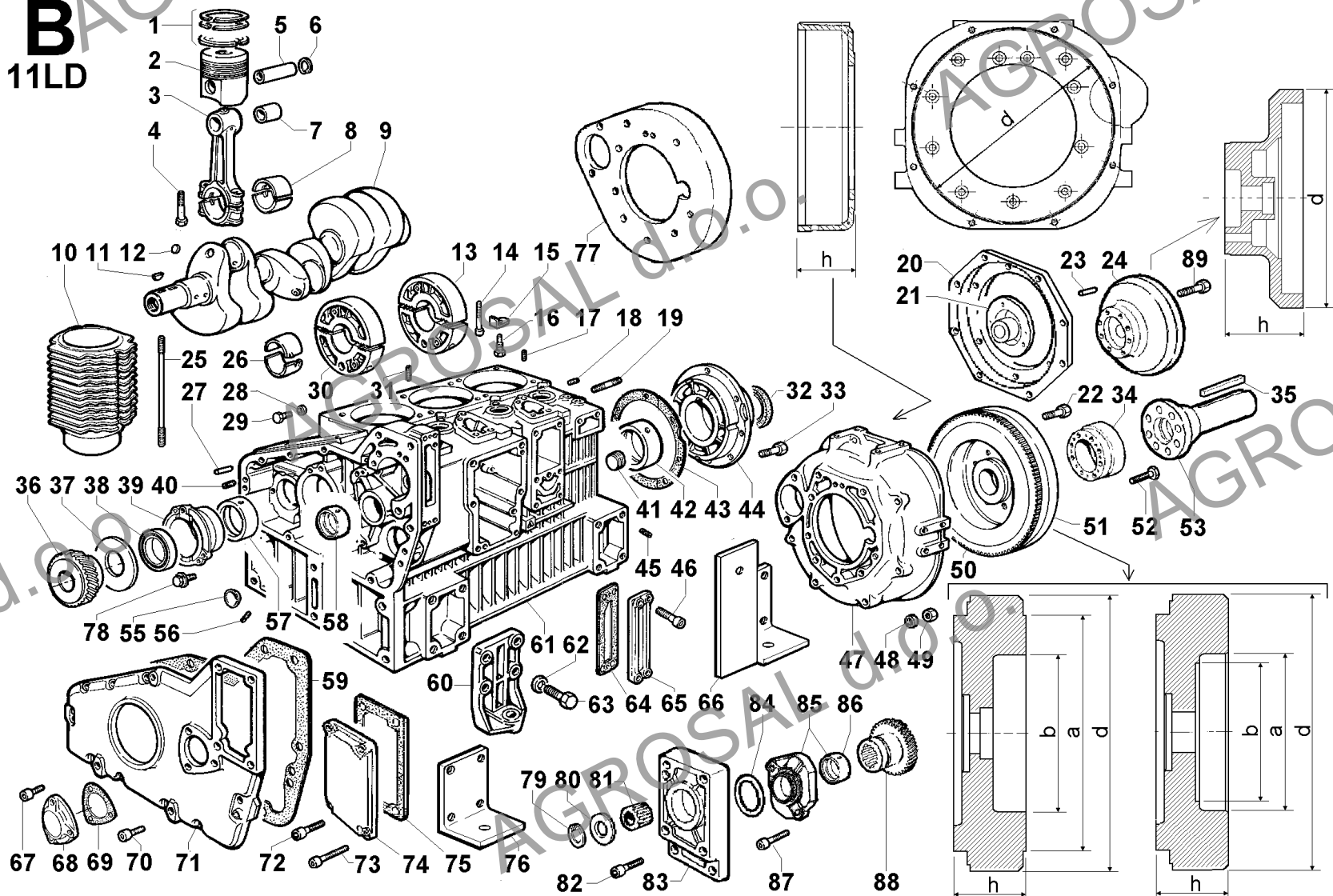
POS.	CODE	DESCRIPTION	Qty
1	8211.058	ring set std.	3
1	8211.059	ring set +0,50	3
1	8211.060	ring set +1,00	3
2	6500.269	PISTON SET std	3
2	6500.270	PISTON SET +0,50	3
2	6500.271	PISTON SET +1,00	3
3	1526.111	CONNECTING ROD	3
4	1770.109	conn.rod bolt M 8 X 50	6
5	8480.029	gudgeon pin	3
6	1240.022	snap ring	6
7	1630.014	small end bearing	3
8	1640.059	big end bushing std.	3
8	1640.060	big end bushing -0,25	3
8	1640.061	big end bushing -0,50	3
9	1050.946	CRANKSHAFT	1
10	2380.103	cylinder	3
11	2280.056	crankshaft woodruff key	2
12	9080.133	cap diam. 8	3
13	8676.080	FLYWHELL SIDE MID.SUPPORT	1
14	9730.034	screw M 8 X 55	4
15	5111.069	safety plate	2
16	1862.144	bolt	2
17	9080.182	plug diam.10	2
18	9765.109	screw M 14	1
19	6800.004	stud M 10 X 20 (35)	11
20	1198.185	flanging ring (drilling holes)	1
20	1198.190	flanging ring (through holes)	1
21	3855.038	ball bearing flange diam. 118	1
22	1862.073	bolt	6
25	6850.103	cyl.head stud	12
26	1611.082	middle supp.bearing std.	2
26	1611.083	middle supp.bearing -0,25	2
26	1611.084	middle supp.bearing -0,50	2
27	8460.055	locating dowel	2
28	4670.062	copper gasket diam. 6,2 X 10 X 1,5	1
29	1760.001	bolt M 6 X 1 X 10	1
30	8676.081	GEAR SIDE MIDDLE SUPPORT	1
31	9080.182	plug diam.10	1
32	1213.349	seal ring	1
33	1770.156	bolt M 8 X 1,25 X 25	7
34	3835.066	clutch bell	1
36	4936.049	gear	1
37	1301.140	ring	1
38	1213.351	ring	1
39	8675.108	CRANKSH.SUPP. -0,25	1
39	8675.109	CRANKSH.SUPP. -0,50	1
39	8676.077	CRANKSH.SUPP. std.	1
40	9765.109	screw M 14	1
41	8965.036	plug	1
42	1611.089	bearing std. (flyheel side)	1
42	1611.090	bearing -0,25 (flywheel side)	1
42	1611.091	bearing -0,50 (flywheel side)	1
43	4701.056	gasket	1

Group: 11LD
Engine: 11LD 535-3 Drawing: B

CONN.ROD/PISTON/CYLINDER/CRANKSHAFT/FLYWHEEL/CRANKCASE/FLANGING/MOUNTS

POS.	CODE	DESCRIPTION	Qty
44	8675.293	bearing housing (rear)	1
45	9765.114	screw M 6 X 16	1
46	9732.092	screw M 8 X 18	4
47	2032.083	bell interc. Gr. 8-9	1
48	7565.011	washer diam.10	11
49	8240.033	nut M 10	11
50	2816.045	crown gear	1
51	9880.167	FLYWHEEL Ass.Y std	1
51	9880.178	FLYWHEEL ASS.Y	1
52	9732.037	screw M 10 X 40	8
55	8990.022	eXpansion plug diam.30	1
56	8990.052	plug diam. 8	5
57	«-----»	see Pos. B 39	0
59	4601.044	gasket	1
60	6429.047	engine mount	4
61	1510.272	CRANKCASE	1
62	7565.011	washer diam.10	16
63	1780.007	bolt M 10 X 1,5 X 35	16
64	4431.145	gasket	1
65	2710.062	cover	1
67	9730.107	screw M 6 X 14	3
68	2615.040	camshaft cover	1
69	4431.146	gasket	1
70	9732.074	screw M 8 X 20	9
71	6647.060	gear cover	1
72	9730.031	screw M 8 X 40	3
73	9730.024	screw M 8 X 16	1
74	2615.039	cover	1
75	4501.110	gasket	1
78	1770.156	bolt M 8 X 1,25 X 25	3

B
11LD



**LOMBARDINI**

A KOHLER COMPANY

Group: 11LD

Engine: 11LD 535-3 Drawing: D

CONTROLS/LUBRICATING SYSTEM

POS.	CODE	DESCRIPTION	Qty
1	7350.052	oil cooler	1
2	9485.177	oil pipe mm 400	1
3	<----->	oil cooler	0
9	2690.148	accel. and stop hand control	1
11	2690.149	accel. and stop remote control	1
12	9730.032	screw M 8 X 45	2
13	9485.176	oil pipe mm 175	1
14	9732.092	screw M 8 X 18	3
15	4775.422	cooler guard	1
16	1770.001	bolt M 8 X 1,25 X 12	1
17	7625.012	washer diam. 8,4	1
18	8545.271	brace	1
19	3617.021	clamp	1
20	<----->	see Pos. C 27	0
22	6140.143	pin	1
23	<----->	see Pos. D 9/D 11/D 27	0
24	1200.034	O ring 105	1
25	3240.019	nut M 8 alpha brass	2
26	9180.192	cable end	2
27	2690.173	accel. and stop remote control	1
28	<----->	lever see Pos. D 27	0
29	3240.008	nut M 6	1
30	1760.028	bolt M 6 X 1 X 35	1
31	1760.041	bolt M 6 X 40 (rmp < 2000)	1
32	4340.067	jacket	1
33	3240.008	nut M 6	1
34	5830.119	nut	2
35	5200.178	lever	1
36	1770.056	bolt M 8 X 1,25 X 18	1
37	3240.164	nut M 8	2
38	8965.034	plug M 8	1
39	6780.034	stud M 8 X 95 (107)	1
40	4670.058	copper gasket diam. 8,2X12X1,5	1
41	2175.040	oil filter cartridge	1
42	4670.019	copper gasket diam.16	4
43	5953.036	nipple	4
44	8576.021	eXtra fuel device	1
45	1200.034	O ring 105	1
46	5680.096	spring	1
47	<----->	see Pos. D 9	0
48	6870.021	stud	1
49	7625.098	washer diam. 8,4	1
50	3240.164	nut M 8	1
52	3240.018	nut M 8	2
53	7625.010	washer diam. 8	2
54	6780.028	stud M 8 X 55 (67)	1
55	8965.021	plug M 8	1
56	4670.014	copper gasket diam.12	1
58	3740.160	OIL FILTER	1
59	4730.533	gasket	1
60	6370.137	plate	1
62	4730.533	gasket	1
63	1400.519	dipstick (mm 285)	1

Group: 11LD
Engine: 11LD 535-3 Drawing: D

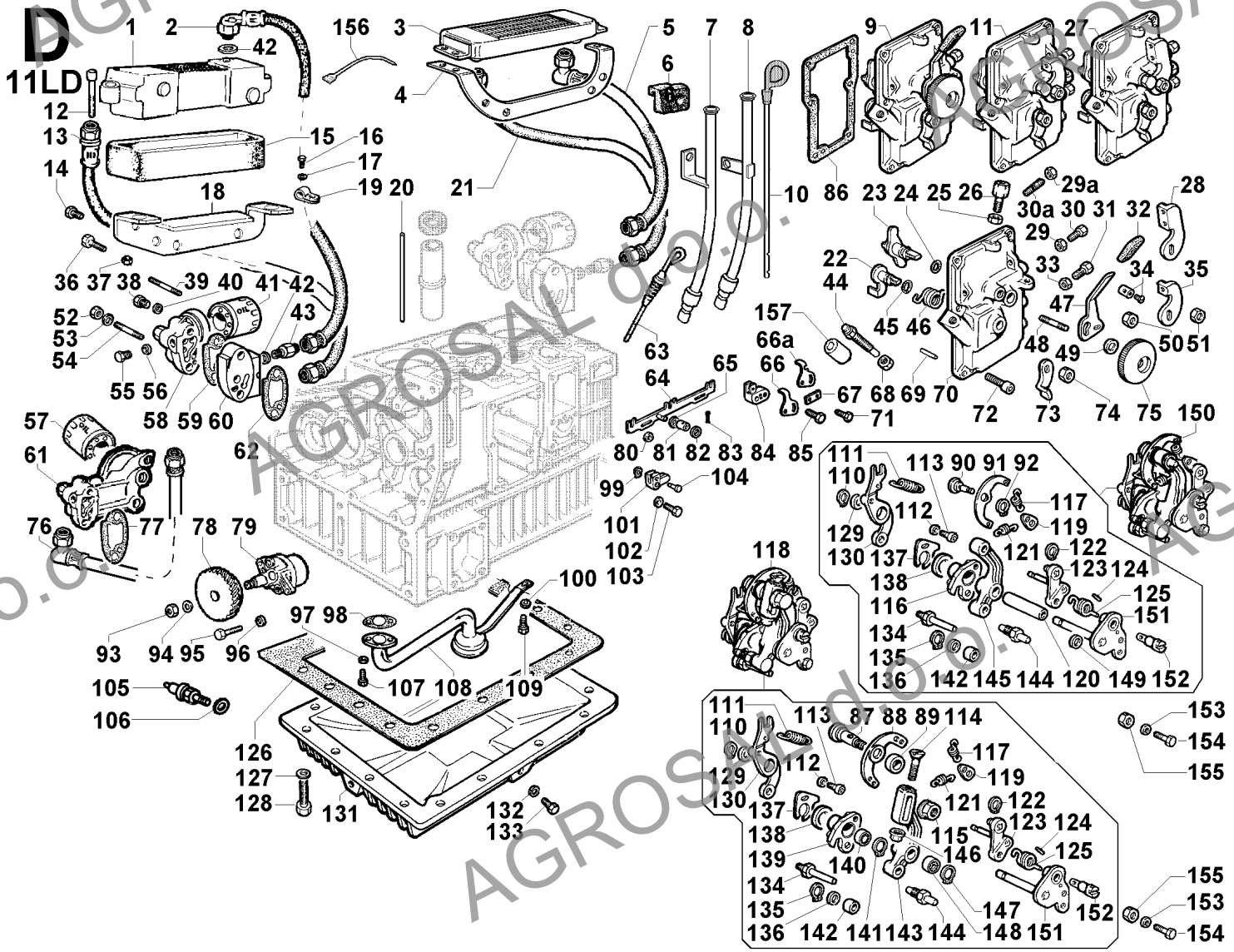
CONTROLS/LUBRICATING SYSTEM

POS.	CODE	DESCRIPTION	Qty
64	1380.024	CONTROL ROD	1
65	771R.001	washer diam. 5,3	1
66	6275.101	plate	1
67	«-----»	safety plate	0
68	3240.061	nut M 12	1
69	8460.055	locating dowel	2
70	«-----»	see Pos. D 9/D 11/D 27	0
71	1760.003	bolt M 6 X 1 X 12	1
72	9730.100	screw M 8 X 25	6
73	5200.178	lever	1
74	3240.164	nut M 8	1
75	6545.009	knob	1
78	4936.051	gear	1
79	6605.062	lub.oil pump	1
80	1971.044	sleeve	2
81	1580.023	bushing	1
82	771R.001	washer diam. 5,3	1
83	2800.003	cotter pin	1
84	«-----»	see Pos. D 64	0
85	1760.010	bolt M 6 X 1 X 30	1
86	4775.524	gasket	1
90	6110.077	pin	1
91	«-----»	see Pos. D150	0
92	1240.001	snap ring	1
93	3240.036	nut M 10	1
94	7565.011	washer diam.10	1
95	1770.031	bolt M 8 X 1,25 X 50	2
96	7565.007	washer diam. 8	2
97	7565.004	washer diam. 6	2
98	4501.025	gasket	1
99	1165.001	circlip	2
100	7565.007	washer diam. 8	1
101	«-----»	support - see Pos. D 64	0
103	1760.006	bolt M 6 X 1 X 20	1
104	6210.031	pin	2
107	1760.006	bolt M 6 X 1 X 20	2
108	3740.058	oil filter	1
109	1770.002	bolt M 8 X 1,25 X 16	1
110	1240.002	circlip diam. 8	1
111	5550.027	eXtra fuel spring	1
112	7625.012	washer diam. 8,4	1
113	9730.138	screw M 8 X 16	1
116	5200.257	lever	1
117	5655.349	speed g.spring R.P.M. 2000 >	1
119	6370.489	plate	1
120	1971.045	sleeve	1
121	5655.349	speed g.spring R.P.M. 2000 >	1
122	1240.001	snap ring	1
123	«-----»	lever - see Pos. D 118/150	0
124	8430.023	lockpin 3 X 16	1
125	5680.082	spring	1
126	4601.045	gasket	1
127	7555.029	washer diam. 8	26

Group: 11LD
Engine: 11LD 535-3 Drawing: D

CONTROLS/LUBRICATING SYSTEM

POS.	CODE	DESCRIPTION	Qty
128	1770.155	bolt M 8 X 1,25 X 30	26
129	7626.097	washer	1
130	«-----»	see Pos. D 118/D 150	0
131	6645.132	oil pan	1
132	4670.016	copper gasket diam.14	2
133	8965.005	oil drain plug M 14	2
134	«-----»	pin - see Pos. D 118/D 150	0
135	1175.042	ring	1
136	7625.106	washer diam. 7,1	1
137	6366.012	plate	1
138	«-----»	washer - see Pos. D118/150	0
142	1301.156	ring	1
144	«-----»	pin - see Pos. D 118/D 150	0
149	1257.025	ring	1
150	5200.740	contr.lever R.P.M.>2400	1
151	«-----»	see Pos. D 118/D 150	0
152	6140.130	pin	1
153	7565.007	washer diam. 8	2
154	1770.056	bolt M 8 X 1,25 X 18	2
155	3240.018	nut M 8	2



**LOMBARDINI**

A KOHLER COMPANY

Group: 11LD

Engine: 11LD 535-3 Drawing: F

COOLING SYSTEM/STARTING

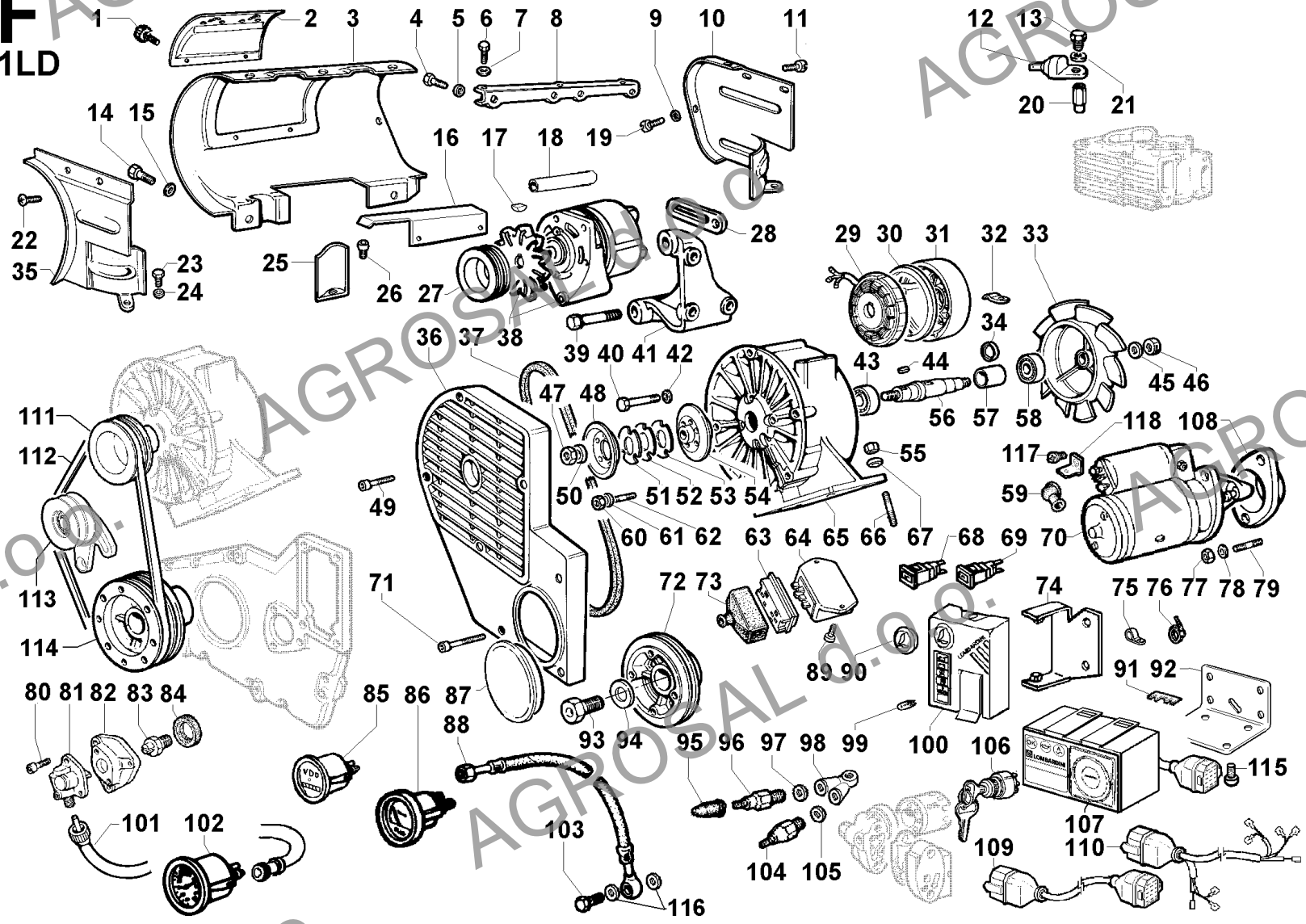
POS.	CODE	DESCRIPTION	Qty
1	9895.055	pivot	2
2	6660.028	pan	1
3	2569.372	shroud	1
4	1760.032	bolt M 6 X 1 X 14	4
5	7625.062	washer diam. 6,5	4
6	1770.056	bolt M 8 X 1,25 X 18	3
7	7625.012	washer diam. 8,4	3
8	5066.061	airtight plate	1
9	7625.062	washer diam. 6,5	2
10	5066.055	airtight plate	1
11	9790.039	screw M 6 X 12	2
14	1770.056	bolt M 8 X 1,25 X 18	2
15	7625.012	washer diam. 8,4	2
19	9790.039	screw M 6 X 12	2
22	9790.047	screw M 6 X 16	2
23	1770.002	bolt M 8 X 1,25 X 16	2
24	7625.012	washer diam. 8,4	2
25	3350.077	deflector	2
26	9731.092	screw M 8 X 14	2
29	1157.158	volt.alternator 12V 14A - 3 wires	1
29	1157.159	volt.alternator 12V 21A - 3 wires	1
31	2086.050	alternator bell (21 A)	1
31	2086.051	bell for blower without alternator or with 14A alternator	1
32	3617.024	clamp	1
33	9718.108	blower	1
34	3450.051	spacer	1
35	5066.056	panel	1
36	6927.517	belt guard	1
37	2440.034	belt (R.P.M.2000 >) mm 803	1
40	1760.084	bolt M 6 X 1 X 75	4
42	7625.007	washer diam. 6	4
43	3003.052	ball bearing	1
44	2200.004	key	1
45	7625.055	washer diam.12,5	1
46	3203.015	nut	1
48	6975.134	PULLEY diam 86 (R.P.M.2000 >)	1
49	9732.063	screw M 8 X 35	2
50	7625.055	washer diam.12,5	1
51	6320.034	spacer 2,00	1
52	6320.035	plate 1,00 diam. 53 (R.P.M.2000 >)	1
53	6320.036	plate 0,50 diam. 53 (R.P.M.2000 >)	1
54	«-----»	half-pulley R.P.M.2000 > - see Pos. F 48 (6975.134)	0
55	3240.018	nut M 8	4
56	1105.017	blower shaft	1
57	3450.050	spacer (for blower with 14A alternator)	1
57	3450.051	spacer	1
57	3450.052	spacer (without inside alternator or with eXtern.altern)	1
58	3002.032	ball bearing	1
59	6491.005	pipe elbow	1
60	3240.008	nut M 6	3
61	7565.004	washer diam. 6	3
62	6760.047	stud M 6 X 16	3
63	6740.153	inlet regul.Saprisa	1

Group: 11LD
Engine: 11LD 535-3 Drawing: F

COOLING SYSTEM/STARTING

POS.	CODE	DESCRIPTION	Qty
63	6740.154	inlet regul.Ducati	1
64	7362.228	voltage regulator. 12V 14/26A-6 contacts for alternator 3 wires	1
65	8565.050	alternator stator	1
65	9718.198	FAN ASS.Y with 21A voltage alternator	1
65	9718.199	FAN ASS.Y with 14A voltage alternator	1
66	6780.008	stud M 8 X 20 (32)	4
67	7565.007	washer diam. 8	4
68	<----->	lampe-socket - no longer avail.	0
70	5840.261	starting motor 12 V HP 2,5 Bosch	1
71	9730.032	screw M 8 X 45	5
72	6975.115	pulley diam. 142 (R.P.M.2000 >)	1
73	2145.014	regulator cap	1
74	8506.042	brace	1
75	3617.020	clamp	1
76	2471.006	collar	1
77	3240.048	nut	2
78	7565.013	washer diam.12	2
79	6820.014	stud M 12 X 30 (48)	2
89	9732.074	screw M 8 X 20	2
90	<----->	switch cover	0
93	1805.025	bolt	1
94	7625.265	washer	1
95	6491.013	pipe elbow	1
96	6745.050	oil switch 0,3 bar (M 12)	1
97	4670.014	copper gasket diam.12	1
99	5175.162	lamp 12V	2
100	2900.110	dashboard 2 lights	1
104	5040.098	pressure switch (M 14)	1
105	4670.061	copper gasket diam.14	1
106	5041.020	key switch	1
107	7245.417	dashboard 3 warning lights	1
108	<----->	flange	0
109	2185.882	eXtension wire	1
109	2185.893	eXtension wire	1
110	2185.873	wiring harness for dashboard 6 warning lights	1
110	2185.891	wiring harness for dashboard 3 warning lights	1
115	9730.325	screw M 5 X 10	4

F
11LD



**LOMBARDINI**

A KOHLER COMPANY

Group: 11LD

Engine: 11LD 535-3 Drawing: C

CYLINDER HEAD/ROCKER ARM BOX/VALVES/TIMING/SPEED GOVERNOR

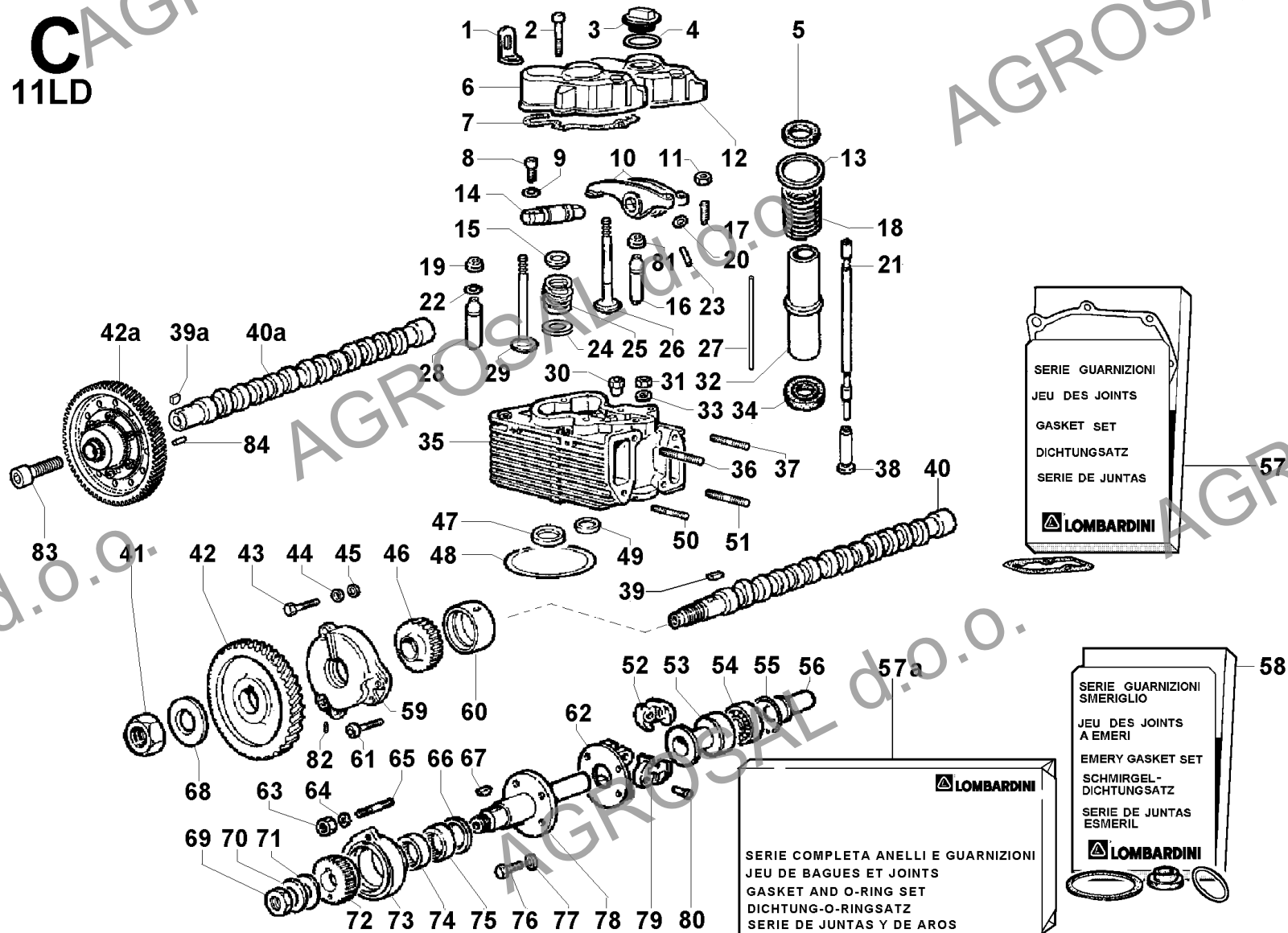
POS.	CODE	DESCRIPTION	Qty
1	8506.003	engine lifting eye	3
2	9732.075	screw M 8 X 50	6
3	9032.079	FILLER OIL CAP M 36X3	1
4	1200.015	O ring 137 for filler oil cap	1
5	4740.029	gasket	3
6	2125.339	rocker arm cover	2
7	4400.061	rocker cov.gasket 0,80	3
8	9730.100	screw M 8 X 25	6
9	7565.007	washer diam. 8	6
10	4330.036	ROCK.ARM ASS.Y std	3
11	3240.010	nut M 7	6
12	2125.338	rocker arm cover with hole for oil filler	1
13	7625.108	washer	3
14	6045.040	rocker arm shaft	3
15	6410.018	retainer with half-collets	6
16	<----->	eXhaust v.guide +0,50	0
16	4845.248	eXhaust v.guide std.	3
17	9850.002	rocker arm adjuster	6
18	5801.153	spring	3
19	1213.338	seal ring for valve	3
20	1350.011	ring	3
21	1410.053	push rod	6
22	<----->	circlip	0
23	9455.053	rocker shaft lub.pipe	3
24	3430.067	spring seat (bottom)	6
25	5755.173	valve spring	6
26	9685.146	eXhaust valve	3
27	9455.131	lubricating pipe	3
28	<----->	inlet v.guide +0,50	0
28	4845.247	inlet v.guide std.	3
29	9652.153	intake valve	3
30	3300.227	elongated nut	4
31	3240.124	nut	12
32	9520.053	guard tube	3
33	<----->	washer diam.10,5	0
34	4740.029	gasket	3
35	9200.344	CYLINDER HEAD	3
36	6780.031	stud M 8 X 75 (87)	3
37	6780.084	stud M 8 X 40 (52)	3
38	7215.043	tappet	6
39	2280.056	crankshaft wooddruff key	1
40	<----->	camshaft (R.P.M. > 2201)	0
41	3260.044	nut	1
42	4936.050	gear	1
43	1770.006	bolt M 8 X 1,25 X 25	3
44	7626.064	washer diam. 8,25	3
45	7565.007	washer diam. 8	3
46	4936.052	gear	1
47	8000.212	inlet v.seat	3
48	<----->	head gasket 1,00	0
48	4730.128	head gasket 0.90	3
48	4730.129	head gasket 0.80	3
48	4730.198	head gasket 0,65	3

Group: 11LD
 Engine: 11LD 535-3 Drawing: C

CYLINDER HEAD/ROCKER ARM BOX/VALVES/TIMING/SPEED GOVERNOR

POS.	CODE	DESCRIPTION	Qty
48	4730.199	head gasket 0,75	3
48	4730.317	head gasket 1,10	3
49	8000.213	exhaust v.seat	3
50	6780.084	stud M 8 X 40 (52)	3
51	6780.034	stud M 8 X 95 (107)	3
52	<----->	see Pos. C 62	0
53	6410.048	GOVERNOR ROD	1
54	3010.055	ball bearing	1
55	1160.012	circlip	1
56	<----->	see Pos. C 53	0
57a	8205.100	RING AND GASKET COMPLETE SET	1
58	<----->	EMERY GASKET SET - see Pos. C 57a	0
59	2086.169	bell	1
60	<----->	camshaft bearing -0,50	0
60	1600.062	camshaft bearing std.	1
60	1600.063	camshaft bearing -0,25	1
61	9730.100	screw M 8 X 25	3
62	5496.108	WEIGHT SP.GOV.R.P.M. 2000 >	1
63	3240.018	nut M 8	2
64	7565.007	washer diam. 8	2
65	6780.052	stud M 8 X 18 (28)	2
66	7352.022	thrust washer	1
67	2280.061	key 3X3,7X10	1
68	5715.005	washer	1
69	3240.066	nut M 10	1
70	7748.023	washer	1
71	7625.020	washer diam.10,5	1
72	4936.053	gear	1
73	<----->	governor support - see Pos. 78	0
74	1585.052	bushing	1
76	9730.003	screw M 5 X 10	4
77	7565.003	washer diam. 5	4
78	7362.152	SPEED GOVERN. R.P.M. > 2001	1
79	<----->	see Pos. C 62	0
80	8445.021	taper pin	2
82	9765.056	screw M 5 X 5	1

C
11LD



SERIE GUARNIZIONI
 JEU DES JOINTS
 GASKET SET
 DICHTUNGSATZ
 SERIE DE JUNTAS

57

LOMBARDINI

SERIE GUARNIZIONI
 SMERGLIO
 JEU DES JOINTS
 A EMERI
 EMERY GASKET SET
 SCHMIRGEL-
 DICHTUNGSATZ
 SERIE DE JUNTAS
 ESMERIL

58

LOMBARDINI

LOMBARDINI

SERIE COMPLETA ANELLI E GUARNIZIONI
 JEU DE BAGUES ET JOINTS
 GASKET AND O-RING SET
 DICHTUNG-O-RINGSATZ
 SERIE DE JUNTAS Y DE AROS

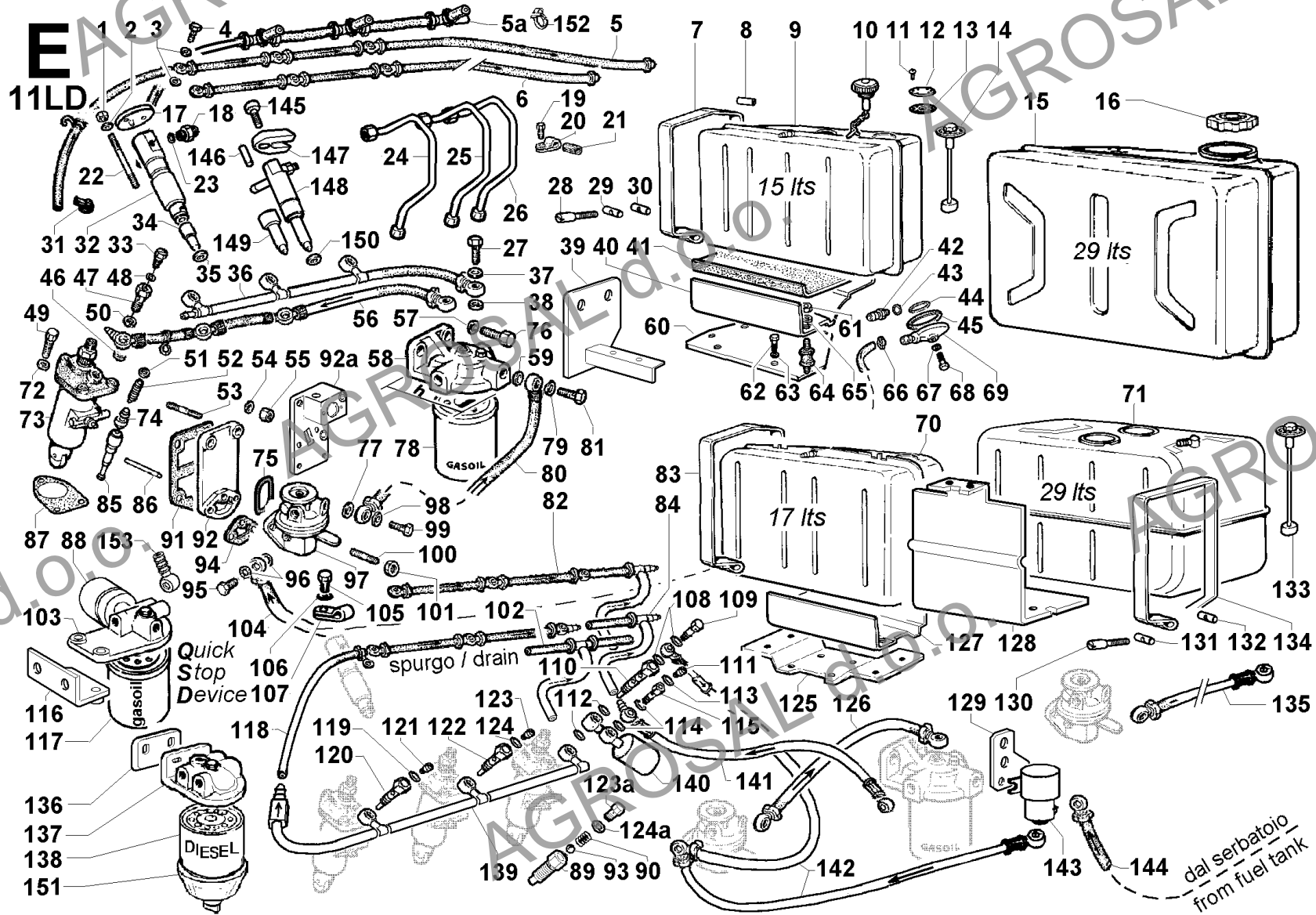
**FUEL SYSTEM**

POS.	CODE	DESCRIPTION	Qty
1	3203.050	selflocking nut M 6	6
2	7565.004	washer diam. 6	6
3	4670.058	copper gasket diam. 8,2X12X1,5	6
4	1901.029	union bolt M 8	3
5	9375.762	bleeding pipe mm 932	1
7	3616.082	fuel tank strap	2
8	9600.057	rubber spacer	2
9	8103.021	fuel tank 15 liters	1
10	9043.025	fuel tank cap	1
11	9761.001	screw M 4 X 0,7 X 12	6
12	5055.023	plate	1
13	4776.040	gasket	1
17	3790.074	injector top plate	3
18	7301.006	connection	3
19	9730.115	screw M 5 X 14	3
20	3616.018	injector feed pipe saddle	3
21	5400.046	rubber sheathing	3
22	6760.045	stud M 6 X 65 (80)	6
23	«-----»	gasket	0
24	9376.059	gear s.pipe	1
25	9376.058	high pressure middle pipe	1
27	1901.032	union bolt M 14	1
28	9730.139	screw M 6 X 60	2
29	1557.019	drilled block	2
30	1557.020	threaded block	2
31	3630.050	clamp dia 9-11	1
32	6615.018	NOZZLE-HOLDER	3
33	1901.171	deaeration plug	3
34	6531.265	nozzle	3
35	4670.005	copper gasket 0,50	3
35	4670.006	copper gasket 1,00	3
36	9375.613	f.hose mm 344	1
37	4670.061	copper gasket diam.14	1
40	8042.024	fuel tank saddle	1
41	8315.016	rubber shim	1
42	«-----»	union	0
44	4490.017	gasket	1
45	4430.071	gasket	1
46	4670.060	copper gasket diam.12	3
47	1901.031	union bolt M 12	3
48	4670.001	copper gasket diam. 6,2 X 10 X 1	3
49	1770.156	bolt M 8 X 1,25 X 25	9
50	4670.060	copper gasket diam.12	3
51	7470.003	filler	3
52	5755.034	valve spring	3
53	6780.008	stud M 8 X 20 (32)	2
54	7565.007	washer diam. 8	2
55	3240.018	nut M 8	2
56	9375.613	f.hose mm 344	1
57	7555.008	washer diam.10	2
58	3730.153	FUEL FILTER	1
59	4670.061	copper gasket diam.14	1
60	6370.515	tank plate	1

Group: 11LD
Engine: 11LD 535-3 Drawing: E

FUEL SYSTEM

POS.	CODE	DESCRIPTION	Qty
61	3240.018	nut M 8	4
62	1770.005	bolt M 8 X 1,25 X 22	4
63	7565.007	washer diam. 8	4
64	8636.001	vibration-damping	4
65	7625.012	washer diam. 8,4	4
66	8630.008	clamp	1
67	1202.052	rubber oil seal	1
68	1760.162	bolt	1
69	2605.033	filter cover	1
72	«-----»	washer diam. 8 - no more fitted	0
73	6590.372	class B injection pump	3
74	9672.012	delivery valve BOSCH	3
75	1200.087	O ring 3150	1
76	1780.004	bolt M 10 X 1,5 X 22	2
77	4670.059	copper gasket diam.10	1
78	2175.046	fuel filter cartridge	1
79	4670.061	copper gasket diam.14	1
81	1901.032	union bolt M 14	1
85	6578.200	inject.plunger Stanadyne	3
86	7200.167	drive rod	1
87	4580.001	gasket 0,10	3
87	4580.008	gasket 0,50	3
87	4580.012	gasket 0,30	3
87	4580.039	gasket 0,05	3
91	«-----»	gasket	0
92	2655.032	cover	1
94	«-----»	gasket	0
95	1901.030	union bolt M 10	1
96	4670.059	copper gasket diam.10	2
97	6585.079	feed pump	1
98	4670.059	copper gasket diam.10	1
99	1901.030	union bolt M 10	1
100	6780.070	stud M 8 X 30 (42)	2
101	3240.164	nut M 8	2
104	9375.721	fuel pipe mm 850	1
105	1770.042	bolt M 8 X 1,25 X 10	1
106	7565.007	washer diam. 8	1
107	3617.088	clamp dia. 9,5	1





LOMBARDINI

A KOHLER COMPANY

Group: 11LD

Engine: 11LD 535-3 Drawing: Z

SHORT BLOCK

POS.	CODE	DESCRIPTION	Qty
1	«-----»	short block not available	0

Z
11LD

