

AGROSAL d.o.o.



LDW 502



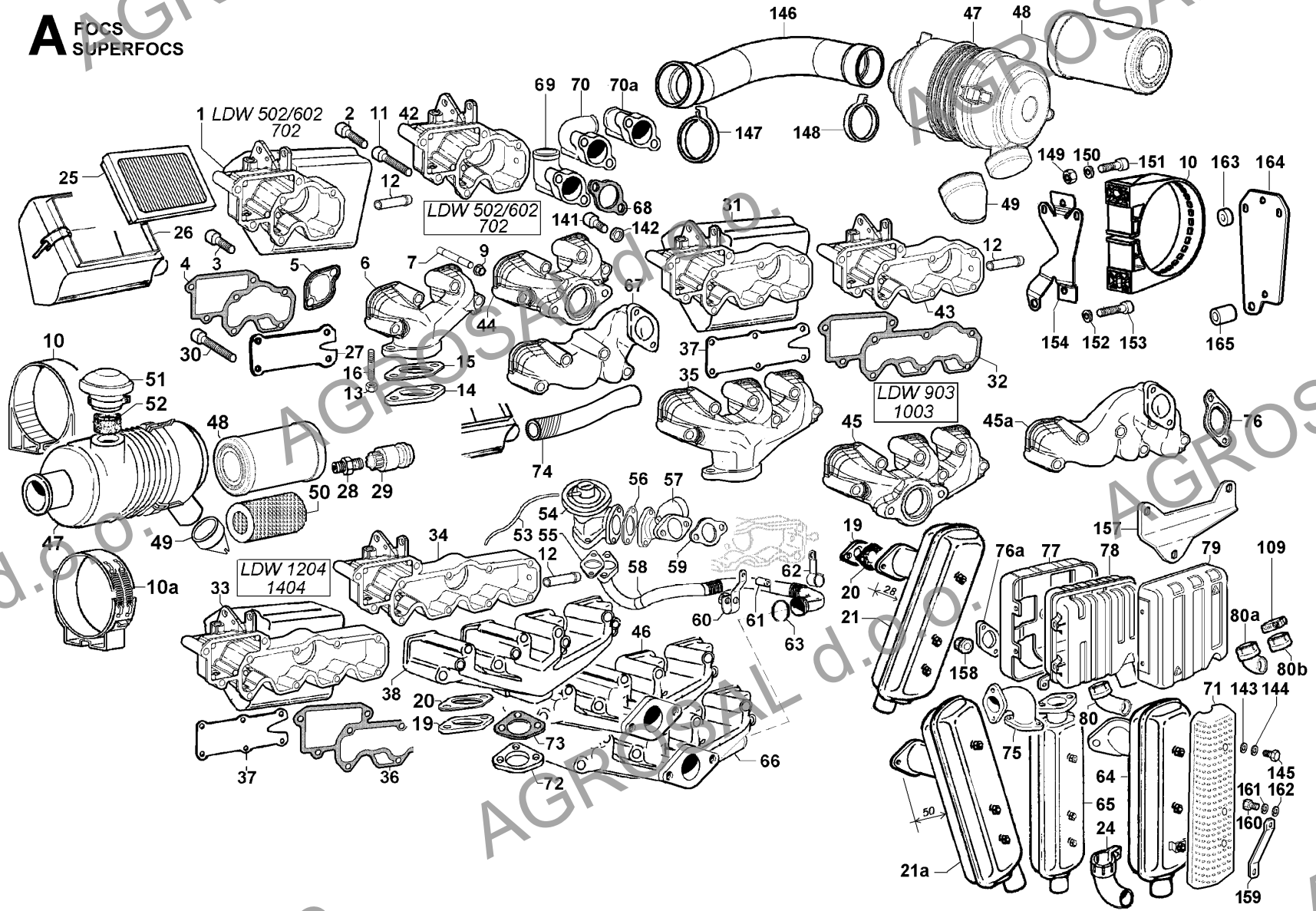
AGROSAL d.o.o.

Gregorčičeva ulica 38, 5270 Ajdovščina
telefon: 05 368 90 96, fax: 05 368 90 97
e-mail: info@agrosal.si, www.agrosal.si

**INTAKE AND EXHAUST**

POS.	CODE	DESCRIPTION	Qty
1	8741.183	air cleaner support	1
2	9730.031	screw M 8 X 40	2
3	9732.064	screw M 8 X 30	1
4	4420.080	inl.manifold gasket	1
5	4420.070	eXh.manifold gasket	2
6	2486.229	eXhaust manifold	1
7	6780.028	stud M 8 X 55 (67)	4
9	3240.163	nut M 8	4
11	9731.040	screw M 8 X 60	1
12	9305.081	blow-by pipe	1
13	3240.163	nut M 8	2
14	3825.020	flange for muffler	1
15	4420.076	eXhaust gasket	1
16	6780.171	stud M 8 X 22	2
19	3815.013	eXh.flange h=7,5	1
20	4501.118	gasket	1
21	5460.291	muffler with horiz.inlet flange	1
24	9170.052	muffler end (diam. 39,5/42)	1
25	2175.164	air clean.cartridge	1
26	2605.100	cover (flywheel side inlet)	1
26	2605.101	cover (gear side inlet)	1
27	5055.055	panel	1
28	7325.009	union M 10X1 h=21	1
30	9730.035	screw M 8 X 65	5
42	2486.265	inlet manifold	1
44	2486.240	eXh.manifold with front outlet	1
67	2486.483	ehXaust manifold	1
68	4501.081	gasket	1
69	3866.101	inlet flange	1
69	3867.009	inlet flange fitted for dust indicator	1

A FOCS
SUPERFOCS



**LOMBARDINI**

A KOHLER COMPANY

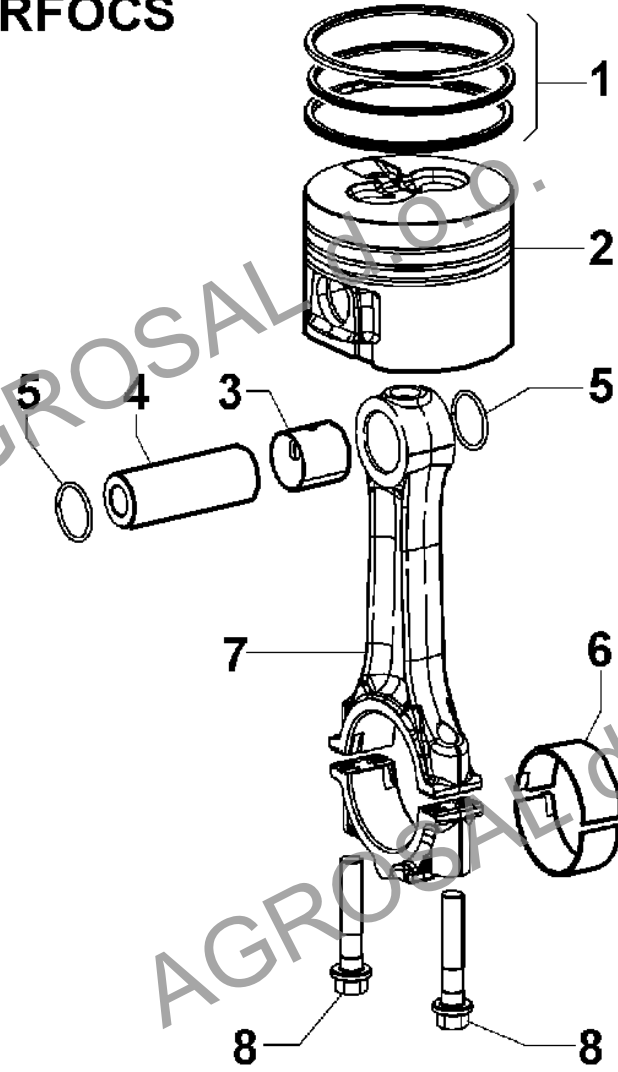
Group: FOCS-SUPERFOCS

Engine: LDW 502 Drawing: B

CONNECTING ROD/PISTON SET

POS.	CODE	DESCRIPTION	Qty
1	8211.141	ring set std.	2
1	8211.142	ring set +0,50	2
1	8211.143	ring set +1,00	2
2	6501.101	PISTON SET std	2
2	6501.102	PISTON SET +0,50	2
2	6501.103	PISTON SET +1,00	2
3	1630.035	small end bushing	2
4	8480.087	gudgeon pin (diam.18)	2
5	1261.091	snap ring	4
5	1261.099	circlip for die-cast crankcase	4
6	1640.116	big end bushing std.	2
6	1640.117	big end bushing -0,25	2
6	1640.118	big end bushing -0,50	2
7	1526.172	CONNECTING ROD std for citycar	2
7	1526.199	CONNECTING ROD -0,25 for citycar	2
7	1526.200	CONNECTING ROD -0,50 for citycar	2
7	1526.270	CONNECTING ROD	2
8	1770.101	bolt M 8 X 1 X 42	4

B FOCS SUPERFOCS



**LOMBARDINI**

A KOHLER COMPANY

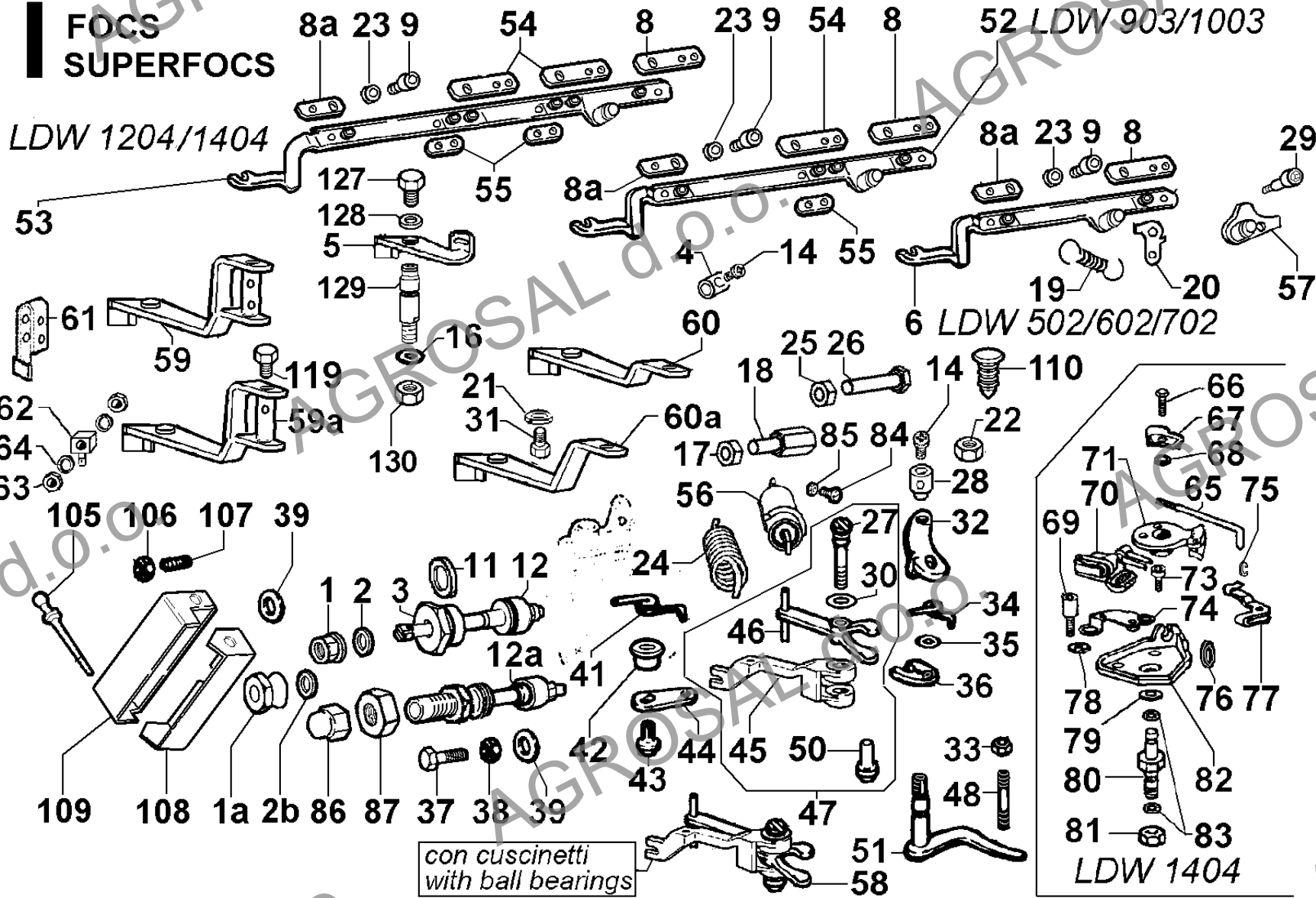
Group: FOCS-SUPERFOCS
Engine: LDW 502 Drawing: I**CONTROLS**

POS.	CODE	DESCRIPTION	Qty
1	3240.153	nut M 6	1
2	4670.062	copper gasket diam. 6,2 X 10 X 1,5	1
3	«-----»	locking nut M 10 (Es.16)	0
4	6000.049	nut	1
5	5201.339	lever	1
6	1380.103	INJECTION PUMP CONTROL ROD	1
8	6320.073	plate	1
8a	«-----»	plate - no longer available	0
9	9732.096	screw M 3 X 6	2
11	4480.046	gasket 16X20	1
12	8576.076	eXt.f.device->3200 R.P.M.	1
12	8576.077	eXtra fuel device	1
14	9790.023	screw M 5 X 7	1
16	1200.052	O ring	1
17	3240.009	nut	2
18	9180.191	adjuster M 6	2
19	5655.257	device spring	1
20	«-----»	plate	0
21	771R.001	washer diam. 5,3	1
22	3203.075	nut M 8	1
23	7626.037	washer	2
24	5655.185	spring (black) 3600R.P.M.	1
24	5655.210	spring (red) 3000R.P.M.	1
24	5655.241	spring (light blue) 1500 R.P.M.	1
25	3240.008	nut M 6	2
26	1760.128	adjusting bolt M 6X25	2
27	6110.101	control lever pin	1
28	6000.049	nut	1
29	9865.202	screw M 3 X 10	2
30	1200.037	rubber oil seal	1
31	1755.001	bolt M 5 X 0,8 X 8	1
32	5200.414	lever	1
33	3240.008	nut M 6	1
34	5660.047	stop lever recovery spring	1
35	1200.051	rubber oil seal	1
36	6275.114	locking plate	1
37	1760.128	adjusting bolt M 6X25	1
38	3203.048	nut M 6	1
39	4670.062	copper gasket diam. 6,2 X 10 X 1,5	1
41	5660.065	recovery spring	1
42	1957.014	sleeve	1
43	1760.081	screw M 6 X 20	1
44	5200.674	internal lever	1
45	«-----»	see Pos. 47+...	0
46	6140.420	journal	1
47	4896.360	GOVERNOR LEVER ASS.Y	1
48	6760.044	stud M 6 X 7	1
50	1954.020	sleeve	1
51	5200.413	lever	1
57	6370.331	locking plate	1
58	4896.330	governor ass.y with ball bearing	1
127	1755.001	bolt M 5 X 0,8 X 8	1
128	7625.285	washer diam. 5,3	1

CONTROLS

POS.	CODE	DESCRIPTION	Qty
129	6140.550	lever shaft	1
130	3203.050	selflocking nut M 6	1

**FOCS
SUPERFOCS**



**LOMBARDINI**

A KOHLER COMPANY

Group: FOCS-SUPERFOCS

Engine: LDW 502 Drawing: G

COOLING SYSTEM

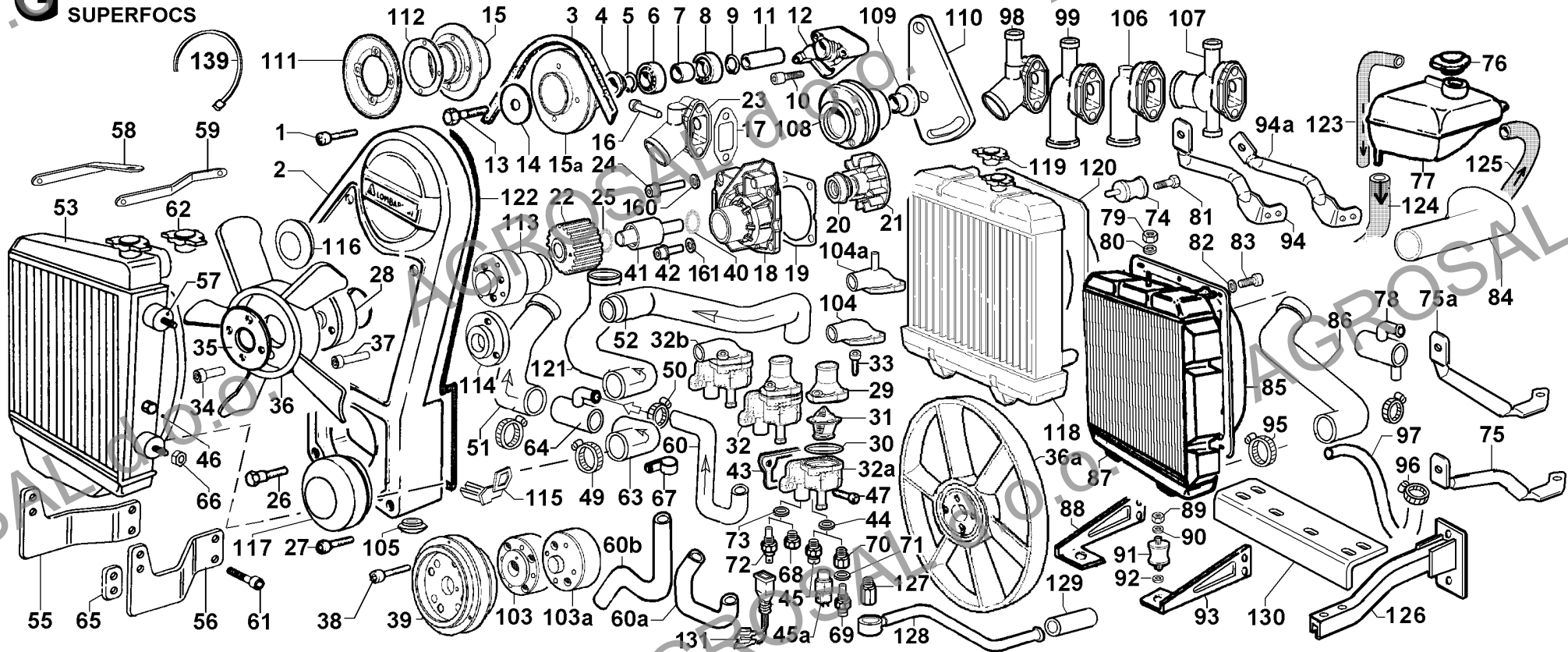
POS.	CODE	DESCRIPTION	Qty
1	9730.015	screw M 6 X 30	1
2	6927.504	belt guard	1
3	2400.107	belt mm 778	1
3	2440.306	belt mm 590	1
4	7590.007	washer	1
5	1240.039	snap ring	1
6	3002.032	ball bearing	1
7	3466.046	spacer	1
8	3002.032	ball bearing	1
9	1240.039	snap ring	1
10	9730.031	screw M 8 X 40	3
11	«-----»	jockey pin mm 50,6 - see Pos. G108	0
11	6205.028	pulley pin mm 63,5	1
12	8850.053	fan support	1
13	1770.022	bolt M 8 X 1,25 X 90	1
13	1770.157	bolt M 8 X 1,25 X 75	1
14	7515.006	washer	1
15	7051.166	PULLEY ASS. for engine with alternator into flywheel	1
15a	7051.165	PULLEY ASS. for engine with external alternator	1
16	9730.016	screw M 6 X 35	2
17	4501.158	gasket	1
18	6584.438	COOL.PUMP	1
19	4580.215	pump body gasket	1
20	«-----»	see Pos. 18	0
23	3866.046	flange	1
24	1770.178	screw M 8 X 1,25 X 35	2
25	«-----»	circlip	0
27	9732.016	screw M 6 X 40	4
28	3810.066	fan flange h=mm 30,5	1
29	2750.279	thermostat cover	1
30	1200.091	O ring	1
31	9195.124	thermal eXpans.valve	1
32	4896.208	THERMOSTAT with water temperature sensor (G 45)	1
32a	2871.274	thermostat ass.y body	1
32b	4896.259	THERMOSTAT with water temperature sensor (G 45) and horiz.inlet	1
33	9732.074	screw M 8 X 20	2
34	9730.012	screw M 6 X 20	4
35	6275.167	plate (for fan diam.280)	1
36	9718.235	suction fan diam.280	1
36	9718.333	blower fan diam.280	1
37	9730.016	screw M 6 X 35	4
38	9732.016	screw M 6 X 40	4
39	7051.143	pulley 1 groove d.=105 h 38,4	1
39	7051.144	pulley 1 groove d.= 85 h 38,4	1
40	«-----»	circlip	0
42	1770.160	screw M 8 X 1,25 X 16	2
43	4460.037	gasket	1
44	4670.019	copper gasket diam.16	1
45	9195.077	thermostat M 16 for water warning light (110°C)	1
46	2569.467	shroud for water cooler single circuit	1
47	9732.064	screw M 8 X 30	2
49	3630.146	clamp diam.25-40	6
50	3630.147	clamp diam.12-22	2

Group: FOCS-SUPERFOCS
Engine: LDW 502 Drawing: G

COOLING SYSTEM

POS.	CODE	DESCRIPTION	Qty
51	5365.069	hose	1
52	5365.070	hose	1
53	7350.385	water cooler single circuit 407X285 (with cap)	1
55	8545.380	right bracket	1
56	8545.381	left bracket	1
57	8636.231	vibration-damping	4
58	9265.157	right brace	1
59	9265.158	left brace	1
60	9305.073	union pipe	1
61	9732.074	screw M 8 X 20	2
62	9000.184	water cooler cap (0,9 bar)	1
63	5365.068	hose	1
64	9305.509	union pipe diam.25	1
65	3527.324	spacer	2
66	3240.008	nut M 6	4
67	3617.089	clamp dia. 20	1
68	9040.012	plug M 14	1
69	9195.050	sensor M 14 for electrical thermometer	1
70	2501.116	hollowstud	1
71	4670.061	copper gasket diam.14	1
72	9195.078	sensor M 14 (for engine with hydr.pump on 1° PTO))	1
72	9195.094	sensor M 14 (12-24V) for preheating plug control box	1
73	4670.061	copper gasket diam.14	1
76	9000.114	water cooler/bowl cap	1
77	9710.105	BOWL	1
98	3866.068	water flange oblique type	1
104	2550.320	thermostat cover	1
105	9000.078	plug	1
111	8075.095	half-pulley	1
112	7550.016	spacer 0,5	2
112	7550.020	spacer 1,0	4

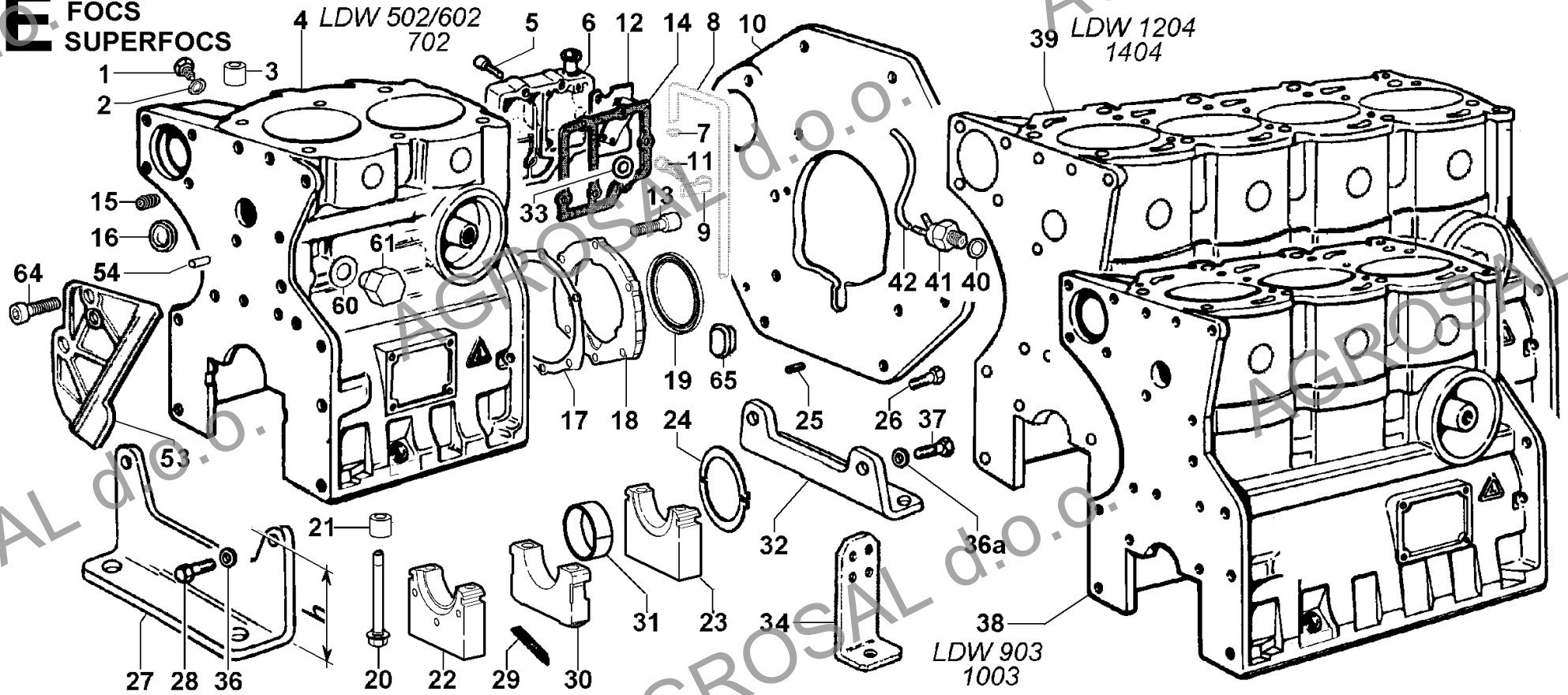
G FOCs
SUPERFOCS



**CRANKCASE/FLYWHEEL SIDE CRANKSHAFT FLANGE/MOUNTS**

POS.	CODE	DESCRIPTION	Qty
1	8965.003	plug M 10	1
2	4670.013	copper gasket diam.10	1
3	1970.140	sleeve	2
4	1510.653	CRANKCASE aluminium	1
4	1510.656	CRANKCASE (cast-iron)	1
5	9730.107	screw M 6 X 14	6
6	2610.072	decanter cover	1
7	«-----»	clamp	0
10	6370.504	flanging plate (thickness 7 mm)	1
11	«-----»	screw	0
13	9730.010	screw M 6 X 16	6
13	9730.016	screw M 6 X 35	6
14	4431.164	gasket	1
15	9765.109	screw M 14	1
15	9765.113	screw M 12	1
16	8990.022	eXpansion plug diam.30	4
17	4501.156	gasket	1
18	3790.078	FLANGE for engine with eXternal altern.or without alternator	1
18	3790.079	FLANGE for engine with flywheel alternat. 30A	1
18	3790.090	FLANGE for engine with flywheel alternat. 40A	1
19	1213.347	seal ring 70X88X8	1
20	9820.120	fix. screw	4
21	1970.140	sleeve	4
22	«-----»	see Pos. 4	0
24	1257.081	thrust washer std	2
24	1257.082	thrust washer +0,10	2
24	1257.083	thrust washer +0,20	2
25	8400.108	lockpin 10 X 20	2
27	6429.160	front side eng.mount (h = 108)	1
28	1790.030	bolt M 12 X 1,75 X 25	4
29	4400.054	gasket	4
31	1611.188	supp.bearing std.	2
31	1611.189	supp.bearing -0,25	2
31	1611.190	supp.bearing -0,50	2
32	6429.250	rear side eng.mount	1
33	1200.035	O ring 107	1
34	6429.218	rear side mount	2
36	7645.007	washer diam.12	4
36a	7625.012	washer diam. 8,4	2
37	1770.004	bolt M 8 X 1,25 X 20	2
54	8430.105	taper pin 8X16	1

E FOCS
SUPERFOCS



**LOMBARDINI**

A KOHLER COMPANY

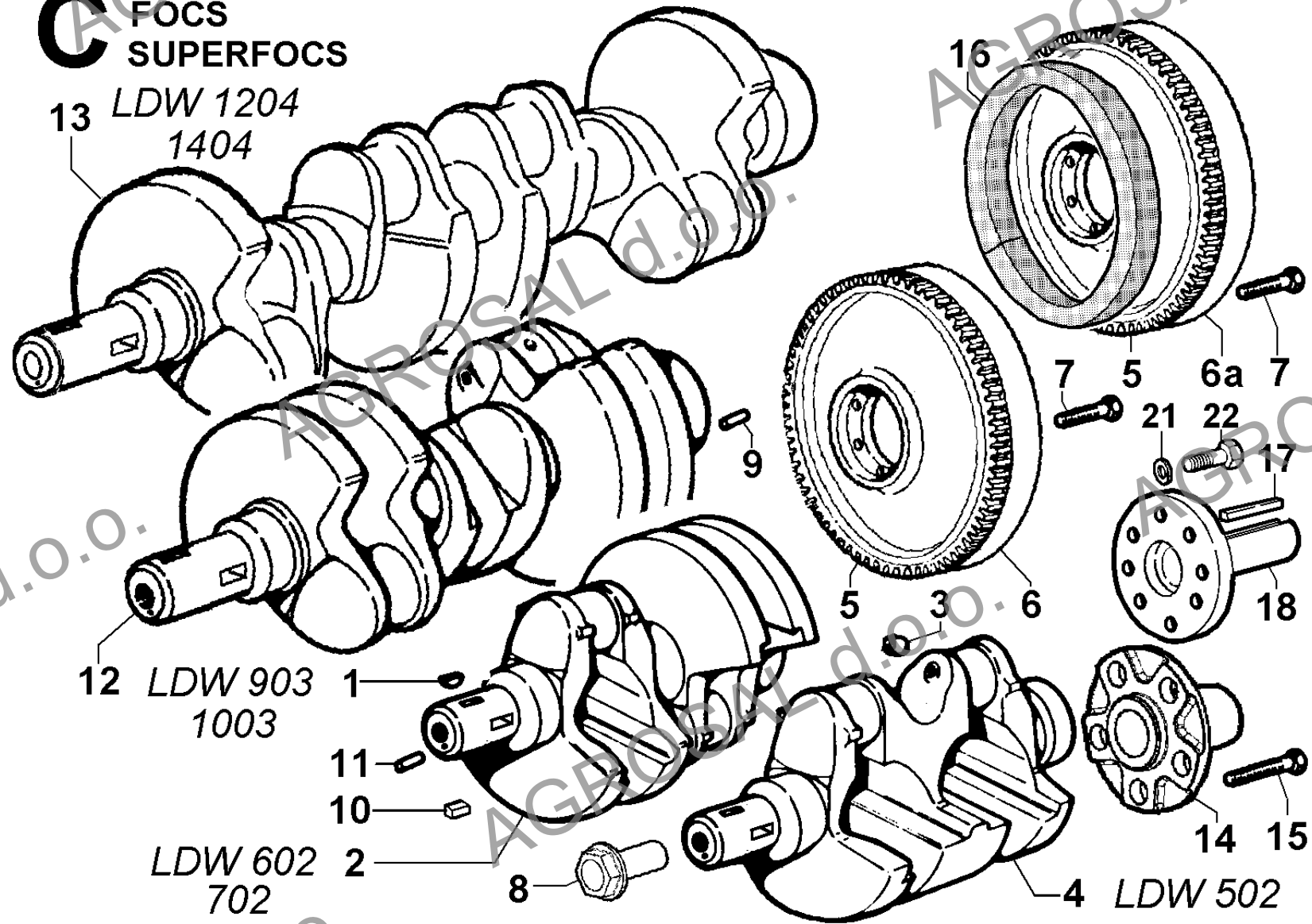
Group: FOCS-SUPERFOCS

Engine: LDW 502 Drawing: C

CRANKSHAFT/FLYWHEEL

POS.	CODE	DESCRIPTION	Qty
1	2280.119	key	1
3	9080.132	plug diam. 6	2
4	1050.952	CRANKSHAFT citycar	1
4	1050.954	CRANKSHAFT	1
5	2816.088	crown gear \varnothing 238 z=94	1
6	9880.881	FLYWHEEL with CROWN	1
6	9880.950	FLYWHEEL with crown (Valeo 180DBR)	1
6	9881.213	FLYWHEEL with crown gear	1
6	9881.615	FLYWHEEL with crown z = 94 (Kg 7,4)	1
6a	9881.214	FLYWHEEL with crown gear and alternator rotor	1
7	1780.097	bolt M 10 X 30	5
8	9865.319	screw M 16 X 1,5 left rotation	1
9	«-----»	lockpin	0
10	2280.149	key (mm 8)	1
11	8430.004	tapper pin	1
16	2002.020	rotor 12 V 30 A	1

C FOCs
SUPERFOCS



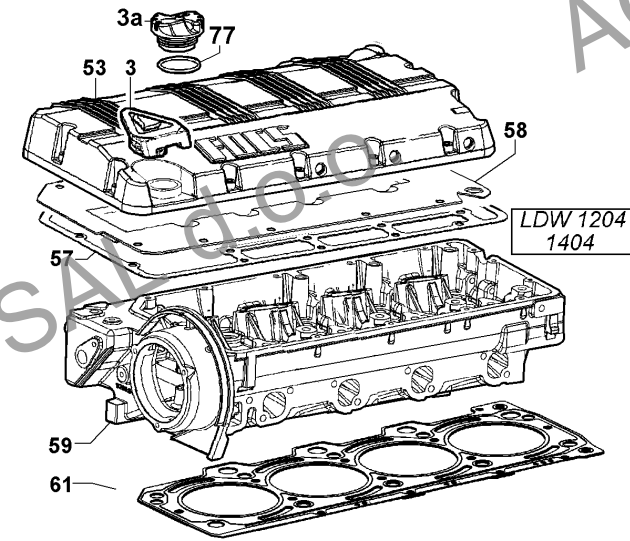
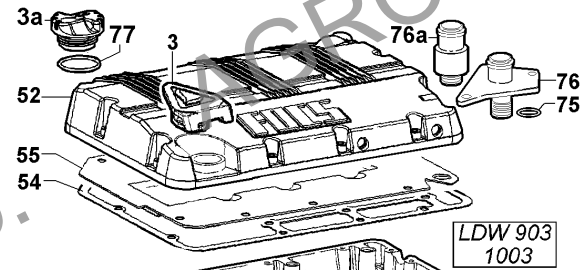
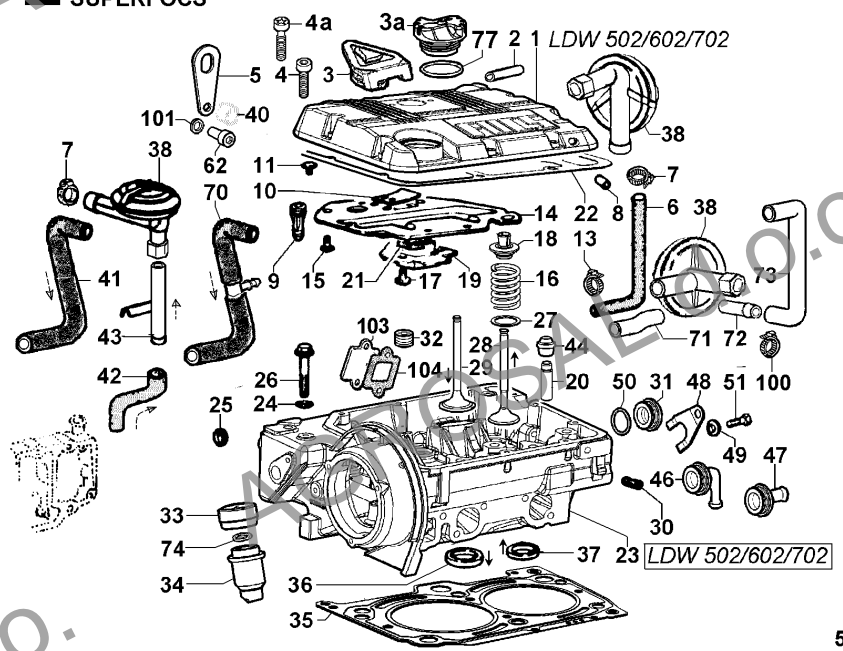
**LOMBARDINI**

A KOHLER COMPANY

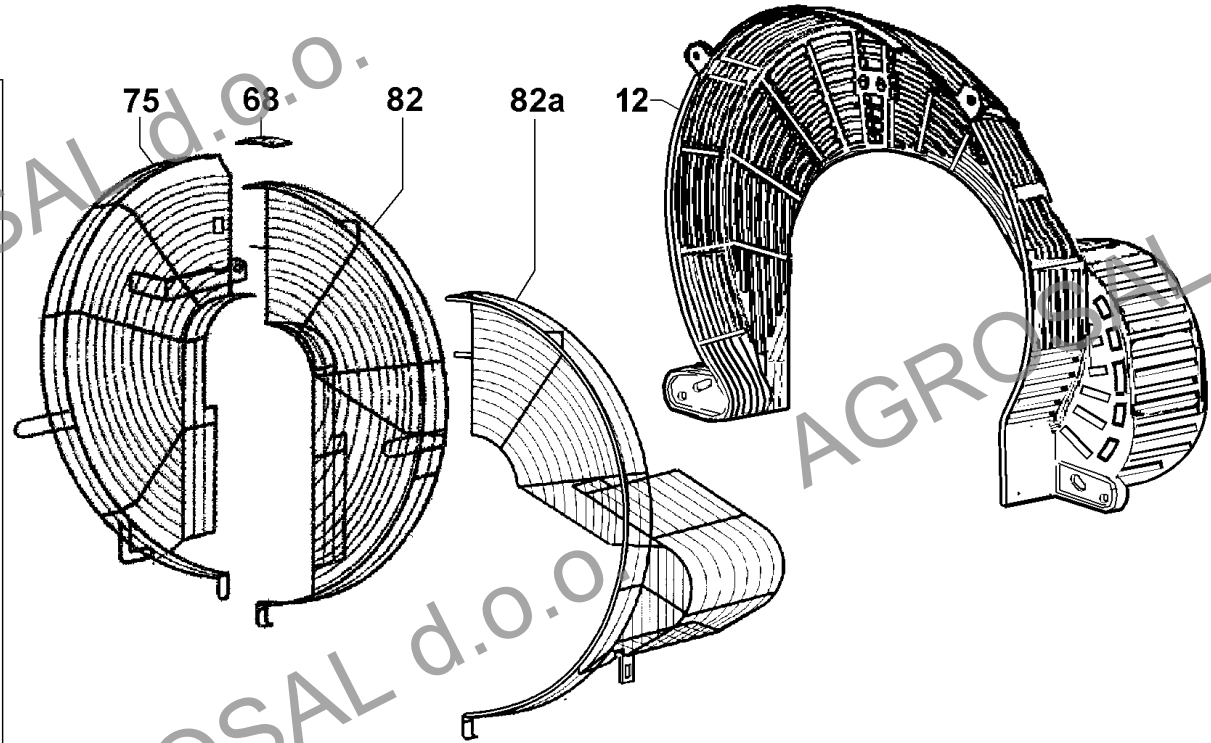
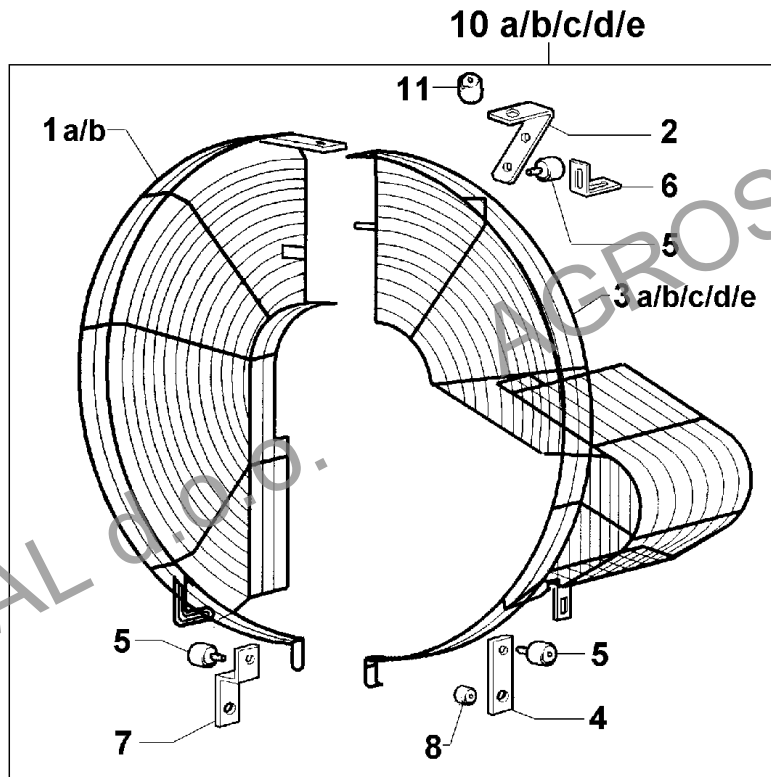
Group: FOCS-SUPERFOCS
Engine: LDW 502 Drawing: L**CYLINDER HEAD/ROCKER ARM BOX**

POS.	CODE	DESCRIPTION	Qty
1	2125.742	rocker arm cover	1
3	<----->	filler oil cap	0
3a	9032.093	filler oil cap	1
4	9730.416	screw M 6 X 20	10
5	8545.939	lifting brace	2
7	8630.147	clamp diam.12-22	4
8	9080.132	plug diam. 6	1
8	9080.133	cap diam. 8	1
15	<----->	see Pos. 1	0
16	5755.005	valve spring	4
17	<----->	see Pos. 14	0
18	6410.017	retainer with half-collets	4
19	<----->	see Pos. 14	0
20	4845.200	valve guide std.	4
20	4845.220	valve guide +0,50	4
21	<----->	see Pos. 14	0
22	4400.103	gasket	1
23	9200.522	CYL.HEAD	1
24	7625.130	washer diam. 10,2	6
25	8990.047	plug diam 18	1
26	9820.206	special screw mm 90+10	6
27	7625.185	washer	4
28	9685.105	exhaust valve	2
29	9652.101	intake valve	2
30	9080.132	plug diam. 6	1
31	9065.007	plug	1
33	4130.096	precombustion chamber locking nut	2
34	6725.029	precombustion chamber	2
35	4730.877	head gasket 1,43 (no small holes)	1
35	4730.878	head gasket 1,53 (1 small hole)	1
35	4730.879	head gasket 1,63 (2 small holes)	1
36	8000.226	inlet v.seat	2
37	8000.227	exhaust v.seat	2
38	9680.034	suction valve	1
40	<----->	see remarks	0
41	5365.076	rubber pipe mm 74	1
41	5365.077	rubber pipe mm 93	1
42	5365.075	union pipe	1
43	9599.165	union pipe	1
44	4535.015	valve retainer	4
46	3866.090	water flange	1
47	3866.089	flange (for hose diam.12)	1
48	5570.019	retainer	1
49	7625.010	washer diam. 8	1
50	1200.081	O ring	1
51	1770.127	bolt M 8 X 14	1
62	1770.002	bolt M 8 X 1,25 X 16	1

FOCS
SUPERFOCS



V FOCS
SUPERFOCS



**FUEL SYSTEM**

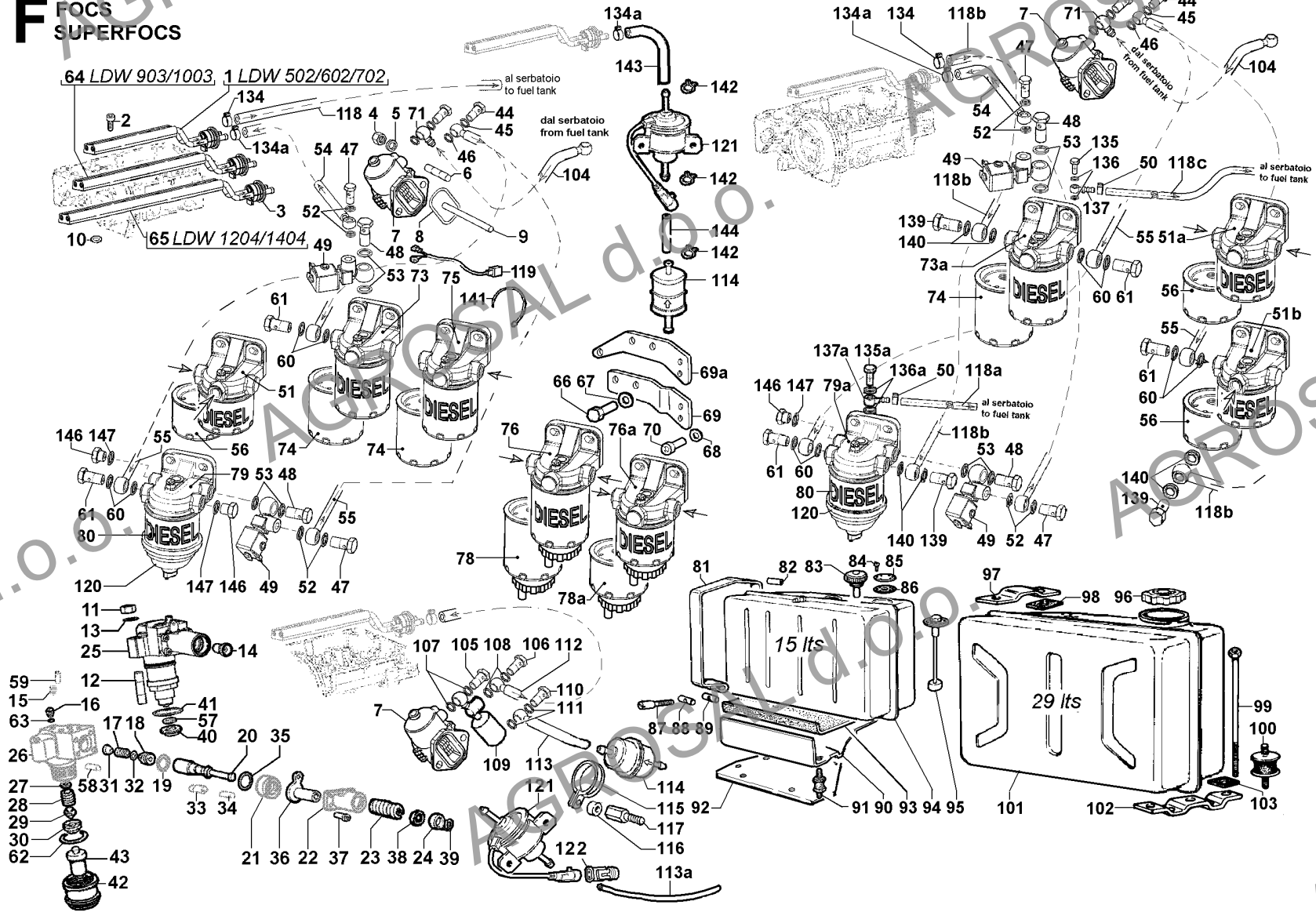
POS.	CODE	DESCRIPTION	Qty
1	9375.993	delivery pipe	1
2	9730.313	fix screw	4
3	4750.014	delivery pipe seal	1
4	3240.164	nut M 8	2
5	7555.029	washer diam. 8	2
6	6780.049	intake stud M 8 X 20 (36)	2
7	6585.097	feed pump	1
8	1200.087	O ring 3150	1
9	7200.168	drive rod	1
10	1200.286	seal ring 9,25X1,78	4
11	3240.164	nut M 8	4
12	6780.135	stud	4
13	7555.029	washer diam. 8	4
14	1410.112	tapped	2
16	9680.037	bleeding valve	2
16	9680.041	bleeding valve	2
17	5801.274	delivery valve spring	2
18	9672.107	delivery valve	2
19	«-----»	seal ring	0
20	6578.211	injection plunger	2
20	6578.227	plunger (citycar version)	2
21	«-----»	locking nut	0
23	5755.113	tappet spring	2
24	«-----»	push rod - see Pos. F 25	0
25	6590.285	nozzle-injection pump	2
25	6590.307	nozzle-injection pump (citycar version)	2
26	«-----»	body	0
27	8335.142	adj.spacer 2,00	2
27	8335.143	adj.spacer 1,90	2
27	8335.144	adj.spacer 1,80	2
27	8335.145	adj.spacer 1,70	2
27	8335.146	adj.spacer 1,60	2
27	8335.147	adj.spacer 1,50	2
27	8335.148	adj.spacer 1,40	2
27	8335.149	adj.spacer 1,30	2
27	8335.150	adj.spacer 1,20	2
27	8335.151	adj.spacer 1,10	2
27	8335.152	adj.spacer 1,00	2
28	«-----»	pressure spring - no longer avail.	0
29	1420.048	drive rod	2
30	3527.220	spacer	2
31	«-----»	filler - no longer available	0
32	4760.015	valve gasket	2
33	«-----»	filler	0
35	1200.277	seal ring 20,35X1,78	2
36	5375.017	governor sleeve	2
37	9730.206	screw TCEI M 4 X 12	8
38	6410.096	lower ret.	2
39	«-----»	circlip diam. 19 - see Pos. F 25	0
40	5989.007	spark arrestor	2
41	1200.213	O ring 26,70X1,78	2
42	«-----»	locking nut	0
43	6531.436	nozzle	2

Group: FOCS-SUPERFOCS
Engine: LDW 502 Drawing: F

FUEL SYSTEM

POS.	CODE	DESCRIPTION	Qty
44	1901.030	union bolt M 10	2
45	4670.059	copper gasket diam.10	2
47	1901.030	union bolt M 10	1
48	1570.045	filler cap M 14	1
49	3587.119	electro-valve	1
51	3730.073	FUEL FILTER	1
52	4670.059	copper gasket diam.10	2
53	4670.061	copper gasket diam.14	2
54	9375.857	del.pipe mm 680	1
54	9375.859	del.pipe mm 1000	1
54	9375.868	del.pipe mm 500	1
55	9375.853	fuel pipe mm 1000	1
56	2175.256	fuel filter cartridge	1
57	4670.082	copper gasket diam.14 X 1	2
58	«-----»	lockpin	0
60	4670.061	copper gasket diam.14	2
61	1901.032	union bolt M 14	1
62	1200.287	O ring 25,12X1,78	2
63	4760.038	gasket	2
81	3616.082	fuel tank strap	2
82	9600.057	rubber spacer	4
83	9043.025	fuel tank cap	1
84	9761.001	screw M 4 X 0,7 X 12	6
85	5055.023	plate	1
86	4776.040	gasket	1
87	9730.139	screw M 6 X 60	2
88	1557.019	drilled block	2
89	1557.020	threaded block	2
90	8042.024	fuel tank saddle	1
91	8636.001	vibration-damping	4
92	6370.515	tank plate	1
93	8315.016	rubber shim	1
94	8103.021	fuel tank 15 liters	1
95	4906.008	fuel gauge (mm 193) 15/29 lt	1
134	3630.050	clamp dia 9-11	1
134a	3630.217	clamp dia 11,5-13,5	1

F FQCS
SUPERFOCS





LOMBARDINI

A KOHLER COMPANY

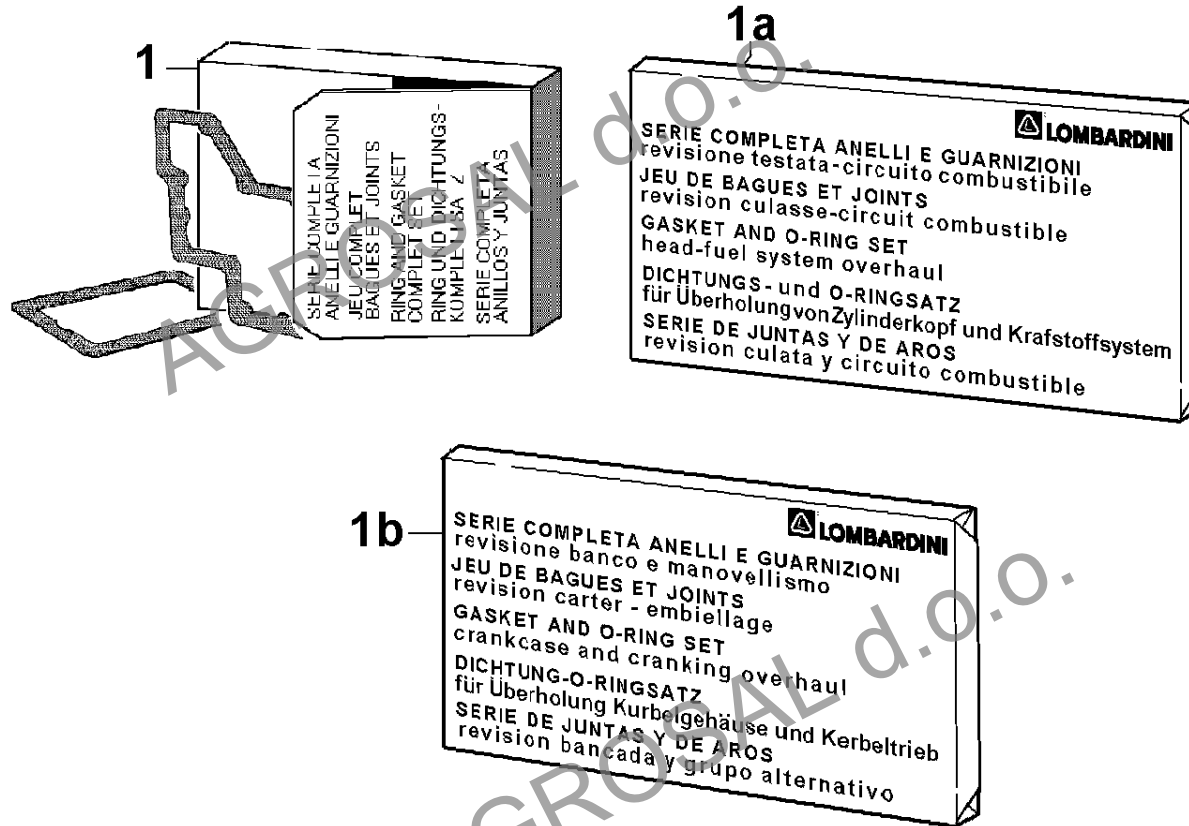
Group: FOCS-SUPERFOCS

Engine: LDW 502 Drawing: N

GASKET SET

POS.	CODE	DESCRIPTION	Qty
1	«-----»	RING AND GASKET COMPLETE SET (without Pos. L 35) - see Pos. N 1	0
1a	8205.106	RING AND GASKET COMPLETE SET - head and fuel system overhaul (w	1
1b	8205.107	RING AND GASKET COMPLETE SET - crankcase and cranking overhaul	1

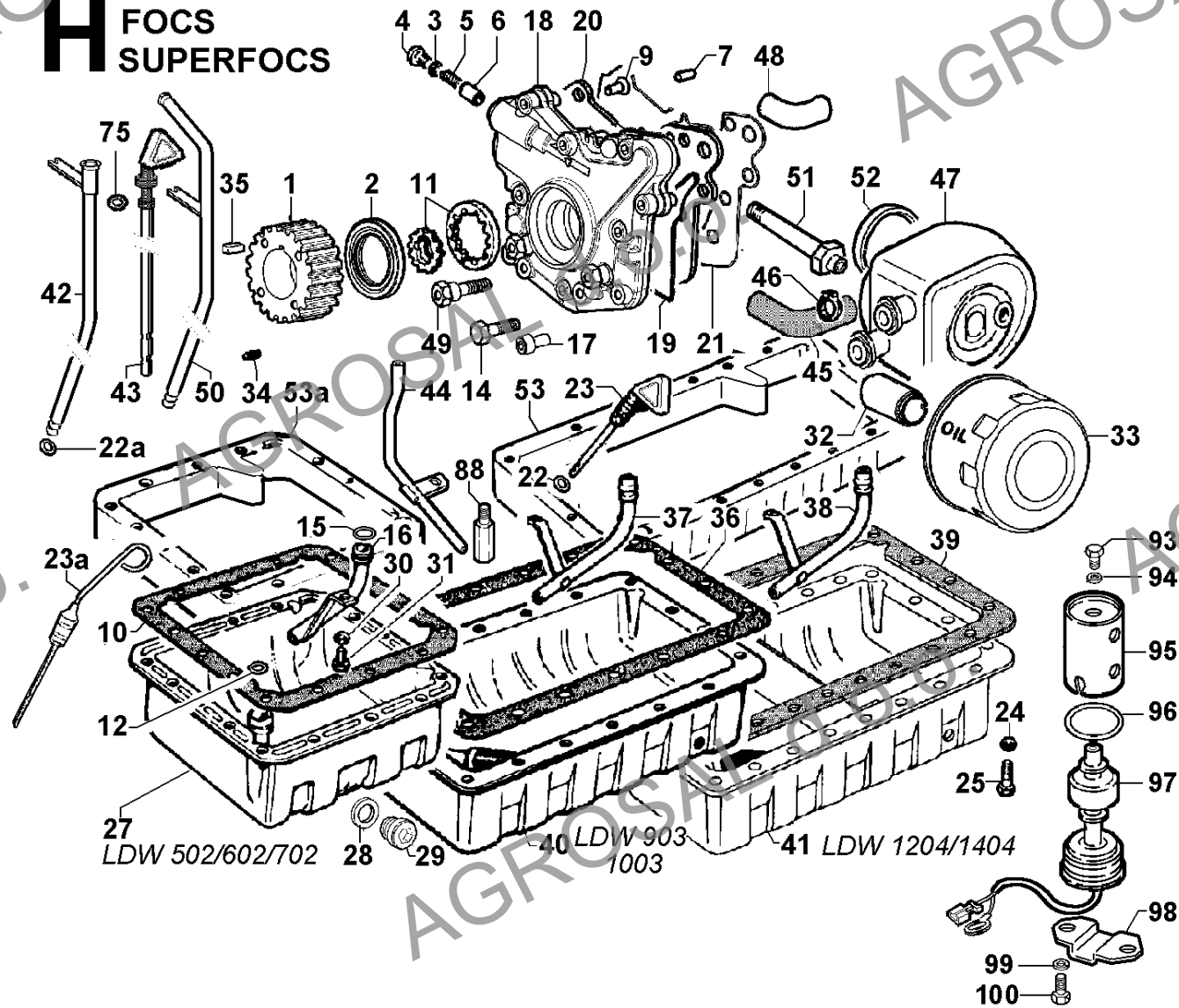
N FOCS
SUPERFOCS



**LUBRICATING SYSTEM**

POS.	CODE	DESCRIPTION	Qty
1	6975.292	driving pulley	1
2	1213.343	seal ring 32X50X6	1
3	4670.060	copper gasket diam.12	1
4	9015.005	plug	1
5	5625.008	pressure valve spring	1
6	6495.045	drive rod	1
7	«-----»	see remarks	0
9	9800.061	screw M 6 X 16	3
10	4431.130	gasket	1
11	7750.105	oil pump rotors	1
12	1200.030	rubber oil seal	1
14	9732.064	screw M 8 X 30	1
15	1200.274	oil seal diam. 8,00	1
16	9485.186	scavenge oil pipe	1
17	9732.074	screw M 8 X 20	6
18	6605.096	OIL PUMP	1
19	1200.292	O ring	1
20	«-----»	see Pos. 18	0
21	4580.216	gasket	1
22	1200.266	rubber oil seal	2
23	«-----»	dipstick (mm 67)	0
24	7500.018	washer	14
25	1760.130	bolt M 6 X 1 X 12	14
27	6645.572	oil pan (l 1,7)	1
28	4670.088	copper gasket 18X24X1	2
29	9040.024	plug M 18 h = 22	2
30	7625.008	washer diam. 6,4	1
31	1760.130	bolt M 6 X 1 X 12	1
32	7265.021	oil filter connector	1
33	2175.107	oil filter cartridge (mm 59)	1
34	«-----»	lockpin	0
42	9330.070	dipstick guard	1
42	9330.071	dipstick guard	1
43	1400.267	dipstick on cyl.head mm 379 (with alternator into flywheel)	1
44	9485.213	scavenge oil pipe	1
49	9865.174	screw	2

H FOCS SUPERFOCS





LOMBARDINI

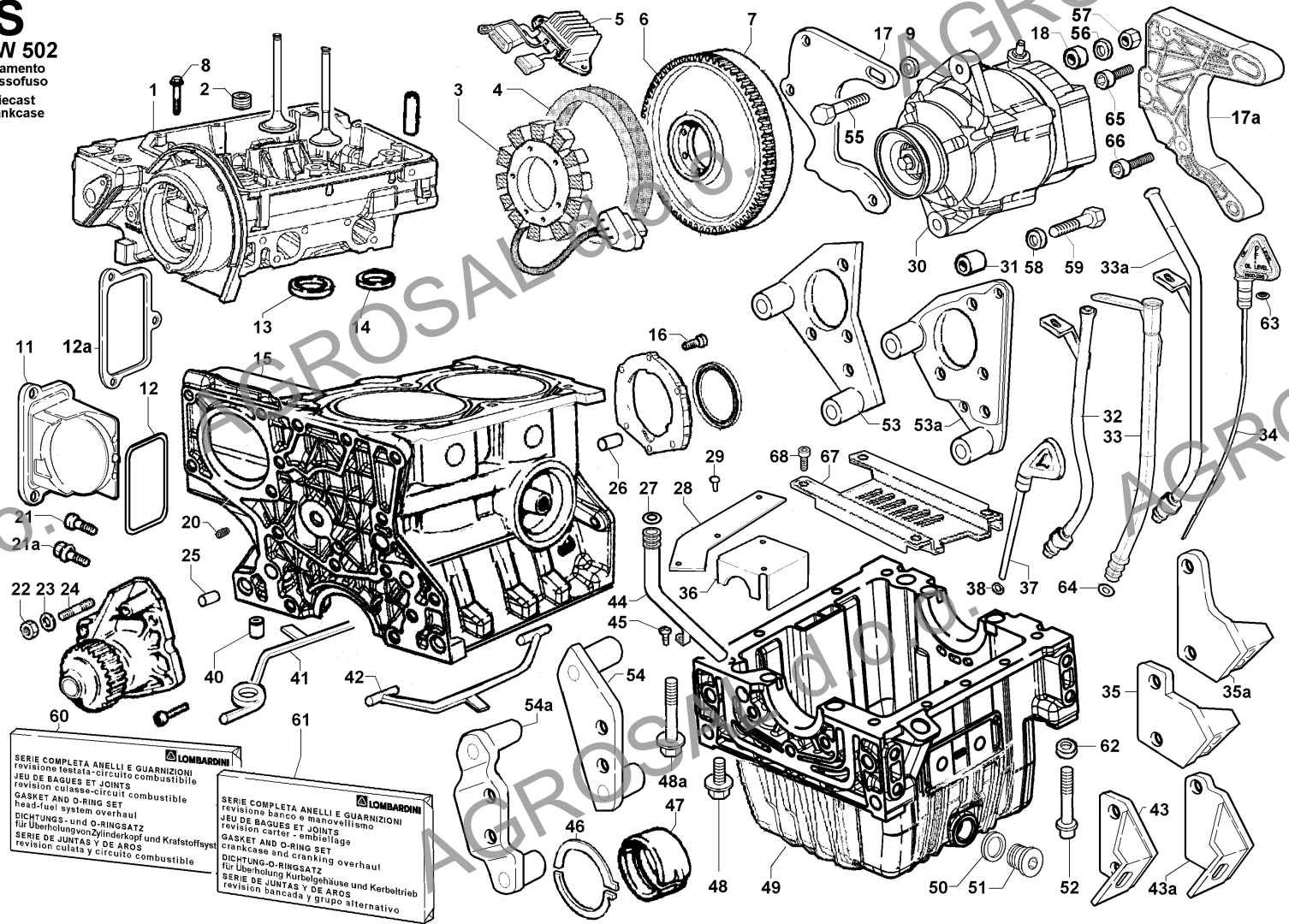
A KOHLER COMPANY

Group: FOCS-SUPERFOCS
Engine: LDW 502 Drawing: S

SPECIFIC PARTS FOR DIE-CAST LDW 502

POS.	CODE	DESCRIPTION	Qty
0	«-----»	To consult these parts see Table S of LDW 502 Citycar P/F engine	0

S
LDW 502
 basamento
 pressofuso
 diecast
 crankcase



LOMBARDINI
 SERIE COMPLETA ANELLI E GUARNIZIONI
 revisione testata-circuito combustibile
 JEU DE BAGUES ET JOINTS
 revision culasse-circuit combustible
 GASKET AND O-RING SET
 head-fuel system overhaul
 DICHTUNGS- und O-RINGSATZ
 für Überholung von Zylinderkopf und Kraftstoffsystem
 SERIE DE JUNTAS Y DE AROS
 revision culata y circuito combustible

LOMBARDINI
 SERIE COMPLETA ANELLI E GUARNIZIONI
 revisione banco e manovellismo
 JEU DE BAGUES ET JOINTS
 revision carter - embiellage
 GASKET AND O-RING SET
 crankcase and cranking overhaul
 DICHTUNG-O-RINGSATZ
 für Überholung Kurbelgehäuse und Kerbeltrieb
 SERIE DE JUNTAS Y DE AROS
 revision bancada y grupo alternativo



LOMBARDINI

A KOHLER COMPANY

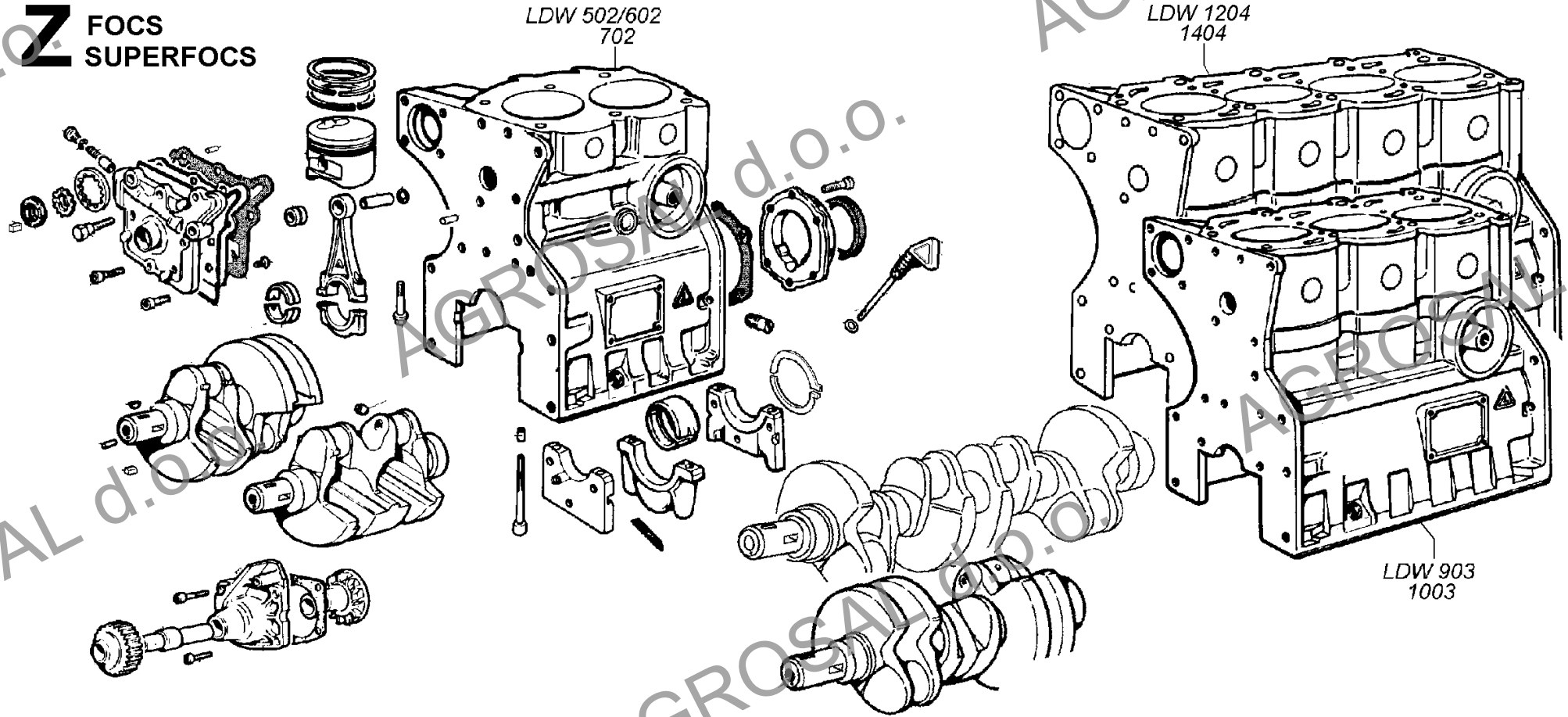
Group: FOCS-SUPERFOCS

Engine: LDW 502 Drawing: Z

SHORT BLOCK

POS.	CODE	DESCRIPTION	Qty
1	1560.262	short block (aluminium)	1

Z FOCS
SUPERFOCS



**LOMBARDINI**

A KOHLER COMPANY

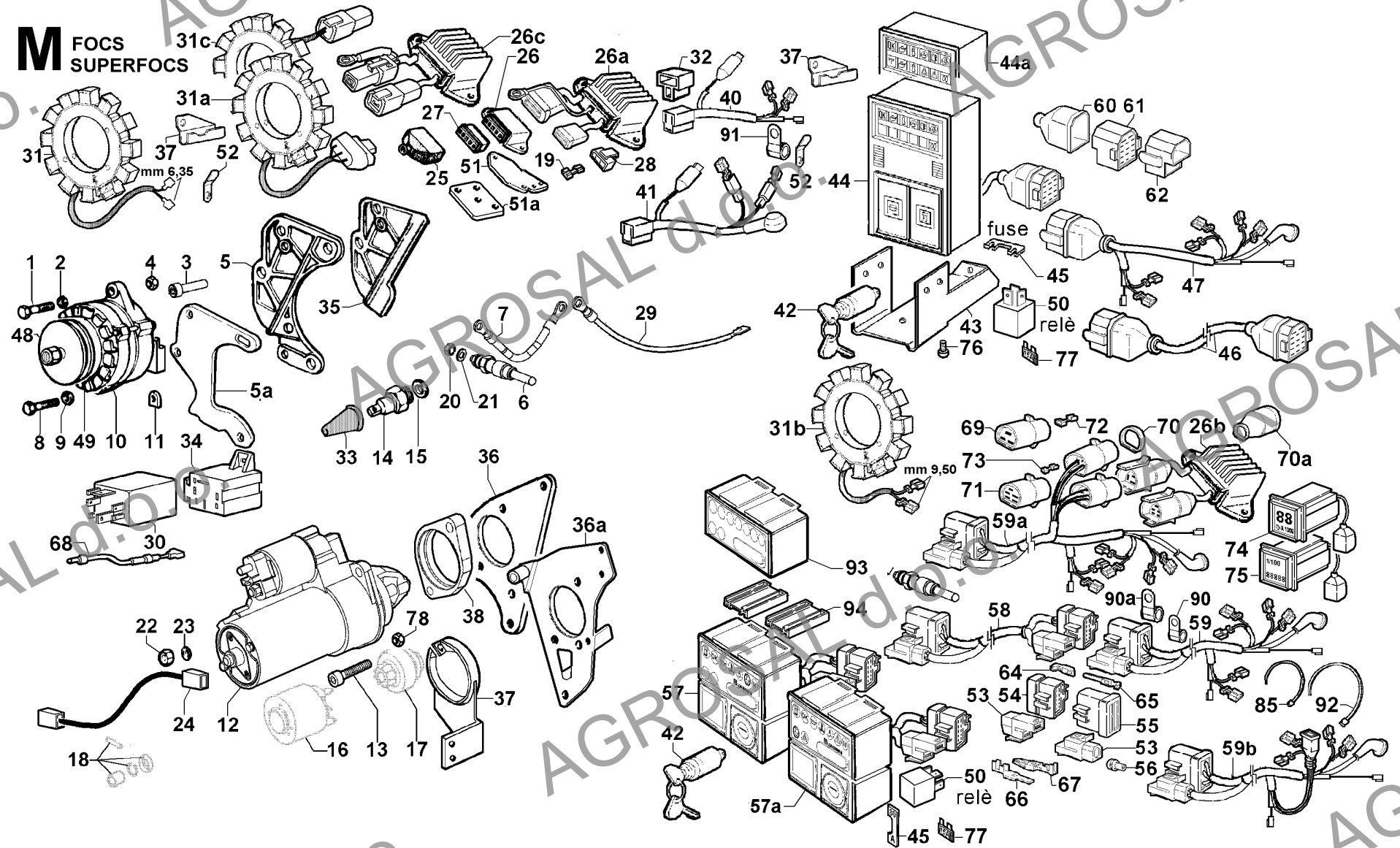
Group: FOCS-SUPERFOCS

Engine: LDW 502 Drawing: M

STARTING

POS.	CODE	DESCRIPTION	Qty
6	2100.109	preheating glow plug 12 V	2
7	2185.548	glow plug wire	1
12	5840.194	starting motor 12 V 1,1 KW	1
13	9730.045	screw M 10 X 30	2
14	6745.050	oil switch 0,3 bar (M 12)	1
14	6745.056	oil switch 1,4 bar (white mark)	1
15	4670.060	copper gasket diam.12	1
16	<----->	relay	0
20	3240.004	nut M 5	2
21	7626.066	washer	2
22	3240.004	nut M 5	1
22	3240.020	nut M 8	1
23	7565.003	washer diam. 5	1
23	7565.007	washer diam. 8	1
24	<----->	starting motor wire - no longer avail.	0
26	7362.228	voltage regulator. 12V 14/26A-6 contacts for alternator 3 wires	1
26	7362.298	voltage regul.12 V max 30 A - 5 contacts for alt.2 wires	1
27	<----->	inlet	0
29	2185.867	glow plug wire	1
30	2193.204	contr boX 12V	1
31	8565.079	stator for alternator 3 wires 12V 20A (for ceramic rotor)	1
31	8565.083	stator for alternator 2 wires 12V 30A (for ceramic rotor)	1
32	1557.103	wire connection	1
33	6491.013	pipe elbow	1
34	5830.161	connection boX	1
37	5168.079	sensor plate	1
40	2185.905	wire for voltage regulator	1
41	2186.143	wire with diode 12V	1
42	5041.274	key switch	1
43	8545.507	bracket	1
45	4062.231	fuse 30 A	1
46	<----->	wire	0
50	7369.202	preheating plug control boX	1
52	6275.154	plate	1
53	1557.122	connection 2 ways	2
54	1557.119	connection 14 male contacts	1
55	1557.118	connection 14 female contacts	1
56	4775.540	guard	2
57	7245.432	EL.PANEL ASS.Y 7 lights (12V)	1
57	7245.452	el.panel 7 lights (12V)	1
58	2185.962	wire eXtension mm 2000	1
58	2186.105	wire eXtension mm 1000	1
59	2186.107	wire for dashboard	1
60	2145.060	guard	1
61	1557.100	connecting holder	1
62	1557.101	connecting holder	1
64	9180.188	faston female 4,25	12
65	9180.187	faston male 2,76	12
66	9180.189	faston male 9,5	2
67	9180.190	faston female 8,5	2

M FOCS
SUPERFOCS



**TIMING/SPEED GOVERNOR**

POS.	CODE	DESCRIPTION	Qty
1	1541.193	rocker arm (inlet/eXhaust)	2
1	6045.110	ROCKER ARM ASS.Y	1
2	9850.088	adj screw	4
3	3240.008	nut M 6	4
4	9850.110	adj.screw	2
5	3240.151	nut	2
6	1541.220	inj.pump rocker arm	2
7	8615.105	rock.arm shaft support	3
8	7625.130	washer diam. 10,2	3
9	3240.033	nut M 10	3
10	6800.088	stud M 10 X 45	3
11	6045.085	rocker arm shaft	1
12	8430.061	lockpin 4 X 14	1
13	9000.148	plug diam.11	2
15	1011.501	camshaft for die-cast crankcase	1
15	1011.515	camshaft for cast-iron crankcase	1
16	1541.193	rocker arm (inlet/eXhaust)	2
17	1970.140	sleeve	1
17	1970.450	sleeve for engine with hydr.pump fitting on 3rd PTO	1
18	3580.018	cam std.	1
19	9730.294	screw	1
20	1200.233	O ring 40,95 X 2,62	1
21	3800.026	flange	1
22	9730.416	screw M 6 X 20	3
23	7090.012	contr.gear pulley	1
24	2440.343	timing belt z=108	1
25	1213.303	seal ring 35X52X7	1
26	9730.010	screw M 6 X 16	3
27	2690.294	GOVERNOR COVER	1
28	1202.037	rubber oil seal	1
29	3001.066	ball bearing	1
30	6275.166	plate	1
31	9800.061	screw M 6 X 16	3
32	8805.048	weight support	1
33	«-----»	push rod	0
34	5401.232	CONTROL SLEEVE	1
35	1585.085	sleeve	1
36	3110.165	thrust roller	1
37	7352.063	thrust washer	1
38	9820.142	screw	1
39	7625.045	washer diam.11	1
41	3240.033	nut M 10	1
42	7495.010	washer	1
43	6800.090	stud	1
44	4110.009	jockey pulley	1
49	8430.105	taper pin 8X16	1

D FOCS
SUPERFOCS

