

AGROSAL d.o.o.



Piaggio FOCS 1204

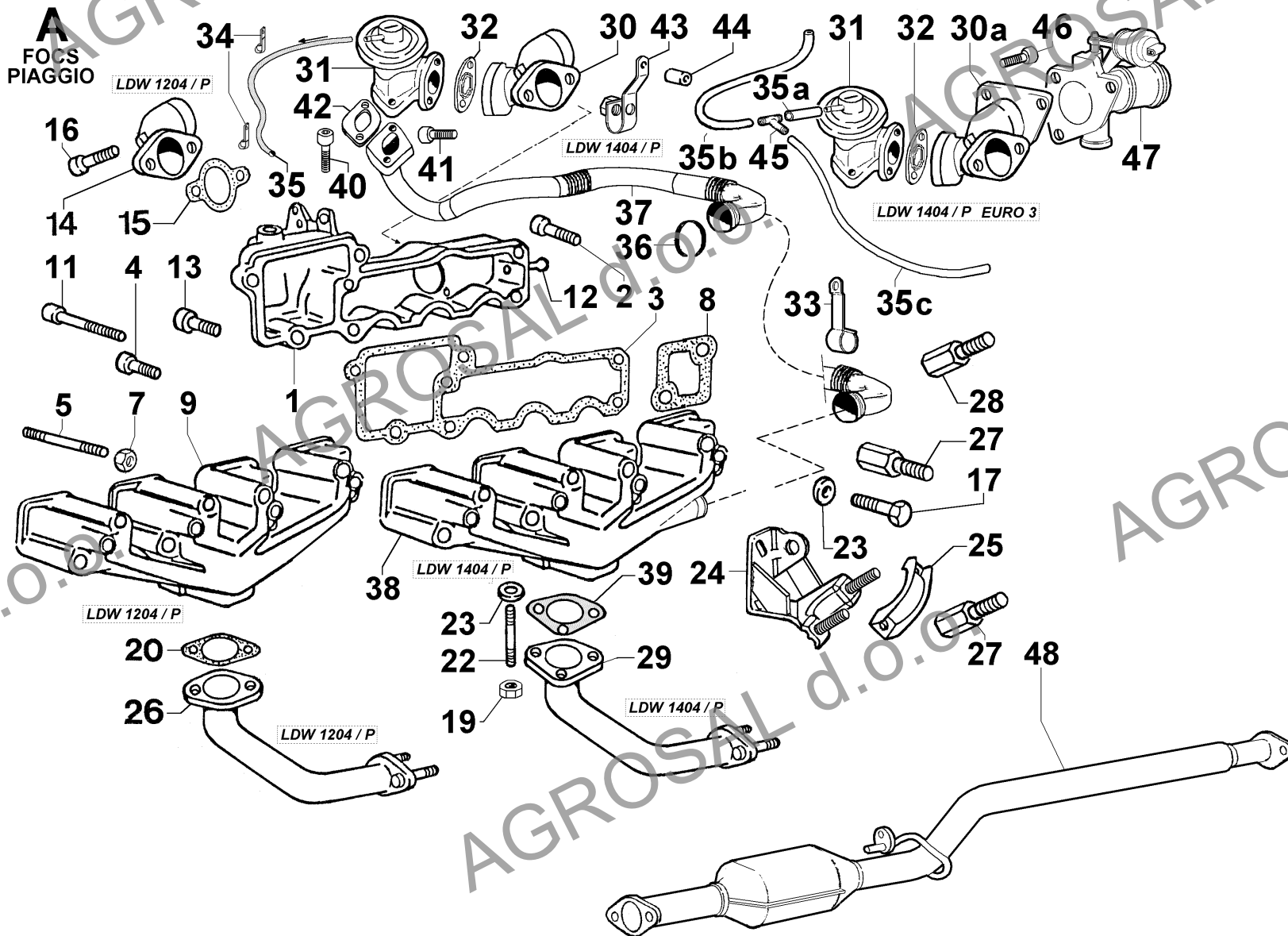


AGROSAL d.o.o.

Gregorčičeva ulica 38, 5270 Ajdovščina
telefon: 05 368 90 96, fax: 05 368 90 97
e-mail: info@agrosal.si, www.agrosal.si

**INTAKE AND EXHAUST**

POS.	CODE	DESCRIPTION	Qty
1	2486.257	inlet manifold	1
2	9730.032	screw M 8 X 45	5
3	4420.082	inl manifold gasket	1
4	9732.064	screw M 8 X 30	4
5	6780.028	stud M 8 X 55 (67)	8
7	3240.163	nut M 8	8
8	4420.070	eXh.manifold gasket	4
9	2486.219	eXhaust manifold	1
11	9730.035	screw M 8 X 65	1
12	9599.157	pipe	1
13	9732.063	screw M 8 X 35	1
14	3866.112	inlet flange	1
15	4501.081	gasket	1
16	9732.074	screw M 8 X 20	2
17	1770.056	bolt M 8 X 1,25 X 18	2
19	3240.165	nut M 8	2
20	4501.118	gasket	1
22	6780.171	stud M 8 X 22	2
23	7565.007	washer diam. 8	4
24	<----->	bracket - supplied by Piaggio	0
27	2501.136	hollowstud	4
28	<----->	hollowstud	0





LOMBARDINI

A KOHLER COMPANY

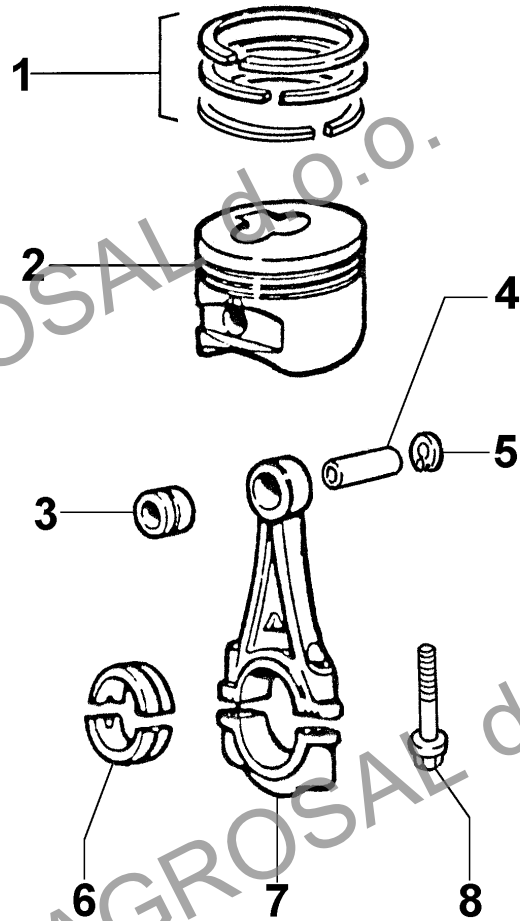
Group: Piaggio FOCS

Engine: LDW 1204/P Drawing: B

CONNECTING ROD/PISTON SET

POS.	CODE	DESCRIPTION	Qty
1	8211.141	ring set std.	4
1	8211.142	ring set +0,50	4
1	8211.143	ring set +1,00	4
2	6500.995	PISTON SET std	4
2	6500.996	PISTON SET +0,50	4
2	6500.997	PISTON SET +1,00	4
3	1630.035	small end bushing	4
4	8480.087	gudgeon pin (diam.18)	4
5	1261.091	snap ring	8
6	1640.116	big end bushing std.	4
6	1640.117	big end bushing -0,25	4
6	1640.118	big end bushing -0,50	4
7	1526.105	CONNECTING ROD	4
8	1770.101	bolt M 8 X 1 X 42	8

B
FOCS
PIAGGIO



**LOMBARDINI**

A KOHLER COMPANY

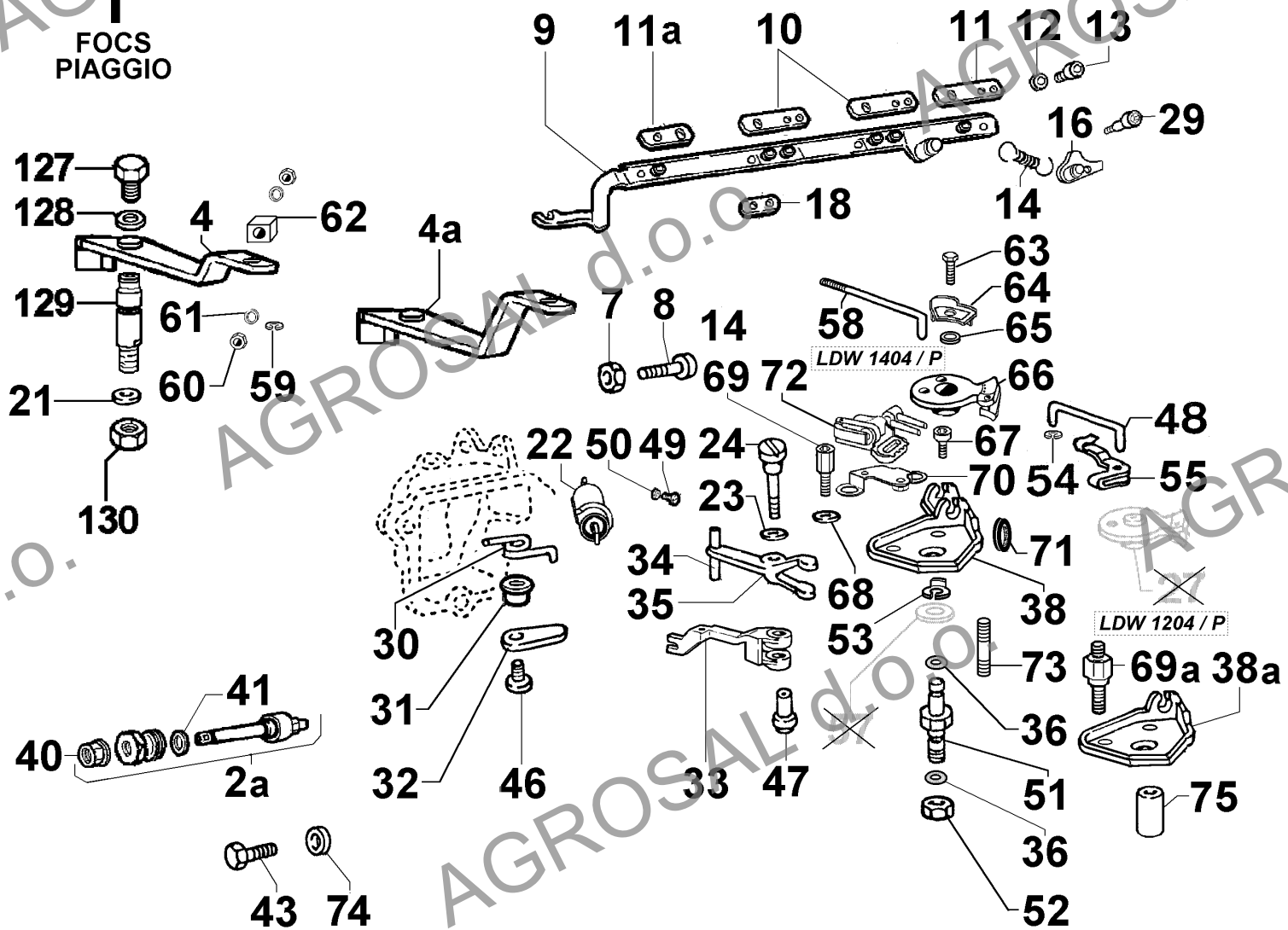
Group: Piaggio FOCS

Engine: LDW 1204/P Drawing: I

CONTROLS

POS.	CODE	DESCRIPTION	Qty
2	8576.115	eXt.f.device 4300 R.P.M. EURO 3	1
4	5271.266	eXternal lever	1
7	3240.008	nut M 6	2
8	1760.023	adjusting bolt M 6X30	2
9	1380.102	INJECTION PUMP RACK	1
10	6320.073	plate	2
11	«-----»	plate	0
12	7626.037	washer	6
13	9732.096	screw M 3 X 6	6
14	5655.251	eXtra-fuel spring 4300-4500	1
16	6370.331	locking plate	1
18	«-----»	see Pos. 9	0
21	1200.052	O ring	1
22	4896.340	device 4500 R.P.M.-brown	1
23	1200.037	rubber oil seal	1
24	6110.101	control lever pin	1
27	«-----»	see Pos. I 66	0
29	9865.202	screw M 3 X 10	4
30	5660.065	recovery spring	1
31	1957.014	sleeve	1
32	5200.674	internal lever	1
33	5200.892	contr.spring lever	1
34	6140.420	journal	1
35	4896.360	CONTROL LEVER	1
36	1200.051	rubber oil seal	1
38	«-----»	bracket - supplied by Piaggio	0
40	3240.153	nut M 6	1
41	4480.046	gasket 16X20	1
43	1760.001	bolt M 6 X 1 X 10	1
46	1760.081	screw M 6 X 20	1
47	1954.020	sleeve	1
48	9245.168	tie rod	1
49	9800.136	screw M 3 X 14	1
50	3203.076	nut M 3	1
51	6140.484	pin	1
52	3240.164	nut M 8	1
53	1241.056	circlip	1
54	1241.053	circlip	1
55	3675.021	locking	1
57	«-----»	washer	0
59	1241.041	snap ring diam. 3	4
66	«-----»	lever - supplied by Piaggio	0
73	6760.052	stud M 6 X 40	1
74	4670.062	copper gasket diam. 6,2 X 10 X 1,5	1
127	1755.001	bolt M 5 X 0,8 X 8	1
128	7625.285	washer diam. 5,3	1
129	6140.550	lever shaft	1
130	3203.050	selflocking nut M 6	1

FOCS
PIAGGIO



**LOMBARDINI**

A KOHLER COMPANY

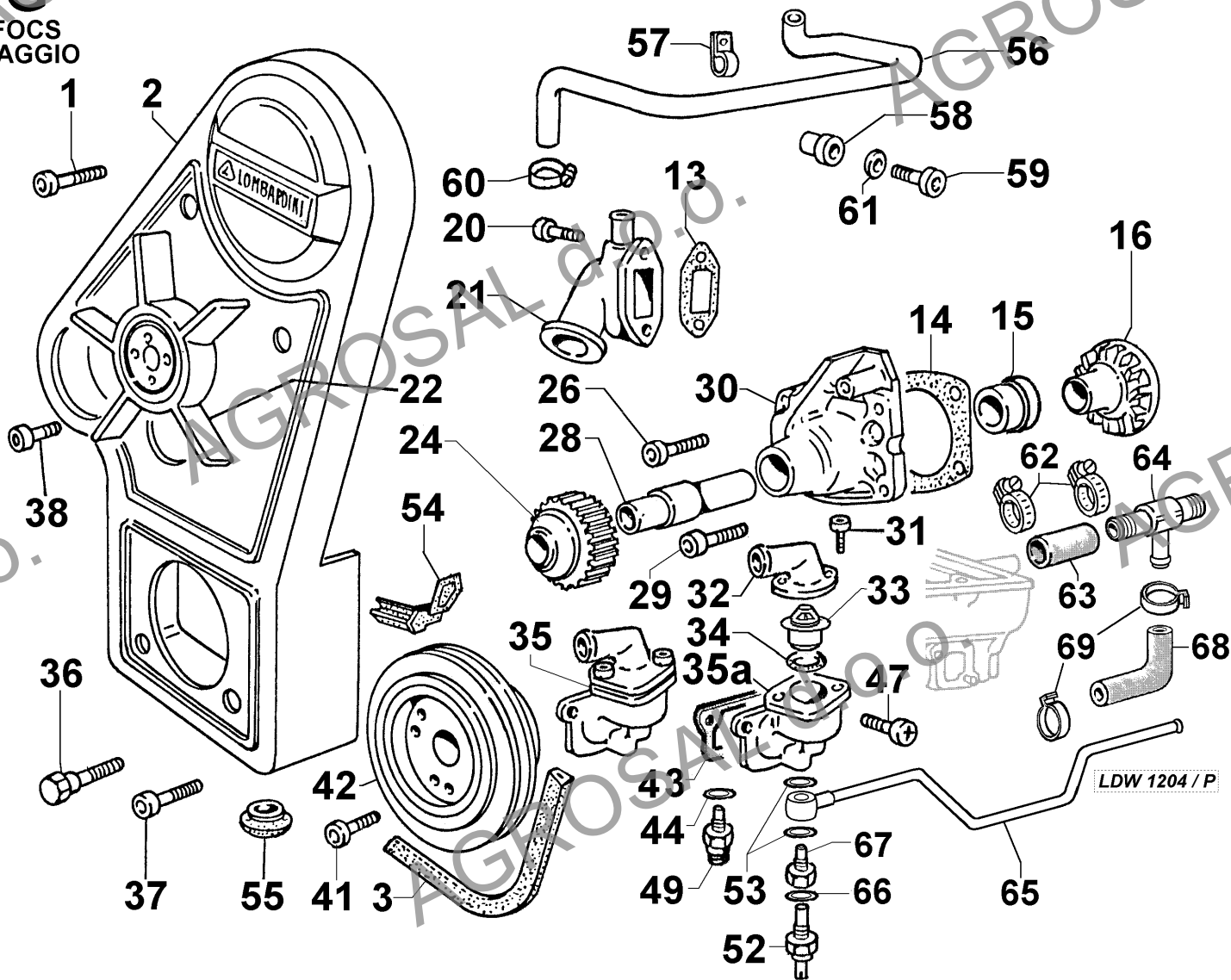
Group: Piaggio FOCS

Engine: LDW 1204/P Drawing: G

COOLING SYSTEM

POS.	CODE	DESCRIPTION	Qty
1	9730.015	screw M 6 X 30	1
2	6927.706	belt guard (1 antidusty ring)	1
3	2400.123	belt mm 765	1
13	4501.158	gasket	1
14	4580.215	pump body gasket	1
15	«-----»	see Pos. 30	0
20	9730.016	screw M 6 X 35	2
21	3866.068	water flange oblique type	1
22	«-----»	blower fan diam. 30 - ordinare a Piaggio	0
26	9732.063	screw M 8 X 35	2
28	«-----»	see Pos. 30	0
29	9732.074	screw M 8 X 20	2
30	6584.439	COOL.PUMP	1
31	9732.074	screw M 8 X 20	2
32	«-----»	see Pos. 35	0
33	9195.124	thermal eXpans.valve	1
34	1200.091	O ring	1
35	«-----»	THERMOSTAT ASS.Y - supplied by Piaggio	0
35a	2871.275	thermostat ass.y body	1
36	9865.174	screw	2
37	9732.016	screw M 6 X 40	3
38	9732.078	screw M 6 X 25	6
41	9732.016	screw M 6 X 40	4
42	«-----»	pulley with damper - supplied by Piaggio	0
43	4460.037	gasket	1
44	4670.019	copper gasket diam.16	1
47	9332.064	screw M 8 X 30	2
49	9195.050	sensor M 14 for electrical thermometer	1
52	9195.094	sensor M 14 (12-24V) for preheating plug control boX	1
53	4670.061	copper gasket diam.14	2
54	4580.168	gasket	1
55	9000.078	plug	1
56	9305.096	hose	1
57	3630.116	clamp	1
58	3527.415	spacer	1
59	9730.020	screw M 6 X 55	1
60	3617.168	clamp	2
61	7625.007	washer diam. 6	1
62	3630.147	clamp diam.12-22	2
63	9305.470	hose	1
64	7295.022	union	1
65	9305.469	pipe	1
66	4670.061	copper gasket diam.14	2
67	2501.144	hollowstud	1
68	9305.471	hose	1
69	3630.008	clamp	2

G
FOCS
PIAGGIO



**LOMBARDINI**

A KOHLER COMPANY

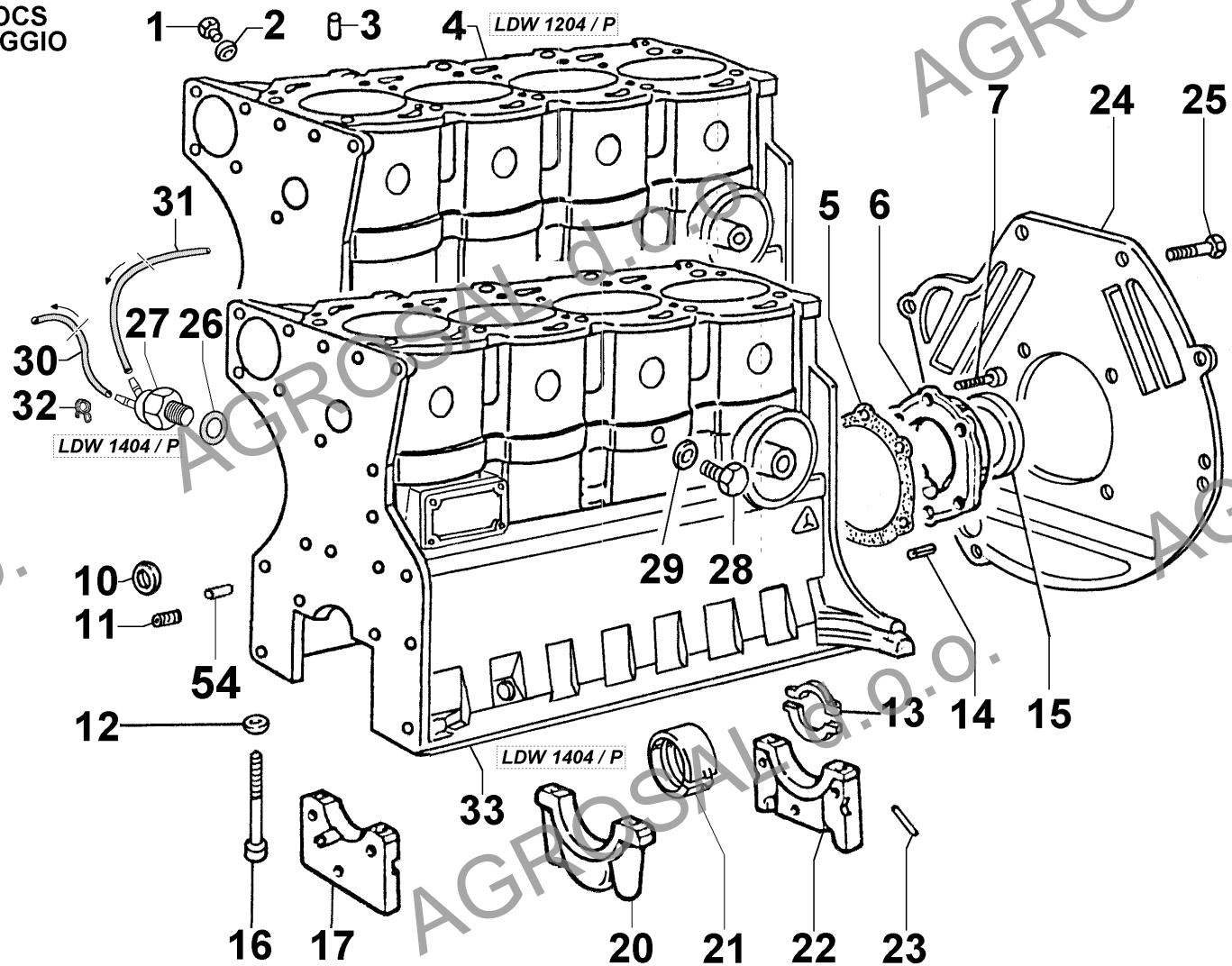
Group: Piaggio FOCS

Engine: LDW 1204/P Drawing: E

CRANKCASE/FLYWHEEL SIDE CRANKSHAFT FLANGE/FLANGING PLATE

POS.	CODE	DESCRIPTION	Qty
1	9027.007	plug	1
2	4670.060	copper gasket diam.12	1
3	1970.140	sleeve	2
4	«-----»	CRANKCASE - supplied by Piaggio	0
5	4501.156	gasket	1
6	3790.078	FLANGE for engine with eXternal altern.or without alternator	1
7	9730.010	screw M 6 X 16	6
10	8990.022	eXpansion plug diam.30	8
11	9080.240	plug M 12	1
11	9765.113	screw M 12	1
12	1970.140	sleeve	10
13	1257.158	thrust washer std	2
13	1257.159	thrust washer +0,10	2
13	1257.160	thrust washer +0,20	2
14	8400.108	lockpin 10 X 20	4
15	1213.347	seal ring 70X88X8	1
16	9820.120	fiX. screw	10
17	«-----»	see Pos. 4	0
21	1611.193	supp.bearing std.	5
21	1611.194	supp.bearing -0,25	5
21	1611.195	supp.bearing -0,50	5
22	«-----»	see Pos. 4	0
23	4400.054	gasket	4
24	«-----»	starting motor support - supplied by Piaggio	0
25	1770.042	bolt M 8 X 1,25 X 10	4
54	8430.105	taper pin 8X16	1

E
FOCS
PIAGGIO



**LOMBARDINI**

A KOHLER COMPANY

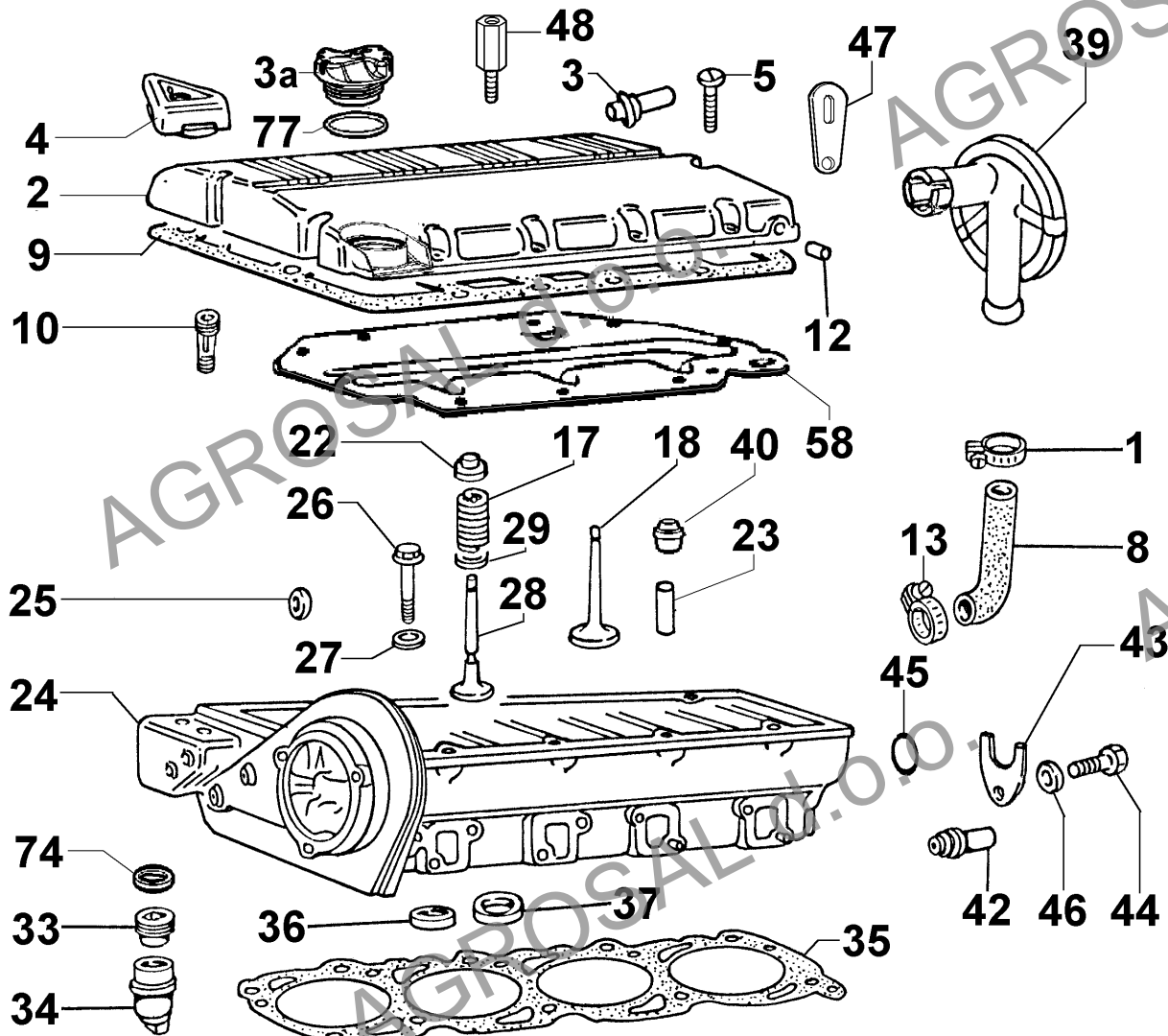
Group: Piaggio FOCS

Engine: LDW 1204/P Drawing: L

CYLINDER HEAD/VALVES

POS.	CODE	DESCRIPTION	Qty
1	3630.147	clamp diam.12-22	1
2	2125.748	ROCKER ARM COVER	1
3	9580.065	tube	1
3a	9032.093	filler oil cap	1
4	«-----»	filler oil cap	0
5	9730.012	screw M 6 X 20	12
8	9400.127	drain pipe	1
9	4400.101	gasket	1
10	5365.122	connection	1
12	9080.133	plug diam. 8	1
13	3630.147	clamp diam.12-22	1
17	5755.137	valve spring	8
18	9652.101	intake valve	4
22	6410.017	retainer with half-collets	8
23	4845.200	valve guide std.	8
23	4845.220	valve guide +0,50	8
24	«-----»	CYLINDER HEAD - supplied by Piaggio	0
25	8990.047	plug diam.18	6
26	9820.222	special screw mm 90+10	10
27	7625.130	washer diam. 10,2	10
28	9685.105	eXhaust valve	4
29	7625.185	washer	8
33	4130.096	precombustion chamber locking nut	4
34	6725.103	precombustion chamber	4
35	4730.683	head gasket 1,45 (no small holes)	1
35	4730.684	head gasket 1,55 (1 small hole)	1
35	4730.685	head gasket 1,65 (2 small holes)	1
36	8000.121	inlet v.seat	4
37	8000.122	eXhaust v.seat	4
39	9680.034	suction valve	1
40	4535.015	valve retainer	8
42	3866.106	flange (for hose diam.16)	1
43	5570.019	retainer	1
44	1770.127	bolt M 8 X 14	1
45	1200.081	O ring	1
46	7625.010	washer diam. 8	1
47	8545.939	lifting brace	2
48	2501.201	hollowstud	2
74	3527.517	spacer to restore the correct projection in the pre-chamber	4
77	1200.082	O ring 3106	1

AGROSAL d.o.o.
FOCS
PIAGGIO



**LOMBARDINI**

A KOHLER COMPANY

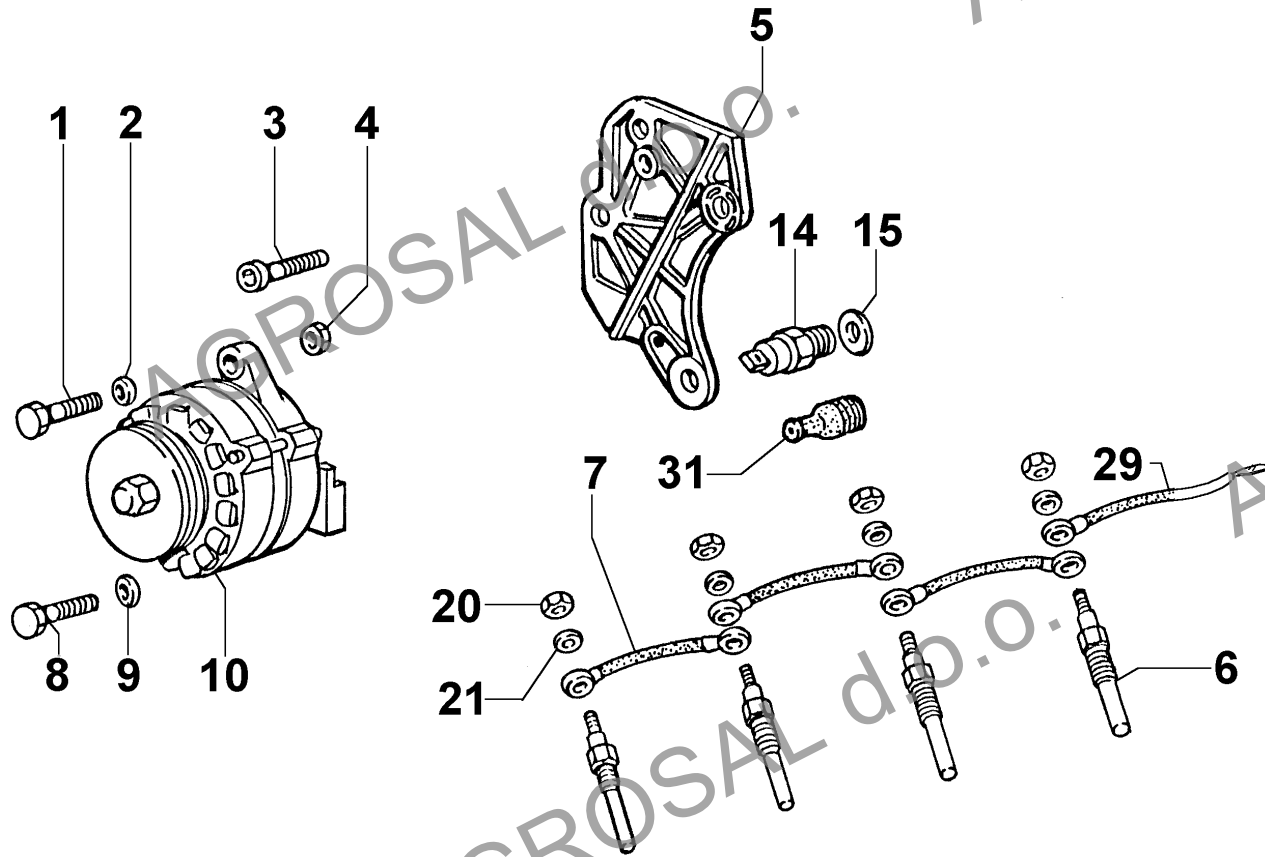
Group: Piaggio FOCS

Engine: LDW 1204/P Drawing: M

ELECTRICAL STARTING/ELECTRICAL SYSTEM

POS.	CODE	DESCRIPTION	Qty
1	1780.015	bolt M 10 X 1,5 X 70	1
2	7625.022	washer diam.10,5 (alt.45/65A)	1
3	9732.064	screw M 8 X 30	3
4	3240.033	nut M 10	1
5	8725.094	alternator support 45-65-80 A	1
6	2100.089	preheating glow plug 12 V	4
7	2185.548	glow plug wire	3
8	1780.015	bolt M 10 X 1,5 X 70	1
9	7625.022	washer diam.10,5 (alt.45/65A)	1
10	1157.287	eXternal volt.alternator 12V-65A	1
14	6745.050	oil switch 0,3 bar (M 12)	1
15	4670.060	copper gasket diam.12	1
20	3240.004	nut M 5	4
21	7626.066	washer	4
29	<----->	wiring harness	0
31	6491.013	pipe elbow	1
32	<----->	wire with diode 12V	0

M
FOCS
PIAGGIO



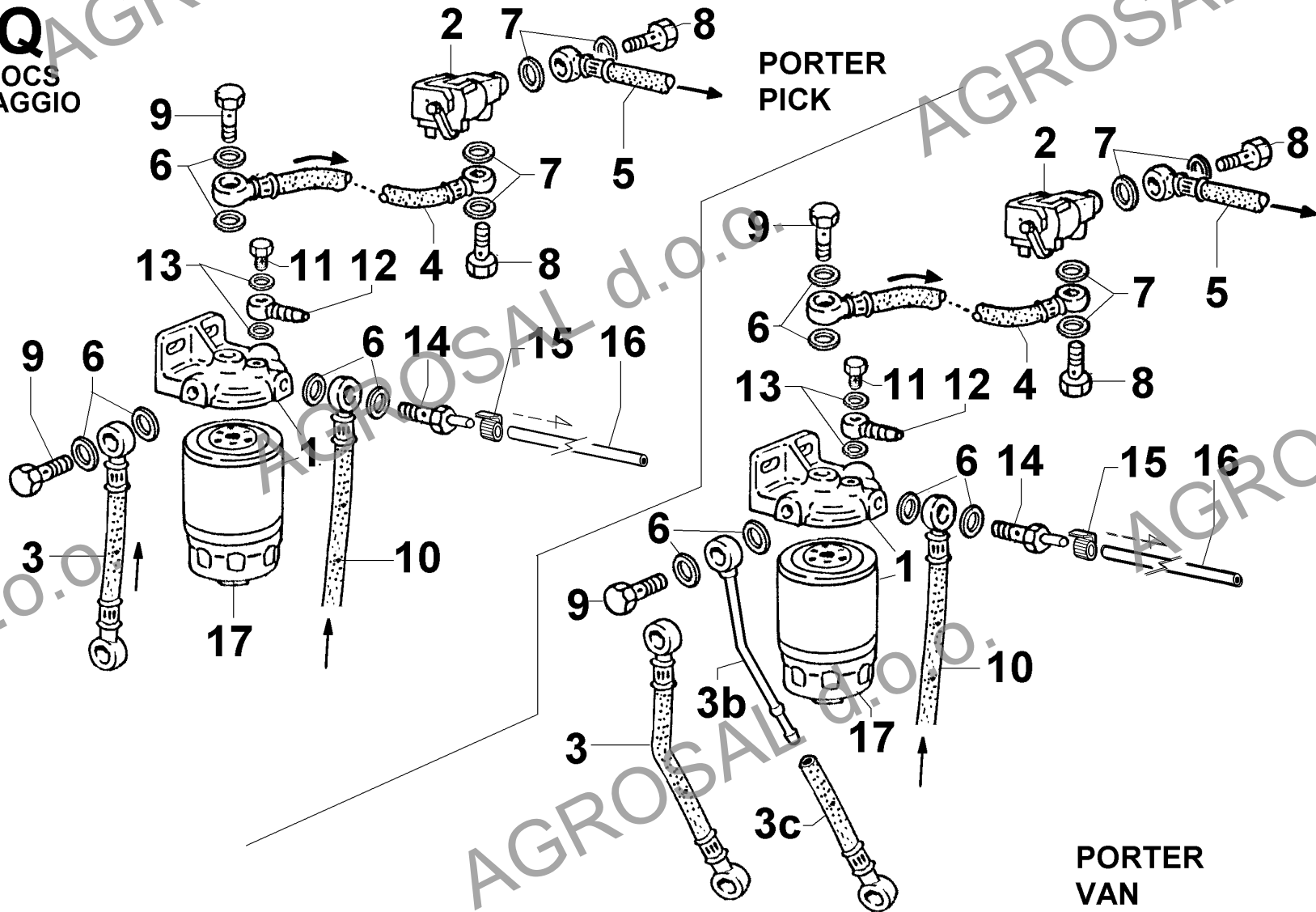
**FUEL FILTER/HOSES/ELECTRO-VALVE**

POS.	CODE	DESCRIPTION	Qty
1	3730.093	FUEL FILTER witht water bleeding	1
2	3587.158	electro-valve	1
3	9375.888	fuel pipe (mm 300)	1
3	9375.917	hose to filter (Pick-up version)	1
4	9375.690	hose mm 220	1
4	9375.917	hose to filter (Pick-up version)	1
5	9375.294	hose to inj.pump (Pick-up version)	1
5	9375.858	hose to inj.pump (Van version)	1
6	4670.061	copper gasket diam.14	6
7	4670.059	copper gasket diam.10	4
8	1901.030	union bolt M 10	2
9	1901.032	union bolt M 14	2
10	9375.913	purge hose (Van version)	1
10	9375.914	purge hose (Pick-up version)	1
11	1901.033	union bolt M 6	1
12	7270.108	banjo union diam. 6	1
13	4670.062	copper gasket diam. 6,2 X 10 X 1,5	2
14	9680.040	no retur-valve	1
15	3630.050	clamp dia 9-11	1
16	9375.915	bleeding pipe (Pick-up version)	1
16	9375.916	bleeding pipe (Van version)	1
17	2175.143	fuel filter cartridge with water bleeding	1

Q
FOCS
PIAGGIO

PORTER
PICK

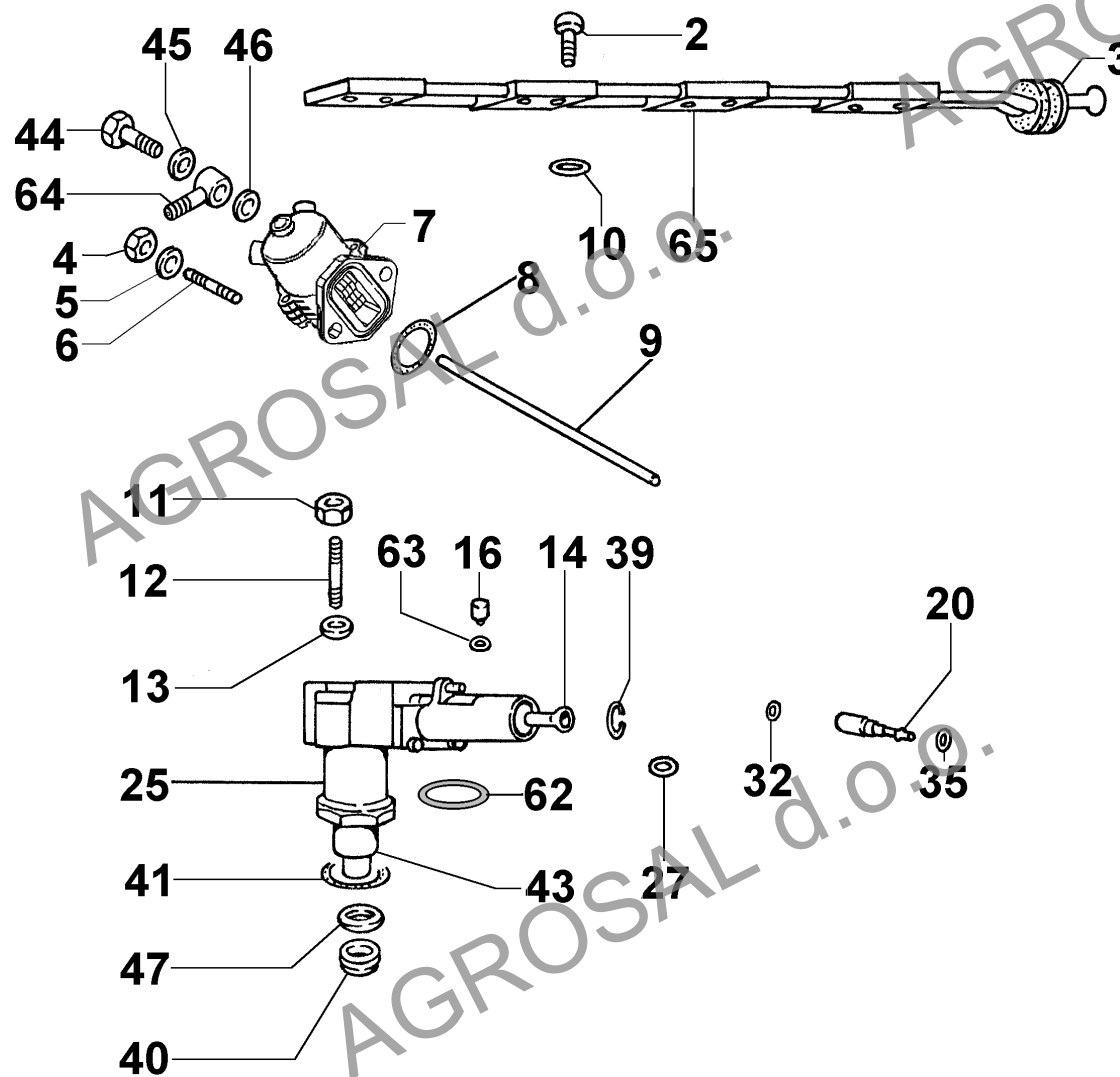
PORTER
VAN



**FUEL SYSTEM**

POS.	CODE	DESCRIPTION	Qty
2	9730.313	fix.screw	8
3	4750.014	delivery pipe seal	1
4	3240.164	nut M 8	2
5	7555.029	washer diam. 8	2
6	6780.049	intake stud M 8 X 20 (36)	2
7	6585.096	feed pump	1
8	1200.087	O ring 3150	1
9	7200.721	drive rod	1
10	1200.286	seal ring 9,25X1,78	8
11	3240.164	nut M 8	8
12	6780.135	stud	8
13	7555.029	washer diam. 8	8
14	1410.112	tapped	4
16	9680.037	bleeding valve	4
20	6578.211	injection plunger	4
25	6590.285	nozzle-injection pump	4
27	8335.143	adj.spacer 1,90	4
27	8335.144	adj.spacer 1,80	1
27	8335.145	adj.spacer 1,70	1
27	8335.146	adj.spacer 1,60	1
27	8335.147	adj.spacer 1,50	1
27	8335.148	adj.spacer 1,40	1
27	8335.149	adj.spacer 1,30	1
27	8335.150	adj.spacer 1,20	1
27	8335.151	adj.spacer 1,10	1
27	8335.152	adj.spacer 1,00	1
32	4760.015	valve gasket	4
35	1200.277	seal ring 20,35X1,78	4
39	«-----»	circlip diam. 19 - see Pos. F 25	0
40	5989.007	spark arrestor	4
41	1200.213	O ring 26,70X1,78	4
43	6531.436	nozzle	4
44	1901.030	union bolt M 10	2
45	4670.059	copper gasket diam.10	2
47	4670.082	copper gasket diam.14 X 1	4
62	1200.287	O ring 25,12X1,78	4
63	4760.038	gasket	4
64	7270.138	banjo union diam.10	1
65	9375.988	delivery pipe	1

F
FOCS
PIAGGIO





LOMBARDINI

A KOHLER COMPANY

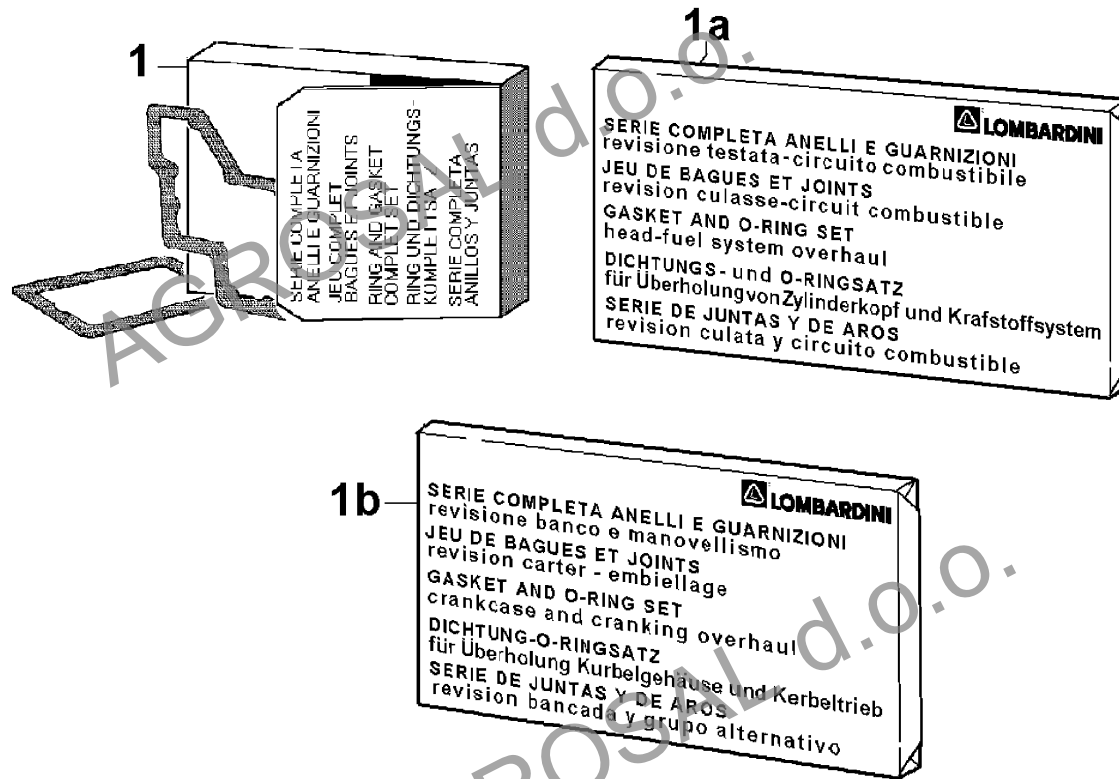
Group: Piaggio FOCS

Engine: LDW 1204/P Drawing: N

GASKET/RING SET

POS.	CODE	DESCRIPTION	Qty
1	«-----»	RING AND GASKET COMPLETE SET (without Pos. L 61) - see Pos. N 1	0
1a	8205.110	RING AND GASKET COMPLETE SET - head and fuel system overhaul (w	1
1b	8205.111	RING AND GASKET COMPLETE SET - crankcase and cranking overhaul	1

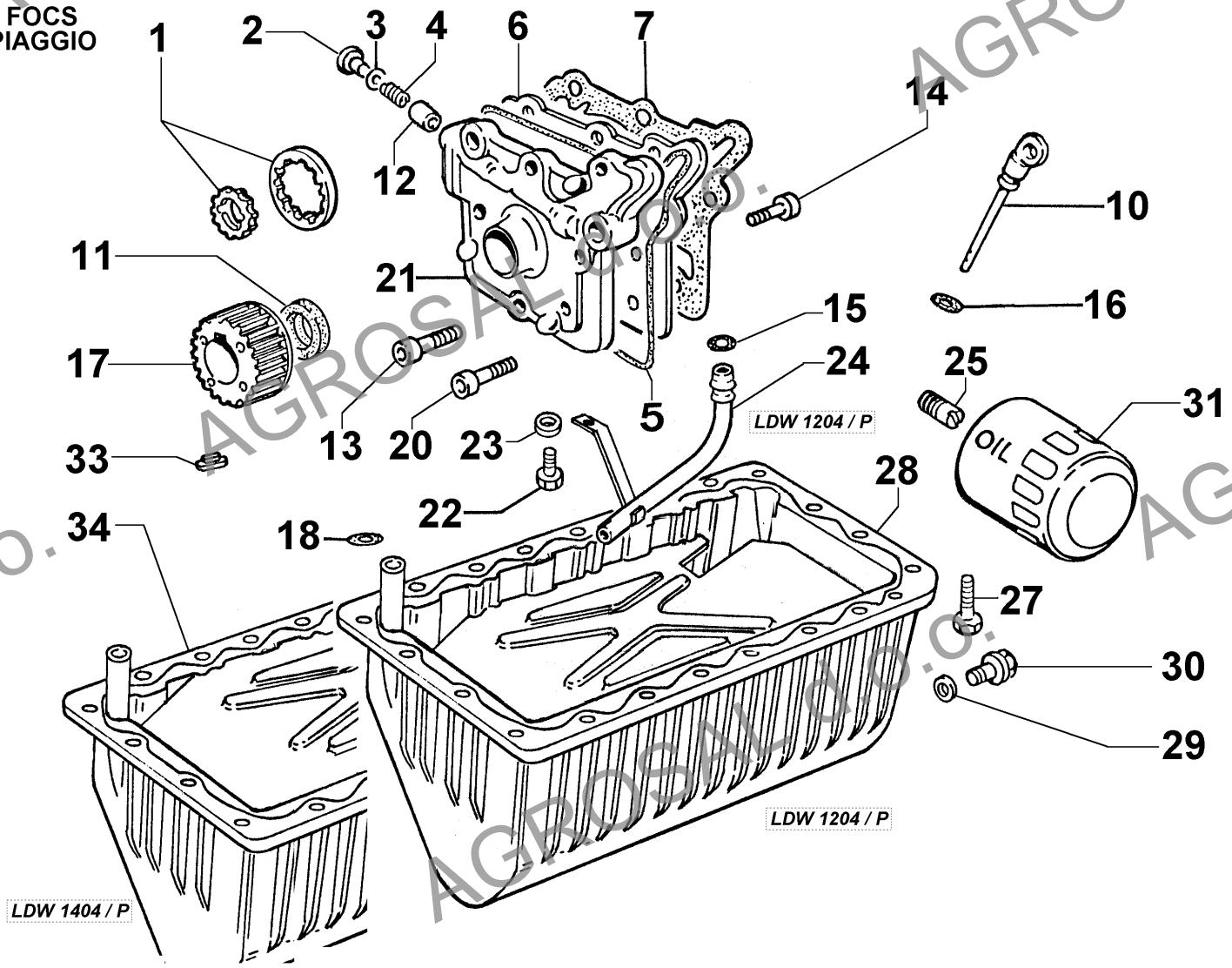
N
FOCS
PIAGGIO



**LUBRICATING SYSTEM**

POS.	CODE	DESCRIPTION	Qty
1	<----->	see Pos. 21	0
2	9015.005	plug	1
3	4670.060	copper gasket diam.12	1
4	5625.008	pressure valve spring	1
5	1200.292	O ring	1
6	<----->	see Pos. 21	0
7	4580.216	gasket	1
10	1400.293	dipstick	1
11	1213.343	seal ring 32X50X6	1
12	6495.045	drive rod	1
13	9732.064	screw M 8 X 30	1
14	9800.061	screw M 6 X 16	3
15	1200.274	oil seal diam. 8,00	1
16	1200.266	rubber oil seal	2
17	6975.292	driving pulley	1
18	1200.030	rubber oil seal	1
20	9732.074	screw M 8 X 20	6
21	6605.099	OIL PUMP	1
22	1760.130	bolt M 6 X 1 X 12	1
23	<----->	washer	0
24	9485.227	scavenge oil pipe	1
25	7265.021	oil filter connector	1
27	1760.131	bolt M 6 X 1 X 20	22
28	<----->	oil pan - supplied by Piaggio	0
29	4670.088	copper gasket 18X24X1	1
30	9040.024	plug M 18 h = 22	1
31	2175.131	oil filter cartridge (mm 90)	1
33	<----->	see Pos. C 9	0

H
FOCS
PIAGGIO





LOMBARDINI

A KOHLER COMPANY

Group: Piaggio FOCS

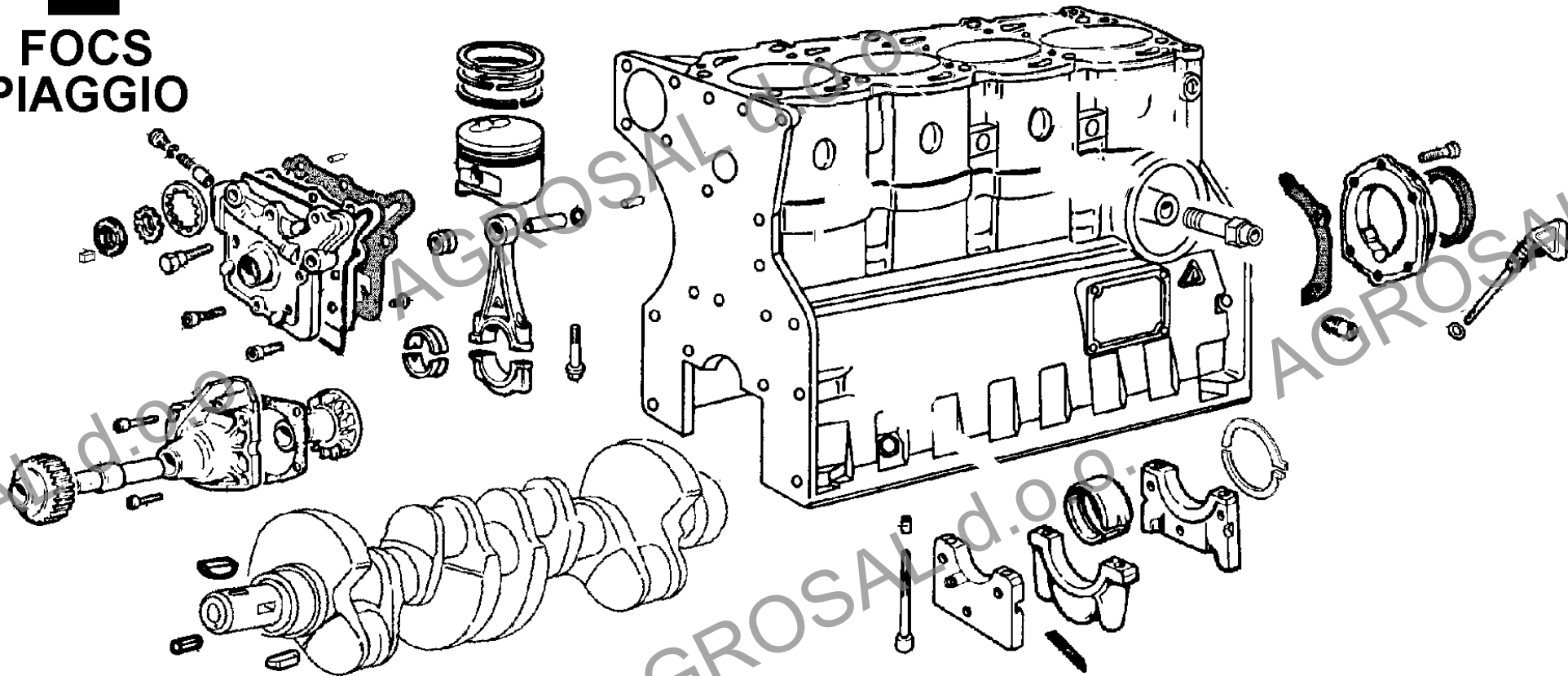
Engine: LDW 1204/P Drawing: Z

SHORT BLOCK

POS.	CODE	DESCRIPTION	Qty
1	«-----»	short block no longer available	0

Z

FOCS
PIAGGIO



**LOMBARDINI**

A KOHLER COMPANY

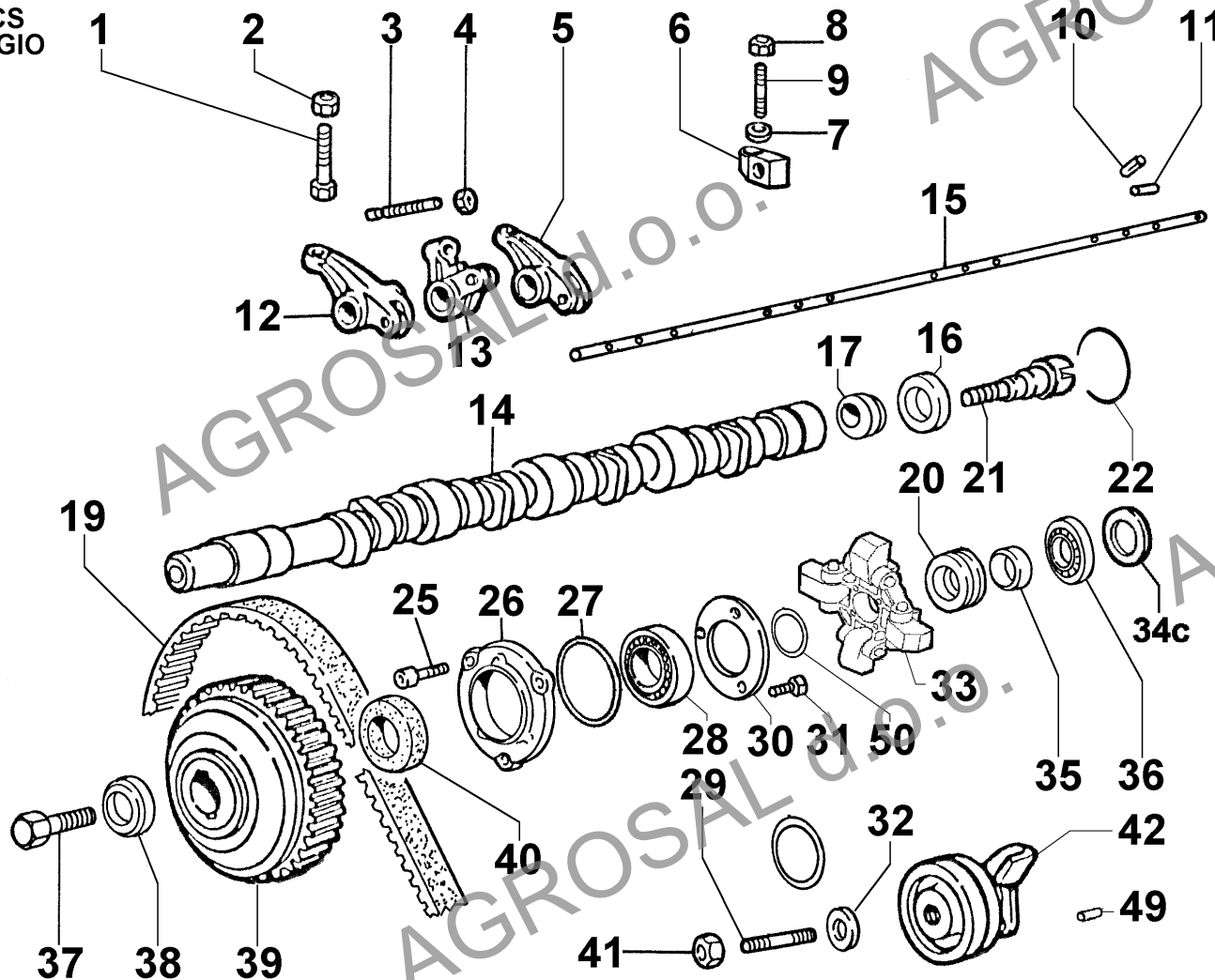
Group: Piaggio FOCS

Engine: LDW 1204/P Drawing: D

TIMING/SPEED GOVERNOR

POS.	CODE	DESCRIPTION	Qty
1	9850.088	adj.screw	8
2	3240.008	nut M 6	8
3	9850.110	adj.screw	4
4	3240.051	nut	4
5	1541.193	rocker arm (inlet/eXhaust)	4
5	6045.112	ROCKER ARM ASS.Y	1
6	8615.105	rock.arm shaft support	5
7	7625.130	washer diam. 10,2	5
8	3240.033	nut M 10	5
9	6800.088	stud M 10 X 45	5
10	8430.061	lockpin 4 X 14	1
11	9080.182	plug diam.10	2
12	1541.193	rocker arm (inlet/eXhaust)	4
13	1541.220	inj.pump rocker arm	4
14	1011.641	camshaft 4500 G/1	1
15	6045.083	ROCKER ARM SHAFT	1
16	1970.460	sleeve	1
17	3580.035	cam (4300 > G/1')	1
19	2440.338	timing belt z=113	1
20	5401.250	CONTROL SLEEVE	1
21	«-----»	see Pos. P 10	0
22	1200.233	O ring 40,95 X 2,62	1
25	9730.010	screw M 6 X 16	3
26	2690.294	GOVERNOR COVER	1
27	1202.037	rubber oil seal	1
28	3001.066	ball bearing	1
29	6800.090	stud	1
30	6275.166	plate	1
31	9730.010	screw M 6 X 16	3
32	7495.010	washer	1
33	8805.091	weight support (4300 R.P.M.)	1
34c	7352.063	thrust washer	1
35	1585.085	sleeve	1
36	3110.165	thrust roller	1
37	9820.142	screw	1
38	7625.045	washer diam.11	1
39	7090.012	contr.gear pulley	1
40	1213.303	seal ring 35X52X7	1
41	3240.033	nut M 10	1
42	4110.009	jockey pulley	1
49	8430.105	taper pin 8X16	1

D
FOCS
PIAGGIO



**LOMBARDINI**

A KOHLER COMPANY

Group: Piaggio FOCS

Engine: LDW 1204/P Drawing: P

VACUUM PUMP

POS.	CODE	DESCRIPTION	Qty
4	1200.233	O ring 40,95 X 2,62	1
5	3855.133	flange for vaccum pump fitting	1
6	4431.148	gasket	1
7	6601.112	vacuum pump	1
8	9730.010	screw M 6 X 16	3
9	9730.118	screw M 8 X 22	3
10	9730.398	vacuum pump screw	1

