

AGROSAL d.o.o.

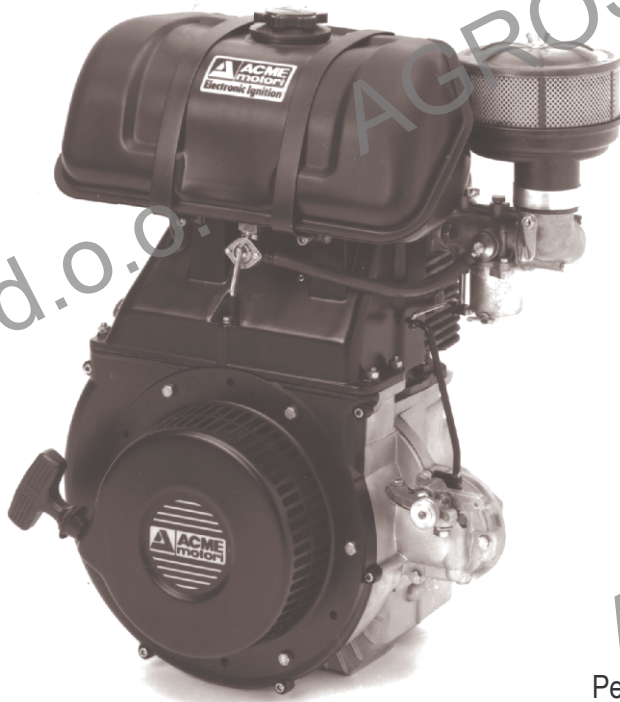


**FE 82W, AL 480W-550W
VT 88W-94W**



AGROSAL d.o.o.

Gregorčičeva ulica 38, 5270 Ajdovščina
telefon: 05 368 90 96, fax: 05 368 90 97
e-mail: info@agrosal.si, www.agrosal.si



FE 82W
AL 480W - 550W
VT 88W - 94W

Per motori accensione a puntine platinato fino al n. 352599

For engines breaker points up to n. 352599

Per motori accensione elettronica dal n. 352600

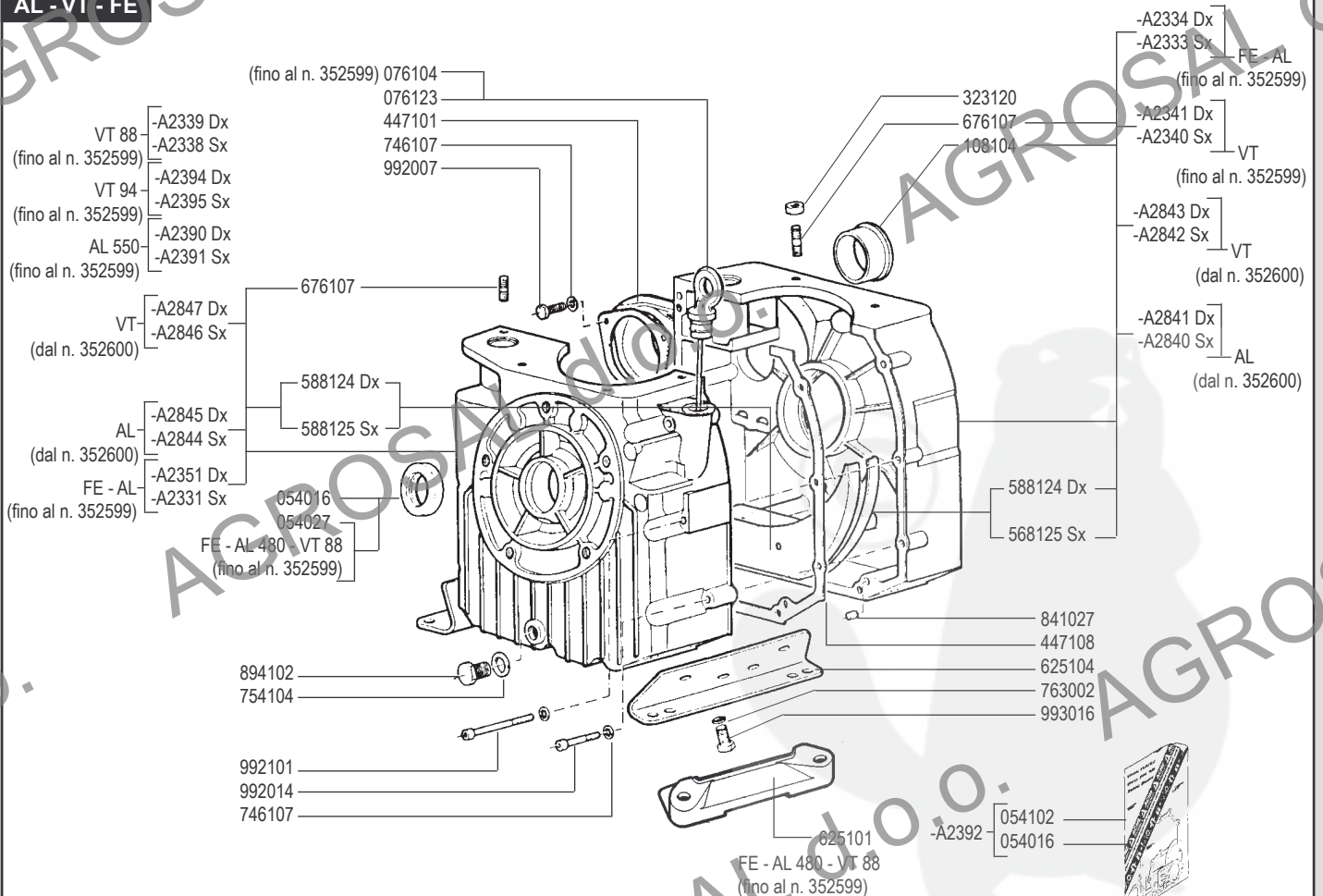
For engines electronic ignition starting from n. 352600



RICAMBI - SPARE PARTS - ERSATZTEILE - PIECES DETACHEES - REPUESTOS



AL - VT - FE



AL - VT - FE

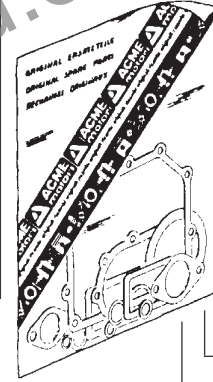
A2404 Ø 89 AL480W-88 VT88W
 A2405 Ø 89,5 AL480W-88,5 VT88W
 A2402 Ø 88 AL480W-89 VT88W
 A2403 Ø 88,5 AL480W-89,5 VT88W

A2398 Ø 88 AL480W-VT88W
 A2399 Ø 88,5 AL480W-VT88W
 A2400 Ø 89 AL480W-VT88W
 A2401 Ø 89,5 AL480W-VT88W

A2076 Ø 82 FE82W
 A2077 Ø 82,5 FE82W
 A2078 Ø 83 FE82W
 A2079 Ø 83,5 FE82W

A2382 Ø 94 AL550W-VT94W
 A2383 Ø 94,5 AL550W-VT94W
 A2384 Ø 95 AL550W-VT94W
 A2385 Ø 95,5 AL550W-VT94W

A2072 Ø 82 FE82W
 A2073 Ø 82,5 FE82W
 A2074 Ø 83 FE82W
 A2075 Ø 83,5 FE82W

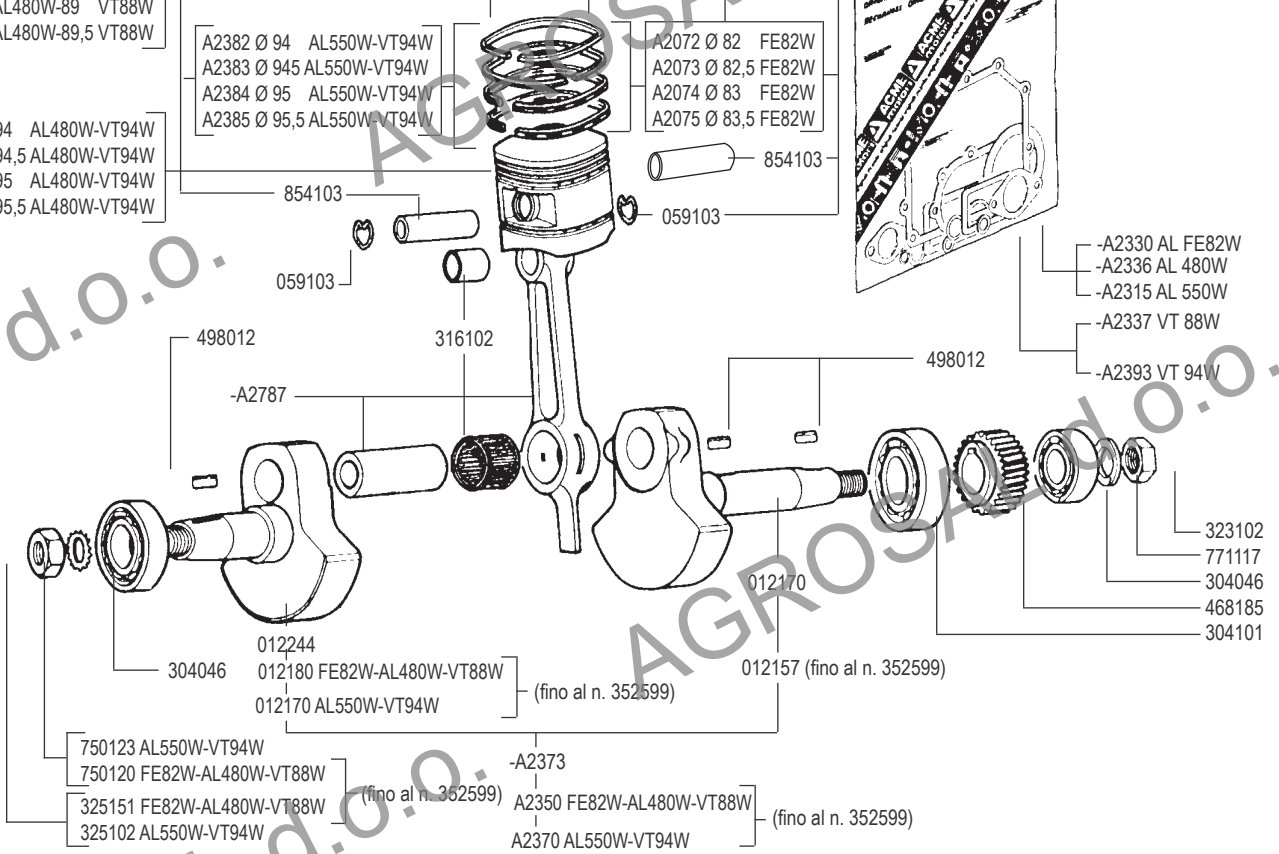


A2386 Ø 94 AL480W-VT94W
 A2387 Ø 94,5 AL480W-VT94W
 A2388 Ø 95 AL480W-VT94W
 A2389 Ø 95,5 AL480W-VT94W

854103
 059103

854103
 059103

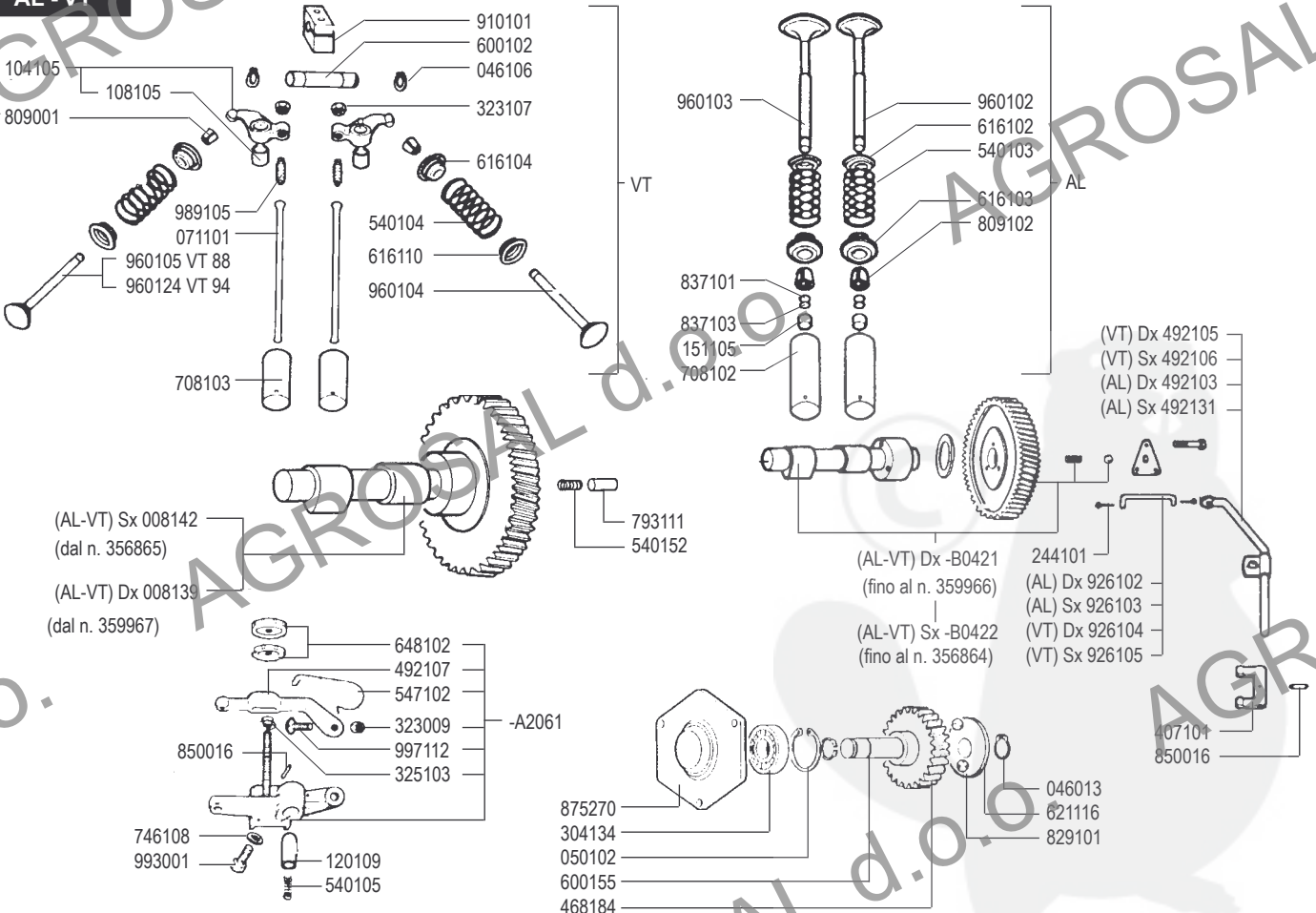
-A2330 AL FE82W
 -A2336 AL 480W
 -A2315 AL 550W
 -A2337 VT 88W
 -A2393 VT 94W



RICAMBI - SPARE PARTS - ERSATZTEILE - PIECES DETACHEES - REPUESTOS



AL - VT



VT

AL - FE

- 325166
- 232007
- 536004
- 676113
- A2110
- 325104
- 449141

449145

- 676109
- 323003
- 676108
- 588126
- 325153
- 750004
- 325106
- 750004
- 989109
- 323003
- 767002
- 526104

- 059128
- 464107
- 464109
- 676107
- 449136

- VT 88 449143
- VT 94 449106

676111

- VT 88 203113
- VT 94 203119

449129

- 995040
- 771116
- A2108 VT 88
- A2109 VT 88
- A2396 VT 94
- A2397 VT 94

- 323027
- 750004
- 771009
- 989108
- 995115
- 995040

- 918138 FE 82 P
- 918137 FE 82 B
- 918116 AL 480 P
- 918139 AL 480 B
- 918141 AL 550 P
- 918140 AL 550 B

771116

-A2064

- 232007
- 536004
- 992039

- 948031
- 449110

449138

993113

449147

464104

059126

- 526102
- 325153
- 750004

- 448137 FE 82
- 449148 AL 480
- 448135 AL 550

- A2344 AL 480
- A2345 AL 480
- A2376 AL 550
- A2377 AL 550
- A2342 FE 82
- A2343 FE 82



RICAMBI - SPARE PARTS - ERSATZTEILE - PIECES DETACHEES - REPUESTOS



AL - VT - FE

080103

080001

--2290 VT

-A2082 AL

151107

(B) 147115

(P) 147111

375157

VT Dx 296146
VT Sx 296149

(AL) Dx 296144
(AL) Sx 296148

449104

588104

323009

746107

447109

841027

592102

054016

- VT Dx -A2863
- VT Sx -A2862
- AL Dx -A2861
- AL Sx -A2860
- FE Dx -A2346
- FE Sx -A2347

- 151123
- 700107
- 325232

771005

992011

746107

106119

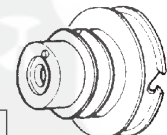
Dx 696104
Sx 696136

992112

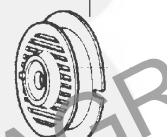
746109

771001

992102



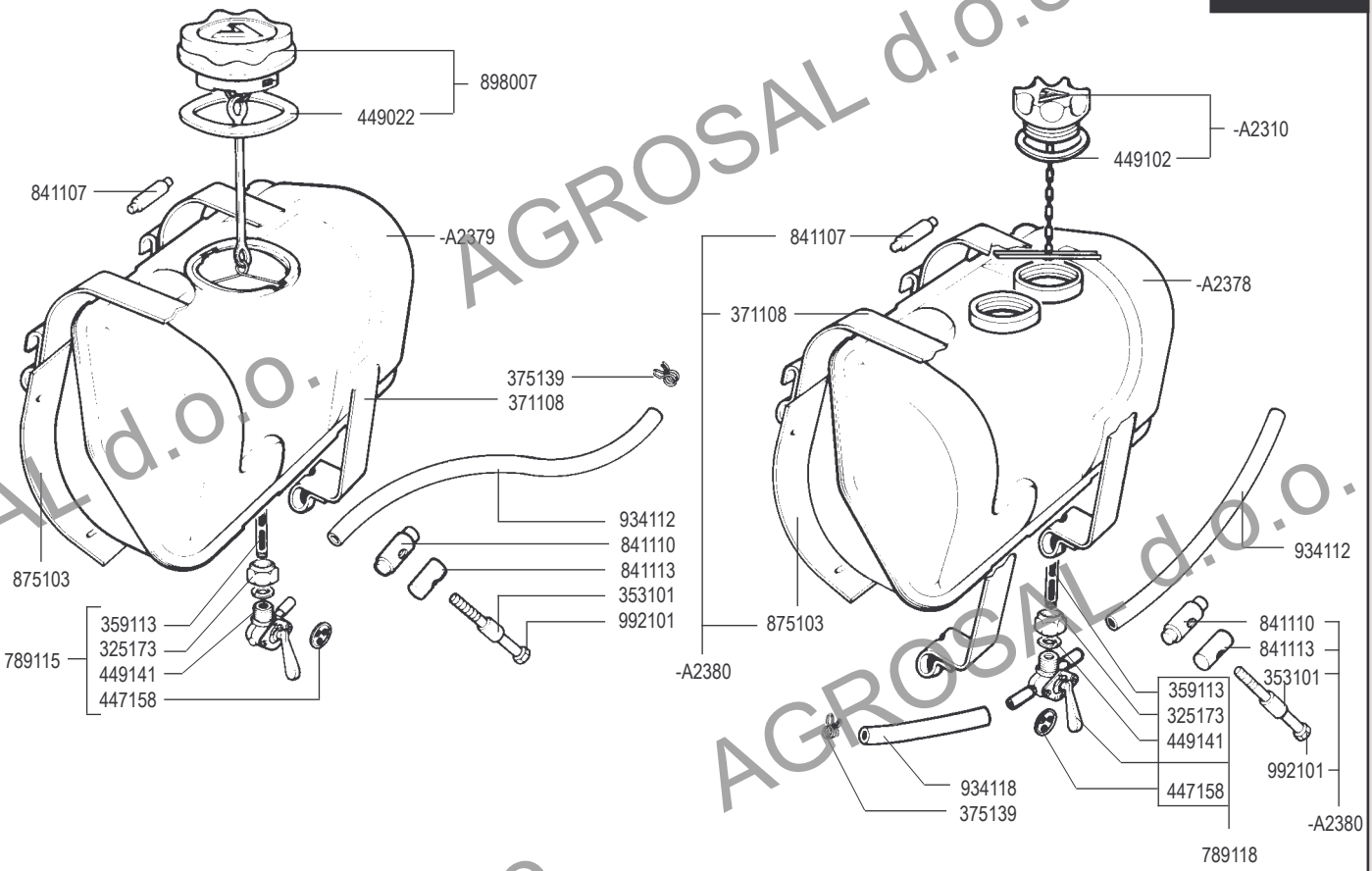
696155



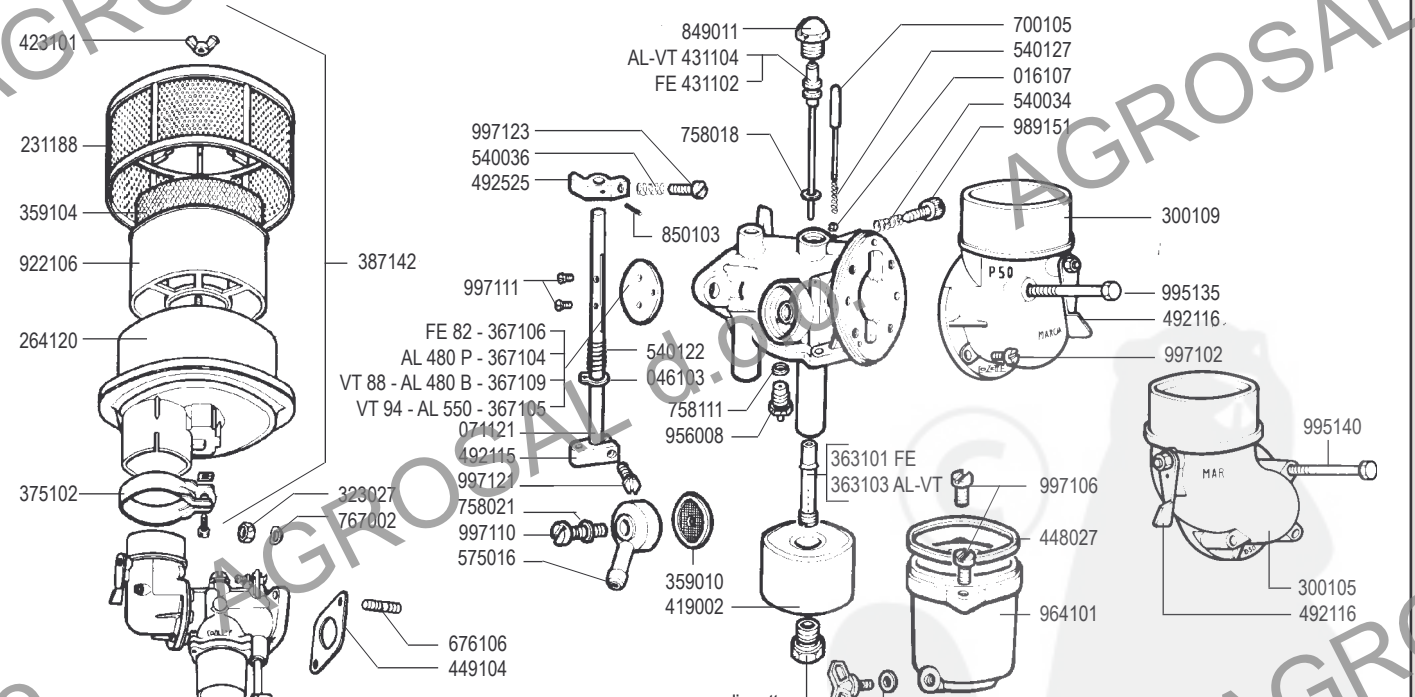
Dx 231180
Sx 231161

976187 Dx
976188 Sx

734103



RICAMBI - SPARE PARTS - ERSATZTEILE - PIECES DETACHEES - REPUESTOS

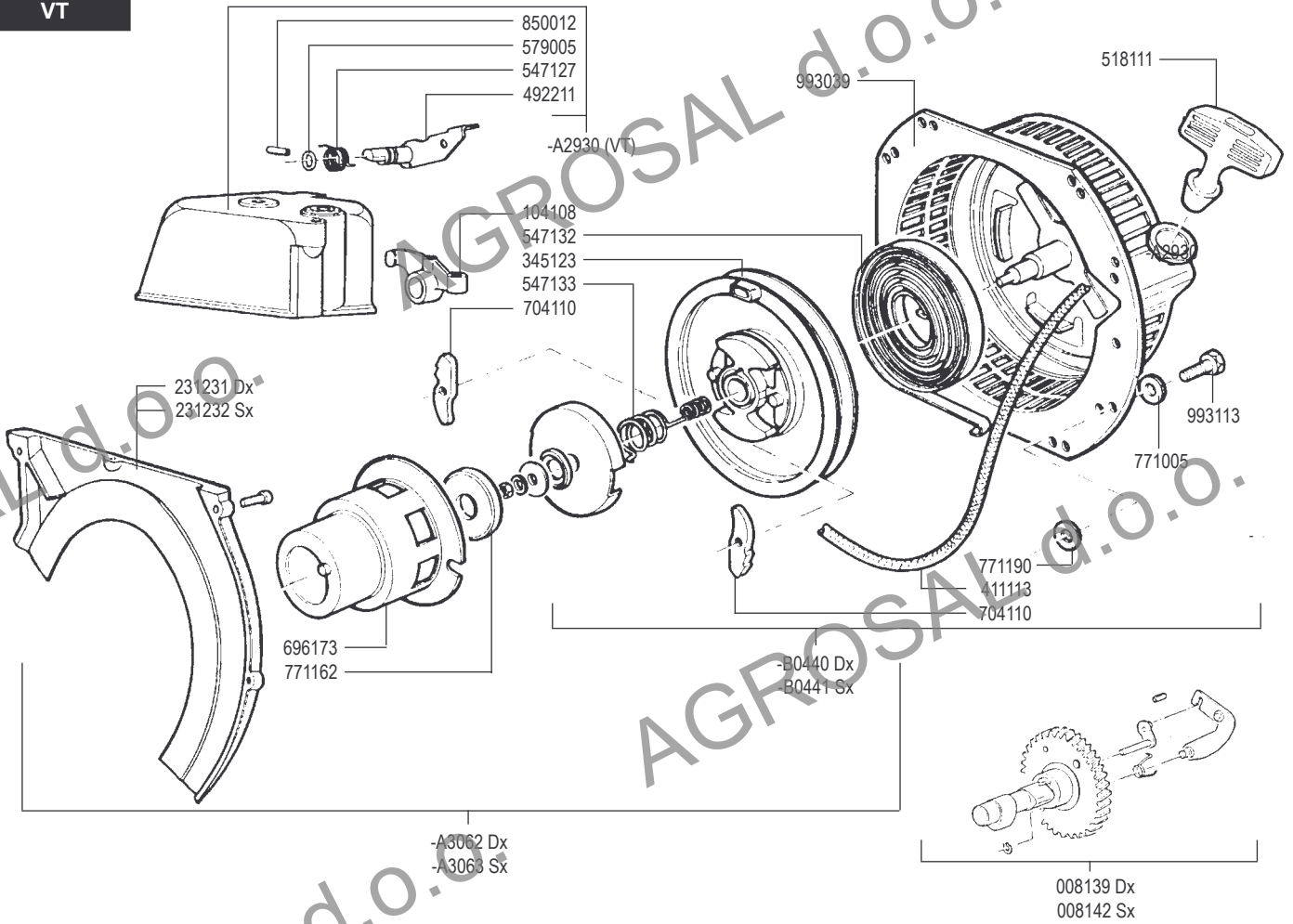


	dia. getto	dia. main
AL 480 B - 155109	(110)	
AL 480 P - 155104	(120)	
AL 550 B - 155111	(120)	
AL 550 P - 155110	(125)	
VT 88 - 155105	(105)	
VT 94 - 155111	(120)	
FE B - 155108	(100)	
FE P - 155103	(105)	

	dia. getto	dia. main
431103	(105)	
431118	(110)	
431119	(115)	
431107	(120)	
431106	(125)	
431010	(100)	

B = Benzina	P = Petrolio
Gasoline	Kerosene
Essence	Petrole
Benzin	Petroleum
Gasolina	Petrole

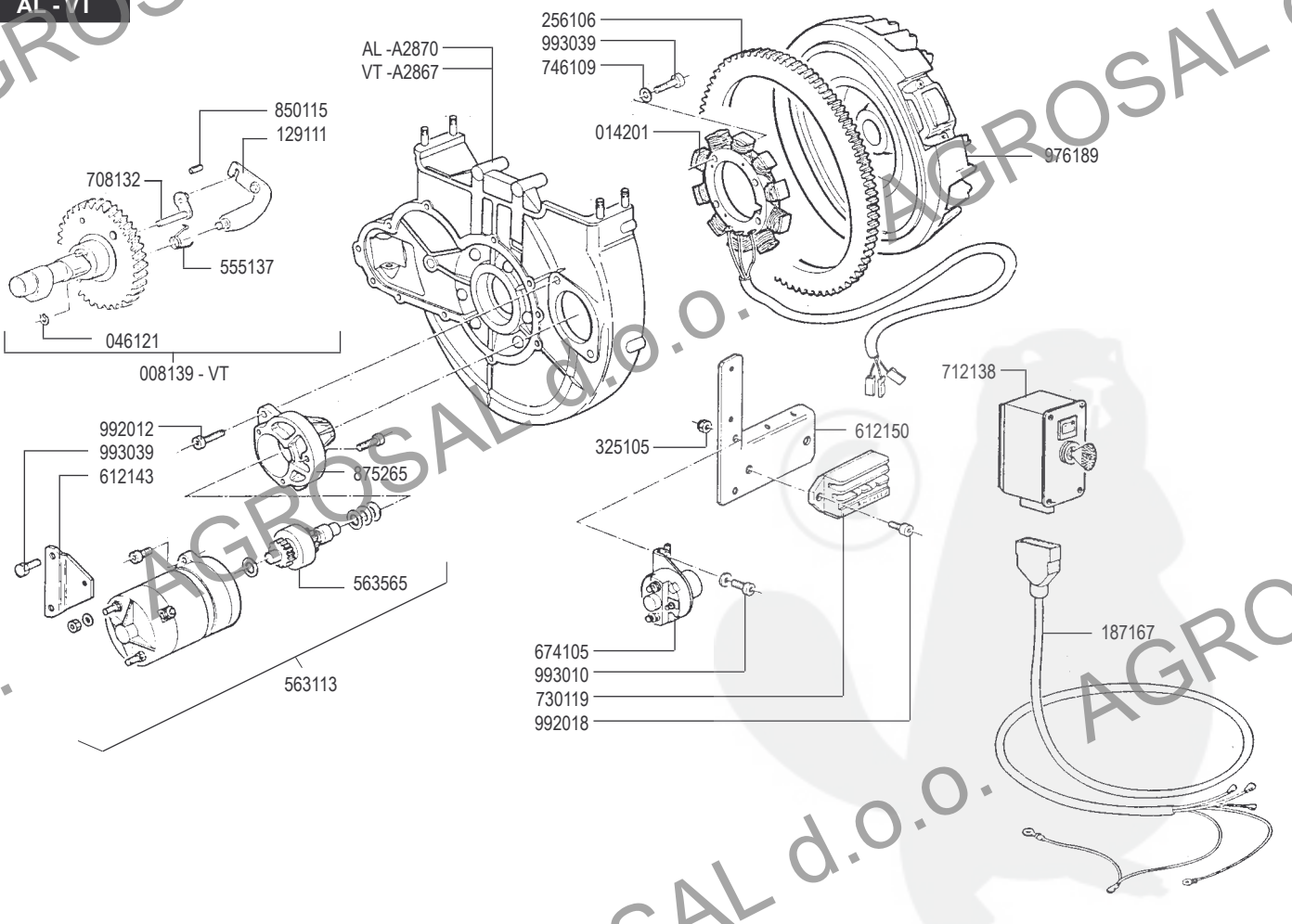
VT

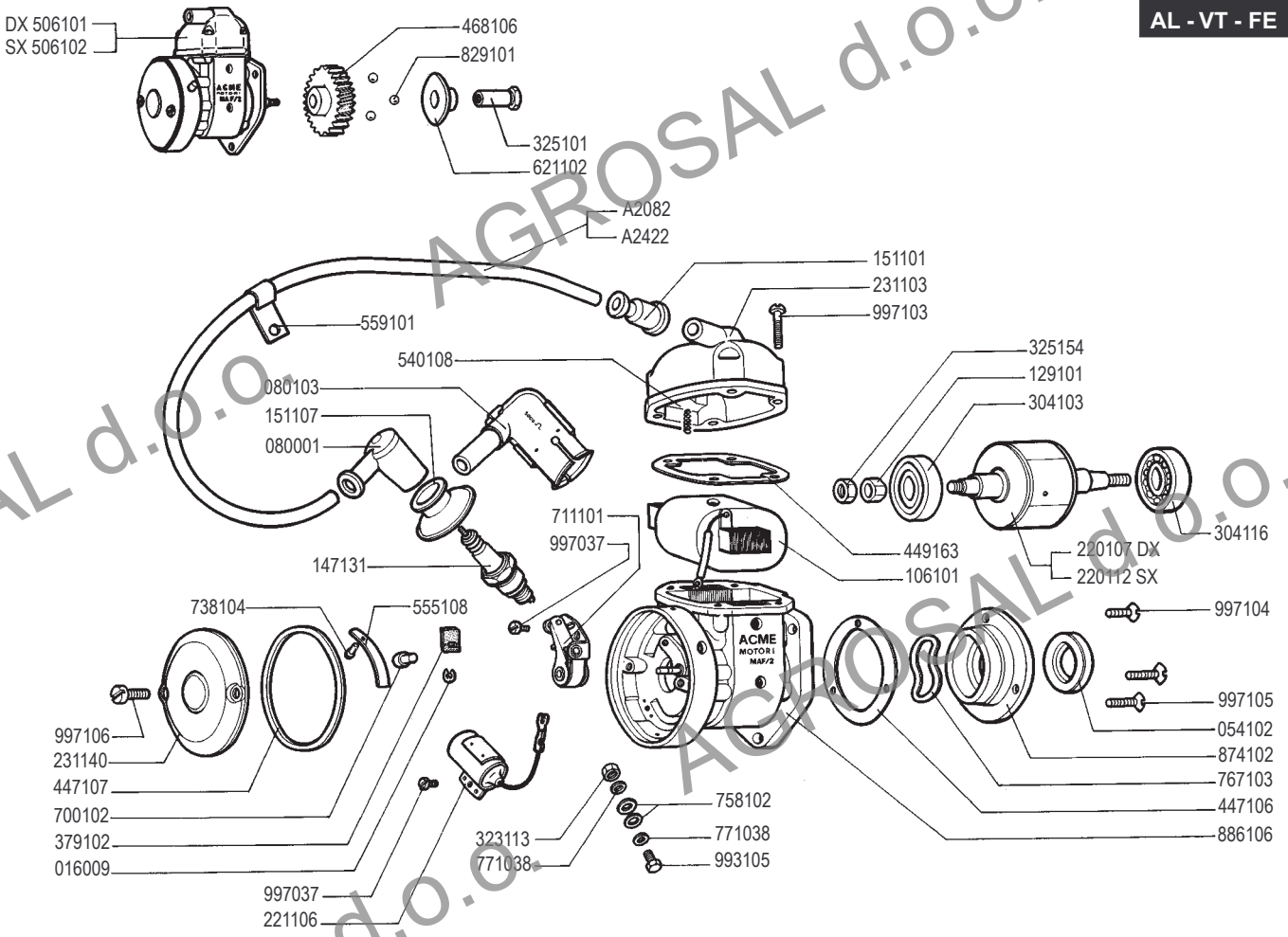


RICAMBI - SPARE PARTS - ERSATZTEILE - PIECES DETACHEES - REPUESTOS

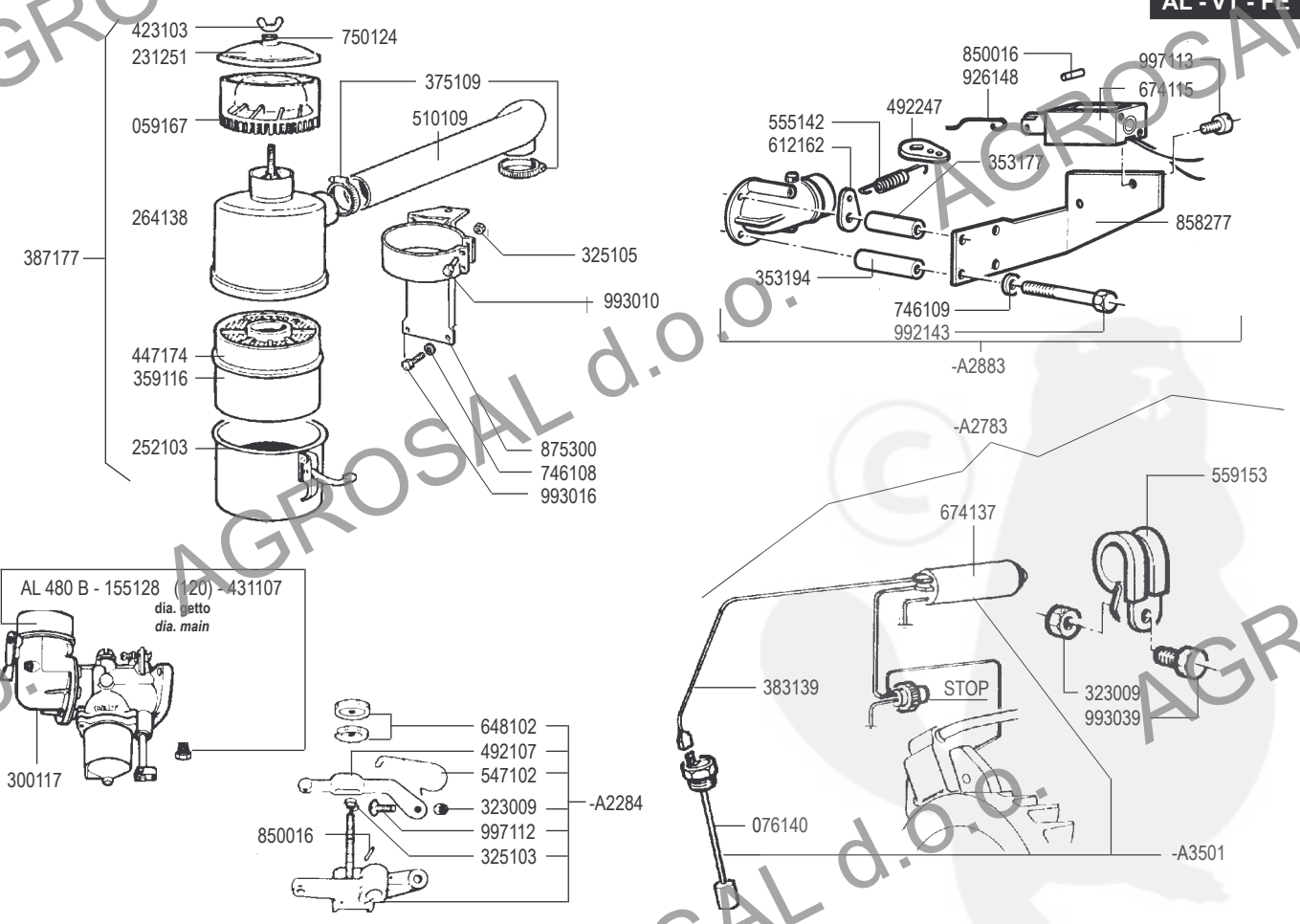


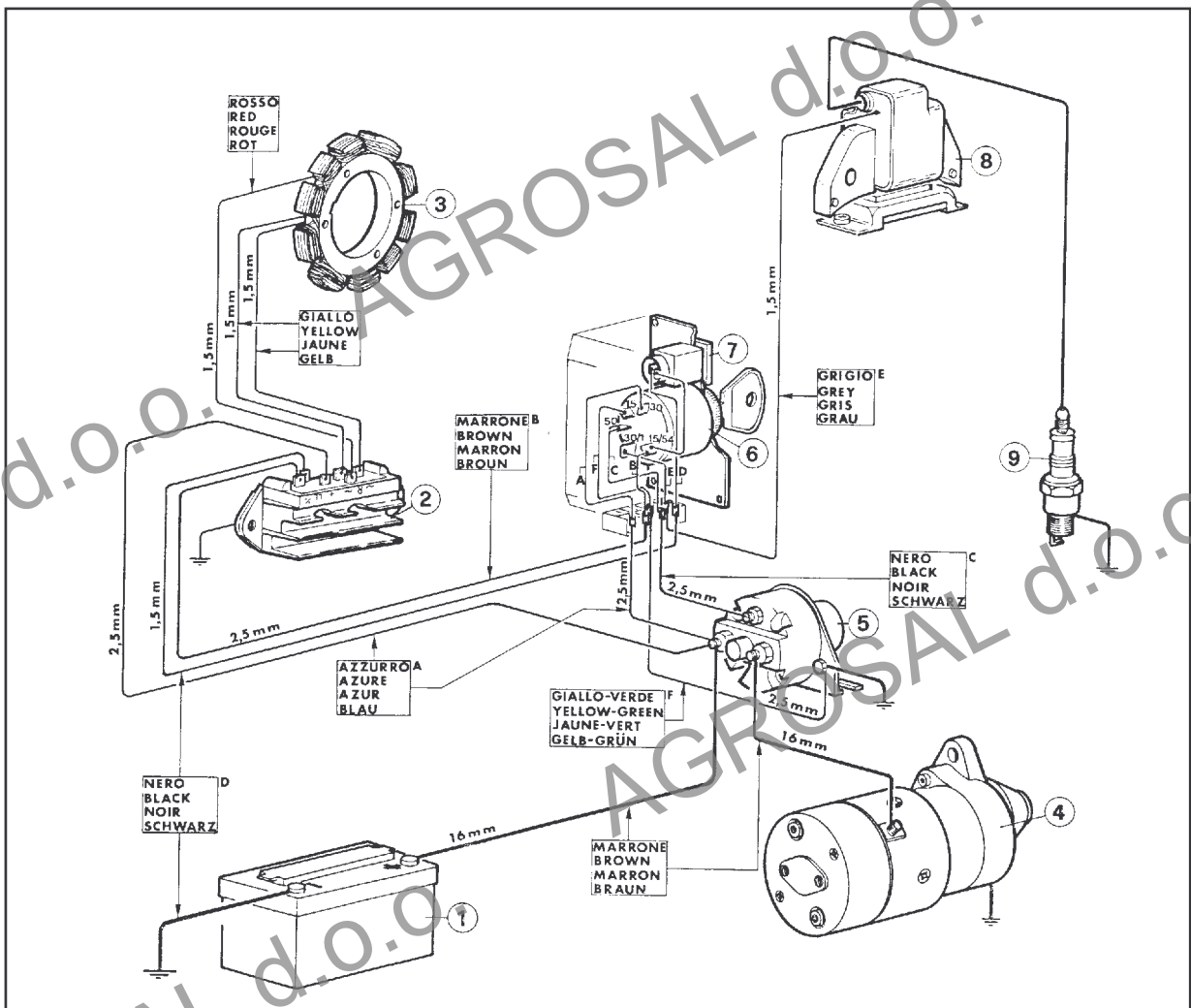
AL - VT





RICAMBI - SPARE PARTS - ERSATZTEILE - PIECES DETACHEES - REPUESTOS





VARIANTI PER MOTORI AL-VT CON ACCENSIONE ELETTRONICA
a partire dal motore n. 352600

IMPIANTO ACCENSIONE ELETTRONICA

Lo schema del sistema di accensione è indicato in fig. A

MANUTENZIONE

La misura del traferro fra bobina e magnete è di **0,45 ÷ 0,50 mm.**

VARIATIONS FOR ENGINES AL-VT WITH ELECTRONIC IGNITION
starting from engine n. 352600

ELECTRONIC IGNITION

The plant of the ignition system is shown in fig. A

MAINTENANCE

The air gap between magneto and ignition coil has to be adjusted to **0.45 / 0.50 mm.** (0.0177 / 0.0197 in.).

VARIATIONS POUR MOTEURS AL-VT EQUIPES DE L'ALLUMAGE ELECTRONIQUE
à partir du moteur n. 352600

INSTALLATION ALLUMAGE ELECTRONIQUE

Le schéma d'allumage électronique est indiqué à la fig. A

ENTRETIEN

Le jeu entre l'aimant et la bobine (entrefer) doit être réglé à la valeur de **0,45 ÷ 0,50 mm.**

MOTOREN AL-VT MIT ELEKTRONISCHER ZUNDANLAGE
ab Seriennummer 352600

ELEKTRONISCHE ZUNDANLAGE

Das Schema der Zundanlage wird in Abb. A dargestellt.

WARTUNG

Der Abstand zwischen elektronischer Zundanlage und Schwungradmagnet muß **0,45 bis 0,50 mm** betragen.

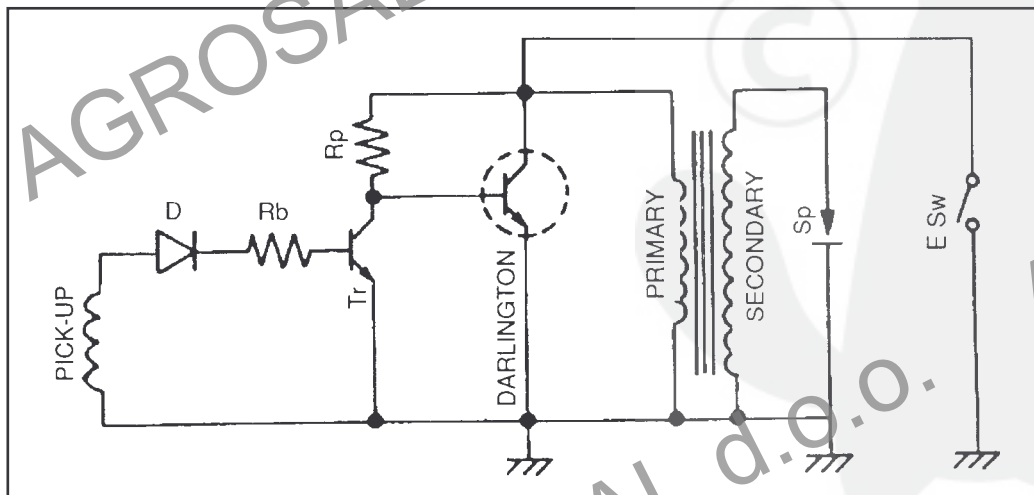


Fig A