

AGROSAL d.o.o.



LOMBARDINI
A KOHLERCOMPANY

4LD



AGROSAL d.o.o.

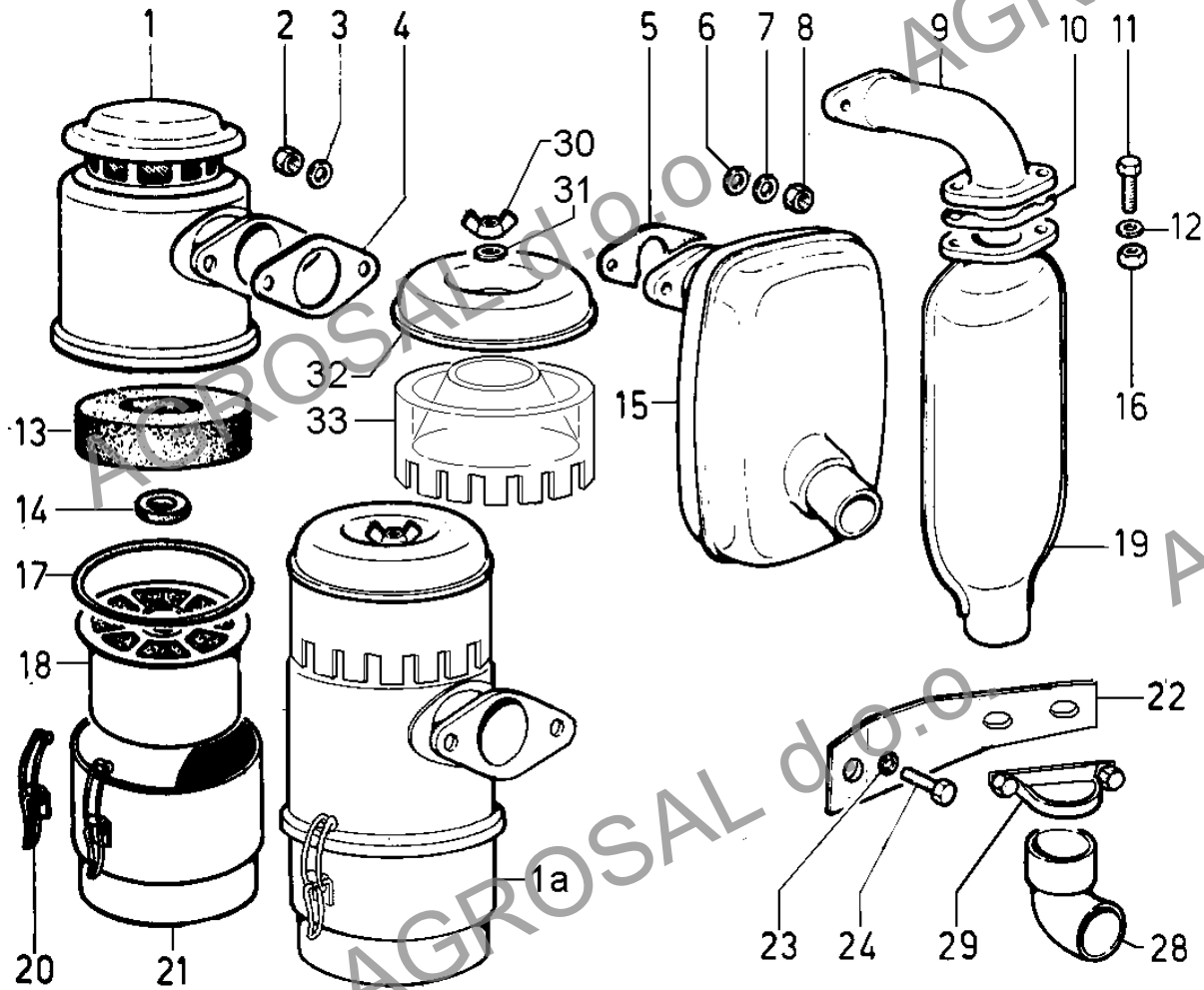
Gregorčičeva ulica 38, 5270 Ajdovščina
telefon: 05 368 90 96, fax: 05 368 90 97
e-mail: info@agrosal.si, www.agrosal.si

**INTAKE AND EXHAUST**

POS.	CODE	DESCRIPTION	Qty
1	3700.139	AIR CLEANER	1
1a	3700.140	AIR CLEANER	1
2	3240.037	nut	2
3	7555.008	washer diam.10	2
4	4501.003	gasket	2
5	4500.097	gasket	2
6	7625.019	washer diam.10	2
7	7565.011	washer diam.10	2
8	3240.053	nut	2
13	5496.110	upper filter.element	1
14	1261.073	seal ring diam. 62,5	1
15	5460.090	eXhaust muffler	1
17	4776.032	gasket h= 7 diam. 154	1
18	5496.111	filtering element h.87 diam.138	1
20	4115.048	hook	2
21	«-----»	see Pos. 1 ...	0
30	3200.002	wing nut M 6	1
31	4775.137	gasket	1
32	2125.056	prefilter cap	1
33	1301.069	cyclonic prefilter (Ø 138)	1

A

4LD

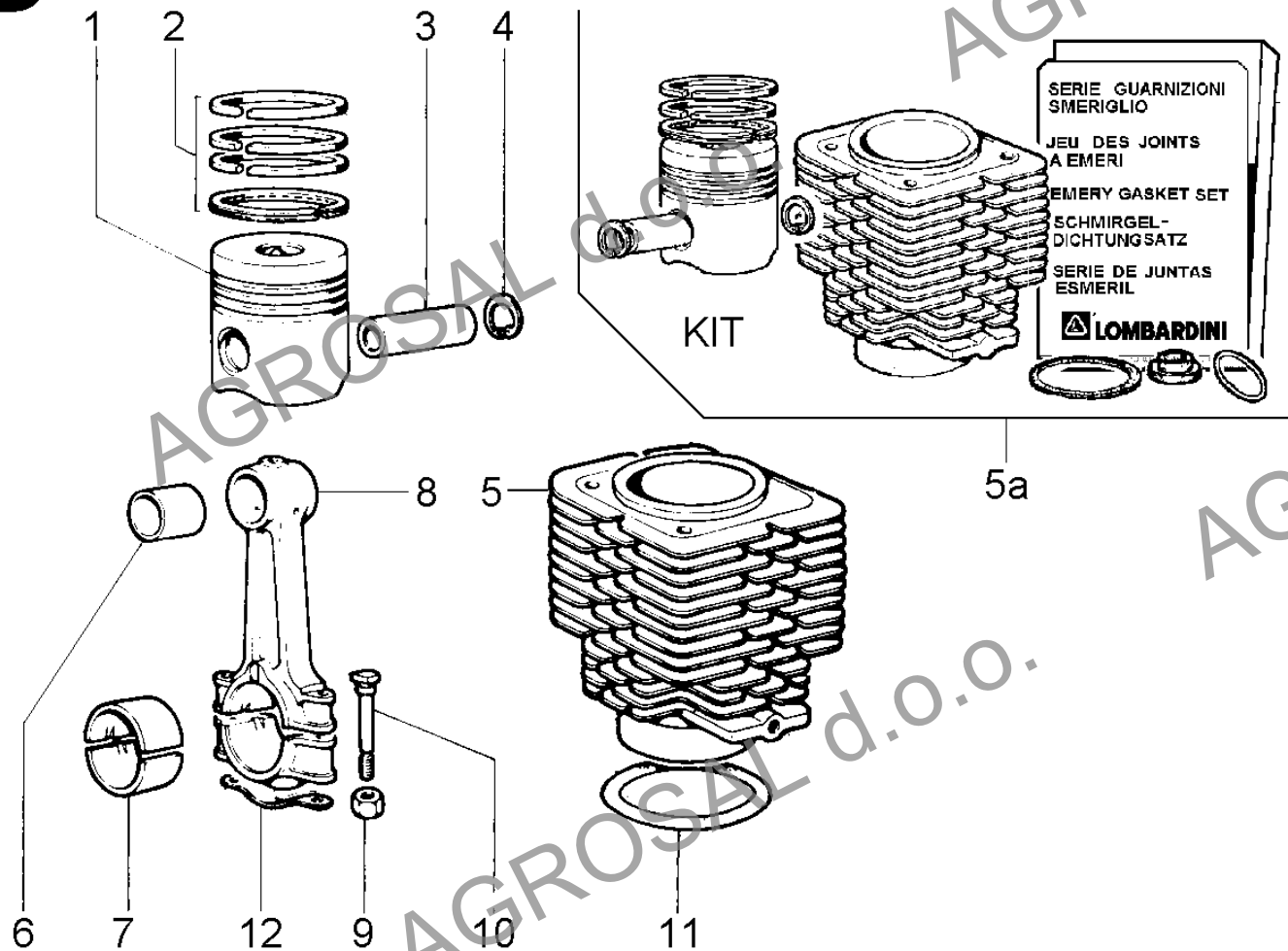


**CONNECTING ROD/PISTON SET/CYLINDER**

POS.	CODE	DESCRIPTION	Qty
1	6500.070	PISTON SET std.	1
1	6500.071	PISTON SET +0,50	1
1	6500.072	PISTON SET +1,00	1
2	8210.052	ring set std.	1
2	8210.053	ring set +0,50	1
2	8210.054	ring set +1,00	1
3	8480.010	gudgeon pin	1
4	1240.026	snap ring	2
5	2380.010	cylinder	1
5a	4898.003	kit cylinder-piston set-emery gasket set	1
6	1630.006	small end bearing	1
7	1640.024	large end bushing std.	1
7	1640.025	big end bushing -0,25	1
7	1640.026	big end bushing -0,50	1
8	1526.002	CONNECTING ROD	1
9	3203.034	nut	2
10	1860.007	bolt	2
11	4410.061	gasket	1
12	<----->	nut	0

B

4LD



**LOMBARDINI**

Group: 4LD

A KOHLER COMPANY

Engine: 4LD 640 Drawing: I

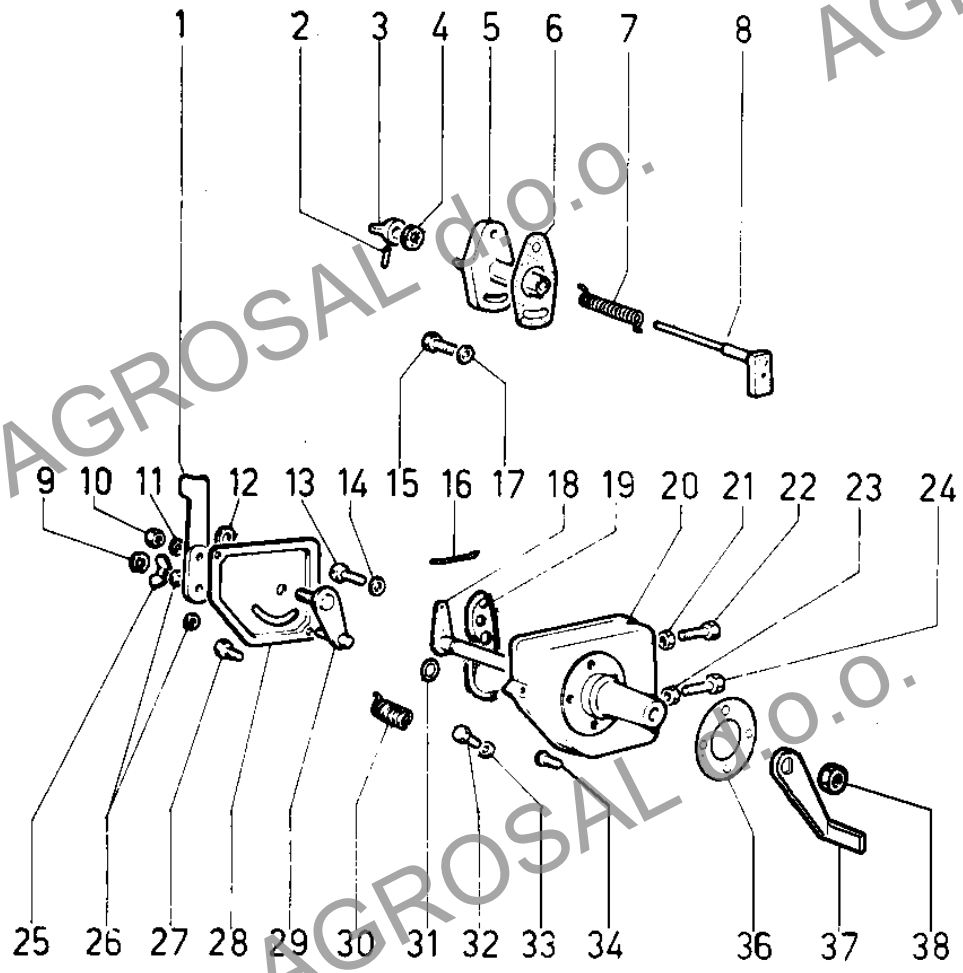
CONTROLS

POS.	CODE	DESCRIPTION	Qty
1	5200.159	lever	1
2	8420.001	locking needle	1
3	<----->	see Pos. 5 ...	0
4	1200.041	O ring 103/2018	1
5	2516.045	FUEL DEVICE CONTROL	1
6	4700.070	gasket 0,25	1
7	5550.007	spring	1
8	<----->	see Pos. 5 ...	0
9	1165.001	circlip	1
10	3240.004	nut M 5	1
11	6330.057	safety plate	1
12	7625.019	washer diam.10	1
13	9820.109	fixing screw	1
14	7625.007	washer diam. 6	1
15	1760.005	bolt M 6 X 1 X 16	2
16	9245.031	tie rod	1
17	7625.059	washer diam. 6,4	2
18	<----->	see Pos. 37 ...	0
19	5200.254	lever	1
20	7865.088	control housing	1
21	3240.008	nut M 6	1
22	1760.029	bolt M 6 X 1 X 30	1
23	3240.008	nut M 6	1
24	1760.029	bolt M 6 X 1 X 30	1
25	3200.015	wing nut	1
26	7626.054	washer diam. 5,3	2
27	9790.037	screw M 6 X 8	2
28	2515.029	ACCELER. CONTROL	1
28	2690.123	cover	1
29	6370.114	plate	1
30	5680.025	spring	1
31	1200.041	O ring 103/2018	1
32	1770.042	bolt M 8 X 1,25 X 10	1
33	7555.029	washer diam. 8	1
34	9800.061	screw M 6 X 16	3
35	<----->	lockpin	0
36	4700.069	gasket	1
37	5200.855	LEVER ASS.Y	1
38	3203.050	selflocking nut M 6	1

AGROSAL d.o.o.

AGROSAL d.o.o.

4LD



d.o.o.

OSAL d.o.o.

AGROSAL

AGROSAL

OSAL d.o.o.

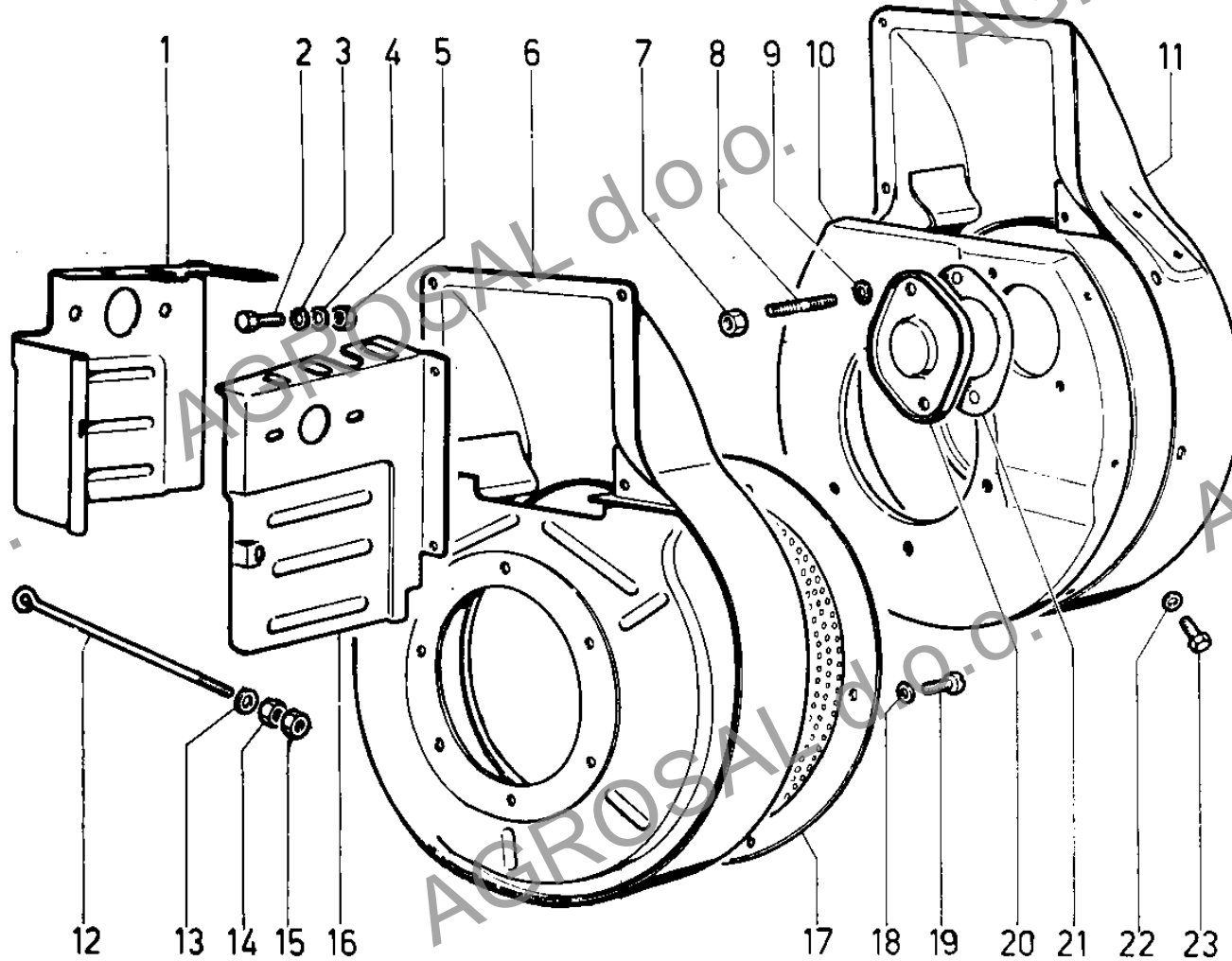
AGROSAL d.o.o.

**COOLING SYSTEM**

POS.	CODE	DESCRIPTION	Qty
1	5065.009	airtight plate	1
2	1760.003	bolt M 6 X 1 X 12	4
3	7565.004	washer diam. 6	4
4	7625.007	washer diam. 6	4
5	3240.008	nut M 6	3
6	2565.076	shroud	1
10	6371.039	shroud plate (electr.starting)	1
11	2565.070	shroud for electr.start.	1
12	9245.025	screw stay	1
13	771R.001	washer diam. 5,3	1
14	3240.003	nut M 4	1
16	5065.012	airtight plate	1
17	←-----→	plate	0

G

4LD

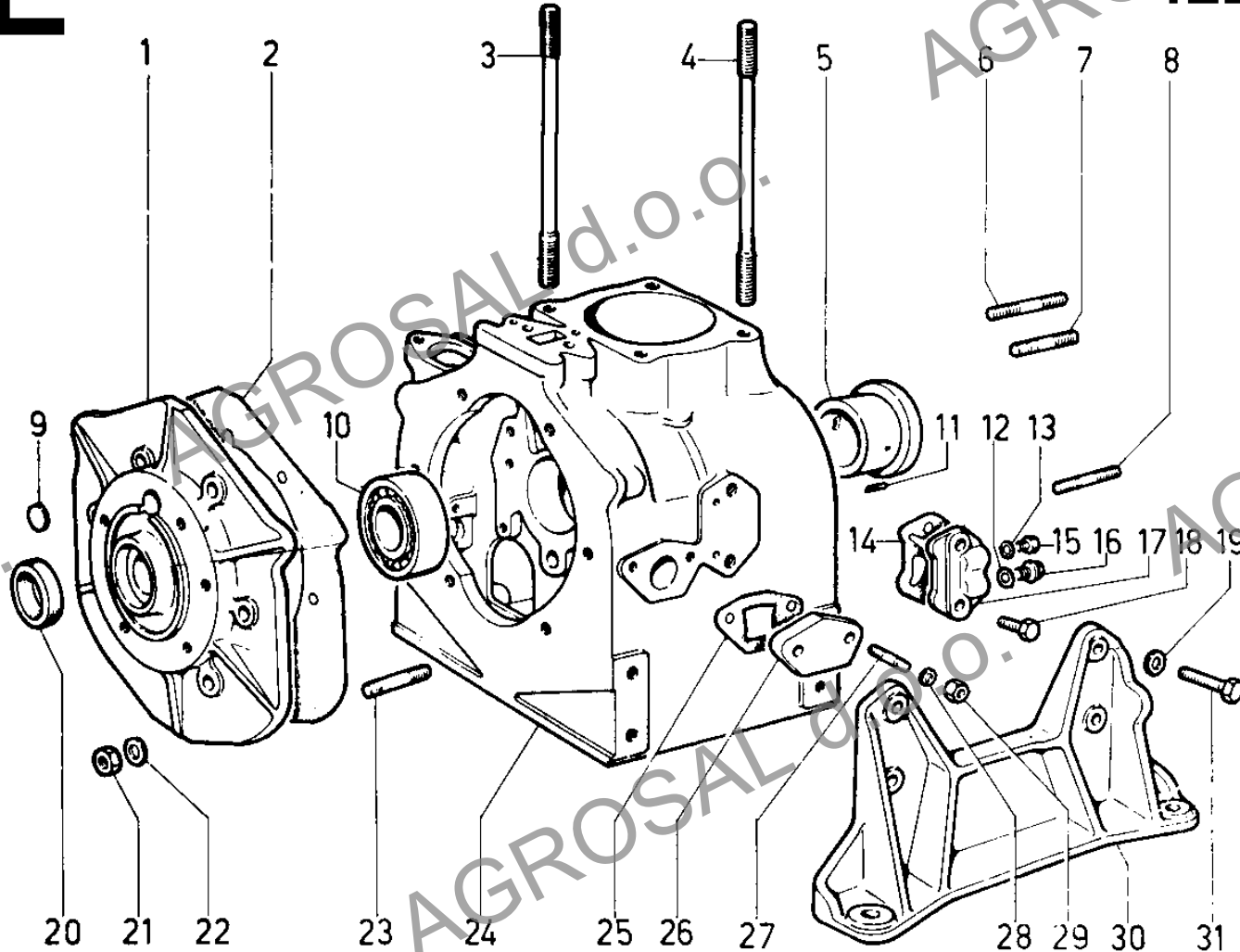


**CRANKCASE/GEAR COVER/MOUNTS**

POS.	CODE	DESCRIPTION	Qty
1	6646.091	GEAR SIDE CASE COVER	1
2	4431.004	gasket 0,40	1
3	6850.024	stud	2
4	6850.040	stud	2
5	1610.009	bearing std. (gear side)	1
5	1610.010	bearing -1,00 (gear side)	1
5	1610.058	bearing -0,50 (gear side)	1
5	1611.225	bearing -0,25 (gear side)	1
6	6800.059	stud M 10 X 30 (39)	1
8	6800.010	stud M 10 X 25 (40)	5
9	8990.008	plug	1
10	3021.029	ball bearing	1
11	8430.055	tapper pin 4 X 12	1
12	4670.060	copper gasket diam.12	1
13	4670.058	copper gasket diam. 8,2X12X1,5	1
14	4730.021	gasket	1
15	1770.001	bolt M 8 X 1,25 X 12	1
16	8965.003	plug M 10	1
17	3901.027	oil flange	1
18	9732.064	screw M 8 X 30	2
19	7565.011	washer diam.10	8
20	1210.031	seal ring	1
21	3240.033	nut M 10	6
22	7565.011	washer diam.10	6
23	6800.053	stud M 10 X 18 (33)	6
24	1511.069	CRANKCASE	1
25	4580.169	gasket 0,40	1
25	4580.170	gasket 0,80	1
26	6700.012	plate	1
27	6780.012	stud M 8 X 25 (37)	2
28	7555.029	washer diam. 8	2
29	3240.018	nut M 8	2
30	6426.010	engine mount	2
31	1780.005	bolt M 10 X 1,5 X 28	8

E

4LD

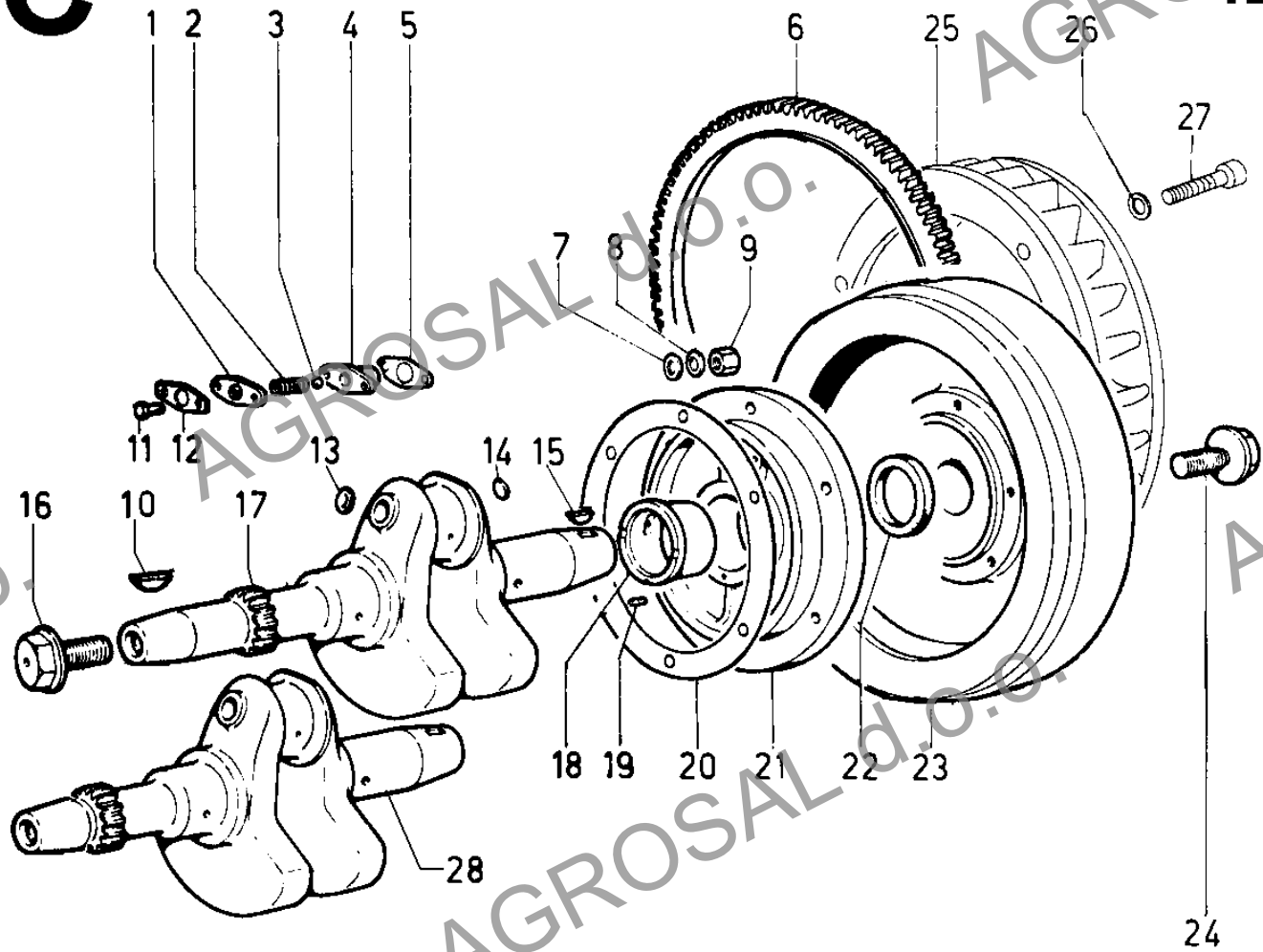


**CRANKSHAFT/FLYWHEEL SIDE CRANKSHAFT SUPPORT/FLYWHEEL**

POS.	CODE	DESCRIPTION	Qty
1	<----->	see Pos. 4 ...	0
3	8245.005	ball	1
4	9680.010	PRESSION VALVE	1
5	4760.007	gasket	1
6	2816.011	crown gear	1
7	7565.011	washer diam.10	6
8	7625.019	washer diam.10	6
9	3240.033	nut M 10	6
10	<----->	key	0
11	1760.003	bolt M 6 X 1 X 12	2
12	<----->	see Pos. C 4 ...	0
13	8990.019	plug	1
14	8990.002	plug	1
15	2280.056	crankshaft wooddruff key	1
16	1862.012	bolt M14	1
17	1051.091	CRANKSHAFT industrial version	1
18	1610.025	bearing std. (flywheel side)	1
18	1610.026	bearing -1,00 (flywheel side)	1
18	1610.057	bearing -0,50 (flywheel side)	1
18	1611.226	bearing -0,25 (flywheel side)	1
19	8430.055	tapper pin 4 X 12	1
20	4700.008	gasket 0,30	1
20	4700.074	gasket 0,10	1
21	8675.067	support	1
22	1210.078	seal ring std.	1
22	1210.083	seal ring -1,00	1
23	9880.723	flywheel std.	1
23	9880.791	FLYWHEEL ASS.Y	1
24	1860.011	bolt	1
25	<----->	fan	0
26	7625.008	washer diam. 6,4	8
27	9730.016	screw M 6 X 35	8
28	1050.005	CRANKSHAFT automotive version	1

C

4LD

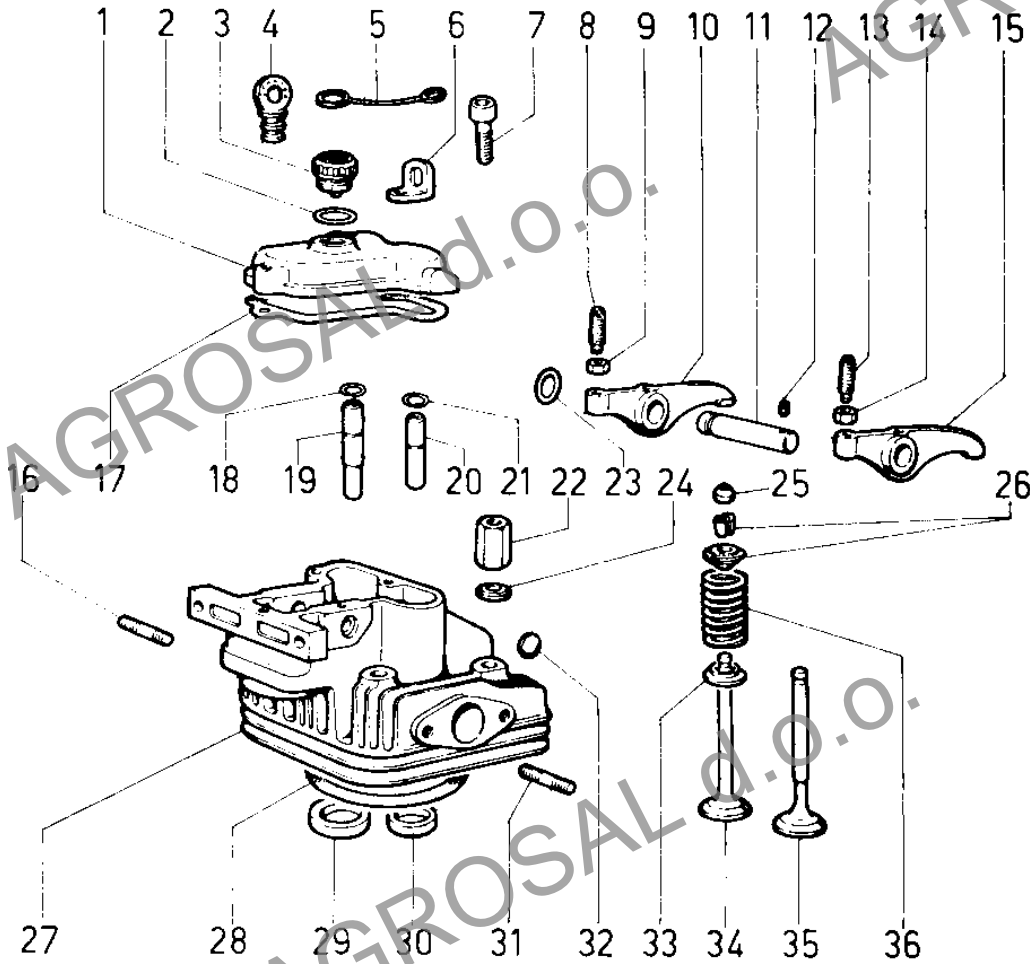


**CYLINDER HEAD/ROCKER ARM BOX/VALVES**

POS.	CODE	DESCRIPTION	Qty
1	2125.069	rocker arm cover	1
2	1200.014	O ring	1
3	9050.050	BREATHER CAP	1
4	9055.003	starter cap	1
5	8695.038	safety wire	1
6	8506.003	engine lifting eye	1
7	9732.063	screw M 8 X 35	2
8	9850.002	rocker arm adjuster	1
9	3240.010	nut M 7	1
1	2125.090	rocker arm cover for compression release	1
10	4330.023	ROCKER ARM ASS.Y	1
11	6045.029	rocker arm shaft	1
12	9765.051	screw M 6 X 1 X 8	1
13	9850.002	rocker arm adjuster	1
14	3240.010	nut M 7	1
15	«-----»	see Pos. 10 ...	0
16	6800.050	stud M 10 X 23 (38)	2
17	4400.007	gasket 0,50	1
18	1160.013	circlip	1
19	4845.158	inlet v.guide std.	1
19	4845.159	inlet v.guide +0,50	1
20	4845.160	eXhaust v.guide std.	1
20	4845.161	eXhaust v.guide +0,50	1
21	1160.013	circlip	1
22	3205.015	nut	4
23	1200.027	rubber oil seal	1
24	7625.227	washer	4
25	2135.067	cap	1
26	6410.018	retainer with half-collets	2
27	9201.003	CYLINDER HEAD ASS.Y	1
27	9201.004	CYLINDER HAED	1
28	4730.107	head gasket 0,70	1
28	4730.108	head gasket 0,80	1
28	4730.109	head gasket 0,90	1
28	4730.110	head gasket 1,00	1
28	4730.111	head gasket 1,10	1
29	8000.046	inlet v.seat	1
30	8000.047	eXhaust v.seat	1
31	6800.050	stud M 10 X 23 (38)	2
32	8990.017	plug	1
33	6410.037	retainer	2
34	9652.019	intake valve	1
35	9685.031	eXhaust valve	1
36	5755.004	valve spring	2

L

4LD





FUEL SYSTEM

POS.	CODE	DESCRIPTION	Qty
1	9043.037	FUEL TANK CAP	1
2	1200.015	O ring 137 for filler oil cap	1
3	8101.070	fuel tank	1
4	7565.007	washer diam. 8	2
5	1770.007	bolt M 8 X 1,25 X 30	2
6	5400.046	rubber sheathing	1
7	7565.007	washer diam. 8	1
8	1770.042	bolt M 8 X 1,25 X 10	1
9	<----->	filler	0
13	7265.008	connection	1
14	3617.016	clamp	1
15	<----->	high press.pipe	0
15a	9370.009	high press.pipe	1
16	<----->	gasket	0
19	6578.013	injection plunger (for injection pump 6590.033 - no longer avai	1
19	6578.205	plunger for rewind starting for injection pump 6590.263	1
20	9672.013	delivery valve	1
21	1200.031	rubber oil seal	1
22	8335.029	washer seal	1
23	7470.003	filler	1
24	5755.034	valve spring	1
25	<----->	bleeding pipe	0
25a	9571.204	bleeding pipe mm 330	1
26	<----->	union	0
26a	7301.155	union	1
27	<----->	gasket	0
29	3240.163	nut M 8	2
30	5575.006	spring	1
31	3930.019	cup	1
32	1200.268	rubber oil seal	1
33	4670.060	copper gasket diam.12	1
34	4760.015	valve gasket	1
35	4670.060	copper gasket diam.12	1
36	1901.031	union bolt M 12	1
37	4775.196	gasket	1
38	1901.171	deaeration plug	1
39	6615.015	nozzle-holder	1
39a	<----->	nozzle-holder Stanadyne - see Pos. F 39	0
40a	6531.425	nozzle	1
41	<----->	locking nut	0
42a	6780.086	stud M 8 X 65 (77)	2
43	2175.009	fuel filter cartridge	1
43	3730.015	FUEL FILTER	1
44	4490.017	gasket	1
45	4430.071	gasket	1
46	3240.018	nut M 8	2
47	7565.007	washer diam. 8	2
48	7625.012	washer diam. 8,4	2
49	3526.082	spacer	2
50	1770.011	bolt M 8 X 1,25 X 40	2
51	9732.074	screw M 8 X 20	3
52	<----->	no longer available	0
54	1580.016	bushing	1

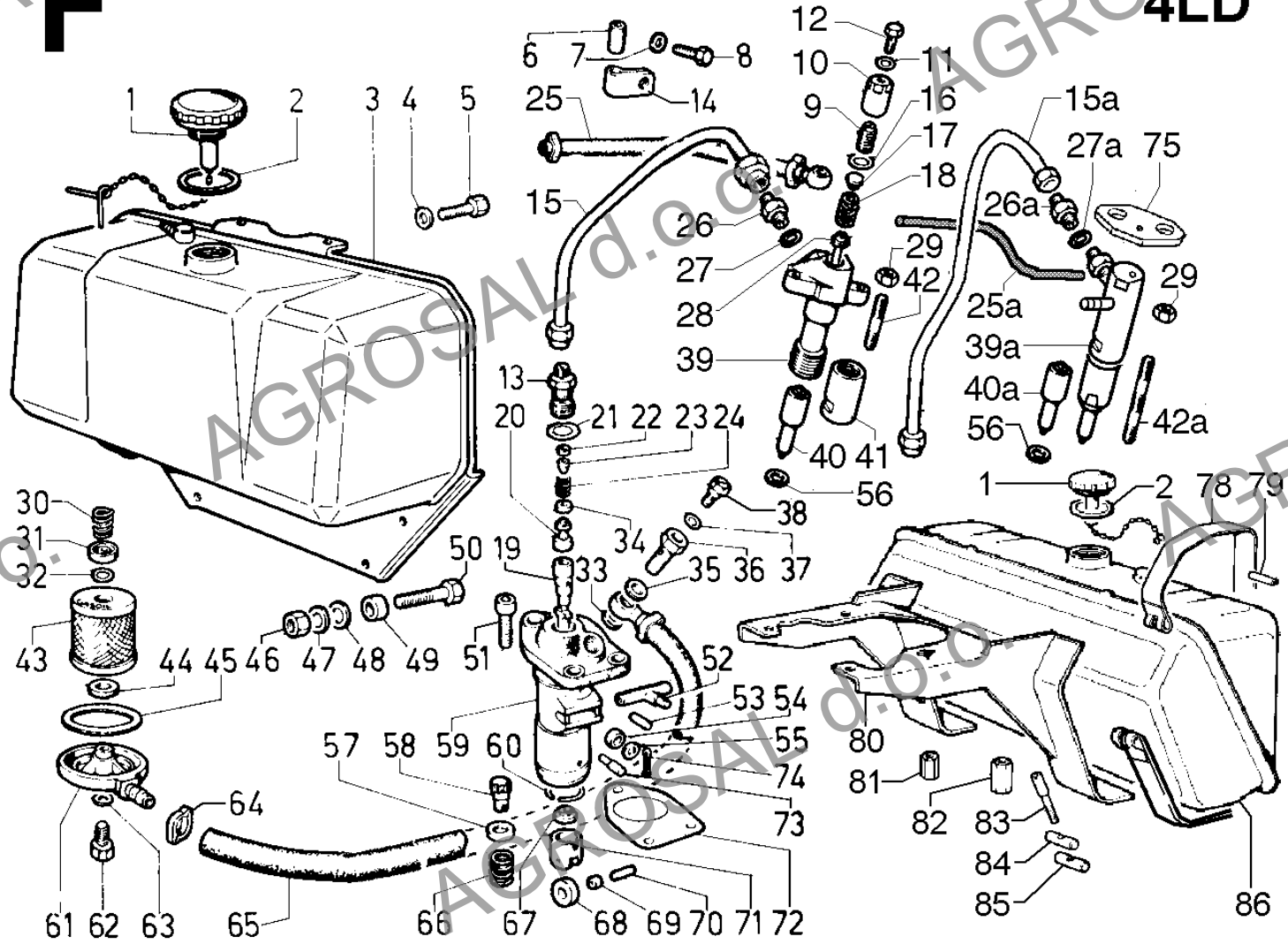
Group: 4LD
Engine: 4LD 640 Drawing: F

FUEL SYSTEM

POS.	CODE	DESCRIPTION	Qty
55	771R.001	washer diam. 5,3	1
56	<----->	copper gasket 1,50	0
56	4670.009	copper gasket 0,50	1
56	4670.010	copper gasket 1,00	1
57	7980.020	cup	1
58	4850.009	guide	1
59	6590.263	INJECTION PUMP	1
60	<----->	ring	0
61	2605.033	filter cover	1
62	1760.162	bolt	1
63	1202.052	rubber oil seal	1
64	3630.008	clamp	1
65	9375.274	hose from gear side tank to inj.pump (mm 142)	1
66	5625.002	spring	1
67	<----->	spring retainer bottom see Pos. F 59	0
70	6230.068	pin	1
71	7215.017	tappet	1
72	4580.001	gasket 0,10	1
72	4580.008	gasket 0,50	1
72	4580.012	gasket 0,30	1
72	4580.039	gasket 0,05	1
73	6230.069	pin	1
74	2800.003	cotter pin	1
75	3790.070	flange	1
78	3615.092	fuel tank clamp	1
79	9600.057	rubber spacer	4
80	8865.053	support	1
81	3206.019	nut	2
83	9732.016	screw M 6 X 40	2
84	1557.019	drilled block	2
85	1557.020	threaded block	2
86	8101.066	fuel tank	1

F

4LD





LOMBARDINI

Group: 4LD

A KOHLER COMPANY

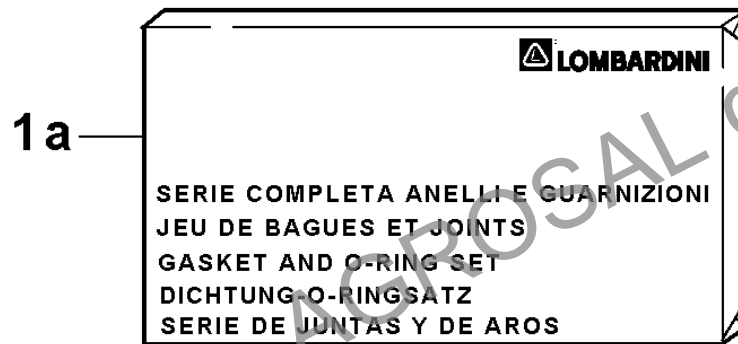
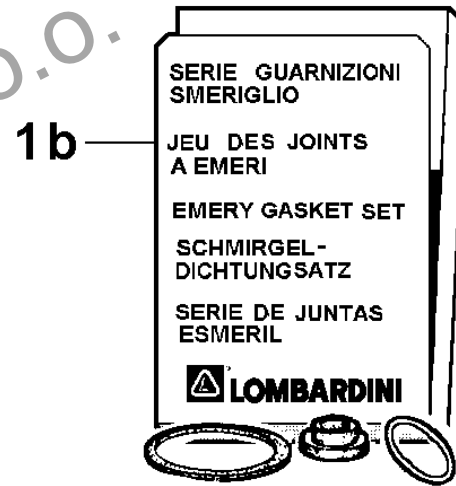
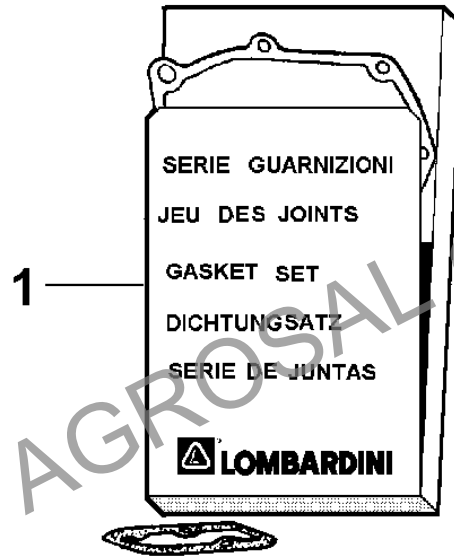
Engine: 4LD 640 Drawing: N

GASKET/RING SET

POS.	CODE	DESCRIPTION	Qty
1	«-----»	GASKET SET - see Pos. N 1a	0
1a	8205.082	RING AND GASKET COMPLETE SET	1
1b	8185.002	EMERY GASKET SET	1

N

4LD

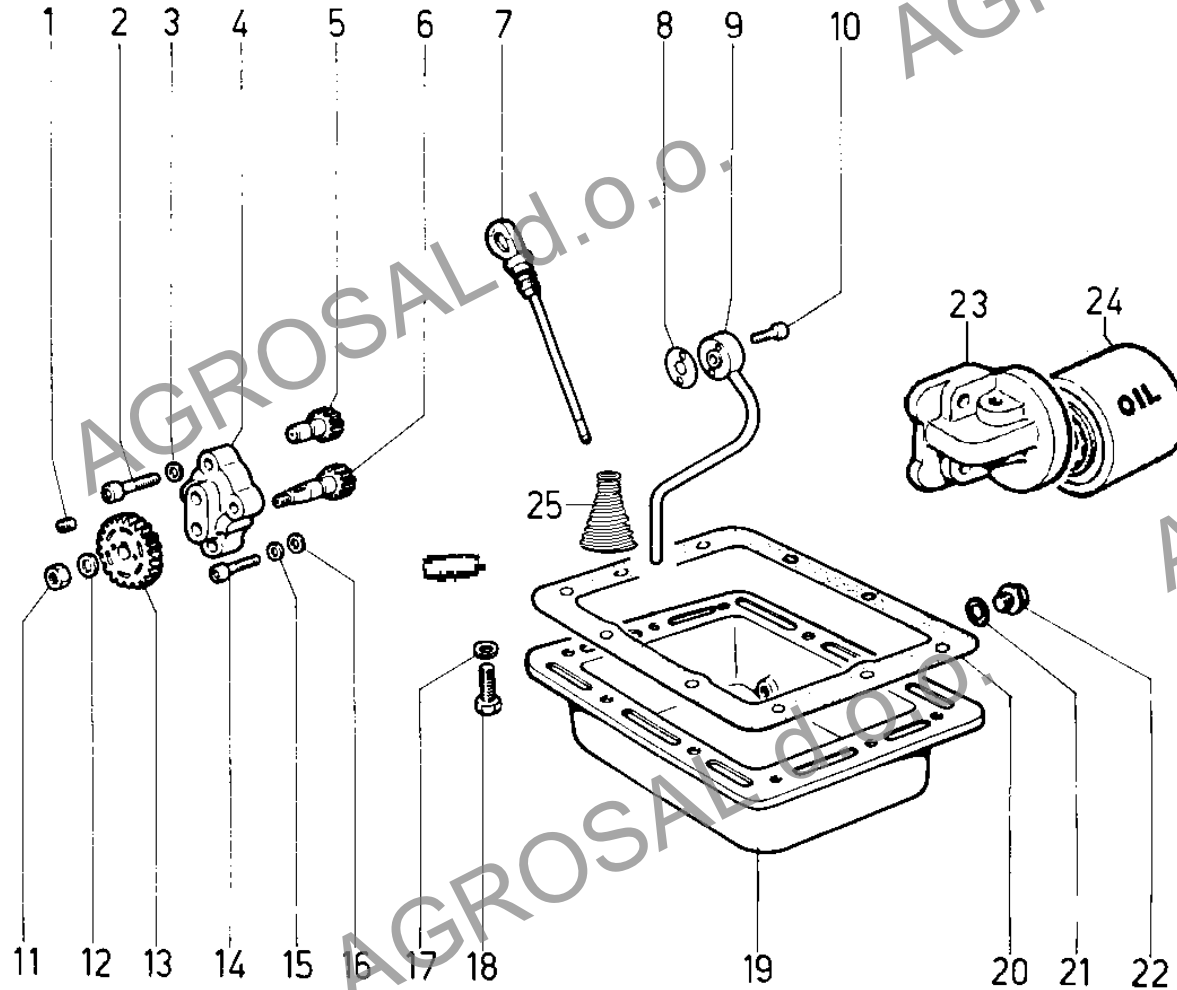


**LUBRICATING SYSTEM**

POS.	CODE	DESCRIPTION	Qty
1	9765.001	screw M 6 X 8	1
2	9730.030	screw M 8 X 35	2
3	7625.010	washer diam. 8	2
4	4336.021	lub.oil pump	1
4	4336.023	lub.oil pump (engine with feed pump)	1
5	«-----»	see Pos. 4 ...	0
7	1400.362	dipstick	1
8	7700.014	washer	1
9	9320.046	pipe	1
10	9730.010	screw M 6 X 16	2
11	3203.014	nut	1
12	7625.010	washer diam. 8	1
13	4975.018	gear	1
14	9730.015	screw M 6 X 30	1
15	7565.004	washer diam. 6	1
16	7625.007	washer diam. 6	1
17	7625.010	washer diam. 8	10
18	1770.002	bolt M 8 X 1,25 X 16	10
19	6645.283	oil pan	1
20	4600.091	gasket	1
21	4670.016	copper gasket diam.14	1
22	9040.020	oil drain plug	1
23	3740.024	EXTERNAL OIL FILTER	1
24	2175.028	oil filter cartridge	1
25	5801.508	oil filter	1

H

4LD





LOMBARDINI

Group: 4LD

A KOHLER COMPANY

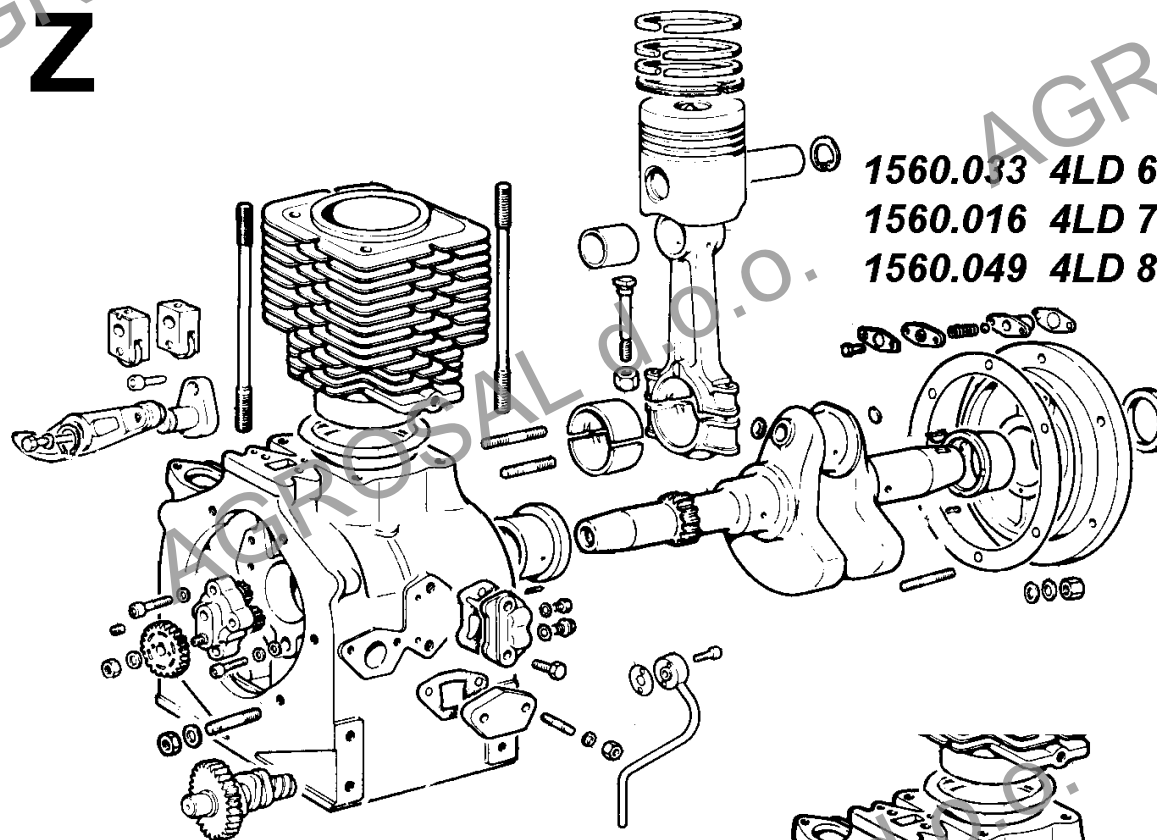
Engine: 4LD 640 Drawing: Z

SHORT BLOCK

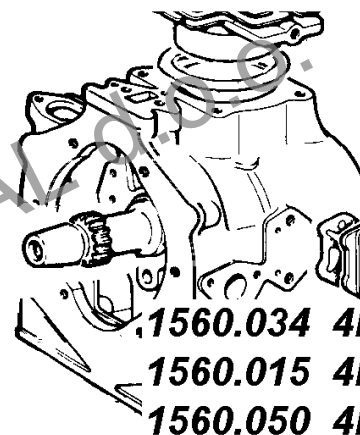
POS.	CODE	DESCRIPTION	Qty
1	1560.033	short block industrial version	1
1	1560.034	short block automotive version	1

Z

4LD



- 1560.033 4LD 640
- 1560.016 4LD 705
- 1560.049 4LD 820



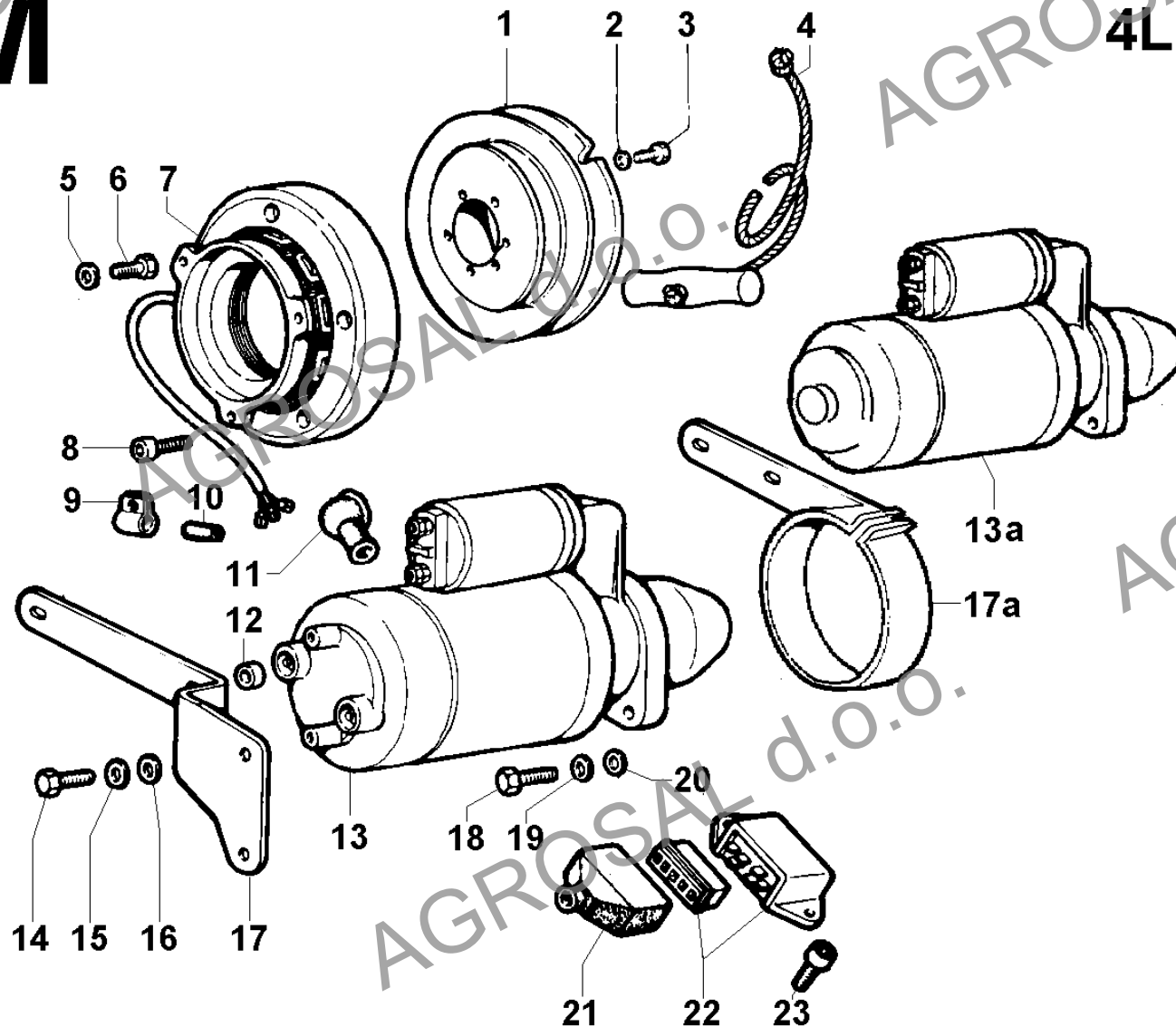
- 1560.034 4LD 640
- 1560.015 4LD 705
- 1560.050 4LD 820

**STARTING**

POS.	CODE	DESCRIPTION	Qty
1	6960.061	start pulley	1
2	7555.029	washer diam. 8	6
3	1770.006	bolt M 8 X 1,25 X 25	6
4	4055.045	rope starting	1
5	7565.004	washer diam. 6	2
6	1760.005	bolt M 6 X 1 X 16	3
7	1157.153	volt.alternator 12V 12A - 3 wires	1
8	9730.015	screw M 6 X 30	5
9	3617.017	clamp	1
10	5400.046	rubber sheathing	1
11	6491.005	pipe elbow	1
12	3526.079	spacer	2
13	5840.260	starting motor Iskra	1
13a	<----->	starting motor Bosch (unified with Pos. M 13)	0
14	1760.032	bolt M 6 X 1 X 14	2
15	7565.004	washer diam. 6	2
16	7625.070	washer diam. 6	2
17	8546.241	bracket	1
17a	<----->	bracket	0
18	1790.025	bolt M 12 X 1,5 X 30	1
19	7565.013	washer diam.12	1
20	7625.026	washer diam.12	1
21	2145.014	regulator cap	1
22	7362.228	voltage regulator. 12V 14/26A-6 contacts for alternator 3 wires	1
23	9731.092	screw M 8 X 14	2

M

4LD





TIMING/SPEED GOVERNOR

POS.	CODE	DESCRIPTION	Qty
1	1165.001	circlip	1
2	<----->	washer diam. 3,25 - see Pos. D 3	0
3	4882.038	YOKE ASS.Y	1
3	5199.008	lever	1
4	5800.015	spring	1
5	<----->	pin - see Pos. D 3	0
6	9520.023	guard tube	1
7	4740.017	gasket	1
8	1410.011	push rod	2
9	8420.012	locating pin	1
10	6140.013	pin	1
11	4840.008	guide	1
12	9730.028	screw M 8 X 1,25 X 30	2
13	4740.017	gasket	1
14	1755.004	bolt M 5 X 0,8 X 18	1
15	6330.061	safety plate	1
16	1557.021	retainer	1
17	5655.005	spring	1
18	9730.312	screw M 6 X 35	1
19	8615.103	support	1
20	1755.002	bolt M 5 X 0,8 X 12	1
21	5655.005	spring	1
22	8245.011	ball	6
23	<----->	yoke - see Pos. D 3	0
24	1165.006	circlip diam. 7	1
25	9800.082	screw M 6 X 35	1
26	9732.092	screw M 8 X 18	1
27	4535.013	gasket	1
29	5168.051	tabwasher	1
30	1750.035	bolt M 4 X 0,7 X 12	2
31	6275.038	plate	1
32	6370.428	safety plate	1
33	1240.006	snap ring	1
34	<----->	washer - no longer avail.	1
35	6130.016	governor shaft	1
36	7625.019	washer diam.10	1
37	3240.033	nut M 10	1
38	4936.168	gear	1
39	2085.029	governor bell	1
40	1770.015	bolt M 8 X 1,25 X 55	1
41	7565.007	washer diam. 8	1
42	1240.013	snap ring	1
43	4330.009	in.pump rocker arm	1
44	6045.009	pin	1
45	4887.002	tappet	1
46	1010.060	camshaft	1
47	4887.001	tappet	1

D

4LD

