

AGROSAL d.o.o.

HONDA

GX340



AGROSAL d.o.o.

Gregorčičeva ulica 38, 5270 Ajdovščina
telefon: 05 368 90 96, fax: 05 368 90 97
e-mail: info@agrosal.si, www.agrosal.si

GENERAL PURPOSE ENGINE

GX340H1

PARTS CATALOGUE

1

FOREWORD INDEX

1

ENGINE GROUP

2

PART NUMBER INDEX

3

PART NAME INDEX

4

Instruction for use of parts catalogue

- **This parts catalogue was prepared based on the latest information available as of July 01, 2008.**
- See the parts catalogue news for any revision that is made after July 01, 2008.
- **Always specify the part number when ordering a part.**
 - Check the model, type, serial numbers, color, maker, and the size as needed before ordering a part.
 - Note that the illustrations (part drawings) can differ from the actual parts in shape. They are given just to help you to refer to the parts.
- **When modifications or additions to this parts catalogue are made, a revised edition will be issued at an appropriate time, with successively progressing revision numbers on the cover. We recommend obtaining such revisions in order to keep your parts catalogue up-to-date at all times. To check whether a parts catalogue revision has been issued, please contact your Honda distributor.**

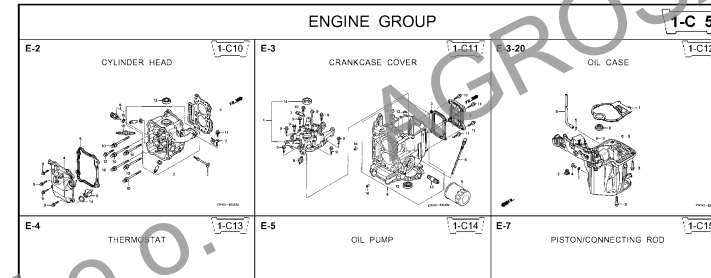
Initial version issue date July 01, 2008
Honda Motor Co., Ltd.

CONTENTS

	Page	Address No.	
● Instruction for use of parts catalogue	1	B 1	1
● How to refer to the part information	2	B 2	
● Part catalogue structure	3	B 3	
● When the parts were revised	4	B 4	
● Abbreviations used in the parts catalogue	4	B 4	
● How to check the part block and serial numbers	5	B 5	
● Models, parts catalogue codes and applicable serial numbers	6	B 6	
● Features of each type	6	B 6	
● Fuel hose, general purpose hoses and vinyl hose	7	B 7	
● FLAT RATE SERVICE TIME	8	B 8	
● Illustrated index	13	B13	
● ENGINE GROUP	15	C 1	2
● PART NO. INDEX	37	E 1	3
● PART NAME INDEX	39	F 1	4

How to refer to the part information

A Reference with "Illustrated index"



B Reference with "Part number index"

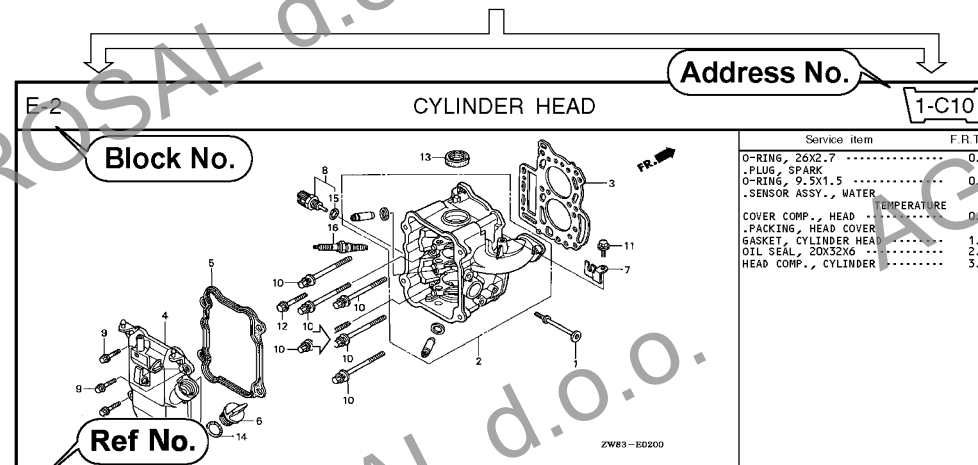
PART NO. INDEX

Part Number	Address	Page	Rel.	Part Number	Address	Page
06000				15212-ZW9-000	1-C14	3C
06316-ZW9-000	1-69	88	1	15220-ZW9-003	1-C14	3C
11000				15332-ZW9-000	1-E8	55
11300-ZW9-405	1-C11	27	1	15332-ZW9-A30	1-E11	5E
11300-ZW9-406	1-C11	27	1	15400-PF8-004	1-C11	27
11340-ZW9-000	1-C11	27	2	15422-ZW9-000	1-C14	3C
11342-ZW9-000	1-C11	27	3	15473-881-000	1-C14	3C
11381-ZW9-003	1-C12	28	1	15474-ZW9-000	1-C14	3C
				15611-921-000	1-C10	2E
				15655-ZW9-000	1-C11	27
12000				16000		
12000-ZW9-405ZA	1-C11	27	4	16010-ZV4-005	1-D4	3E
12155-ZV4-A00	1-C13	29	1	16011-ZV4-005	1-D4	3E
12166-ZW9-000	1-C10	26	1	16013-ZW9-003	1-D4	3E
12209-GB4-681	1-C16	32	1	16016-ZW9-003	1-D4	3E
12210-ZW9-405ZA	1-C10	26	2	16016-ZW9-721	1-D4	3E
12216-ZE2-300	1-E8	55	1	16023-ZW9-003	1-D4	3E
	1-E11	58	1	16024-ZV4-650	1-D4	3E
				16028-ZV4-650	1-D4	3E

C Reference with "Part name index"

PART NAME INDEX

Part name	Address	Page	Ref.
[A]			
ABSORBER , FUEL	1-E15	62	5
ARMATURE COMP.	1-D11	43	7
ARM COMP. , LINK JOINT	1-G6	85	18
ARM COMP. , SHIFT LINK	1-G6	85	14
ARM COMP. , TILT	1-F15	79	20
ARM , FUEL PUMP ROCKER	1-C16	32	4
ARM , REVERSE LOCK	1-F15	79	18
ARM , SHIFT LINK	1-F11	74	7
ARM , STOPPER	1-D1	33	12
ARM , THROTTLE REMOTE	1-F11	74	6
ARM , VALVE ROCKER	1-C16	32	3
[B]			
BAG , TOOL , 160MM	1-G5	84	10
BAND	1-G6	86	37
BAND B1 , WIRE	1-F6	69	1
BAND , CORD	1-F3	67	18
BAND , TUBE CLIP , 11MM	1-E15	65	28
BAND , TUBE CLIP , 12.5MM	1-E15	63	19

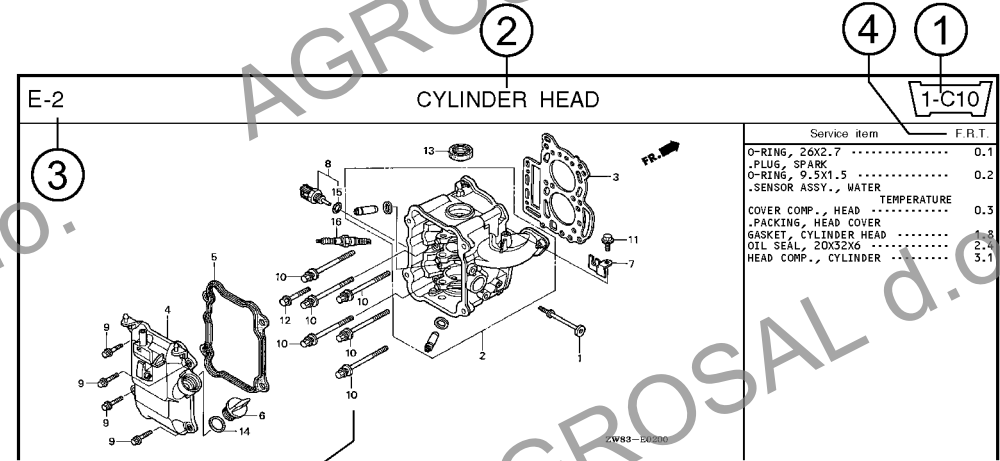


Ref. No.	Part No.	Description	Reqt. QTY						Serial No.	Parts catalogue code
			9901	9901	1001	1001	10B1	10B1		
1	12166-ZW9-000	STOPPER, ENGINE SIDE	2	2	2	2	2			
2	12210-ZW9-000ZA	HEAD COMP., CYLINDER	1	1	1	1	1			
3	12251-ZW9-003	GASKET, CYLINDER HEAD	1	1	1	1	1			
4	12310-ZW9-000	COVER COMP., HEAD	1	1	1	1	1			
5	12312-ZW9-000	PACKING, HEAD COVER	1	1	1	1	1			
6	15611-921-000	CAP, OIL (NO. GAUGE)	1	1	1	1	1			
7	16617-ZW9-000	HOLDER, CABLE	1	1	1	1	1		SC,SG	
	16617-ZW9-010		1	1	1	1	1	1001801	LHC,LHD	
8	35075-ZW5-003	SENSOR ASSY., WATER	1	1	1	1	1			
9	90003-ZW9-000	BOLT, FLANGE, 6X22	4	4	4	4	4			
10	90007-ZW9-003	BOLT, FLANGE, 8X83	6	6	6	6	6			
11	90011-ZW9-000	BOLT, FLANGE, 6X14 (CT200)	1	1	1	1	1			
12	90200-ZW9-000	BOLT, FLANGE, 8X40	2	2	2	2	2			
13	91202-KJ9-003	OIL SEAL, 20X32X6	1	1	1	1	1		1001800 LHC,LHD	
14	91301-805-000	O-RING, 26X2.7	1	1	1	1	1			
15	91307-PK2-005	O-RING, 9.5X1.5 (HONDA KIKAKI)	1	1	1	1	1			
16	98059-55916	PLUG, SPARK (CR5EH-9)	2	2	2	2	2			
	98059-55926	PLUG, SPARK (U16FER9)	2	2	2	2	2			

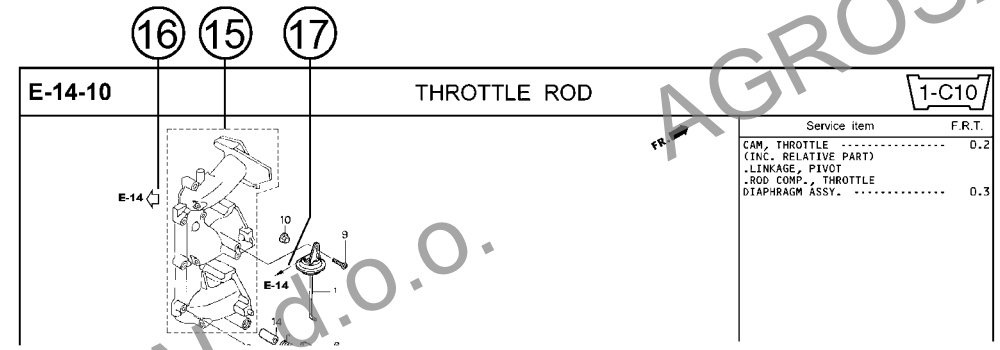
Page No.

2008.09.20 E

Part catalogue structure



Ref. No.	Part No.	Description	Reqd. QTY						Serial No.	Parts catalogue code
			BF 9/9D1	BFP 10D1	BF 10D1	BFP 10B1	BF 10B1	BFP 10B1		
1	12166-ZW9-000	STOPPER, ENGINE SIDE	2	2	2	2	2	2		
2	12210-ZW9-000ZA	HEAD COMP., CYLINDER *NHS* DARK GRAY	1	1	1	1	1	1		
3	1225-ZW9-003	GASKET, CYLINDER HEAD	1	1	1	1	1	1		
4	12310-ZW9-000	COVER COMP., HEAD	1	1	1	1	1	1		
5	12312-ZW9-000	PACKING, HEAD COVER	1	1	1	1	1	1		
6	15611-921-000	CAP, OIL (NO GAUGE)	1	1	1	1	1	1		
7	16617-ZW9-000	HOLDER, CABLE	1	1	1	1	1	1	SC,S6	
	16617-ZW9-010		1	1	1	1	1	1	1001800 LHC,LHD	



- ① **Address number**
 - Address No. is provided (in place of the page No.) to help you refer to the part with the part No. or part name.
- ② **Block title** ③ **Block number**
- ④ **Service item/Flat rate time**
- ⑤ **Reference number**
 - Title number marked with the parenthesis or parentheses indicates that it continues from the previous page.
- ⑥ **Part number** ⑦ **Honda color code**
- ⑧ **Description**
- ⑨ **Assemblies**
 - Sections framed with broken lines in the exploded view drawings are available as complete assemblies. (Their individual parts can also be obtained.)
- ⑩ **Color description**
- ⑪ **Note**
 - Notes are shown with the parentheses in the part name column.
- ⑫ **Required quantity**
 - Required QTY shown in the parenthesis or parentheses indicates the optional part.
 - Required QTY marked with "N" Indicates the optional part that should be selected as needed.
 - Required QTY indicates the number of the part used in the block.
- ⑬ **Serial number**
- ⑭ **Type**
 - When the type column is blank, it indicates that the part is applicable to all types.
 - As the type of the actual unit may differ from the "parts catalogue, type" please refer to "Models, types and applicable serial numbers" for confirmation.
- ⑮ **[Dotted box]**
 - Parts enclosed within a dotted line are covered in a different block.
- ⑯ **[Hollow arrow]**
 - A hollow arrow indicates the block No. for the parts enclosed within a dotted line .
- ⑰ **[Solid arrow]**
 - A solid arrow indicates the block No. the part in question is connected to.

When the parts were revised

Be sure to check the serial number!!



Ref. No.	Part No.	Description	Reqd. QTY						Serial No.
			BF 99D1	BFP 99D1	BF 10D1	BFP 10D1	BF 10B1	BFP 10B1	
1	12166-ZW9-000	STOPPER, ENGINE SIDE	2	2	2	2	2	2	
2	12210-ZW9-000ZA	HEAD COMP., CYLINDER *NHS*	1	1	1	1	1	1	
3	12251-ZW9-003	GASKET, CYLINDER HEAD	1	1	1	1	1	1	
4	12310-ZW9-000	COVER COMP., HEAD	1	1	1	1	1	1	
5	12312-ZW9-000	PACKING, HEAD COVER	1	1	1	1	1	1	
6	15611-921-000	CAP, OIL (NO GAUGE)	1	1	1	1	1	1	
7	16617-ZW9-000	HOLDER, CABLE (###)	1	1	1	1	1	1	
	16617-ZW9-010	1	1	1	1	1	1	

The number has been used from the initial model without revision. When shown at the left side, it is applicable to the models of No.1001801 and the subsequent numbers. When shown at the right side, it is applicable to the models up to No.1001800.

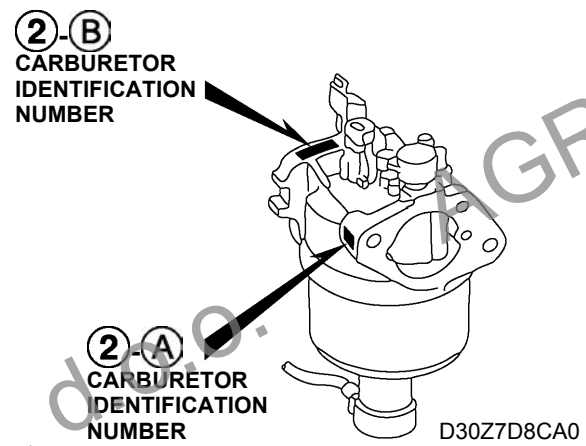
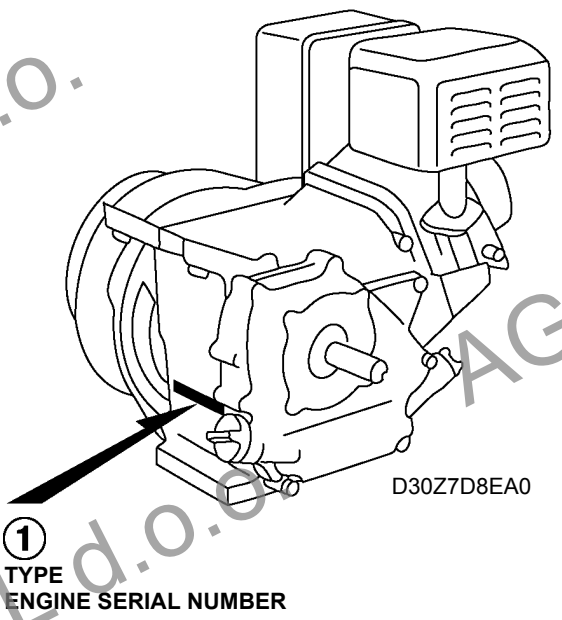
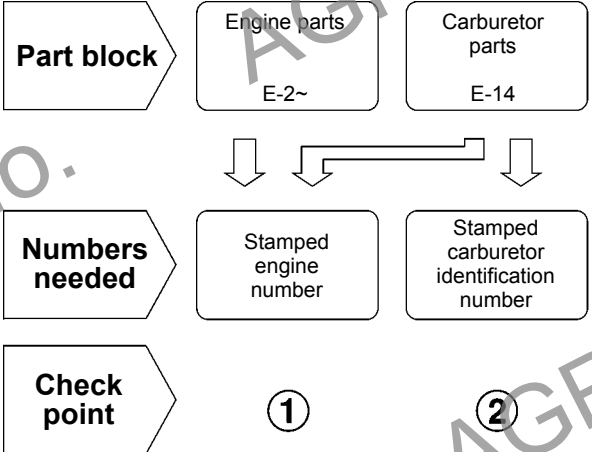
The parts listed with "###" at the end of the parts name have limited supply period (parts not for sale).

Abbreviations used in the parts catalogue

The following abbreviations are used in the parts name column.

- A Ampere
- A.C. Alternating current
- ASSY. Assembly
- AT. Automatic transmission
- C.D.I. Capacitive discharge ignition
- COMP. ... Complete
- D.C. Direct current
- EX. Exhaust
- G.F.C.I ... Ground fault circuit interruptor
- HEX. Hexagonal
- H.S.T. Hydrostatic transmission
- FRFront
- IN.Inlet
- L (100L) .Link (100 Links)
- L.Left
- MMMillimeter
- MT.Manual Transmission
- P.T.O.Power take off
- R.Right
- RR.Rear
- STD.Standard
- T (22T) ...Tooth (22 Teeth)
- V Volt
- WWatt

How to check the part block and serial numbers



Models, parts catalogue codes and applicable serial numbers

- Models, parts catalogue codes and applicable serial Nos. given in this parts catalogue can be identified as follows.

Model	Type	Parts catalogue type	Applicable engine serial No.	Applicable carburetor identification No.
GX340H1	EDS1	EDS1	GCAEH-1000001~	BE82Q A
	EDT1	EDT1		

* Of carburetor identification numbers, only the portions underlined in the example below are used for registration.

BE 82Q A KC ナ
 (A) (B)

Features of each type

- See the following table for the features of each type. (Items in brackets are optional)

Specifications	Model	GX340H1	
	Type	EDS1	EDT1
Starter motor		●	

Fuel hose, general purpose hoses and vinyl hose

- The standard part fuel hose, general purpose hose and vinyl hose may be substituted by the coiled bulk part.
- When ordering the standard part fuel hose, general purpose hose and vinyl hose use the bulk part number written in the parts catalog in brackets () underneath the part name.
- When exchanging the hose, cut and use at the specified length as mentioned in the part name.
(For the method of cutting the bulk part, and method of filling out orders etc., please refer to the instructions issued with the bulk part.)

Bulk part number of fuel hose, general purpose hose and vinyl hose.

Example: 9 5 0 0 1 - 7 5 0 0 1 - 5 0 M

Bulk part number:

Refers to the bulk part.

Marking code (fuel hose and general purpose hose)

Change code (Vinyl hose)

Indicates number mark or change sequence, however, the code for the bulk part must be strictly 0 (zero).

Types of code:

- | | | | | | |
|-------------|--|----------------|--|--------------|---|
| • Fuel hose | 2: Red outside braid
(3 mm inside dia. only) | • General hose | 1: Ash gray
2: Ash gray
3: Black
5: Black | • Vinyl hose | 1: Clear
2: Black
3: Light red
6: Light red
7: Pale black |
| | 5: Black inside braid | | | | |
| | 3: Red (3 mm inside dia. only) | | | | |
| | 4: Ash gray with red stripe
(3 mm inside dia. only) | | | | |
| | 6: Black | | | | |

Lengths:

- 001: 1 m (standard)
003: 3 m
008: 8 m } Application or specification of some parts is not settled.

I.D code: (fuel hose and general purpose hose)

- | | | | | |
|------------|--------------------|--------------------|-----------------------------|-----------------------------|
| 30: 3.0 mm | 50: 5.0 mm | 70: 7.0 mm | 11: 11 mm | 12: 12 (outside dia. 17) mm |
| 35: 3.5 mm | 55: 5.3 mm, 5.5 mm | 75: 7.3 mm, 7.5 mm | 91: 12 (outside dia. 15) mm | 14: 14 mm |
| 45: 4.5 mm | 65: 6.5 mm | 80: 8.0 mm | 92: 12 (outside dia. 16) mm | 17: 17 mm |

ID./OD. code: (vinyl hose)

- | | | | | |
|-------------------------|--------------------------|---------------------------|---------------------------|---------------------------|
| 01: ID. 2.9, OD. 6.8 mm | 12: ID. 5.0, OD. 7.0 mm | 21: ID. 8.0, OD. 9.0 mm | 37: ID. 11.0, OD. 15.0 mm | 50: ID. 16.0, OD. 19.0 mm |
| 03: ID. 3.0, OD. 6.0 mm | 10: ID. 5.0, OD. 8.0 mm | 23: ID. 8.0, OD. 12.0 mm | 38: ID. 12.0, OD. 13.0 mm | 55: ID. 17.5, OD. 20.5 mm |
| 05: ID. 3.5, OD. 6.5 mm | 11: ID. 5.0, OD. 9.0 mm | 25: ID. 9.0, OD. 11.0 mm | 39: ID. 12.0, OD. 14.0 mm | 60: ID. 22.0, OD. 27.0 mm |
| 07: ID. 4.0, OD. 7.0 mm | 14: ID. 6.0, OD. 9.0 mm | 27: ID. 9.0, OD. 13.0 mm | 40: ID. 12.0, OD. 16.0 mm | |
| 08: ID. 4.5, OD. 6.5 mm | 17: ID. 7.0, OD. 9.0 mm | 33: ID. 10.0, OD. 14.0 mm | 43: ID. 13.0, OD. 15.0 mm | |
| 09: ID. 4.5, OD. 8.0 mm | 19: ID. 7.0, OD. 11.0 mm | 36: ID. 11.0, OD. 13.0 mm | 45: ID. 14.0, OD. 18.0 mm | |

Hose type:

- 1: Fuel hose
3: Vinyl hose
5: General hose

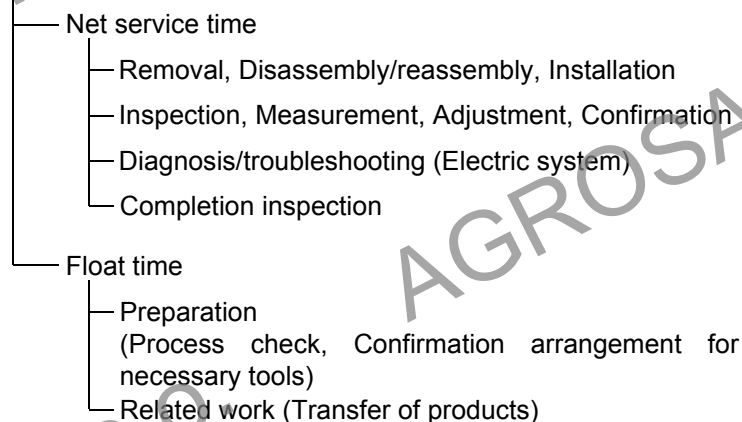
⊙ **CAUTION: It is DANGEROUS to confuse the fuel hose with the general purpose hose or vinyl hose.**

Never use a general purpose hose or vinyl hose in place of a fuel hose or vice versa. Always use the correct bulk part in the parts catalogue, according to the service manual or the instructions issued with the bulk part.

FLAT RATE SERVICE TIME

Flat rate service time (FRT) means the standard time required to service a product, which is listed in this manual to help the dealers control the actual working process and calculate the service charge by using it as a guide.

FRT setting system



* Float time is set by multiplying the net service time by a given coefficient.

Editorial style

The service items shown in the text are listed with the exchange work time for the repair sales parts as the subject. Other representative service items not using repair parts (removal/installation, adjustment, inspection/measuring, and other work) are listed collectively in the list in the preface, classified according to the work.

FRT setting standard

- Decimal system (in unit of 0.1) is adopted to set FRT as it is convenient to calculate the wage.
Example: (0.1) → 6 minutes, (0.2) → 12 minutes
[Labor cost per hour] x [FRT] = [Wage]
- FRT is set with a hand tool.
- Service items and FRT can be subject to change depending on development of tools and service equipment and improvement in service procedure.

Work procedure

- As the work procedure is set with the work time according to the method in the separate Service Manual, refer to this Manual as required.
- Work methods permitting servicing in the shortest time still permitting assurance of safe work and product warranty are used for the setting of service items not listed in the Service Manual.
- Work basically is to be performed by one person, and when two or more people are required, setting is done as the total time for the number of people.
- The set value for the technological level of the workers uses a person with three years of experience in the repair of Honda products as the standard.
- Special tools and service equipment used to set FRT are those specified or recommended in Service Manual.

Service item whose FRT is not presented

- Accessories and service parts that are not listed to use in this manual.
 - Locations with little aging deterioration or breakage during normal use.
 - Service work that can be finished by one touch.
 - Service work that is seldom done (i.e. extremely small causes of trouble and service frequency).
 - Products and parts whose location for installation differs according to its status of use and application.
- * When FRT is not presented, please calculate wages based on appropriate actual work time.

Operation not included of FRT

- Oil and coolant water draining, Waiting time for warming up operation and etc..
- Additional operation that involves removal/installation of standard exterior equipment.
- Indirect time spent for service by visiting the customer, trade-in, and delivery.
- Indirect time required for ordering and delivery of parts.
- Cost for grease, adhesive agent, etc. used for service work.

Explanation of FRT by using an example
(The example may differ from the actual presented items)

Ref. No.	L.O.N.	(Relative ref. Number) Description	F.R.T.
①	1111L1	(1, 3, 4, 7) VALVE, INTAKE4.1	②
③	1111L1A	• NOTE: OHV type • Includes: Engine removal and installation One head (intake all) add1.4	⑤

- ① Reference No. of the illustration of part that shows location of the replacement work.
- ② FRT is an abbreviation of Flat Rate Time indicating the standard service time required for the replacement.
- ③ LON is an abbreviation of Labor Operation Number, and it is a classification of the service items by the work unit code.

The same operation code is used regardless of the models.

Standard operation is indicated with 6 digits code, and additional operation is indicated with 7 digits code.

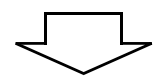
- ④ Indicating the intake valve replacement and FRT4.1.
- ⑤ Indicating FRT1.4 that will be added when additional operation (whole intake side of one cylinder head) is done in association with intake valve replacement.

- ⑥ Indicating work condition or application condition of the service item.
- ⑦ Indicating work contents that are included in the service item.
- ⑧ Indicating a reference No. whose operation and time are the same as FRT4.1 for the intake valve.

(The application range is limited to the service items without an LON setting within a same block.)

How to refer to the service item by using the sample
(intake valve replacement)

Open to the page of the block where the intake valve's spare part illustration is shown.



Look for the intake valve illustration, and refer to the service item and FRT that agree with the reference No.

Indication mark for the listing of service items that continues to the following page

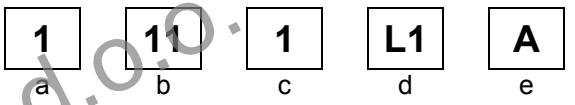
Ref. No.	L.O.N.	(Relative ref. Number) Description	F.R.T.
2	1111L1	VALVE, INTAKE	4.1
	.	.	.
	.	.	.

— Mark indicated at the last line.

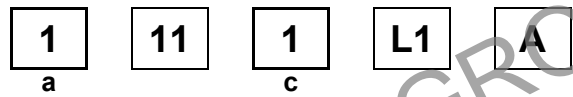
Indication of the block with no setting of FRT

Ref. No.	L.O.N.	(Relative ref. Number) Description	F.R.T.
NO INFORMATION			

• LON code system



- a) Category code..... Engine
- b) Location/function code..... Engine upper
- c) Operation code..... Replace
- d) Operation sequence number (Unit code can be shown with alphabet)
 - Intake valve
 - (No regular rule of code)
- e) Additional code..... One head (intake all)
 - (No regular rule of code)



a) Category codes and classification

Code	Category
1	Engine
2	Power drive
3	Fuel & Exhaust
4	Frame & Body
5	Steering
6	Electrical
7	Axle & Brake
8	Control system
9	-
0	Attachments

c) Operation codes and classification

Code	Operation category
1	Replace, Removal/Installation, Change
2	Overhaul
3	Adjust, Rotation
4	(Paint-related work: Top-coat)
5	Test, Inspect/diagnose, Measurement
6	(Overhaul-related work: Rebore)
7	(Overhaul-related work: Reseal)
8	(Resurface)
9	(Paint-related work: Refinish)
0	Repair, Cleaning, Air bleeding

Major service items without using spare parts

- (1) Removal/Installation, (2) Adjustment,
(3) Inspection/Measurement, (4) Overhaul, (5) Other work

E: Engine, T: Transmission, D: Drive system,
B: Body and related parts

(1) Removal/Installation

Set with the parts configuration in the status of being removed from the product.

	LON	DESCRIPTION	FRT
E	1111L3	CYLINDER HEAD ASSEMBLY-REMOVAL/INSTALLATION	0.5

(2) Adjustment

	LON	DESCRIPTION	FRT
E	1113A1	VALVE CLEARANCE-ADJUSTMENT NOTE: For 1 product	0.3
	1163A0	CONTROL, THROTTLE/GOVERNOR-ADJUSTMENT	0.2
	3113A2	CARBURETOR IDLE-ADJUSTMENT	0.2

(3) Inspection, Measurement, Cleaning

	LON	DESCRIPTION	FRT
E	1105A0	ENGINE OIL-INSPECTION	0.1
	3120A0	AIR CLEANER-CLEANING INCLUDES: Air cleaner-inspection	0.2
	3130A0	SPARK ARRESTER-CLEANING INCLUDES: Spark arrester-inspection	0.1
	6140A0	SPARK PLUG-ADJUSTMENT/CLEANING INCLUDES: Spark plug check NOTE: For 1 product	0.1

(4) Overhaul

Work condition: The required Measurements, inspections, adjustments, and cleaning/washing of each part are performed, including the main body removal/installation work and the replacement of defective parts.

	LON	DESCRIPTION	FRT
E	3112A0	CARBURETOR-OVERHAUL INCLUDES: All necessary adjustment	0.6

(5) Other work

	LON	DESCRIPTION	FRT
E	1101E1	ENGINE OIL-CHANGE INCLUDES: Engine oil-inspection	0.2

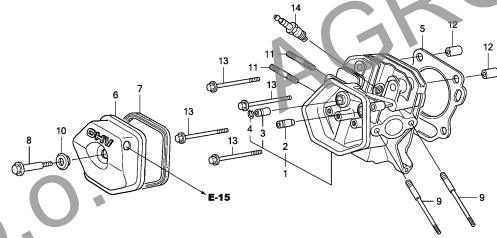
ENGINE GROUP

B13

E-2

CYLINDER HEAD

C 1

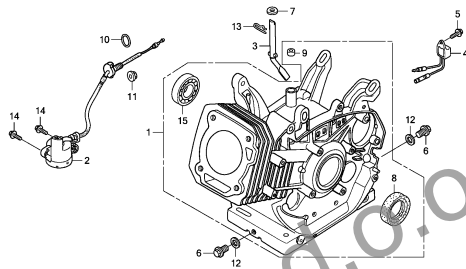


Z700E0200

E-3

CYLINDER BARREL

C 2

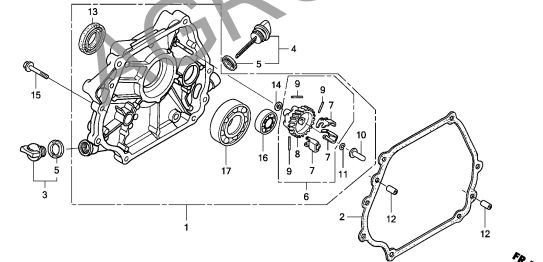


Z700E0300

E-6

CRANKCASE COVER

C 3

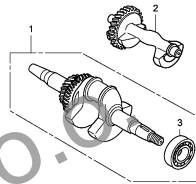


Z700E0600

E-7

CRANKSHAFT

C 4

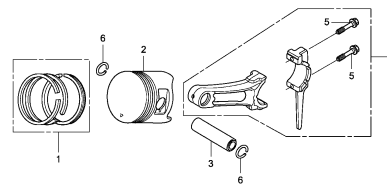


Z700E0700

E-8

PISTON

C 5

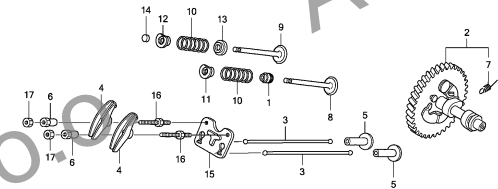


Z700E0800

E-9

CAMSHAFT

C 6

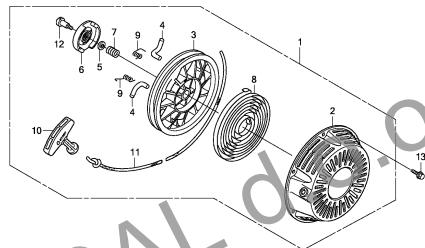


Z700E0900

E-11

RECOIL STARTER

C 9

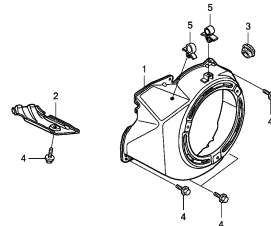


Z700E1100

E-12

FAN COVER

C10

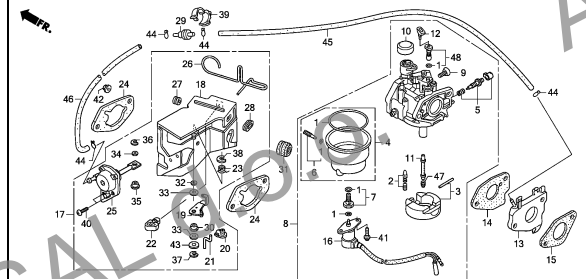


Z700E1200

E-14

CARBURETOR

C11



Z700E1400

2

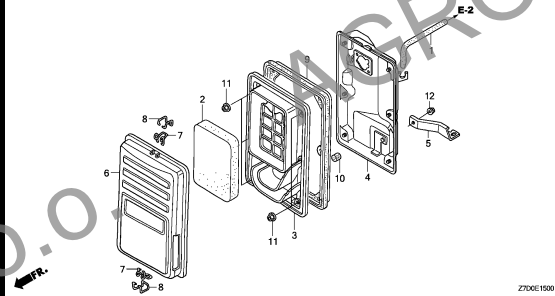
ENGINE GROUP

B14

E-15

AIR CLEANER

C13

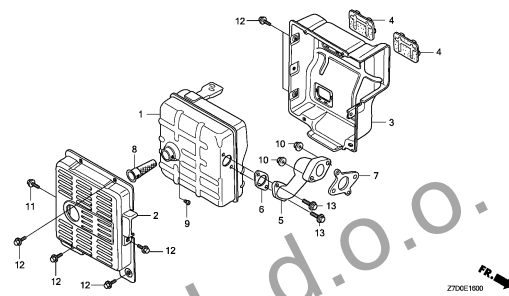


Z700E1500

E-16

MUFFLER

C14

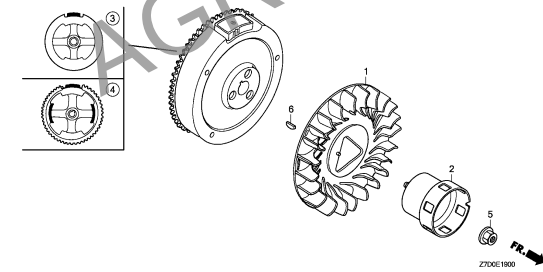


Z700E1600

E-19

FLYWHEEL

C15

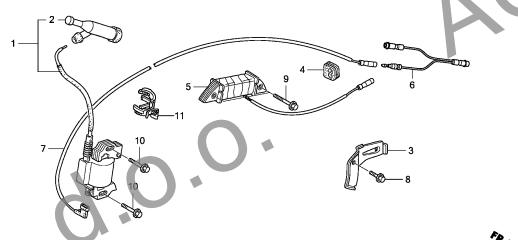


Z700E1900

E-20

IGNITION COIL

C16

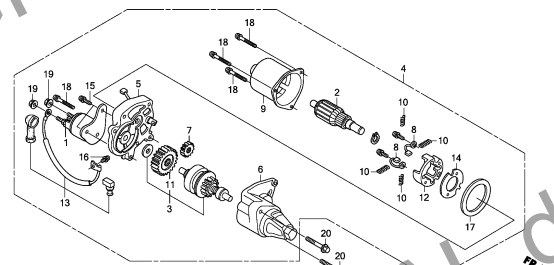


Z700E2000

E-21

STARTER MOTOR

D 1

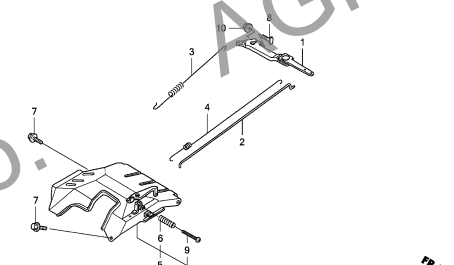


Z700E2100

E-22

CONTROL

D 2

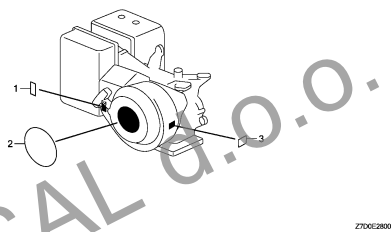


Z700E2200

E-28

LABEL

D 3

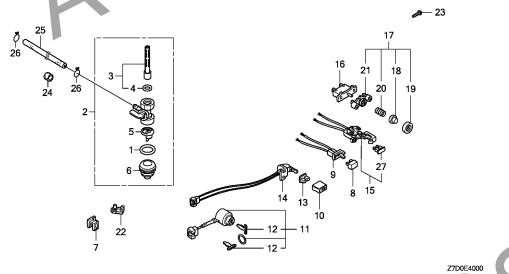


Z700E2800

E-40

OTHER PARTS(1)

D 4

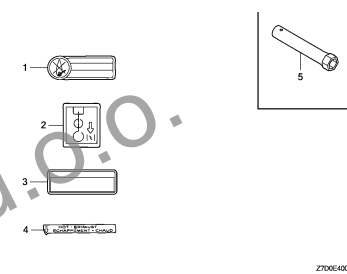


Z700E4000

E-40-1

OTHER PARTS(2)

D 6



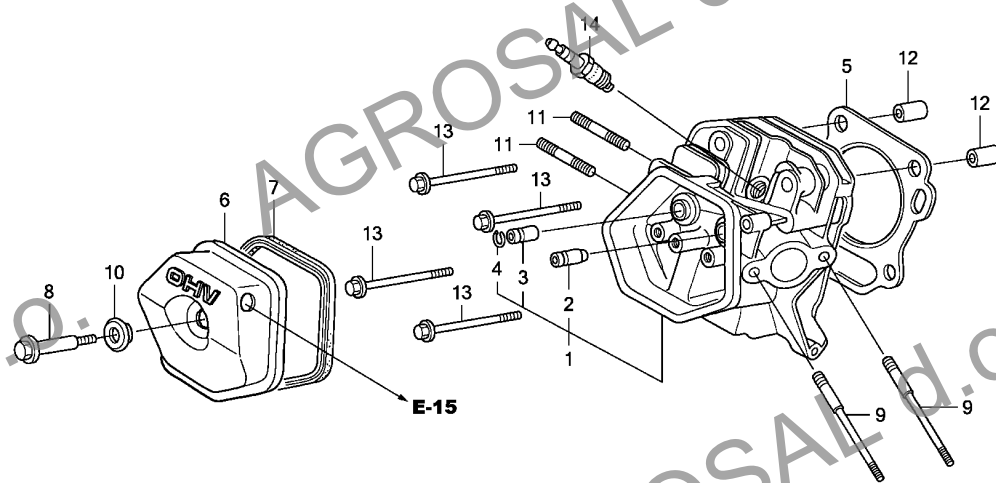
Z700E40-1

2

E-2

CYLINDER HEAD

C 1



Ref. No.	L.O.N.	(Relative ref. Number) Description	F.R.T.
1	1111N3	HEAD, CYLINDERINCLUDES: Valve clearance adjustment and reface	0.9
2	1111E9	GUIDE, INTAKE VALVEINCLUDES: Valve clearance adjustment	0.8
	1111E9E	.Replace intake and exhaust all add	0.2
3	1111E8	GUIDE, EXHAUST VALVEINCLUDES: Valve clearance adjustment	0.8
	1111E8E	.Replace intake and exhaust all add	0.2
5	1111N4	GASKET, CYLINDER HEAD	0.5
6	1111D5	COVER, CYLINDER HEAD AND/OR PACKING, HEAD COVER	0.1
14	6141C1	PLUG, SPARKINCLUDES: Spark plug check	0.1

Z7D0E0200

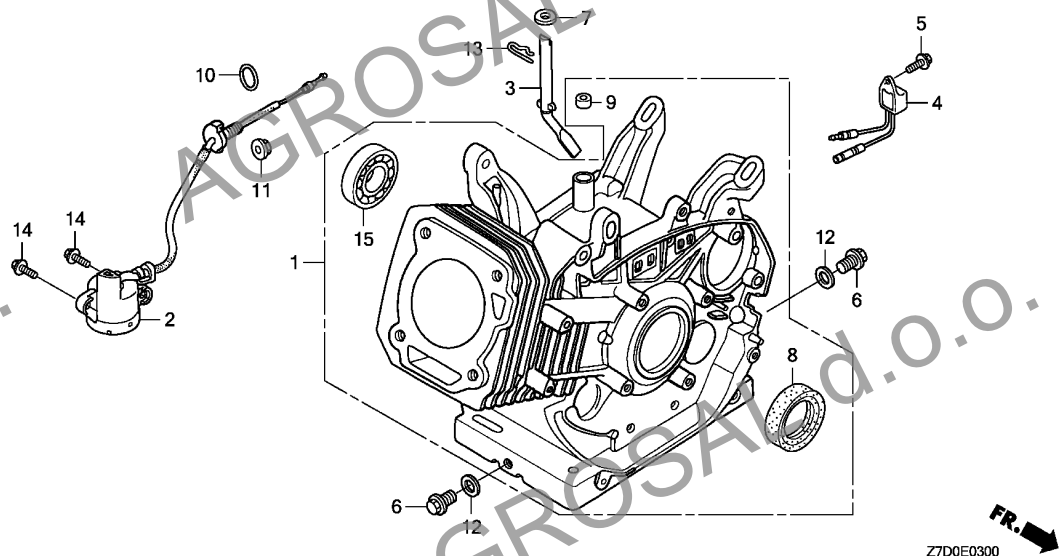
Ref. No.	Part No.	Description	Reqd. QTY	Serial No.	Parts catalogue code
			GX 340 H1		
1	12200-ZF6-406	HEAD COMP., CYLINDER	1		
2	12204-ZE2-306	GUIDE, IN. VALVE (O.S.)	1		
3	12205-ZE2-305	GUIDE, EX. VALVE (O.S.)	1		
4	12216-ZE2-300	CLIP, VALVE GUIDE	1		
5	12251-ZE3-W00	GASKET, CYLINDER HEAD	1		
6	12310-ZE2-020	COVER COMP., HEAD	1		
7	12391-ZE2-020	PACKING, HEAD COVER	1		
8	90014-ZE2-000	BOLT, HEAD COVER	1		
9	90042-ZE3-700	BOLT, STUD, 8X106	2		
10	90441-ZE2-010	WASHER COMP., HEAD COVER	1		
11	92900-08032-0E	BOLT, STUD, 8X32	2		
12	94301-12200	DOWEL PIN, 12X20	2		
13	95701-10080-00	BOLT, FLANGE, 10X80	4		
14	98079-55846	PLUG, SPARK (BPR5ES)(NGK) ...	1		
	98079-55855	PLUG, SPARK (W16EPR-U)(DENSO)	1		

2

E-3

CYLINDER BARREL

C 2



Ref. No.	L.O.N.	(Relative ref. Number) Description	F.R.T.
1	1101A0	BARREL, CYLINDER (10)	1.8
2	6151E8	SWITCH, OIL LEVEL	0.5
3	1161B4	SHAFT, GOVERNOR ARM	0.9
4	6151A0	ALERT UNIT, ENGINE OIL	0.1
8	1101E4	OIL SEAL, CRANKSHAFT :FRONT	1.8
9	1101C4	OIL SEAL, GOVERNOR ARM SHAFT	0.9
12	1101D5	WASHER, DRAIN PLUG	0.1
15	1101F4	BEARING, BALANCER WEIGHT :FRONT	1.9

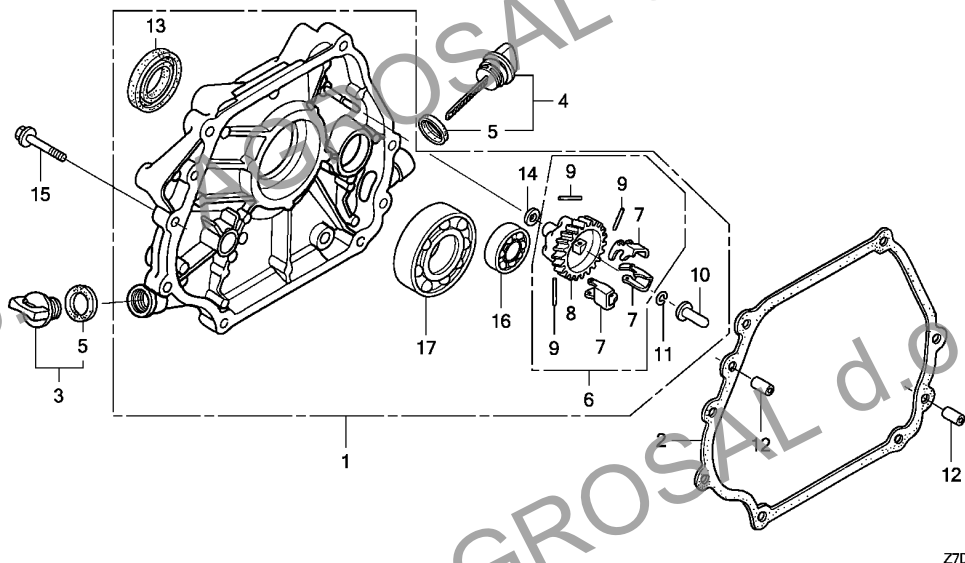
Ref. No.	Part No.	Description	Reqd. QTY	Serial No.	Parts catalogue code
			GX 340 H1		
1	12000-ZE3-416	BARREL ASSY., CYLINDER (ALERT)	1	----- EDT1	
	12000-ZE3-417	BARREL ASSY., CYLINDER (SELFSTARTER+ALERT)	1	----- EDS1	
2	15510-ZE2-053	SWITCH ASSY., OIL LEVEL	1		
3	16541-Z7E-000	SHAFT, GOVERNOR ARM	1		
4	34150-ZH7-013	ALERT UNIT, OIL	1		
5	90013-883-000	BOLT, FLANGE, 6X12(CT200)	1		
6	90131-883-000	BOLT, DRAIN PLUG, 12X15	2		
7	90446-Z7E-000	WASHER, 8.2X17X0.8	1		
8	91201-Z7E-003	OIL SEAL, 35X52X8	1		
9	91203-Z7E-003	OIL SEAL, 8X14X5	1		
10	91353-671-004	O-RING, 14MM(NOK)	1		
11	94050-10000	NUT, FLANGE, 10MM	1		
12	94109-12000	WASHER, DRAIN PLUG, 12MM	2		
13	94251-10000	PIN, LOCK, 10MM	1		
14	95701-06012-00	BOLT, FLANGE, 6X12	2		
15	96100-62020-00	BEARING, RADIAL BALL, 6202	1		

2

E-6

CRANKCASE COVER

C 3



Ref. No.	L.O.N.	(Relative ref. Number) Description	F.R.T.
1	1101F1	COVER, CRANKCASE	0.2
2	1101E9	PACKING, CRANKCASE COVER	0.2
8		(7,9)	
	1161A7	HOLDER, GOVERNOR WEIGHT	0.3
10	1161B6	SLIDER, GOVERNOR	0.3
13	1101E5	OIL SEAL, CRANKSHAFT :REAR ...	0.3
16	1101F5	BEARING, BALANCER WEIGHT :REAR	0.4
17	1101A6	BEARING, CRANKSHAFT :REAR	0.4

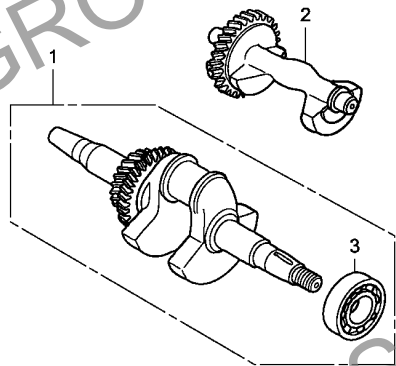
Ref. No.	Part No.	Description	Reqd. QTY		Serial No.	Parts catalogue code
			GX	H1		
1	11300-Z7E-000	COVER ASSY., CRANKCASE	1			
2	11381-ZE3-801	PACKING, CASE COVER	1			
3	15600-ZG4-003	CAP ASSY., OIL FILLER	1			
4	15600-735-003	CAP ASSY., OIL FILLER	1			
5	15625-ZE1-003	PACKING, OIL FILLER CAP	2			
6	16510-Z7E-000	GOVERNOR ASSY.	1			
7	16511-ZE8-000	WEIGHT, GOVERNOR	3			
8	16512-Z7E-000	HOLDER, GOVERNOR WEIGHT	1			
9	16513-ZE2-000	PIN, GOVERNOR WEIGHT	3			
10	16531-Z0A-000	SLIDER, GOVERNOR	1			
11	90602-ZE1-000	CLIP, GOVERNOR HOLDER	1			
12	90701-Z7E-000	DOWEL PIN, 8X12	2			
13	91201-Z7E-003	OIL SEAL, 35X52X8	1			
14	94101-06800	WASHER, PLAIN, 6MM	1			
15	95701-08040-00	BOLT, FLANGE, 8X40	7			
16	96100-62020-00	BEARING, RADIAL BALL, 6202 ..	1			
17	96100-62070-00	BEARING, RADIAL BALL, 6207 ..	1			

2

E-7

CRANKSHAFT

C 4



Z7D0E0700

Ref. No.	L.O.N.	(Relative ref. Number) Description	F.R.T.
1	1101F0	CRANKSHAFT	1.1
2	1101D8	WEIGHT, BALANCER	0.3
3	1101A4	BEARING, CRANKSHAFT :FRONT ...	1.3

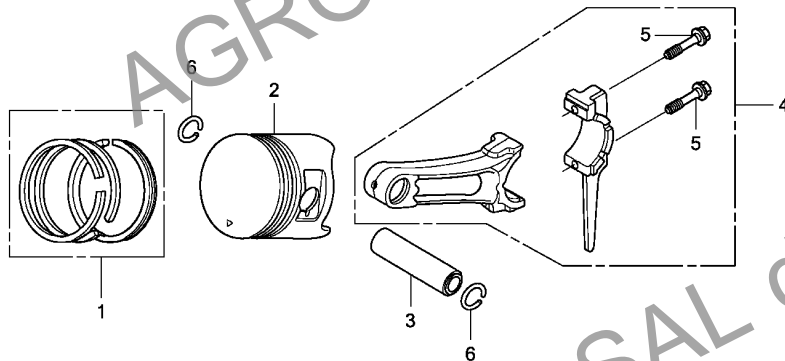
Ref. No.	Part No.	Description	Reqd. QTY	Serial No.	Parts catalogue code
			GX 340 H1		
1	13310-Z7D-700	CRANKSHAFT COMP.	1		
2	13351-Z7E-000	WEIGHT, BALANCER	1		
3	96100-62070-00	BEARING, RADIAL BALL, 6207 ..	1		

2

E-8

PISTON

C 5



FR. →
Z7D0E0800

Ref. No.	L.O.N.	(Relative ref. Number) Description	F.R.T.
2		(1,3,4)	
1111R1		PISTON AND/OR RING SET AND/OR BEARING AND/OR ROD INCLUDES: Inspection/ Measurement/Cleaning	1.2

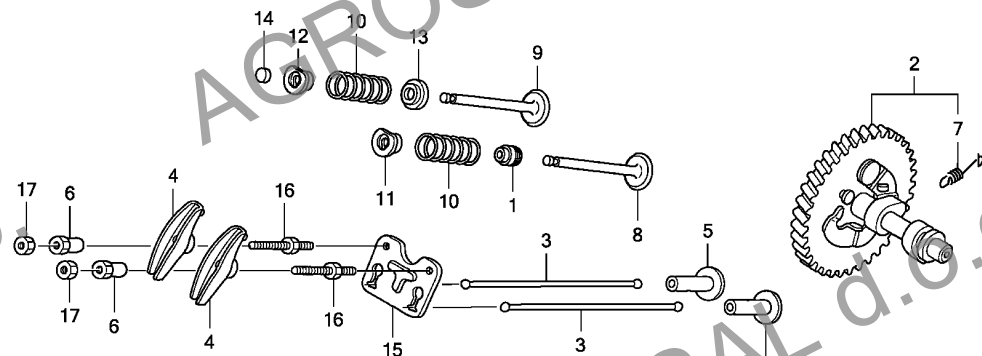
Ref. No.	Part No.	Description	Reqd. QTY	Serial No.	Parts catalogue code
			GX 340 H1		
1	13010-Z5L-004	RING SET, PISTON (STD.)	1		
		(TEIKOKU)			
	13011-Z5L-004	RING SET, PISTON (0.25)	(1)		
		(TEIKOKU)			
	13012-Z5L-004	RING SET, PISTON (0.50)	(1)		
		(TEIKOKU)			
	13013-Z5L-004	RING SET, PISTON (0.75)	(1)		
		(TEIKOKU)			
2	13101-Z7D-800	PISTON (STD.)	1		
	13102-Z7D-800	PISTON (0.25)	(1)		
	13103-Z7D-800	PISTON (0.50)	(1)		
	13104-Z7D-800	PISTON (0.75)	(1)		
3	13111-Z7D-000	PIN, PISTON	1		
4	13200-Z1C-000	ROD ASSY., CONNECTING (STD.)	1		
5	90001-ZE8-000	BOLT, CONNECTING ROD	2		
6	90601-ZE3-000	CLIP, PISTON PIN, 20MM	2		

2

E-9

CAMSHAFT

C 6



FR. →
Z7D0E0900

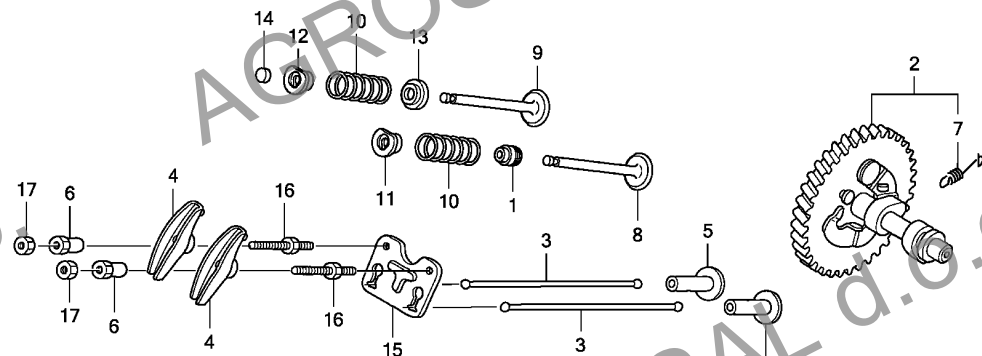
Ref. No.	L.O.N.	(Relative ref. Number) Description	F.R.T.
1	1111K2	SEAL, INTAKE VALVE STEM	0.6
2	1111C2	CAMSHAFT	0.4
		.INCLUDES: Valve clearance adjustment	
3	1111L6	ROD, PUSH :INTAKE	0.2
		.INCLUDES: Valve clearance adjustment	
	1111L6A	.Replace exhaust push rod add	0.1
	1111L7	ROD, PUSH :EXHAUST	0.2
		.INCLUDES: Valve clearance adjustment	
	1111L7A	.Replace intake push rod add	0.1
4	1111A2	ARM, ROCKER :INTAKE	0.2
		.INCLUDES: Valve clearance adjustment	
	1111A2A	.Replace exhaust rocker arm add	0.1
	1111A1	ARM, ROCKER :EXHAUST	0.2
		.INCLUDES: Valve clearance adjustment	
	1111A1A	.Replace intake rocker arm add	0.1
5	1111L9	LIFTER, VALVE :INTAKE	0.4
		.INCLUDES: Valve clearance adjustment	
		.NOTE: Same time for two units	

Ref. No.	Part No.	Description	Reqd. QTY	Serial No.	Parts catalogue code
			GX 340 H1		
1	12209-Z7E-003	SEAL, VALVE STEM	1		
2	14100-ZE3-020	CAMSHAFT ASSY.	1		
3	14410-Z7E-000	ROD, PUSH	2		
4	14431-ZE2-010	ARM, VALVE ROCKER	2		
5	14441-Z7E-000	LIFTER, VALVE	2		
6	14451-Z7E-000	PIVOT, ROCKER ARM	2		
7	14568-ZE1-000	SPRING, WEIGHT RETURN	1		
8	14711-Z7E-000	VALVE, IN.	1		
9	14721-Z7E-800	VALVE, EX. (STELLITE)	1		
10	14751-Z7E-000	SPRING, VALVE	2		
11	14771-ZE2-000	RETAINER, IN. VALVE SPRING	1		
12	14773-ZE2-000	RETAINER, EX. VALVE SPRING	1		
13	14775-ZE2-010	SEAT, VALVE SPRING	1		
14	14781-Z7E-000	ROTATOR, VALVE	1		
15	14791-Z7E-000	GUIDE, PUSH ROD	1		
16	90012-ZE0-010	BOLT, PIVOT, 8MM	2		
17	90206-ZE1-000	NUT, PIVOT ADJUSTING	2		

E-9

CAMSHAFT

C 7



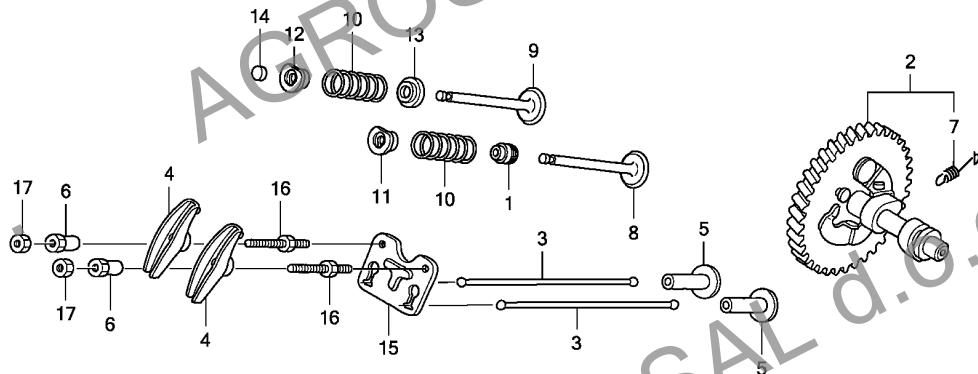
Ref. No.	L.O.N.	(Relative ref. Number) Description	F.R.T.
+ 5	1111M0	LIFTER, VALVE :EXHAUSTINCLUDES: Valve clearance adjustment .NOTE: Same time for two units	0.4
8	1111L1	VALVE, INTAKEINCLUDES: Valve clearance adjustment and reface	0.7
	1111L1E	.Replace intake and exhaust all add	0.1
9	1111L0	VALVE, EXHAUSTINCLUDES: Valve clearance adjustment and reface	0.7
	1111L0E	.Replace intake and exhaust all add	0.1
10	1111P3	SPRING, VALVE :INTAKEINCLUDES: Valve clearance adjustment	0.6
	1111P3A	.Replace intake and exhaust all add	0.1
	1111P4	SPRING, VALVE :EXHAUSTINCLUDES: Valve clearance adjustment	0.6
	1111P4A	.Replace intake and exhaust all add	0.1
+14	1111J7	ROTATOR, VALVE	0.2

2

E-9

CAMSHAFT

C 8



Ref. No.	L.O.N. (Relative ref. Number)	Description	F.R.T.
----------	-------------------------------	-------------	--------

+14 .INCLUDES: Valve clearance adjustment

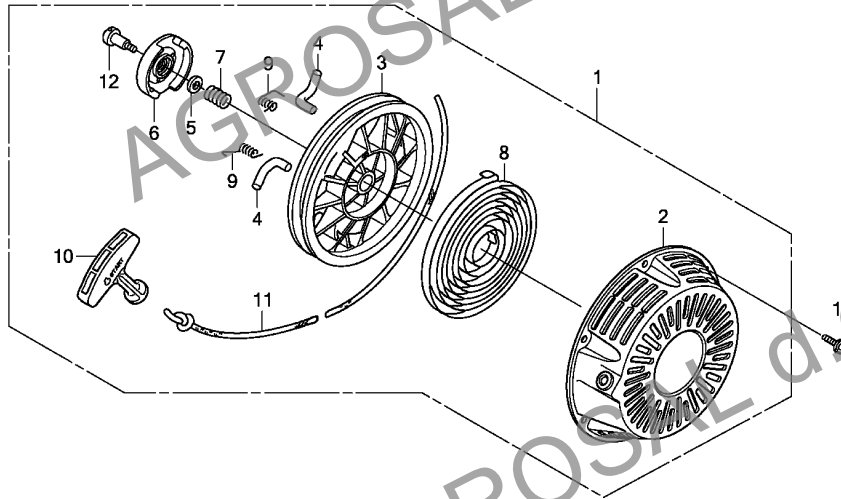
Z7D0E0900

2

E-11

RECOIL STARTER

C 9



Z7D0E1100

Ref. No.	L.O.N.	(Relative ref. Number) Description	F.R.T.
1	1121B9	STARTER, RECOIL	0.1
3	1121B1	REEL, RECOIL STARTER	0.3
4		(9)	
4	1121B0	RATCHET, STARTER AND/OR	
		SPRING, RATCHET	0.2
		.NOTE: Same time for two units	
6		(7)	
6	1121A4	GUIDE, RATCHET	0.2
8	1121B7	SPRING, RECOIL STARTER RETURN	0.3
10	1121A3	GRIP, RECOIL STARTER	0.1
11	1121B3	ROPE, RECOIL STARTER	0.3

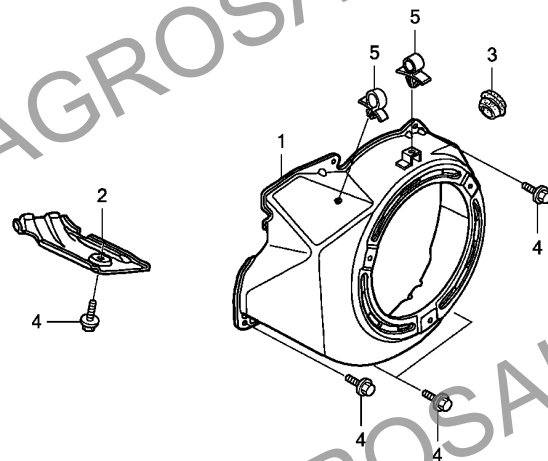
Ref. No.	Part No.	Description	Reqd. QTY	Serial No.	Parts catalogue code
			GX 340 H1		
1	28400-Z7E-003ZB	STARTER ASSY., RECOIL	1		
2	28410-Z7E-003ZB	CASE COMP., RECOIL STARTER	1		
		R280.....POWER RED	1		
3	28420-Z7E-003	REEL, RECOIL STARTER	1		
4	28422-ZH8-801	RATCHET, STARTER	2		
5	28431-ZH8-801	PLATE, FRICTION	1		
6	28433-Z2E-003	GUIDE, RATCHET	1		
7	28441-Z2E-003	SPRING, FRICTION	1		
8	28442-Z7E-003	SPRING, RECOIL STARTER	1		
9	28443-ZH8-801	SPRING, RETURN	2		
10	28461-Z2E-003	KNOB, RECOIL STARTER	1		
11	28462-Z2E-003	ROPE, RECOIL STARTER	1		
12	90003-ZH8-801	SCREW, SETTING	1		
13	90008-ZE2-003	BOLT, FLANGE, 6X10	3		

2

E-12

FAN COVER

C10



Ref. No.	L.O.N. (Relative ref. Number)	Description	F.R.T.
----------	-------------------------------	-------------	--------

1	1141G8	COVER, ENGINE COOLING FAN	0.2
---	--------	---------------------------------	-----

Ref. No.	Part No.	Description	Reqd. QTY	Serial No.	Parts catalogue code
			GX		
			340		
			H1		

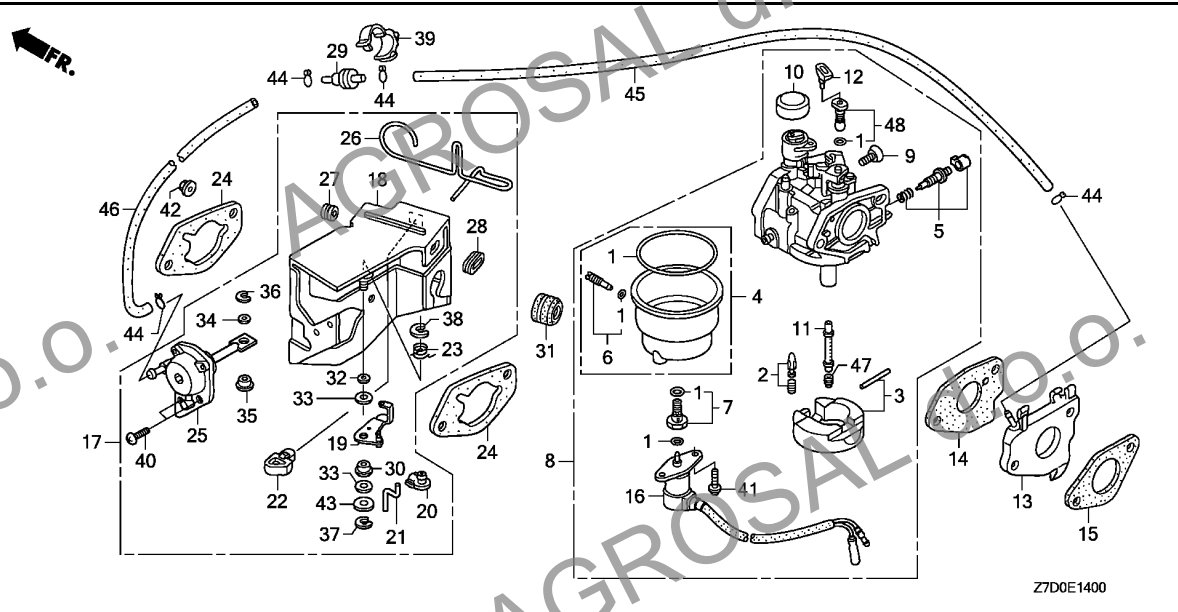
1	19610-Z7E-800ZB	COVER COMP., FAN			
		R280.....POWER RED	1		
2	19631-ZE3-W00	SHROUD	1		
3	81329-567-020	GROMMET, DRAIN HOLE	1		
4	90013-883-000	BOLT, FLANGE, 6X12(CT200) ...	6		
5	90654-SA4-003	CLIP, WIRE HARNESS, 6MM(WHITE)	2		

2

E-14

CARBURETOR

C11



Ref. No.	L.O.N.	(Relative ref. Number) Description	F.R.T.
1	3111B1	GASKET SET, CARBURETOR	0.4
2	3111E1	VALVE SET, FLOAT AND/OR FLOAT SET	0.4
4	3111A3	CHAMBER SET, FLOAT AND/OR GASKET, FLOAT CHAMBER	0.3
5	3111D7	SCREW SET, PILOT	0.2
8	3111F3	CARBURETOR	0.3
13	3111C0	(15) INSULATOR, CARBURETOR AND/OR PACKING, INSULATOR	0.3
14	3111C8	PACKING, CARBURETOR	0.3
16	6211C0	VALVE, CARBURETOR SOLENOID ..	0.2
17	8101R1	STAY, MANUAL CHOKE	0.3
21	8101J8	ROD, CARBURETOR CHOKE	0.2
24	3121D9	PACKING, AIR CLEANER	0.3
.NOTE: Same time for two units			
25	3111A7	DIAPHRAGM, CARBURETOR	0.3
29	311175	VALVE, DASHPOT CHECK	0.1
47	3111C3	JET, MAIN	0.4

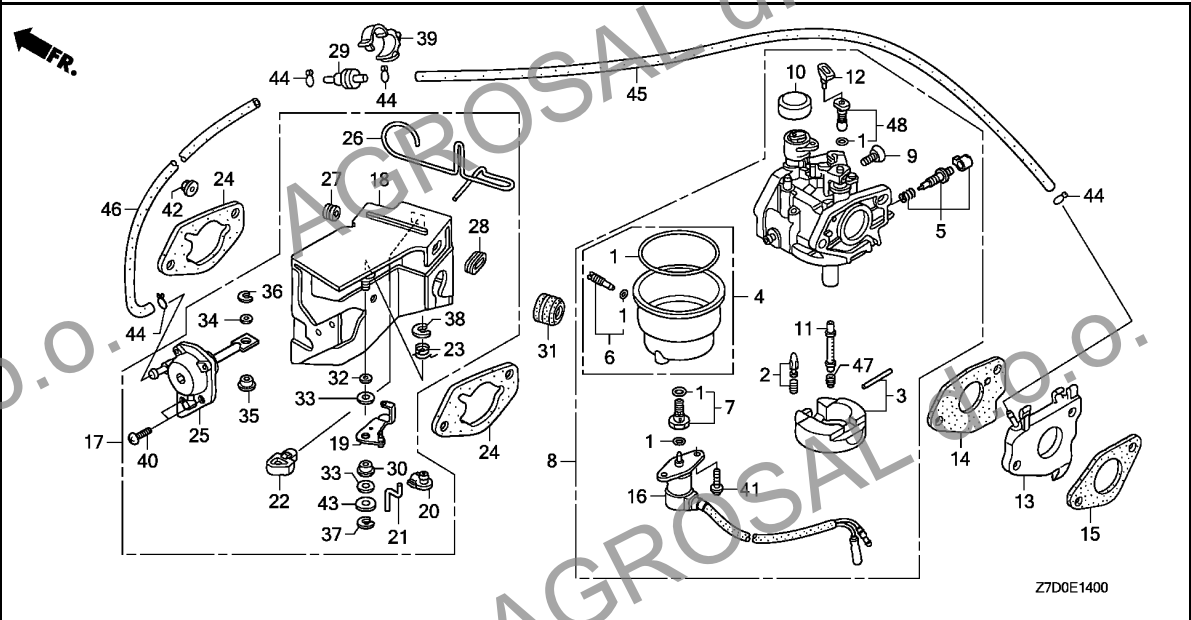
Ref. No.	Part No.	Description	Reqd. QTY	Serial No.	Parts catalogue code
			GX 340 H1		
1	16010-ZE3-701	GASKET SET	1		
2	16011-ZA0-931	VALVE SET, FLOAT	1		
3	16013-Z1C-003	FLOAT SET	1		
4	16015-ZA0-951	CHAMBER SET, FLOAT	1		
5	16016-ZH7-W01	SCREW SET, PILOT	1		
6	16024-124-760	SCREW SET, DRAIN	1		
7	16028-ZA0-931	SCREW SET	1		
8	16100-Z7D-D11	CARBURETOR ASSY. (BE82Q A) ..	1		
9	16124-ZE0-005	SCREW, THROTTLE STOP	1		
10	16148-141-881	CAP, CHOKE DUST	1		
11	16166-ZE3-F10	NOZZLE, MAIN	1		
12	16172-ZE3-W10	COLLAR, SETTING	1		
13	16211-Z7D-700	INSULATOR, CARBURETOR	1		
14	16221-ZE3-800	PACKING, CARBURETOR	1		
15	16223-ZE3-800	PACKING, INSULATOR	1		
16	16230-ZE3-702	VALVE ASSY., SOLENOID	1		
17	16260-Z7E-800	STAY ASSY., MANUAL CHOKE	1		
18	16261-ZE2-702	STAY COMP., SOLENOID	1		
19	16262-ZE2-711	LEVER, CHOKE	1		
20	16263-Z7B-000	JOINT, ROD	1		
21	16264-ZE2-701	ROD, CHOKE	1		
22	16265-Z7E-000	STOPPER, CHOKE ROD	1		
23	16268-ZE2-721	SPRING, MANUAL CHOKE	1		
24	16269-ZA0-800	PACKING, AIR CLEANER	2		
25	16400-ZE2-704	DIAPHRAGM ASSY.	1		



E-14

CARBURETOR

C12



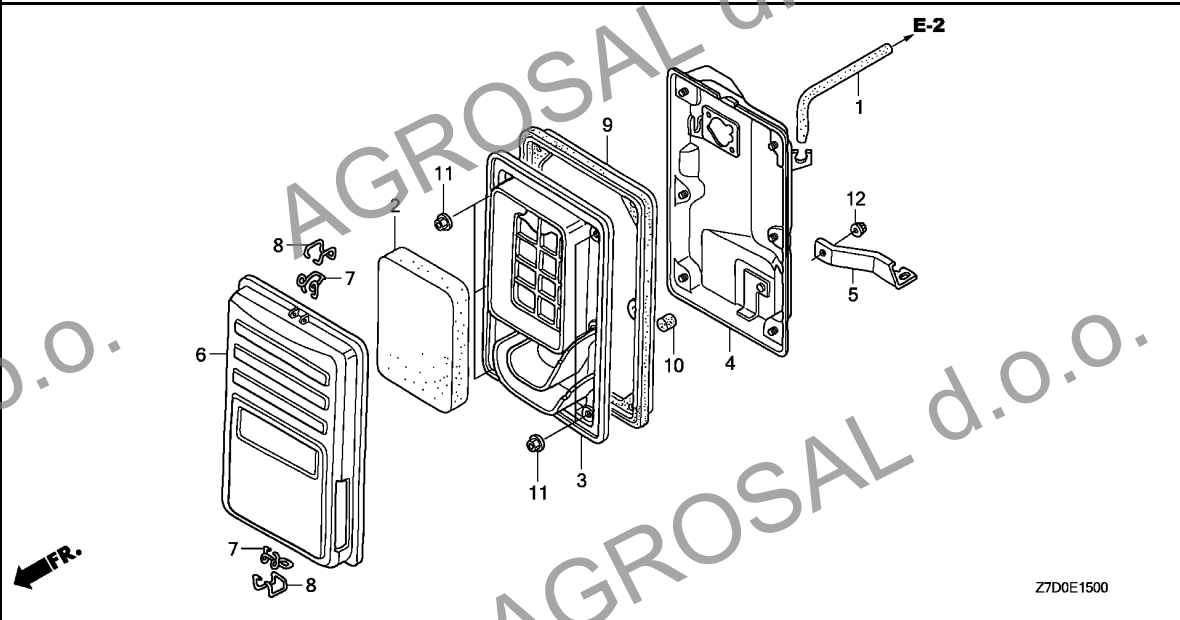
Z7D0E1400

Ref. No.	Part No.	Description	Reqd. QTY		Serial No.	Parts catalogue code
			GX	H1		
26	16611-ZE2-711	ROD, CHOKE CONTROL	1			
27	16613-893-000	GROMMET, CHOKE ROD	1			
28	16615-893-000	GUIDE, CHOKE ROD	1			
29	36135-ZF6-D41	VALVE, DASHPOT CHECK	1			
30	53149-964-003	BUSH, ARM PIVOT	1			
31	88911-MJ3-000	GROMMET, FENDER	1			
32	90431-ZE2-700	WASHER, CHOKE LEVER	1			
33	90432-ZE2-700	SEAL, CHOKE LEVER	2			
34	90433-ZE2-700	WASHER, THRUST, 2.7X8	1			
35	90434-ZE2-700	COLLAR, LEVER	1			
36	90601-Z7E-000	E-RING, 2MM	1			
37	90602-Z7E-000	E-RING, 4MM	1			
38	90603-Z7E-000	E-RING, 7MM	1			
39	90650-SD9-003	CLIP, WIRE HARNESS	1			
40	93500-05012-0A	SCREW, PAN, 5X12	2			
41	93892-05012-18	SCREW-WASHER, 5X12	2			
42	94050-06000	NUT, FLANGE, 6MM	2			
43	94103-05000	WASHER, PLAIN, 5MM	1			
44	95002-02070	CLIP, TUBE (B7)	4			
45	95005-35075-10	TUBE, 3.5X75 (95005-35001-10M)	1			
46	95005-35130-10	TUBE, 3.5X130 (95005-35001-10M)	1			
47	99101-ZH8-0950	JET, MAIN, #95	(1)			
	99101-ZH8-0980	JET, MAIN, #98	(1)			
	99101-ZH8-1000	JET, MAIN, #100	1			
48	99204-ZE0-0350	JET SET, PILOT, #35	1			

E-15

AIR CLEANER

C13



Ref. No.	L.O.N.	(Relative ref. Number) Description	F.R.T.
1	1111K5	TUBE, BREATHER	0.1
2	3121B8	ELEMENT, AIR CLEANER	0.1
.INCLUDES: Air cleaner-inspection			
3	3121F0	SEPARATOR, AIR CLEANER	0.1
4	3121A5	CASE, AIR CLEANER	0.2
9	3121E8	SEAL, AIR CLEANER CASE	0.1

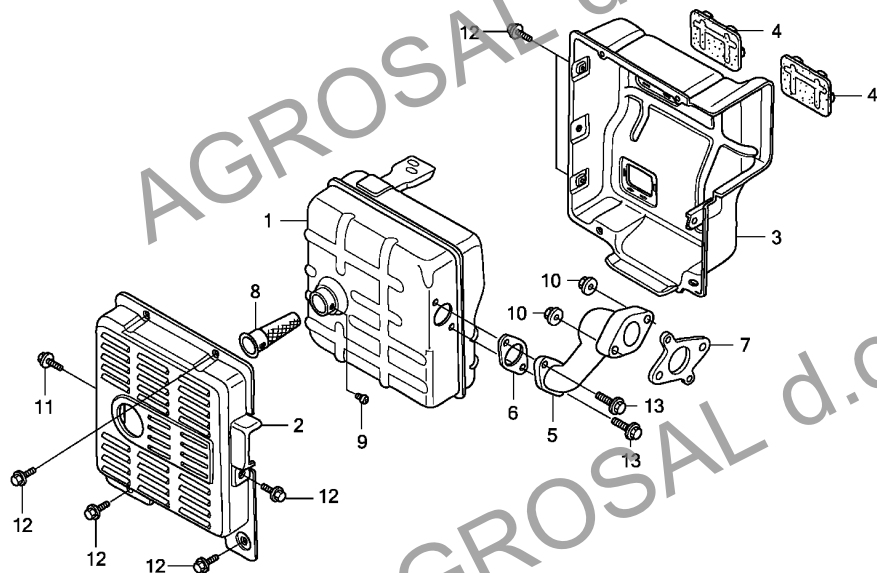
Ref. No.	Part No.	Description	Reqd. QTY	Serial No.	Parts catalogue code
			GX 340 H1		
1	15721-ZB4-000	TUBE, BREATHER	1		
2	17211-899-000	ELEMENT, AIR CLEANER	1		
3	17212-ZB4-003	SEPARATOR, AIR CLEANER	1		
4	17220-ZB4-003	CASE COMP., AIR CLEANER	1		
5	17222-ZC2-000	STAY, AIR CLEANER	1		
6	17231-899-000	COVER COMP., AIR CLEANER	1		
7	17235-899-000	CLIP A, AIR CLEANER WIRE	2		
8	17236-899-000	CLIP B, AIR CLEANER WIRE	2		
9	17252-899-000	SEAL, AIR CLEANER	1		
10	17367-413-690	FILTER, DRAIN TUBE	1		
11	94050-05000	NUT, FLANGE, 5MM	6		
12	94050-06000	NUT, FLANGE, 6MM	1		

2

E-16

MUFFLER

C14



Z7D0E1600

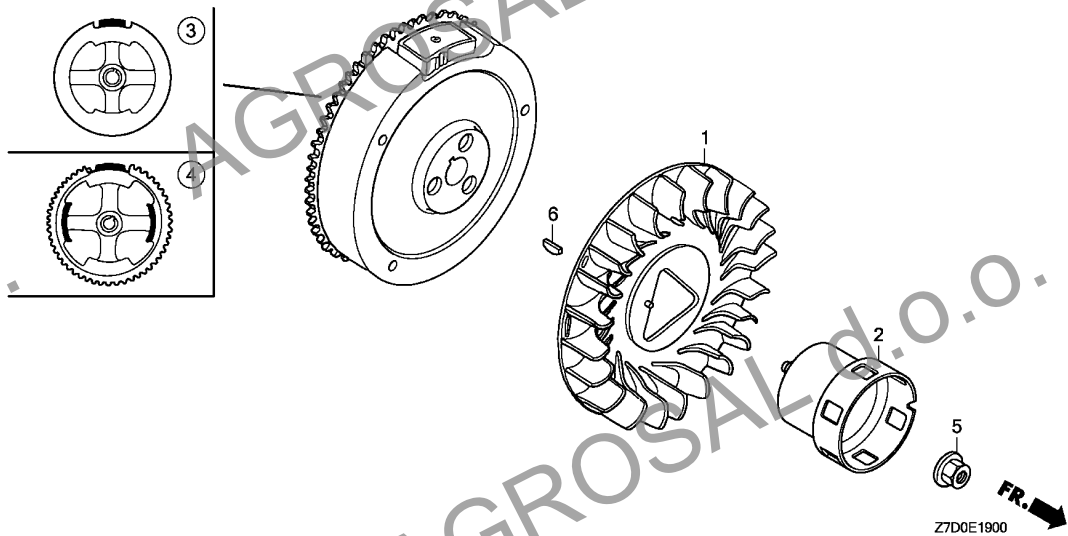
Ref. No.	L.O.N.	(Relative ref. Number) Description	F.R.T.
1	3131C5	MUFFLER, EXHAUST	0.2
2	3131D9	PROTECTOR, EXHAUST MUFFLER : OUTER	0.1
3	3131D8	PROTECTOR, EXHAUST MUFFLER : INNER	0.2
4	3131G6	SEAL, MUFFLER PROTECTOR	0.2
5	3131C9	PIPE, EXHAUST	0.2
6		(?)	
	3131B5	GASKET, EXHAUST PIPE	0.2
8	3131A1	ARRESTER, SPARK	0.2
		.INCLUDES: Spark arrester check	

Ref. No.	Part No.	Description	Reqd. QTY	Serial No.	Parts catalogue code
			GX 340 H1		
1	18310-ZD1-E32	MUFFLER COMP.	1		
2	18320-ZC2-000	PROTECTOR, MUFFLER OUTER	1		
3	18325-ZB4-000	PROTECTOR, MUFFLER INNER	1		
4	18329-ZB4-000	SEAL, MUFFLER PROTECTOR	2		
5	18330-ZE3-700	PIPE, EX.	1		
6	18333-ZB4-800	GASKET, EX. PIPE	1		
7	18333-ZF6-W01	GASKET, EX. PIPE	1		
8	18355-ZB4-630	ARRESTER, SPARK	1		
9	90002-ZE2-U91	SCREW, TAPPING, 4X8	1		
10	94050-08000	NUT, FLANGE, 8MM	2		
11	95701-06010-00	BOLT, FLANGE, 6X10	1		
12	95701-06012-00	BOLT, FLANGE, 6X12	7		
13	95701-08020-00	BOLT, FLANGE, 8X20	2		

E-19

FLYWHEEL

C15



Ref. No.	L.O.N.	(Relative ref. Number) Description	F.R.T.
1	1141G7	FAN, ENGINE COOLING	0.2
2	1121A9	PULLEY, RECOIL STARTER	0.2
3		(4)	
	2161B5	FLYWHEEL	0.3

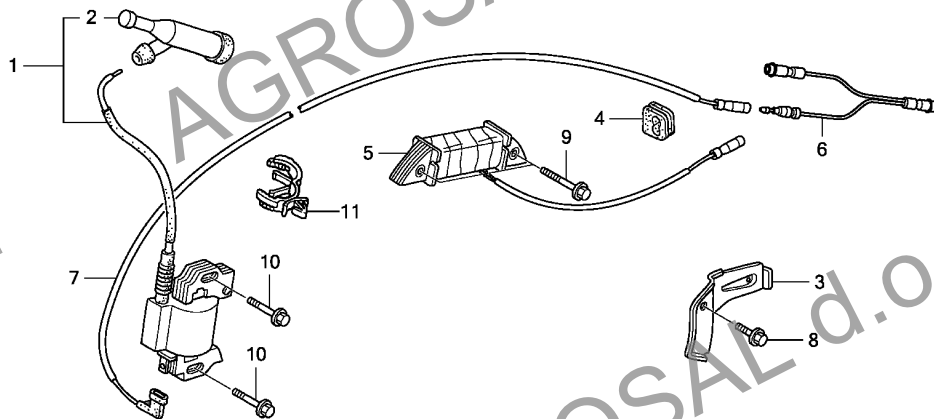
Ref. No.	Part No.	Description	Reqd. QTY	Serial No.	Parts catalogue code
			GX 340 H1		
1	19511-Z7E-000	FAN, COOLING	1		
2	28451-Z7E-000	PULLEY, STARTER	1		
3	31110-Z7E-801	FLYWHEEL COMP.	1	----- EDT1	
4	31110-Z7E-821	FLYWHEEL COMP. (SEL-LAMP)	1	----- EDS1	
5	90201-ZE3-790	NUT, SPECIAL, 16MM	1		
6	90741-ZE2-000	KEY, SPECIAL WOODRUFF, 25X18	1		

2

E-20

IGNITION COIL

C16



Z7D0E2000
FR. →

Ref. No.	L.O.N.	(Relative ref. Number) Description	F.R.T.
1	6141A5	COIL, IGNITION(ONE)	0.3
2	6141B8	TERMINAL, HIGH TENSION	0.1
5	6131C3	COIL, CHARGE	0.3
7	6111B3	CORD, STOP SWITCH	0.3

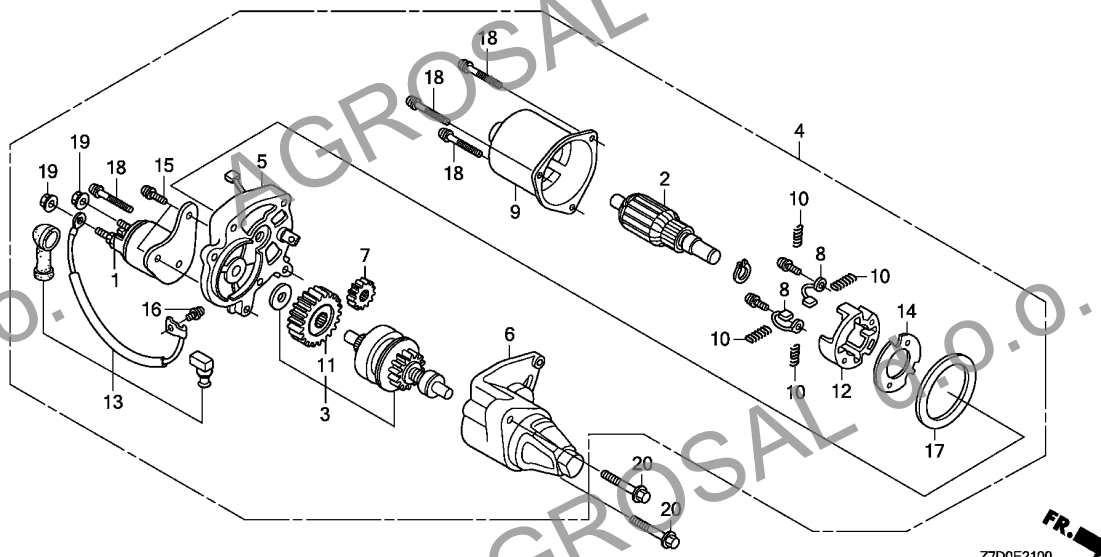
Ref. No.	Part No.	Description	Reqd. QTY	Serial No.	Parts catalogue code
			GX 340 H1		
1	30500-Z7E-003	COIL ASSY., IGNITION	1		
2	30700-Z1T-003	CAP ASSY., NOISE SUPPRESSOR	1		
3	31511-Z7E-000	CLAMPER, CORD	1	-----	EDS1
4	31512-ZE2-000	GROMMET, CORD	1	-----	EDS1
5	31630-ZE1-013	COIL ASSY., CHARGE (1A)	1	-----	EDS1
6	32197-ZH8-003	SUB HARNESS	1		
7	36101-ZE3-800	CORD, STOP SWITCH (470MM)	1		
8	90013-883-000	BOLT, FLANGE, 6X12(CT200)	1	-----	EDS1
9	90014-ZE6-000	BOLT, FLANGE, 6X35(CT200)	2	-----	EDS1
10	90015-883-000	BOLT, FLANGE, 6X28	2		
11	90684-ZA0-601	CLIP, HARNESS	1	-----	EDT1

2

E-21

STARTER MOTOR

D 1



Ref. No.	L.O.N.	(Relative ref. Number) Description	F.R.T.
1	6121E5	CONTACTOR, STARTER	0.2
2	6121A0	ARMATURE, STARTER	0.4
3	6121B0	CLUTCH, OVERRUNNING	0.4
4	6121D5	MOTOR, STARTER	0.2
5	6121C3	BRACKET, STARTER :CENTER	0.4
6	6121D2	BRACKET, STARTER :FRONT	0.3
7	6121B2	GEAR SET, STARTER PINION	0.4
8	6121A9	BRUSH, STARTER	0.4
9	6121D1	YOKE, STARTER	0.4
12	6121B6	HOLDER, STARTER BRUSH	0.4
13	6121D0	WIRE, WATER COVER	0.1

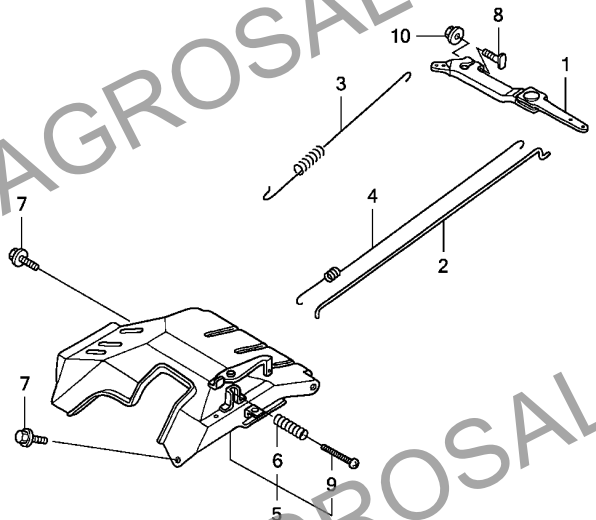
Ref. No.	Part No.	Description	Reqd. QTY	Serial No.	Parts catalogue code
			GX 340 H1		
1	31204-ZA0-003	CONTACTOR ASSY.	1	-----	EDS1
2	31206-ZE3-003	ARMATURE COMP.	1	-----	EDS1
3	31207-ZE3-003	CLUTCH*COMP., OVERRUNNING	1	-----	EDS1
4	31210-ZE3-023	MOTOR UNIT, STARTER	1	-----	EDS1
5	31211-ZE2-003	BRACKET, CENTER	1	-----	EDS1
6	31212-ZE3-003	BRACKET, FR.	1	-----	EDS1
7	31213-ZE2-003	GEAR, DRIVE PINION	1	-----	EDS1
8	31215-ZE2-003	BRUSH	2	-----	EDS1
9	31218-ZE3-003	YOKE COMP.	1	-----	EDS1
10	31219-ZE2-003	SPRING, BRUSH RETURN	4	-----	EDS1
11	31222-ZE3-791	GEAR, REDUCTION	1	-----	EDS1
12	31231-ZE2-003	HOLDER, BRUSH	1	-----	EDS1
13	31232-ZE3-003	WIRE, WATER COVER	1	-----	EDS1
14	31233-ZE2-003	INSULATOR	1	-----	EDS1
15	90007-ZE2-003	BOLT-WASHER, 5X14	2	-----	EDS1
16	90110-ZE2-003	SCREW-WASHER, 4X6	1	-----	EDS1
17	91601-ZE2-003	PACKING	1	-----	EDS1
18	93892-05032-18	SCREW-WASHER, 5X32	4	-----	EDS1
19	94070-06080	NUT-WASHER, 6MM	2	-----	EDS1
20	95701-08035-08	BOLT, FLANGE 8X35	2	-----	EDS1

2

E-22

CONTROL

D 2



Z7D0E2200

Ref. No.	L.O.N.	(Relative ref. Number) Description	F.R.T.
1	1161A0	ARM, GOVERNOR	0.2
2	1161B1	ROD, GOVERNOR	0.3
3	1161C5	SPRING, GOVERNOR	0.2
4	1161C2	SPRING, THROTTLE RETURN	0.3
5	1161A5	CONTROL, THROTTLE/GOVERNOR ...	0.2

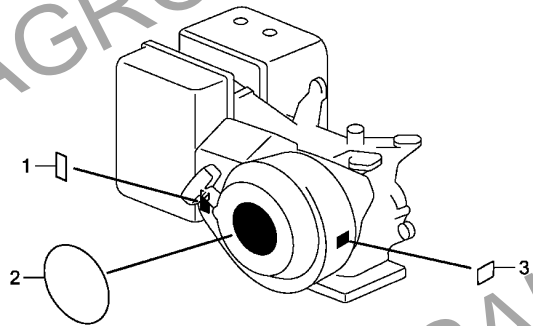
Ref. No.	Part No.	Description	Reqd. QTY	Serial No.	Parts catalogue code
			GX		
			340		
			H1		
1	16550-ZE3-700	ARM COMP., GOVERNOR	1		
2	16555-ZE3-000	ROD, GOVERNOR	1		
3	16561-ZE3-000	SPRING, GOVERNOR	1		
4	16562-ZE3-700	SPRING, THROTTLE RETURN	1		
5	16570-ZE3-700	CONTROL ASSY.	1		
6	16584-883-300	SPRING, CONTROL ADJUSTING ...	1		
7	90013-883-000	BOLT, FLANGE, 6X12(CT200) ...	2		
8	90015-ZE5-010	BOLT, GOVERNOR ARM	1		
9	93500-05035-0A	SCREW, PAN, 5X35	1		
10	94050-06000	NUT, FLANGE, 6MM	1		

2

E-28

LABEL

D 3



FR. ←

Z7D0E2800

Ref. No.	L.O.N.	(Relative ref. Number)	Description	F.R.T.
----------	--------	------------------------	-------------	--------

NO INFORMATION

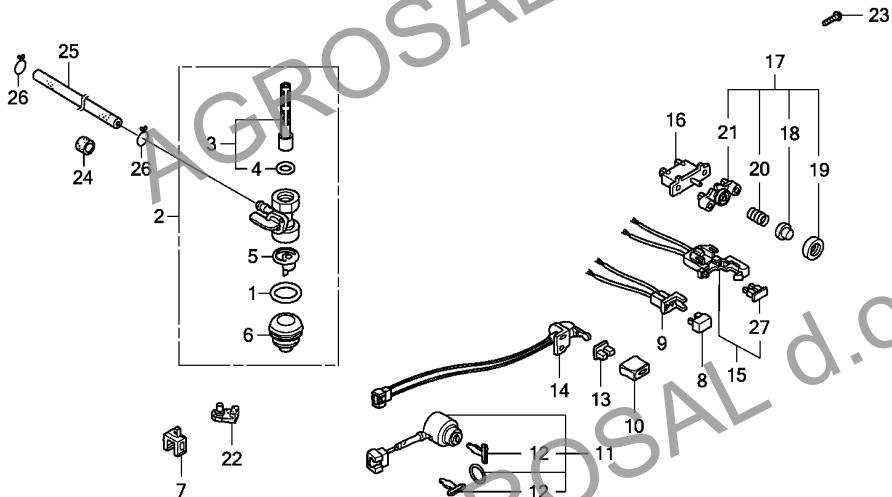
Ref. No.	Part No.	Description	Reqd. QTY	Serial No.	Parts catalogue code
			GX 340 H1		
1	87114-ZH7-000	LABEL, WARNING (NOT CERTIFIED FOR SALE)	1		
2	87521-ZE3-W04	EMBLEM (GX340)	1		
3	87594-ZB4-A00	MARK, OIL CAUTION	1		

2

E-40

OTHER PARTS(1)

D 4



Z7D0E4000

Ref. L.O.N. (Relative ref. Number) F.R.T.
No. Description

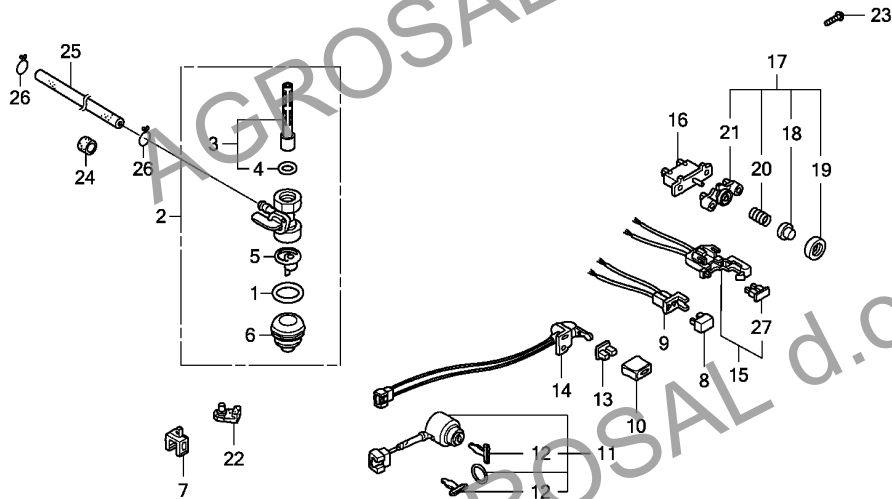
NO INFORMATION

Ref. No.	Part No.	Description	Reqd. QTY	Serial No.	Parts catalogue code
			GX 340 H1		
1	16173-001-004	PACKING, FUEL STRAINER CUP ..	1		
2	16950-ZB4-015	COCK ASSY., FUEL	1		
3	16952-ZB4-005	SCREEN SET, FUEL STRAINER ..	1		
4	16958-397-771	O-RING	1		
5	16959-471-831	FILTER, CUP	1		
6	16967-GA6-671	CUP, FUEL STRAINER	1		
7	30561-ZB4-000	CLIP, WIRE	1		
8	31700-124-008	RECTIFIER ASSY., SILICON (SHINDENGEN)	1	-----	EDS1
9	32130-ZE1-000	COUPLER COMP.	1	-----	EDS1
10	32343-892-003	KNOB, COCK LEVER	1	-----	EDT1
11	35100-ZB4-023	SWITCH ASSY., COMBINATION ...	1	-----	EDS1
12	35111-880-013	KEY COMP.	2	-----	EDS1
13	36106-892-003	BUSH, CONTROL KNOB	1	-----	EDT1
14	36110-ZB4-702	SWITCH ASSY., ENGINE KILL ...	1	-----	EDT1
15	38220-ZE1-000	CASE COMP., FUSE	1	-----	EDS1
16	38240-VA3-900	PROTECTOR, CIRCUIT (1.0A) ...	1	-----	EDS1
17	38250-898-000	LENS ASSY., PROTECTOR	1	-----	EDS1
18	38251-898-000	LENS	1	-----	EDS1
19	38252-898-000	CAP, LENS	1	-----	EDS1
20	38253-898-000	SPRING, COIL	1	-----	EDS1
21	38254-898-000	HOLDER, LENS	1	-----	EDS1
22	50319-ZB2-000	RUBBER, TANK MOUNTING	2		
23	90101-692-000	SCREW, GLOVE BOX	1		
24	90854-ZB2-000	RUBBER, FUEL (9X15X10)	1		

E-40

OTHER PARTS(1)

D 5



Z7D0E4000

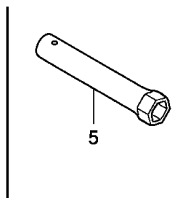
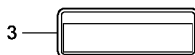
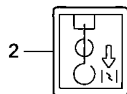
Ref. No.	Part No.	Description	Reqd. QTY		Serial No.	Parts catalogue code
			GX	H1		
25	95001-45165-40	TUBE, FUEL, 4.5X165 (95001-45001-60M)	1			
26	95002-02080	CLIP, TUBE (B8)	2			
27	98200-30500	FUSE, BLADE (5A)	1		----- EDS1	

2

E-40-1

OTHER PARTS(2)

D 6



Z7D0E4001

Ref. L.O.N. (Relative ref. Number) F.R.T.
No. Description

NO INFORMATION

Ref. No.	Part No.	Description	Reqd. QTY	Serial No.	Parts catalogue code
			GX 340 H1		

1	87522-883-660	MARK, CAUTION (ENGLISH/FRENCH/SPANISH)	1		
2	87528-898-620	MARK, CHOKE	1		
3	87533-77E-800	MARK, AIR CLEANER	1		
4	87539-898-620	MARK, EX. CAUTION (ENGLISH/FRENCH)	1		
5	89216-7B4-000	WRENCH, PLUG	1		

2

PART NO. INDEX

E 1

Part Number	Address	Page	Ref.	Part Number	Address	Page	Ref.	Part Number	Address	Page	Ref.	Part Number	Address	Page	Ref.	
11000				16000				17367-413-690	C13	27	10	31512-ZE2-000	C16	30	4	
11300-Z7E-000	C3	17	1	16010-ZE3-701	C11	25	1	18000				31630-ZE1-013	C16	30	5	
11381-ZE3-801	C3	17	2	16011-ZA0-931	C11	25	2	18310-ZD1-E32	C14	28	1	31700-124-008	D4	34	8	
				16013-Z1C-003	C11	25	3	18320-ZC2-000	C14	28	2	32000				
12000				16015-ZA0-931	C11	25	4	18325-ZB4-000	C14	28	3	89000				
12000-ZE3-416	C2	16	1	16016-ZH7-W01	C11	25	5	18329-ZB4-000	C14	28	4	32130-ZE1-000	D4	34	9	
12000-ZE3-417	C2	16	1	16024-124-760	C11	25	6	18330-ZE3-700	C14	28	5	32197-ZH8-003	C16	30	6	
12200-ZF6-406	C1	15	1	16028-ZA0-931	C11	25	7	18333-ZB4-800	C14	28	6	32343-892-003	D4	34	10	
12204-ZE2-306	C1	15	2	16100-Z7D-D11	C11	25	8	18333-ZF6-W01	C14	28	7	90000				
12205-ZE2-305	C1	15	3	16124-ZE0-005	C11	25	9	18355-ZB4-630	C14	28	8	90001-ZE8-000	C5	19	5	
12209-Z7E-003	C6	20	1	16148-141-881	C11	25	10					90002-ZE2-U91	C14	28	9	
12216-ZE2-300	C1	15	4	16166-ZE3-F10	C11	25	11	19000				90003-ZH8-801	C9	23	12	
12251-ZE3-W00	C1	15	5	16172-ZE3-W10	C11	25	12	19511-Z7E-000	C15	29	1	90007-ZE2-003	D1	31	15	
12310-ZE2-020	C1	15	6	16173-001-004	D4	34	1	19610-Z7E-800ZB	C10	24	1	90008-ZE2-003	C9	23	13	
12391-ZE2-020	C1	15	7	16211-Z7D-700	C11	25	13	19610-Z7E-800ZB	C10	24	1	90012-ZE0-010	C6	20	16	
				16221-ZE3-800	C11	25	14	19631-ZE3-W00	C10	24	2	90013-883-000	C2	16	5	
13000				16223-ZE3-800	C11	25	15						C10	24	4	
13010-Z5L-004	C5	19	1	16230-ZE3-702	C11	25	16	28000					C16	30	8	
13011-Z5L-004	C5	19	1	16260-Z7E-800	C11	25	17	28400-Z7E-003ZB	C9	23	1	36000				
13012-Z5L-004	C5	19	1	16261-ZE2-702	C11	25	18	28410-Z7E-003ZB	C9	23	2	36101-ZE3-800	C16	30	7	
13013-Z5L-004	C5	19	1	16262-ZE2-711	C11	25	19	28420-Z7E-003	C9	23	3	36106-892-003	D4	34	13	
13101-Z7D-800	C5	19	2	16263-Z7B-000	C11	25	20	28422-ZH8-801	C9	23	4	36110-ZB4-702	D4	34	14	
13102-Z7D-800	C5	19	2	16264-ZE2-701	C11	25	21	28431-ZH8-801	C9	23	5	36135-ZF6-D41	C12	26	29	
13103-Z7D-800	C5	19	2	16265-Z7E-000	C11	25	22	28433-Z2E-003	C9	23	6	90014-ZE2-000	C1	15	8	
13104-Z7D-800	C5	19	2	16268-ZE2-721	C11	25	23	28441-Z2E-003	C9	23	7	90014-ZE6-000	C16	30	9	
13111-Z7D-000	C5	19	3	16269-ZA0-800	C11	25	24	28442-Z7E-003	C9	23	8	90015-883-000	C16	30	10	
13200-Z1C-000	C5	19	4	16400-ZE2-704	C11	25	25	28443-Z2E-003	C9	23	9	90015-ZE5-010	D2	32	8	
13310-Z7D-700	C4	18	1	16510-Z7E-000	C3	17	6	28451-Z7E-000	C15	29	2	90042-ZE3-700	C1	15	9	
13351-Z7E-000	C4	18	2	16511-ZE8-000	C3	17	7	28461-Z2E-003	C9	23	10	90101-692-000	D4	34	23	
				16512-Z7E-000	C3	17	8	28462-Z2E-003	C9	23	11	90110-ZE2-003	D1	31	16	
14000				16513-ZE2-000	C3	17	9					90131-883-000	C2	16	6	
14100-ZE3-020	C6	20	2	16531-Z0A-000	C3	17	10	38000				90201-ZE3-790	C15	29	5	
14410-Z7E-000	C6	20	3	16541-Z7E-000	C2	16	3	38220-ZE1-000	D4	34	15	90206-ZE1-000	C6	20	17	
14431-ZE2-010	C6	20	4	16550-ZE3-700	D2	32	1	38240-VA3-900	D4	34	16	90431-ZE2-700	C12	26	32	
14441-Z7E-000	C6	20	5	16555-ZE3-000	D2	32	2	38250-898-000	D4	34	17	90432-ZE2-700	C12	26	33	
14451-Z7E-000	C6	20	6	16561-ZE3-000	D2	32	3	38251-898-000	D4	34	18	90433-ZE2-700	C12	26	34	
14568-ZE1-000	C6	20	7	16562-ZE3-700	D2	32	4	38252-898-000	D4	34	19	90434-ZE2-700	C12	26	35	
14711-Z7E-000	C6	20	8	16570-ZE3-700	D2	32	5	38253-898-000	D4	34	20	90441-ZE2-010	C1	15	10	
14721-Z7E-800	C6	20	9	16584-883-300	D2	32	6	38254-898-000	D4	34	21	90446-Z7E-000	C2	16	7	
14751-Z7E-000	C6	20	10	16611-ZE2-711	C12	26	26	30000				90601-Z7E-000	C12	26	36	
14771-ZE2-000	C6	20	11	16613-893-000	C12	26	27	30500-Z7E-003	C16	30	1	90601-ZE3-000	C5	19	6	
14773-ZE2-000	C6	20	12	16615-893-000	C12	26	28	30561-ZB4-000	D4	34	7	90602-Z7E-000	C12	26	37	
14775-ZE2-010	C6	20	13	16950-ZB4-015	D4	34	2	30700-Z1T-003	C16	30	2	90602-ZE1-000	C3	17	11	
14781-Z7E-000	C6	20	14	16952-ZB4-005	D4	34	3	31000				90603-Z7E-000	C12	26	38	
14791-Z7E-000	C6	20	15	16958-397-771	D4	34	4	31110-Z7E-801	C15	29	3	90650-SB9-003	C12	26	39	
				16959-471-831	D4	34	5	31110-Z7E-821	C15	29	4	90654-SA4-003	C10	24	5	
				16967-GA6-671	D4	34	6	31204-ZA0-003	D1	31	1	90684-ZA0-601	C16	30	11	
								31206-ZE3-003	D1	31	2	90701-Z7E-000	C3	17	12	
								31207-ZE3-003	D1	31	3	90741-ZE2-000	C15	29	6	
								31210-ZE3-023	D1	31	4	90854-ZB2-000	D4	34	24	
								31211-ZE2-003	D1	31	5					
								31212-ZE3-003	D1	31	6	87000				
								31213-ZE2-003	D1	31	7	91000				
15000				17000				31215-ZE2-003	D1	31	8	87114-ZH7-000	D3	33	1	
15510-ZE2-053	C2	16	2	17211-899-000	C13	27	2	31218-ZE3-003	D1	31	9	87521-ZE3-W04	D3	33	2	
15600-735-003	C3	17	4	17212-ZB4-003	C13	27	3	31219-ZE2-003	D1	31	10	87522-883-660	D6	36	1	
15600-ZG4-003	C3	17	4	17220-ZB4-003	C13	27	4	31222-ZE3-791	D1	31	11	87528-898-620	D6	36	2	
15625-ZE1-003	C3	17	5	17222-ZC2-000	C13	27	5	31231-ZE2-003	D1	31	12	87533-Z7E-800	D6	36	3	
15721-ZB4-000	C13	27	1	17231-899-000	C13	27	6	31232-ZE3-003	D1	31	13	87539-898-620	D6	36	4	
				17235-899-000	C13	27	7	31233-ZE2-003	D1	31	14	87594-ZB4-A00	D3	33	3	
				17236-899-000	C13	27	8	31511-Z7E-000	C16	30	3					
				17252-899-000	C13	27	9						92000			
													92900-08032-0E	C1	15	11

PART NO. INDEX

E 2

Part Number	Address	Page	Ref.	Part Number	Address	Page	Ref.	Part Number	Address	Page	Ref.	Part Number	Address	Page	Ref.
93000															
93500-05012-0A	C12	26	40												
93500-05035-0A	D2	32	9												
93892-05012-18	C12	26	41												
93892-05032-18	D1	31	18												
94000															
94050-05000	C13	27	11												
94050-06000	C12	26	42												
	C13	27	12												
	D2	32	10												
94050-08000	C14	28	10												
94050-10000	C2	16	11												
94070-06080	D1	31	19												
94101-06800	C3	17	14												
94103-05000	C12	26	43												
94109-12000	C2	16	12												
94251-10000	C2	16	13												
94301-12200	C1	15	12												
95000															
95001-45165-40	D5	35	25												
95002-02070	C12	26	44												
95002-02080	D5	35	26												
95005-35075-10	C12	26	45												
95005-35130-10	C12	26	46												
95701-06010-00	C14	28	11												
95701-06012-00	C2	16	14												
	C14	28	12												
95701-08020-00	C14	28	13												
95701-08035-08	D1	31	20												
95701-08040-00	C3	17	15												
95701-10080-00	C1	15	13												
96000															
96100-62020-00	C2	16	15												
	C3	17	16												
96100-62070-00	C3	17	17												
	C4	18	3												
98000															
98079-55846	C1	15	14												
98079-55855	C1	15	14												
98200-30500	D5	35	27												
99000															
99101-ZH8-0950	C12	26	47												
99101-ZH8-0980	C12	26	47												
99101-ZH8-1000	C12	26	47												
99204-ZE0-0350	C12	26	48												

3

PART NAME INDEX

F 1

Part name	Address	Page	Ref.	Part name	Address	Page	Ref.	Part name	Address	Page	Ref.
[A]											
ALERT UNIT, OIL	C2	16	4	CLIP, GOVERNOR HOLDER	C3	17	11	GROMMET, CHOKE ROD	C12	26	27
ARMATURE COMP.	D1	31	2	CLIP, HARNESS	C16	30	11	GROMMET, CORD	C16	30	4
ARM COMP., GOVERNOR	D2	32	1	CLIP, PISTON PIN, 20MM	C5	19	6	GROMMET, DRAIN HOLE	C10	24	3
ARM, VALVE ROCKER	C6	20	4	CLIP, TUBE	C12	26	44	GROMMET, FENDER	C12	26	31
ARRESTER, SPARK	C14	28	8		D5	35	26	GUIDE, CHOKE ROD	C12	26	28
[B]											
BARREL ASSY., CYLINDER	C2	16	1	CLIP, VALVE GUIDE	C1	15	4	GUIDE, EX. VALVE	C1	15	3
BEARING, RADIAL BALL, 6202 ...	C2	16	15	CLIP, WIRE	D4	34	7	GUIDE, IN. VALVE	C1	15	2
	C3	17	16	CLIP, WIRE HARNESS	C12	26	39	GUIDE, PUSH ROD	C6	20	15
BEARING, RADIAL BALL, 6207 ...	C3	17	17	CLIP, WIRE HARNESS, 6MM	C10	24	5	GUIDE, RATCHET	C9	23	6
	C4	18	3	CLUTCH COMP., OVERRUNNING	D1	31	3	[H]			
BOLT-WASHER, 5X14	D1	31	15	COCK ASSY., FUEL	D4	34	2	HEAD COMP., CYLINDER	C1	15	1
BOLT, CONNECTING ROD	C5	19	5	COIL ASSY., CHARGE	C16	30	5	HOLDER, BRUSH	D1	31	12
BOLT, DRAIN PLUG, 12X15	C2	16	6	COIL ASSY., IGNITION	C16	30	1	HOLDER, GOVERNOR WEIGHT	C3	17	8
BOLT, FLANGE, 10X80	C1	15	13	COLLAR, LEVER	C12	26	35	HOLDER, LENS	D4	34	21
BOLT, FLANGE, 6X10	C9	23	13	COLLAR, SETTING	C11	25	12	[I]			
	C14	28	11	CONTACTOR ASSY.	D1	31	1	INSULATOR	D1	31	14
BOLT, FLANGE, 6X12	C2	16	5	CONTROL ASSY.	D2	32	5	INSULATOR, CARBURETOR	C11	25	13
	C10	24	4	CORD, STOP SWITCH	C16	30	7	[J]			
	C14	28	12	COUPLER COMP.	D4	34	9	JET SET, PILOT,	C12	26	48
	C16	30	8	COVER ASSY., CRANKCASE	C3	17	1	JET, MAIN,	C12	26	47
	D2	32	7	COVER COMP., AIR CLEANER	C13	27	6	JOINT, ROD	C11	25	20
BOLT, FLANGE, 6X28	C16	30	10	COVER COMP., FAN	C10	24	1	[K]			
BOLT, FLANGE, 6X35	C16	30	9	COVER COMP., HEAD	C1	15	6	KEY COMP.	D4	34	12
BOLT, FLANGE, 8X20	C14	28	13	CRANKSHAFT COMP.	C4	18	1	KEY, SPECIAL WOODRUFF, 25X18	C15	29	6
BOLT, FLANGE, 8X35	D1	31	20	CUP, FUEL STRAINER	D4	34	6	KNOB, COCK LEVER	D4	34	10
BOLT, FLANGE, 8X40	C3	17	15	[D]				KNOB, RECOIL STARTER	C9	23	10
BOLT, GOVERNOR ARM	D2	32	8	DIAPHRAGM ASSY.	C11	25	25	[L]			
BOLT, HEAD COVER	C1	15	8	DOWEL PIN, 12X20	C1	15	12	LABEL, WARNING	D3	33	1
BOLT, PIVOT, 8MM	C6	20	16	DOWEL PIN, 8X12	C3	17	12	LENS	D4	34	18
BOLT, STUD, 8X106	C1	15	9	[E]				LENS ASSY., PROTECTOR	D4	34	17
BOLT, STUD, 8X32	C1	15	11	ELEMENT, AIR CLEANER	C13	27	2	LEVER, CHOKE	C11	25	19
BRACKET, CENTER	D1	31	5	EMBLEM	D3	33	2	LIFTER, VALVE	C6	20	5
BRACKET, FR.	D1	31	6	E-RING, 2MM	C12	26	36	[M]			
BRUSH	D1	31	8	E-RING, 4MM	C12	26	37	MARK, AIR CLEANER	D6	36	3
BUSH, ARM PIVOT	C12	26	30	E-RING, 7MM	C12	26	38	MARK, CAUTION	D6	36	1
BUSH, CONTROL KNOB	D4	34	13	[F]				MARK, CHOKE	D6	36	2
[C]											
CAMSHAFT ASSY.	C6	20	2	FAN, COOLING	C15	29	1	MARK, EX. CAUTION	D6	36	4
CAP ASSY., NOISE SUPPRESSOR ..	C16	30	2	FILTER, CUP	D4	34	5	MARK, OIL CAUTION	D3	33	3
CAP ASSY., OIL FILLER	C3	17	3	FILTER, DRAIN TUBE	C13	27	10	MOTOR UNIT, STARTER	D1	31	4
			4	FLOAT SET	C11	25	3	MUFFLER COMP.	C14	28	1
CAP, CHOKE DUST	C11	25	10	FLYWHEEL COMP.	C15	29	3	[N]			
CAP, LENS	D4	34	19	FUSE, BLADE	D5	35	27	NOZZLE, MAIN	C11	25	11
CARBURETOR ASSY.	C11	25	8	[G]				NUT-WASHER, 6MM	D1	31	19
CASE COMP., AIR CLEANER	C13	27	4	GASKET SET	C11	25	1	NUT, FLANGE, 10MM	C2	16	11
CASE COMP., FUSE	D4	34	15	GASKET, CYLINDER HEAD	C1	15	5	NUT, FLANGE, 5MM	C13	27	11
CASE COMP., RECOIL STARTER ..	D9	23	2	GASKET, EX. PIPE	C14	28	6				
CHAMBER SET, FLOAT	C11	25	4								
CLAMPER, CORD	C16	30	3	GEAR, DRIVE PINION	D1	31	7				
CLIP A, AIR CLEANER WIRE	C13	27	7	GEAR, REDUCTION	D1	31	11				
CLIP B, AIR CLEANER WIRE	C13	27	8	GOVERNOR ASSY.	C3	17	6				

PART NAME INDEX

F 2

Part name	Address	Page	Ref.	Part name	Address	Page	Ref.	Part name	Address	Page	Ref.
NUT, FLANGE, 6MM	C12	26	42	SCREW-WASHER, 4X6	D1	31	16	[W]			
	C13	27	12	SCREW-WASHER, 5X12	C12	26	41	WASHER COMP., HEAD COVER	C1	15	10
	D2	32	10	SCREW-WASHER, 5X32	D1	31	18	WASHER, 8.2X17X0.8	C2	16	7
NUT, FLANGE, 8MM	C14	28	10	SCREW SET	C11	25	7	WASHER, CHOKE LEVER	C12	26	32
NUT, PIVOT ADJUSTING	C6	20	17	SCREW SET, DRAIN	C11	25	6	WASHER, DRAIN PLUG 12MM	C2	16	12
NUT, SPECIAL, 16MM	C15	29	5	SCREW SET, PILOT	C11	25	5	WASHER, PLAIN, 5MM	C12	26	43
[O]				SCREW, GLOVE BOX	D4	34	23	WASHER, PLAIN, 6MM	C3	17	14
OIL SEAL, 35X52X8	C2	16	8	SCREW, PAN, 5X12	C12	26	40	WASHER, THRUST, 2.7X8	C12	26	34
	C3	17	13	SCREW, PAN, 5X35	D2	32	9	WEIGHT, BALANCER	C4	18	2
OIL SEAL, 8X14X5	C2	16	9	SCREW, SETTING	C9	23	12	WEIGHT, GOVERNOR	C3	17	7
O-RING	D4	34	4	SCREW, TAPPING, 4X8	C14	28	9	WIRE, WATER COVER	D1	31	13
O-RING, 14MM	C2	16	10	SCREW, THROTTLE STOP	C11	25	9	WRENCH, PLUG	D6	36	5
[P]				SEAL, AIR CLEANER	C13	27	9	[Y]			
PACKING	D1	31	17	SEAL, CHOKE LEVER	C12	26	33	YOKE COMP.	D1	31	9
PACKING, AIR CLEANER	C11	25	24	SEAL, MUFFLER PROTECTOR	C14	28	4				
PACKING, CARBURETOR	C11	25	14	SEAL, VALVE STEM	C6	20	1				
PACKING, CASE COVER	C3	17	2	SEAT, VALVE SPRING	C6	20	13				
PACKING, FUEL STRAINER CUP	D4	34	1	SEPARATOR, AIR CLEANER	C13	27	3				
PACKING, HEAD COVER	C1	15	7	SHAFT, GOVERNOR ARM	C2	16	3				
PACKING, INSULATOR	C11	25	15	SHROUD	C10	24	2				
PACKING, OIL FILLER CAP	C3	17	5	SLIDER, GOVERNOR	C3	17	10				
PIN, GOVERNOR WEIGHT	C3	17	9	SPRING, BRUSH RETURN	D1	31	10				
PIN, LOCK, 10MM	C2	16	13	SPRING, COIL	D4	34	20				
PIN, PISTON	C5	19	3	SPRING, CONTROL ADJUSTING	D2	32	6				
PIPE, EX.	C14	28	5	SPRING, FRICTION	C9	23	7				
PISTON	C5	19	2	SPRING, GOVERNOR	D2	32	3				
PIVOT, ROCKER ARM	C6	20	6	SPRING, MANUAL CHOKE	C11	25	23				
PLATE, FRICTION	C9	23	5	SPRING, RECOIL STARTER	C9	23	8				
PLUG, SPARK	C1	15	14	SPRING, RETURN	C9	23	9				
PROTECTOR, CIRCUIT	D4	34	16	SPRING, THROTTLE RETURN	D2	32	4				
PROTECTOR, MUFFLER INNER	C14	28	3	SPRING, VALVE	C6	20	10				
PROTECTOR, MUFFLER OUTER	C14	28	2	SPRING, WEIGHT RETURN	C6	20	7				
PULLEY, STARTER	C15	29	2	STARTER ASSY., RECOIL	C9	23	1				
[R]				STAY ASSY., MANUAL CHOKE	C11	25	17				
RATCHET, STARTER	C9	23	4	STAY COMP., SOLENOID	C11	25	18				
RECTIFIER ASSY., SILICON	D4	34	8	STAY, AIR CLEANER	C13	27	5				
REEL, RECOIL STARTER	C9	23	3	STOPPER, CHOKE ROD	C11	25	22				
RETAINER, EX. VALVE SPRING	C6	20	12	SUB HARNESS	C16	30	6				
RETAINER, IN. VALVE SPRING	C6	20	11	SWITCH ASSY., COMBINATION	D4	34	11				
RING SET, PISTON	C5	19	1	SWITCH ASSY., ENGINE KILL	D4	34	14				
ROD ASSY., CONNECTING	C5	19	4	SWITCH ASSY., OIL LEVEL	C2	16	2				
ROD, CHOKE	C11	25	21	[T]							
ROD, CHOKE CONTROL	C12	26	26	TUBE, 3.5X130	C12	26	46				
ROD, GOVERNOR	D2	32	2	TUBE, 3.5X75	C12	26	45				
ROD, PUSH	C6	20	3	TUBE, BREATHER	C13	27	1				
ROPE, RECOIL STARTER	C9	23	11	TUBE, FUEL, 4.5X165	D5	35	25				
ROTATOR, VALVE	C6	20	14	[V]							
RUBBER, FUEL	D4	34	24	VALVE ASSY., SOLENOID	C11	25	16				
RUBBER, TANK MOUNTING	D4	34	22	VALVE SET, FLOAT	C11	25	2				
[S]				VALVE, DASHPOT CHECK	C12	26	29				
SCREEN SET, FUEL STRAINER	D4	34	3	VALVE, EX.	C6	20	9				
				VALVE, IN.	C6	20	8				

1

FOREWORD INDEX

2

ENGINE GROUP

3

PART NUMBER INDEX

4

PART NAME INDEX

AGROSAL d.o.o.

HONDA
The Power of Dreams

September 07, 2008



PARTS CATALOGUE NEWS

Honda Motor Co., Ltd. Service Division

PARTS CATALOGUE - CORRECTED

Printed in Japan

CODE NO.	13Z7D801
PARTS CATALOGUE NEWS	GX340H1
NEWS NO.	001

(CHINA-KD)

Block No.	Ref. No.	Note	Part No.	Description	Reqd. QTY	Serial No.	Parts catalogue code
E-8	4	D	13200-Z1C-305	ROD ASSY., CONNECTING (0.25 UNDER SIZE)	GX 340 H1 (1)		

NOTE A:PART NO. CHANGE D:NEWLY PROVIDED E:PART NO. DELETION K:REQUIRED NO. CORRECTION L:APPLICATION SERIAL NO. CORRECTION
T:APPLICATION CORRECTION Z:REMARKS CHANGE

November 03, 2008



PARTS CATALOGUE NEWS

Honda Motor Co., Ltd. Service Division

PARTS CATALOGUE - CORRECTED

Printed in Japan

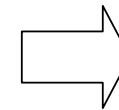
CODE NO.	13Z7D801
PARTS CATALOGUE NEWS	GX340H1
NEWS NO.	002

(CHINA-KD)

Block No.	Ref. No.	Note	Part No.	Description	Reqd. QTY	Serial No.	Parts catalogue code

ENGINE SERIAL NO. CORRECTED

Model	Type	Parts catalogue type	Applicable engine serial No.
GX340H1	EDS1	EDS1	GCAEH-1000001~
	EDT1	EDT1	



Applicable engine serial No.
GCAEH-0000001~

E-3	2	L	15510-ZE2-053	SWITCH ASSY., OIL LEVEL	1	-----	0000025
		D	35480-Z7E-003	1		0000026

NOTE A: PART NO. CHANGE D: NEWLY PROVIDED E: PART NO. DELETION K: REQUIRED NO. CORRECTION L: APPLICATION SERIAL NO. CORRECTION
T: APPLICATION CORRECTION Z: REMARKS CHANGE