

AGROSAL d.o.o.

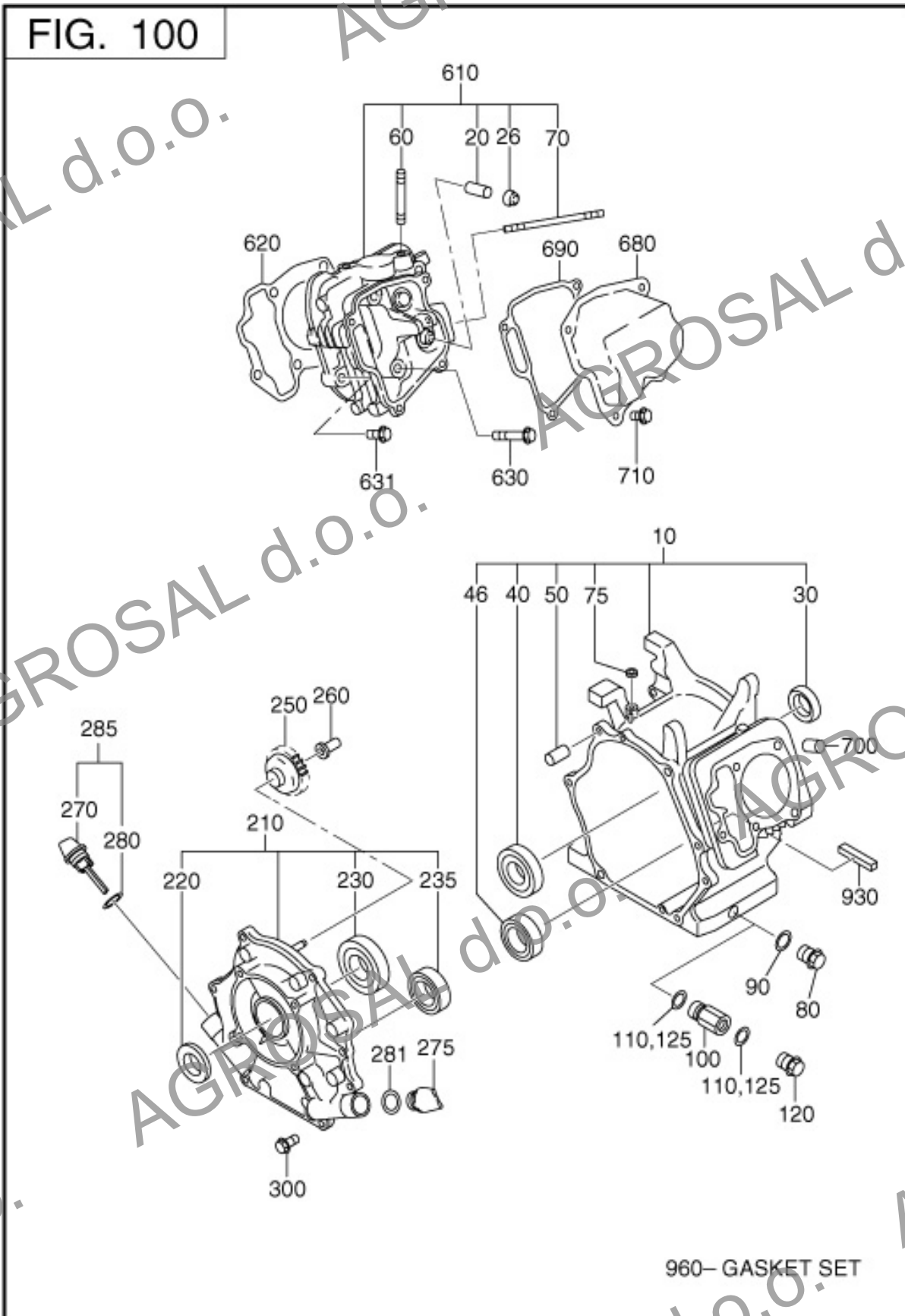
Robin
SUBARU
EX 27



AGROSAL d.o.o.

Gregorčičeva ulica 38, 5270 Ajdovščina
telefon: 05 368 90 96, fax: 05 368 90 97
e-mail: info@agrosal.si, www.agrosal.si

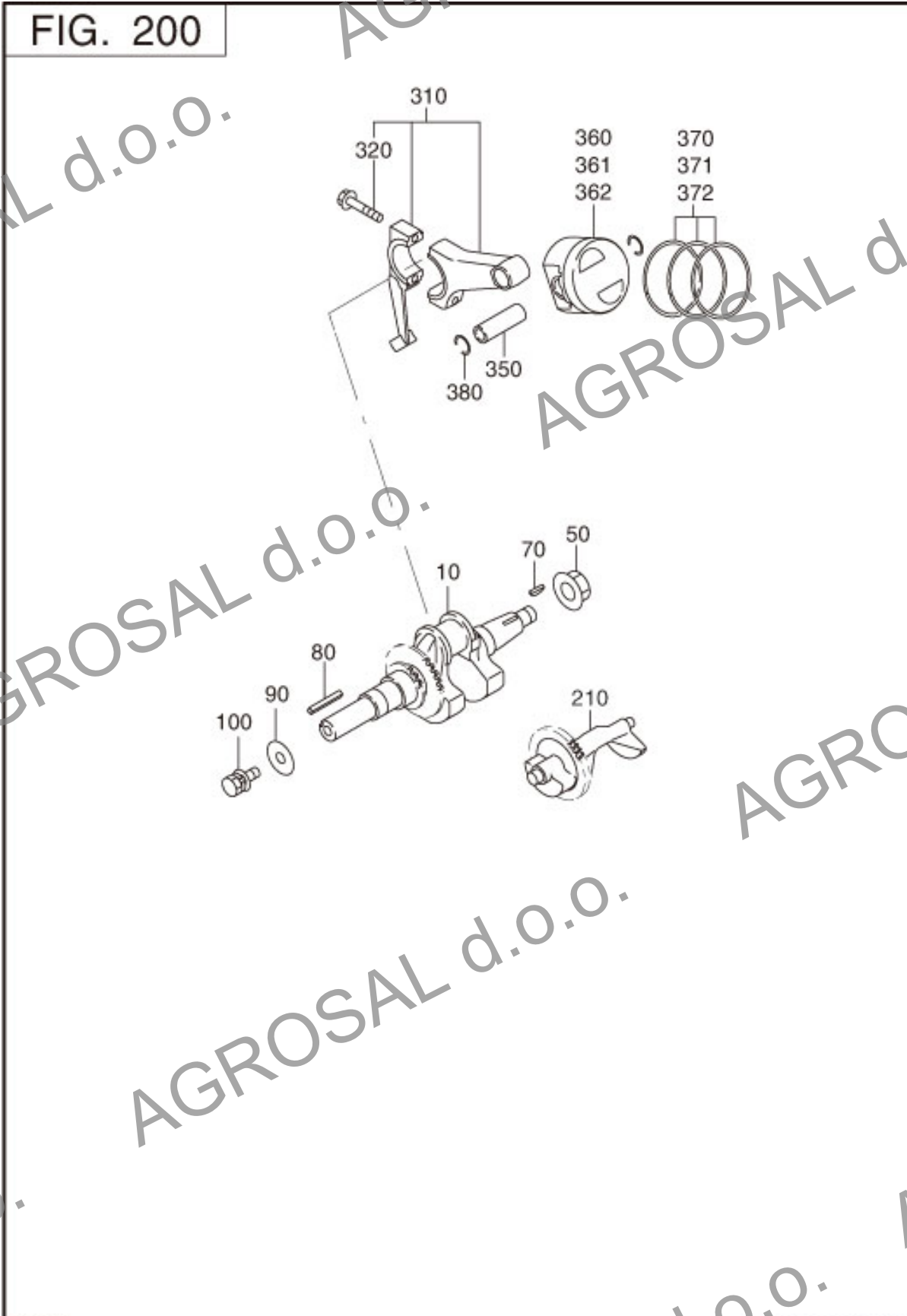
1 CRANK CASE



REF.	PART NUMBER	PART NAME	CODE NO.	QTY	REMARKS	INTERCHANGE
10	279-10101-21	CRANK CASE CP	-	1		279-10101-31
20	237-14202-03	VALVE GUIDE	-	2	5. 5DX9. 5DX27L	
26	277-16010-01	STEM SEAL	-	1	5. 5DX9. 5DX15DX7. 8B	
30	044-03001-60	OIL SEAL	-	1	30DX45DX7B	
40	060-03003-40	BALL BEARING	-	1	6206 30DX62DX16B	060-03003-41
50	277-15011-03	PIPE KNOCK	-	2	10. 3DX8. 5DX14L	
60	010-50802-50	STUD	-	2	M8X1. 25X25L	
70	010-50604-10	STUD	-	2	M6X1. 0X107L	
75	044-00600-20	OIL SEAL	-	1	6DX10DX2. 5B	
80	040-11400-30	PLUG	-	2	M14X1. 5X20DX12L	
90	021-11400-20	GASKET	-	2	14. 1DX19DX2. 3T	
210	279-11001-11	MAIN BEARING COVER C	-	1	FLANGE 4-M8X1. 25	279-11001-21
220	044-03001-60	OIL SEAL	-	1	30DX45DX7B	
230	060-03000-20	BALL BEARING	-	1	6206 30DX62DX16B	
250	277-45004-21	GOVERNOR GEAR CP	-	1	53DX28. 8T N=33	277-45004-H1
260	263-41901-03	GOVERNOR SLEEVE	-	1	6DX7. 6DX16DX26L	277-41902-01
270	279-63601-03	OIL GAUGE	-	1	M22X1. 5 L=67. 5+18	279-63601-23
275	279-65001-03	FILLER PLUG	-	1	M22X1. 5 L=12+18	
280	021-32000-50	GASKET	-	1	20DX27DX1. 5T RUBBER	
281	021-32000-50	GASKET	-	1	20DX27DX1. 5T RUBBER	
300	001-04083-50	FLANGE BOLT	-	7		
610	279-13001-01	CYLINDER HEAD CP	-	1		
620	279-15001-13	GASKET (HEAD)	-	1	T=0. 2	279-15001-23
630	011-00802-40	FLANGE BOLT	-	4	M8X1. 25X16DX68L	
631	001-04083-50	FLANGE BOLT	-	1		
680	277-15501-01	ROCKER COVER CP	-	1		277-15503-01
690	277-16001-03	GASKET (ROCKER COVER)	-	1	T=0. 7	277-16001-13
700	277-15011-03	PIPE KNOCK	-	2	10. 3DX8. 5DX14L	
710	011-00600-20	FLANGE BOLT	-	4	M6X1. 0X14DX12L	

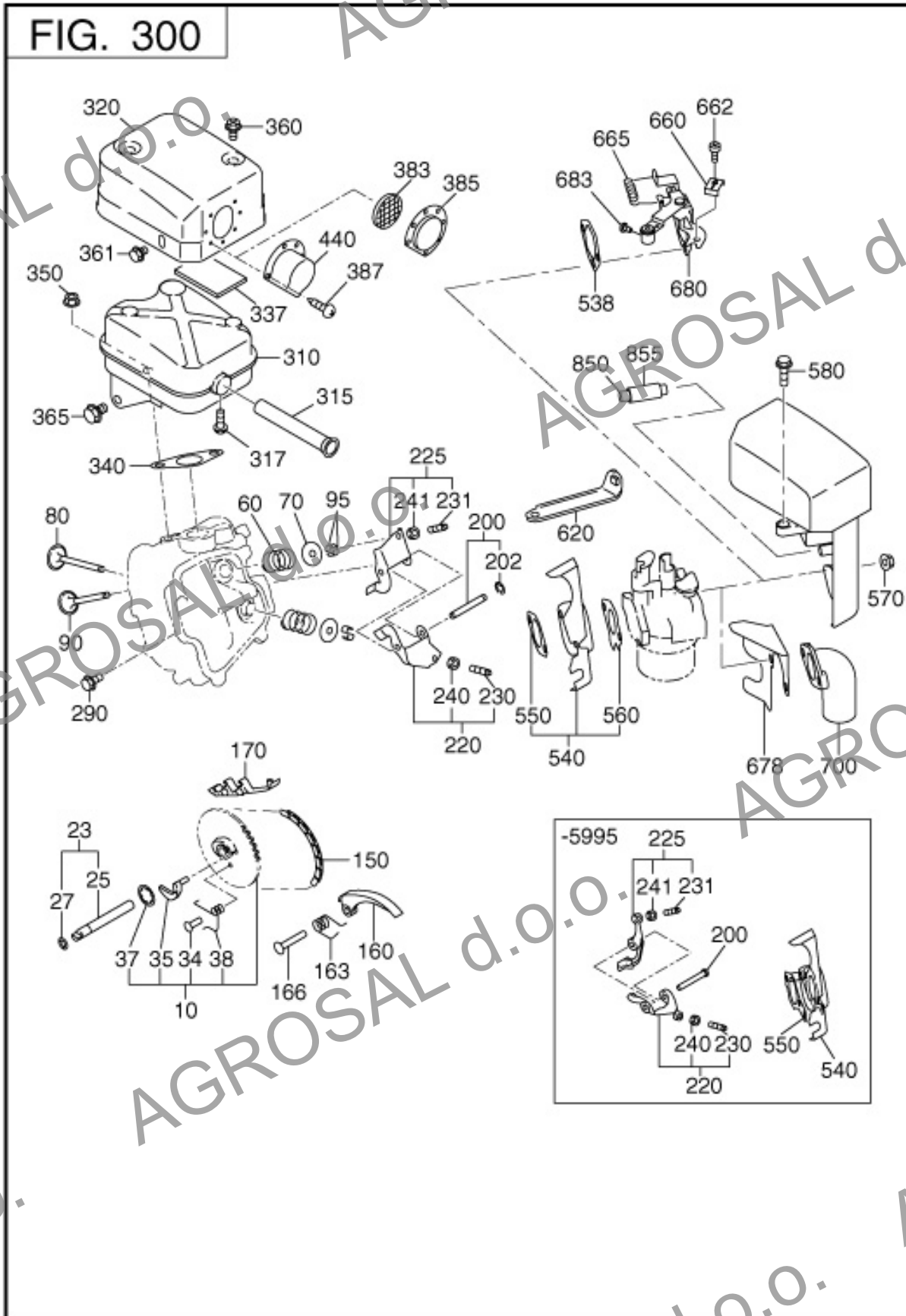
REF.	PART NUMBER	PART NAME	CODE NO.	QTY	REMARKS	INTERCHANGE
960	279-99001-07	GASKET SET	-	1		279-99001-17

2 CRANKSHAFT,PISTON



REF.	PART NUMBER	PART NAME	CODE NO.	QTY	REMARKS	INTERCHANGE
10	279-20201-31	CRANKSHAFT CP	5600-	1		279-20201-41
	279-20201-21	CRANKSHAFT CP	-5599	1	L=299 PTO=25DX60L M8	279-20201-31
50	018-01800-10	FLANGE NUT	-	1	M18X15X31DX14H	
70	032-30300-10	WOODRUFF KEY	-	1	3BX6HX16D	
80	005-30073-51	KEY	-	1		
90	020-00800-20	WASHER	-	1	8.5DX35DX4.5T	
100	001-13082-00	BOLT & WASHER AY	-	1		
310	279-22501-20	CONNECTING ROD AY	-	1	104.5CDX26B 35D&18D	279-22501-30
320	279-23001-03	CONNECTING ROD BOLT	-	2	M7X1.0X14DX40L	
350	279-23301-03	PISTON PIN	-	1	18DX13DX53L	279-23301-13
360	279-23401-03	PISTON	-	1	STD. (75DX43H)	279-23401-H3
361	279-23403-03	PISTON	-	1	0.25 O.S. (75DX43H)	279-23403-H3
362	279-23404-03	PISTON	-	1	0.50 O.S. (75DX43H)	279-23404-H3
370	279-23511-07	PISTON RING SET	-	1	STD. OIL:EXPANDER	279-23511-17
371	279-23512-07	PISTON RING SET	-	1	0.25 O.S. OIL:EXPAND	279-23512-17
372	279-23513-07	PISTON RING SET	-	1	0.50 O.S. OIL:EXPAND	279-23513-17
380	056-51800-10	CLIP	-	2	17.3DX1.6D	

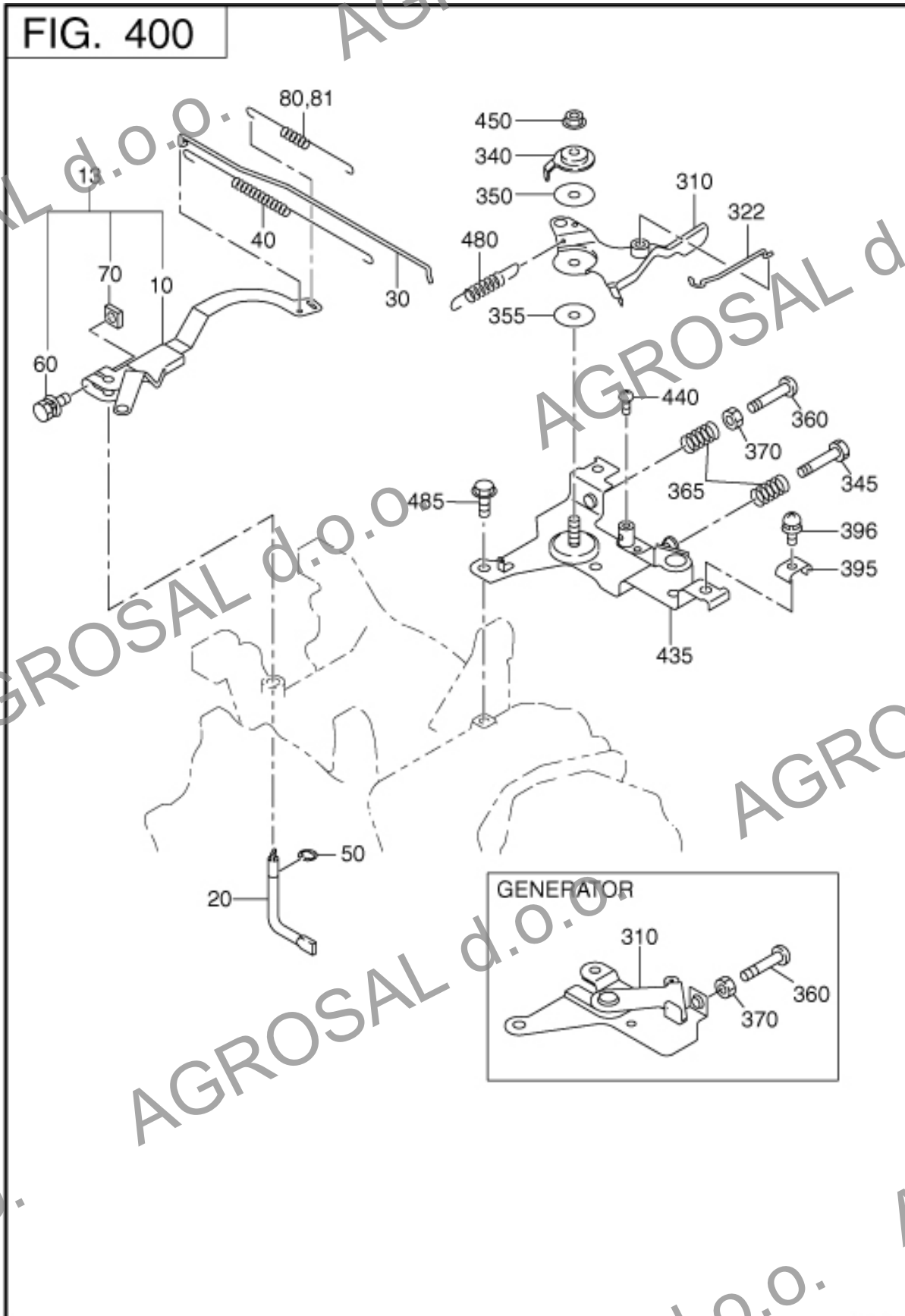
3 INTAKE EXHAUST



REF.	PART NUMBER	PART NAME	CODE NO.	QTY	REMARKS	INTERCHANGE
10	279-31601-01	CAM SHAFT CP	-	1	93DX2. 9B N=44	279-31601-11
25	277-35101-03	PIN(CAM SHAFT)	-	1	9DX78. 5L	277-35101-01
27	024-00600-10	O RING	-	1	5. 8DX9. 6D	024-00600-30
34	277-38601-03	PIN(SPRING)	-	1	4DX8DX9L	
35	279-36401-03	RELEASE LEVER	-	1		
37	277-36501-03	CLIP	-	1	13. 8DX20. 3DX0. 4T	
38	277-38701-03	RETURN SPRING	-	1	5. 3DX0. 6DX6L N=6	
60	279-33601-03	VALVE SPRING	-	2	19. 2DX2. 3DX27L N=6	
70	269-33701-03	SPRING RETAINER	-	2	8. 6DX26DX9. 3T	
80	279-33401-13	INTAKE VALVE	-	1	28. 5DX5. 5DX67. 8L	279-33401-H3
90	279-33501-13	EXHAUST VALVE	-	1	26. 5DX5. 5DX67. 8L	279-33501-H3
95	132-10KA0-31	COLLET-VALVE	-	4		
150	279-35601-01	TIMING CHAIN CP	-	1	100 LINK	279-35601-11
160	277-36911-03	TENTIONER	-	1		20A-36911-03
163	277-37101-03	SPRING(TENTIONER)	-	1	10DX1. 8DX12L N=5	
166	277-36902-03	PIN(TENTIONER)	-	1	6DX13DX34L	
170	277-36913-13	CHAIN GUIDE	-	1		20A-36913-03
200	277-35001-03	PIN(ROCKER)	-	1	6DX9DX41L	277-35001-13
220	277-36101-00	ROCKER ARM(IN) AY	-	1		
225	277-36102-00	ROCKER ARM(EX) AY	-	1		
230	014-90500-10	ADJUST SCREW	-	1	M5X0. 5X20L	014-90500-20
231	014-90500-10	ADJUST SCREW	-	1	M5X0. 5X23L	014-90500-20
240	017-00500-20	NUT	-	1	M5X0. 5X4. 1H	
241	017-00500-20	NUT	-	1	M5X0. 5X4. 1H	
290	011-00600-20	FLANGE BOLT	-	1	M6X1. 0X14DX12L	
310	279-30101-21	MUFFLER CP	-	1		279-30101-31
320	279-34201-11	MUFFLER COVER CP	-	1		279-34201-21
340	277-35201-03	GASKET(MUFFLER)	-	1	T=0. 2 26D 9DX58P	277-35201-13
350	980-20082-80	FLANGE NUT	-	2		002-38080-00
360	015-20600-90	TAPPING BOLT	-	2	M6X13DX10L	

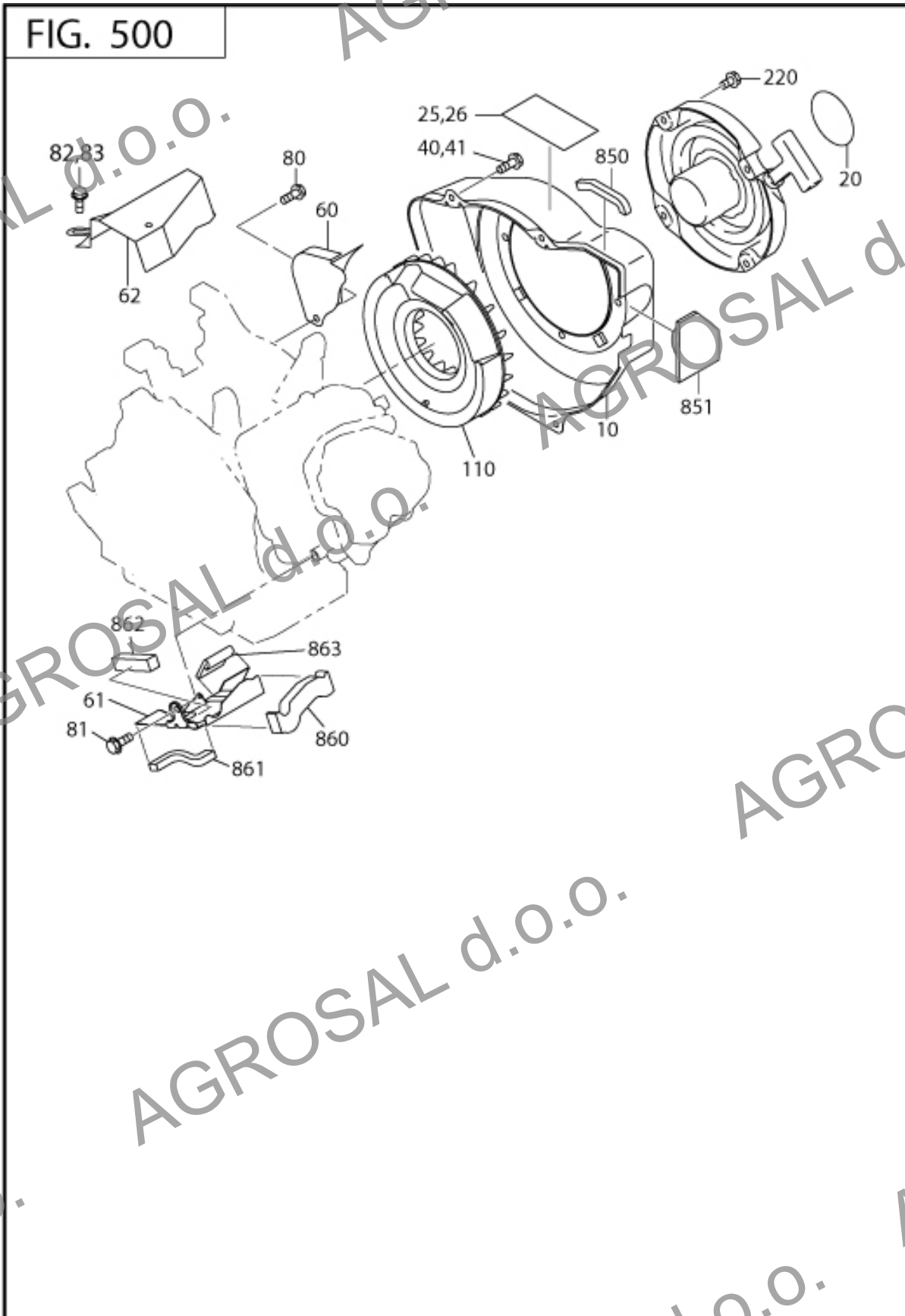
REF.	PART NUMBER	PART NAME	CODE NO.	QTY	REMARKS	INTERCHANGE
361	011-00600-10	FLANGE BOLT	-	1	M6X1. 0X14DX8L	
365	011-00801-50	FLANGE BOLT	-	1	M8X1. 25X16DX12L	
510	279-32611-00	AIR CLEANER AY	-	1		279-32611-10
-200	279-32630-08	CASE	-	1		279-32630-18
-220	279-32650-08	GASKET	-	1		279-32650-18
-250	279-32640-08	COVER	-	1		
-260	279-32730-08	LABEL	-	1		
520	279-32603-08	ELEMENT	-	1		
540	279-32901-13	INSULATOR	-	1		279-32902-J1
550	279-35901-23	GASKET(INSULATOR)	-	1		
570	002-38060-00	FLANGE NUT	-	2		
580	011-00600-50	FLANGE BOLT	-	1	M6X1. 0X13DX20L	001-04062-00
850	085-10800-00	RUBBER PIPE	-	1	8DX11D	

4 GOVERNOR OPERATION



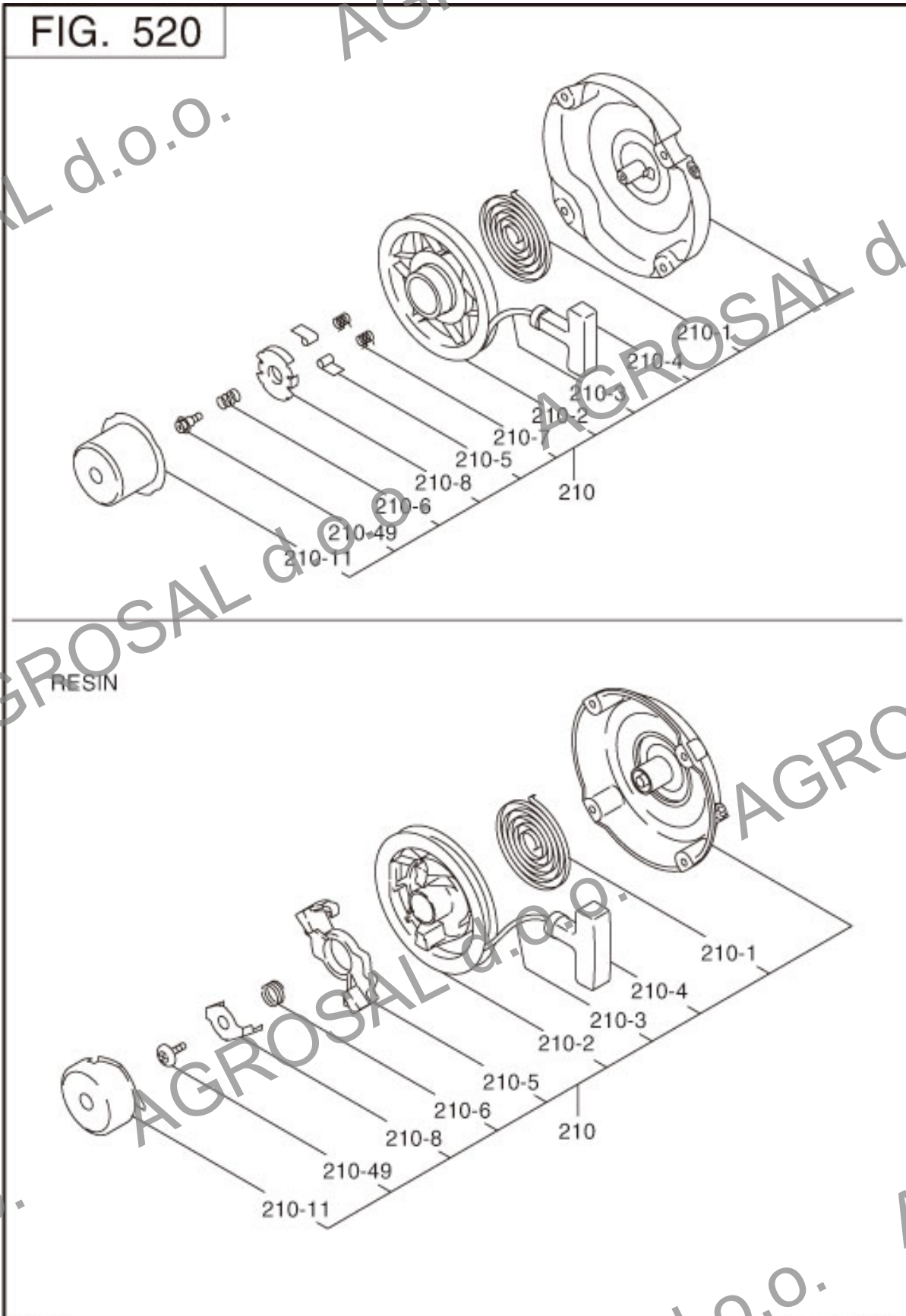
REF.	PART NUMBER	PART NAME	CODE NO.	QTY	REMARKS	INTERCHANGE
10	279-42301-13	GOVERNOR LEVER	-	1		279-42301-23
20	277-42201-33	GOVERNOR SHAFT	5600-	1		
	277-42201-23	GOVERNOR SHAFT	5539-5599	1		277-42201-33
	277-42201-13	GOVERNOR SHAFT	-5538	1		277-42201-23
30	279-42701-01	GOVERNOR ROD CP	-	1		279-42701-11
40	277-42801-13	ROD SPRING	-	1	7DX0. 5DX182L N=16	277-42801-23
50	003-13050-00	CLIP	-	1		
60	013-00602-40	BOLT AND WASHER AY	-	1	M6X1. 0X25L W/TWO W	
70	018-60600-20	NUT	-	1	M6X1. 0X4. 9H. SQUARE	
80	279-42502-23	GOVERNOR SPRING	-	1	7. 5DX0. 7DX113L N=20	279-42502-33
310	279-43301-13	SPEED CONTROL LEVER	-	1		
340	277-43501-03	STOP PLATE	-	1		277-43502-03
350	020-00601-70	WASHER	-	1	6DX24DX0. 4T	
355	021-70600-70	FRICTION WASHER	-	1	6. 5DX24DX0. 8T NYLON	
360	014-00601-80	SCREW	-	1	M6X1. 0X35L	
365	237-45004-23	SPRING (ADJUST)	-	1	6. 9DX0. 9DX20L N=7	
370	002-17060-00	NUT	-	1		
435	277-46001-01	SPEED CONT.BRKT CP	-	1		
450	002-35060-00	SELF LOCK NUT	-	1		
485	011-00600-20	FLANGE BOLT	-	2	M6X1. 0X14DX12L	

5 COOLING STARTING



REF.	PART NUMBER	PART NAME	CODE NO.	QTY	REMARKS	INTERCHANGE
10	279-51201-01	BLOWER HOUSING CP	-	1	NEW R YELLOW	279-51201-11
20	073-20051-40	LABEL(TRADE MARK)	-	1	64D	073-20054-70
40	011-00600-30	FLANGE BOLT	-	4	M6X1. 0X14DX14L	
60	279-52711-11	BAFFLE 1(CASE) CP	-	1		
61	279-52702-13	BAFFLE 2(HEAD)	5661-	1		
	279-52702-03	BAFFLE 2(HEAD)	-5660	1		279-52702-13
80	001-65081-20	BOLT	-	1		
81	011-00600-20	FLANGE BOLT	-	1	M6X1. 0X14DX12L	
220	011-00600-10	FLANGE BOLT	-	4	M6X1. 0X14DX8L	

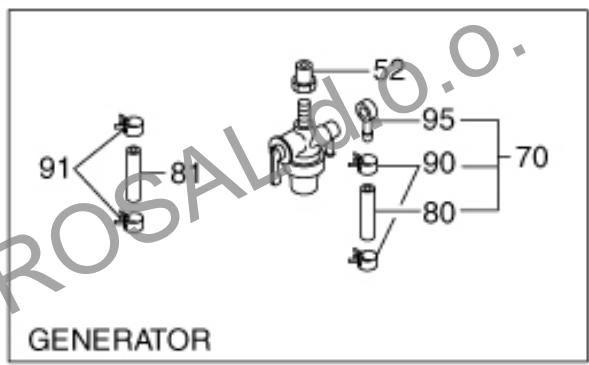
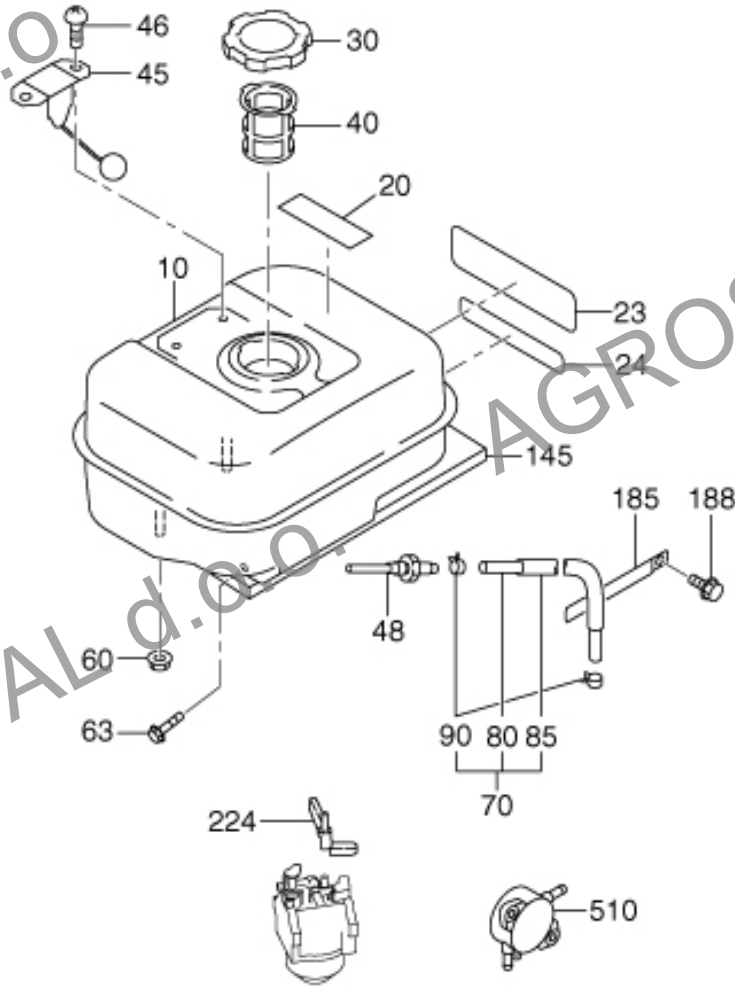
5 RECOIL STARTER



REF.	PART NUMBER	PART NAME	CODE NO.	QTY	REMARKS	INTERCHANGE
210	279-50202-00	RECOIL STARTER AY	-	1	170DP	279-50202-10
- 1	226-50716-08	SPIRAL SPRING	-	1		
- 2	279-50120-08	REEL	-	1		
- 3	279-50110-08	STARTER ROPE	-	1		
- 4	226-50701-08	STARTER KNOB	-	1		226-50701-18
- 5	279-50125-08	RACHET	-	2		
- 6	226-50731-08	FRICTION SPRING	-	1		
- 7	226-50752-08	RATCHET SPRING	-	2		
- 8	226-50741-08	FRICTION PLATE	-	1		
- 11	279-50145-08	STARTER PULLEY	-	1		
- 49	226-50753-18	CENTER SCREW	-	1		

6 FUEL LUBRICANT

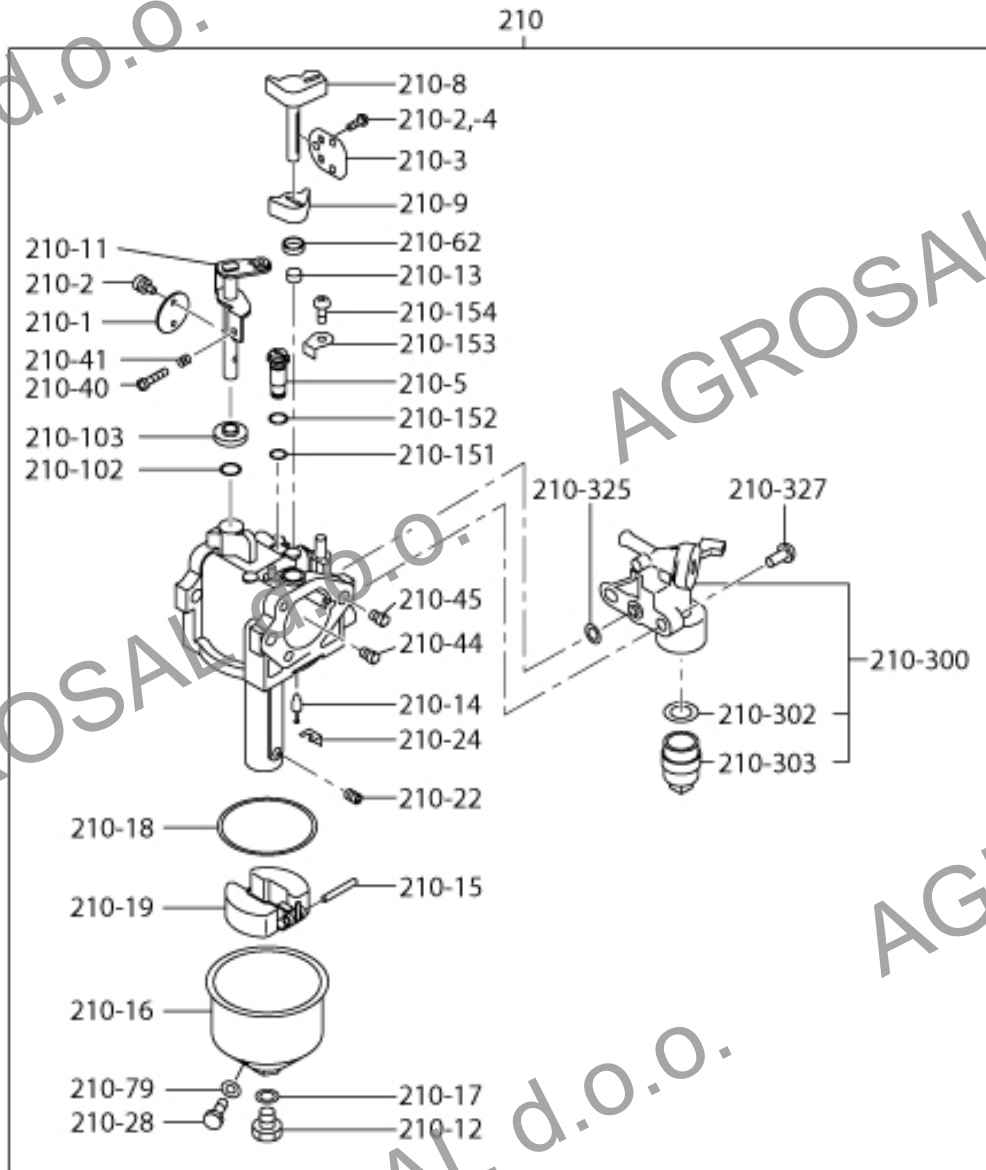
FIG. 600



REF.	PART NUMBER	PART NAME	CODE NO.	QTY	REMARKS	INTERCHANGE
10	279-60101-11	FUEL TANK CP	-	1	6. 1L NEW R YELLOW	279-60101-21
20	073-20049-80	LABEL(WARNING)	-	1	38X80 JAPAN	
23	279-95101-03	LABEL(MODEL)	-	1	32X125	279-95111-03
30	043-04400-50	FUEL TANK CAP CP	-	1	43DX68DX14H BLACK	
40	064-13600-10	FUEL FILTER	-	1	36DX46DX43H	X64-13600-10
48	050-51200-20	UNION	-	1	M12X4DX78L W/FILTER	X50-51200-20
60	002-38080-00	FLANGE NUT	-	2		
63	011-00802-50	FLANGE BOLT	-	2	M8X1. 25X25L	
80	085-10600-00	RUBBER PIPE	-	1	6DX120	
90	056-11000-30	HOSE CLAMP	-	2	10DX8BX1T	
224	277-43801-01	CHOKE LEVER CP	-	1		

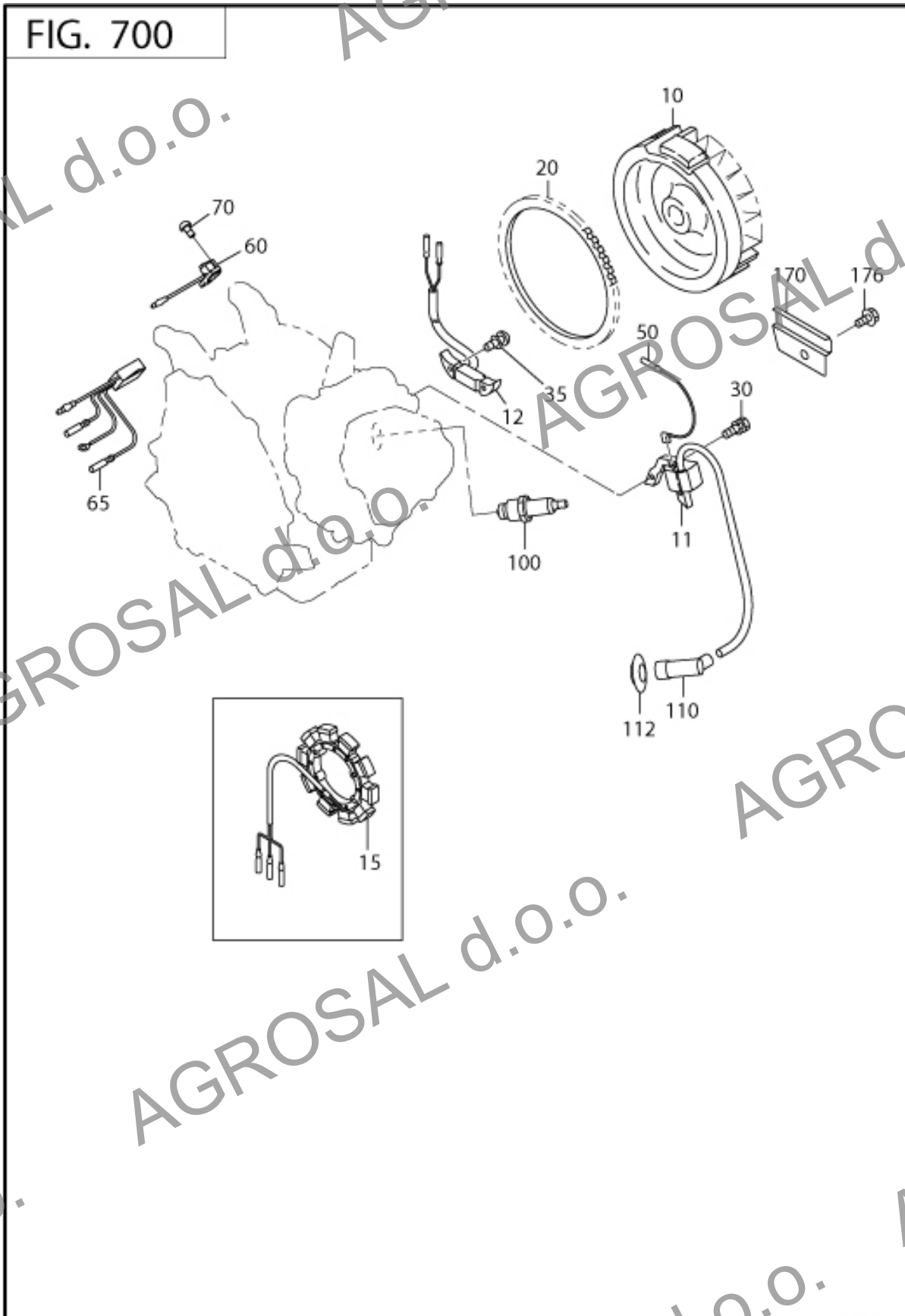
6 CARBURETOR

FIG. 640



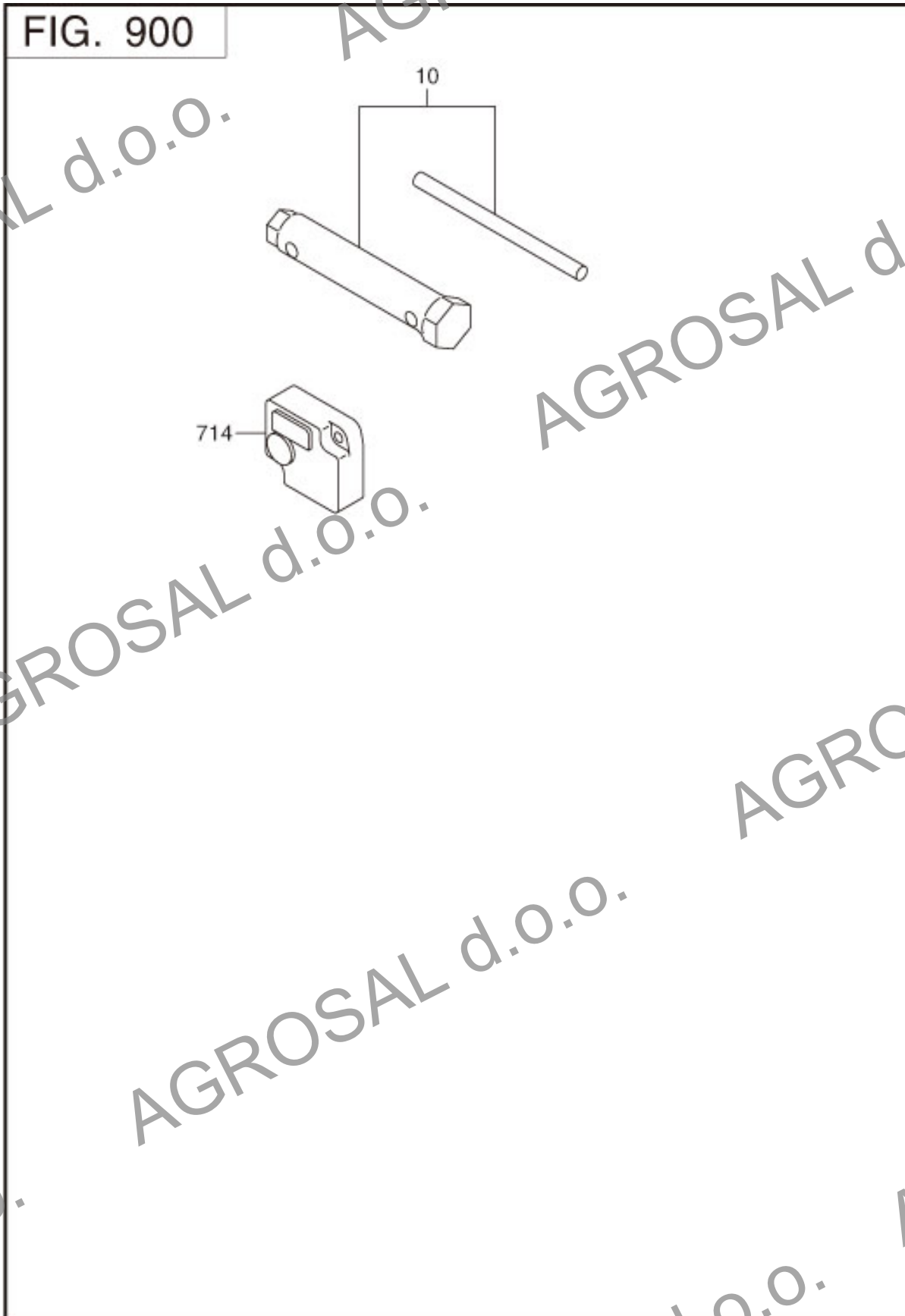
REF.	PART NUMBER	PART NAME	CODE NO.	QTY	REMARKS	INTERCHANGE
210	279-62301-10	CARBURETOR AY	5631-	1		279-62301-20
	279-62301-00	CARBURETOR AY	-5630	1		279-62301-10
- 1	279-62535-08	VALVE THROTTLE	-	1		
- 2	251-62450-08	SCREW	-	2		
- 3	279-62525-08	VALVE CHOKE	-	1		
- 5	279-62420-08	JET SLOW	-	1		
- 8	279-62520-08	SHAFT CHOKE	-	1		
- 11	279-62530-08	SHAFT SUB ASSY(TH)	-	1		
- 12	251-62453-08	SCREW	-	1		
- 14	279-62500-08	VALVE ASSY NEEDLE	-	1		
- 15	279-62515-08	PIN FLOAT LEVER	-	1		
- 16	279-62550-08	CHAMBER FLOAT	-	1		
- 17	251-62350-08	GASKET	-	1		
- 18	279-62540-08	GASKET CHAMBER	-	1		
- 19	279-62505-08	FLOAT SUB ASSY	-	1		
- 22	279-62400-08	JET MAIN	-	1		
- 28	279-62355-08	SCREW DRAIN	-	1		
- 32	279-62561-08	BUSH	-	1		
- 40	279-62353-08	SCREW ADJUSTING	-	1		
- 41	279-62445-08	SPRING	-	1		
- 60	279-62562-08	COLLAR	-	1		
-104	279-62552-08	GASKET	-	1		
-151	279-62452-08	O-RING	-	1		
-152	279-62451-08	O-RING	-	1		
-302	064-20064-10	PACKING	-	1		
-303	064-20078-10	CUP	-	1		

7 ELECTRIC DEVICE



REF.	PART NUMBER	PART NAME	CODE NO.	QTY	REMARKS	INTERCHANGE
10	279-79230-01	FLYWHEEL CP	-	1		279-79230-11
11	279-79430-01	IGNITION COIL CP	-	1		
30	001-14062-50	BOLT AND WASHER AY	-	2		
50	277-73101-01	WIRE 1 CP	-	1	L=360 BLACK CB104TER	277-73101-H1
60	X66-00004-20	SWITCH AY	-	1		066-00004-91
70	015-00400-90	TAPPING SCREW	-	2	M4X10L	
100	065-01401-50	SPARK PLUG BR6HS	-	1	NGK BR6HS	
110	065-50002-70	SPARK PLUG CAP	-	1		X65-50002-70

9 ACCESSORIES LABEL



REF.	PART NUMBER	PART NAME	CODE NO.	QTY	REMARKS	INTERCHANGE
10	277-90301-H0	ACCESSORY TOOL KIT	-	1		277-90301-J0